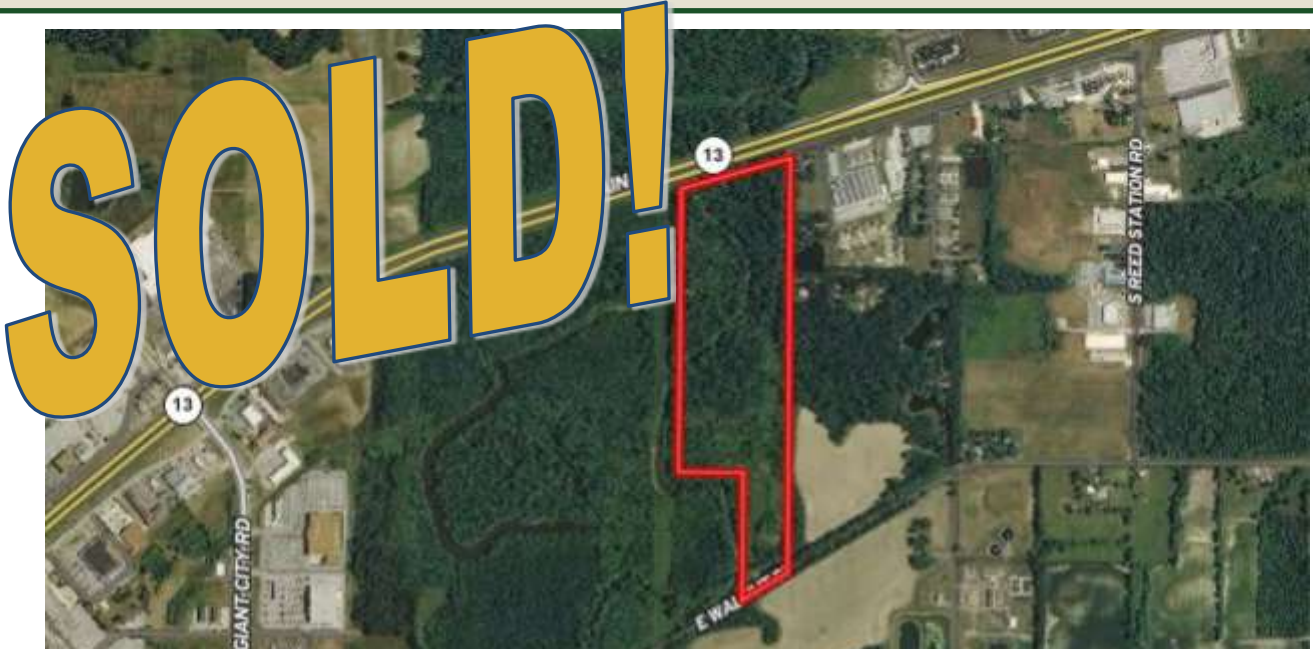


SOLD \$156,000 / CLOSED 3/26/21

FOR SALE: 52+- Acres Jackson County IL Wooded with Commercial Potential



Mark Kennedy
Managing Broker
Cell: 618-924-1747
markkennedy@buyafarm.com
Murphysboro Branch Office



buyafarm.com

PROPERTY DETAILS (2618L)

Address: Route 13 East, Carbondale IL 62901

List Price: \$156,000

1/8 mile frontage on Route 13 East of Carbondale IL. Also fronts Old State Route 13 on the South. Access from Sweets Drive.

- Parcel #15-14-400-005
- Taxes: \$197.22
- Section 14, T9E-R1E
- Development potential

Specializing in Rural Real Estate Sales and Auctions
MAIN OFFICE: 1403 Hillcrest Drive, Sparta IL 62286 / 800-443-1998