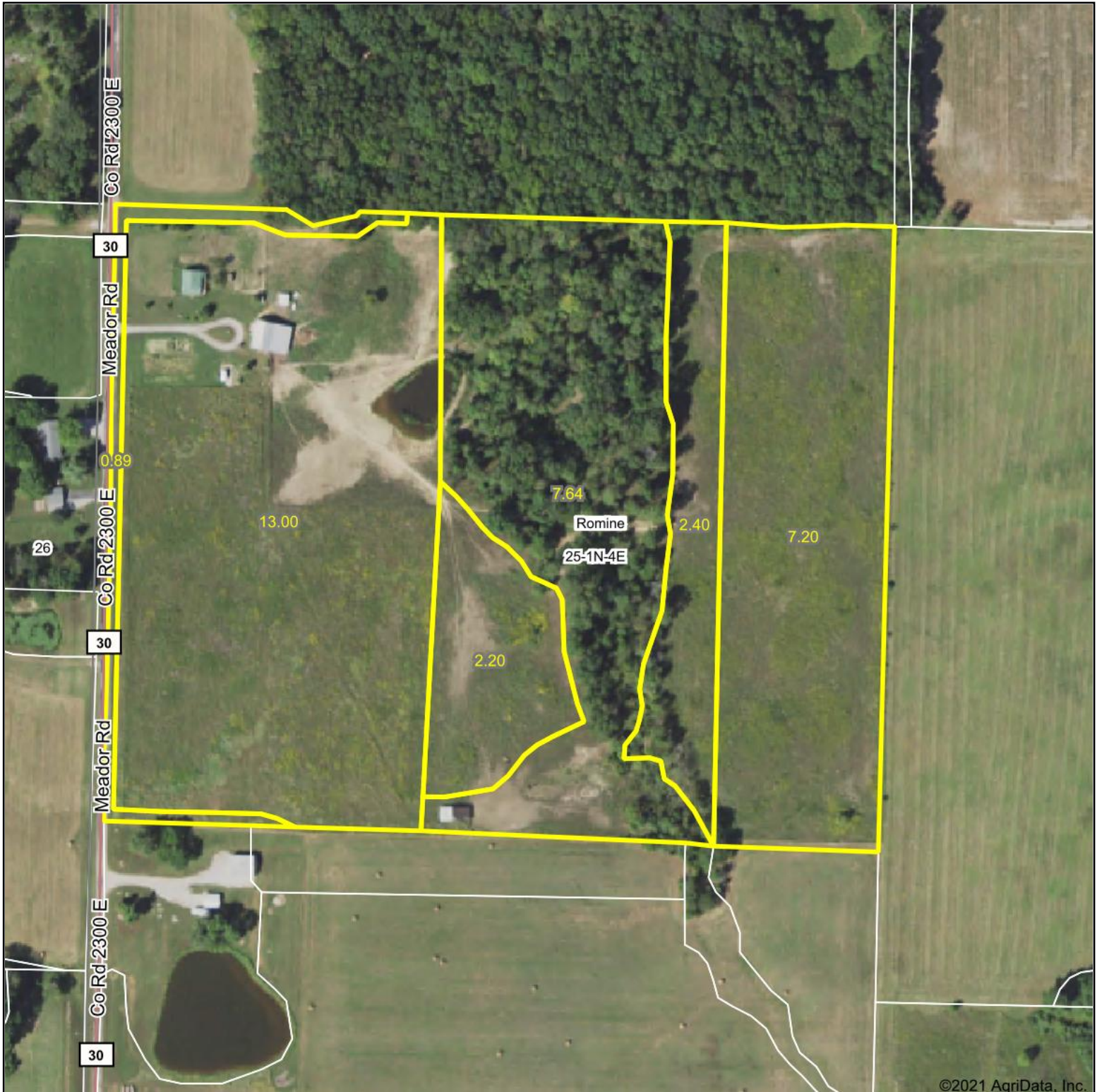


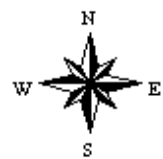
Aerial Map



Map Center: 38° 29' 56.22, -88° 42' 54.13

0ft 271ft 541ft

25-1N-4E
Marion County
Illinois



3/8/2021



Maps Provided By:

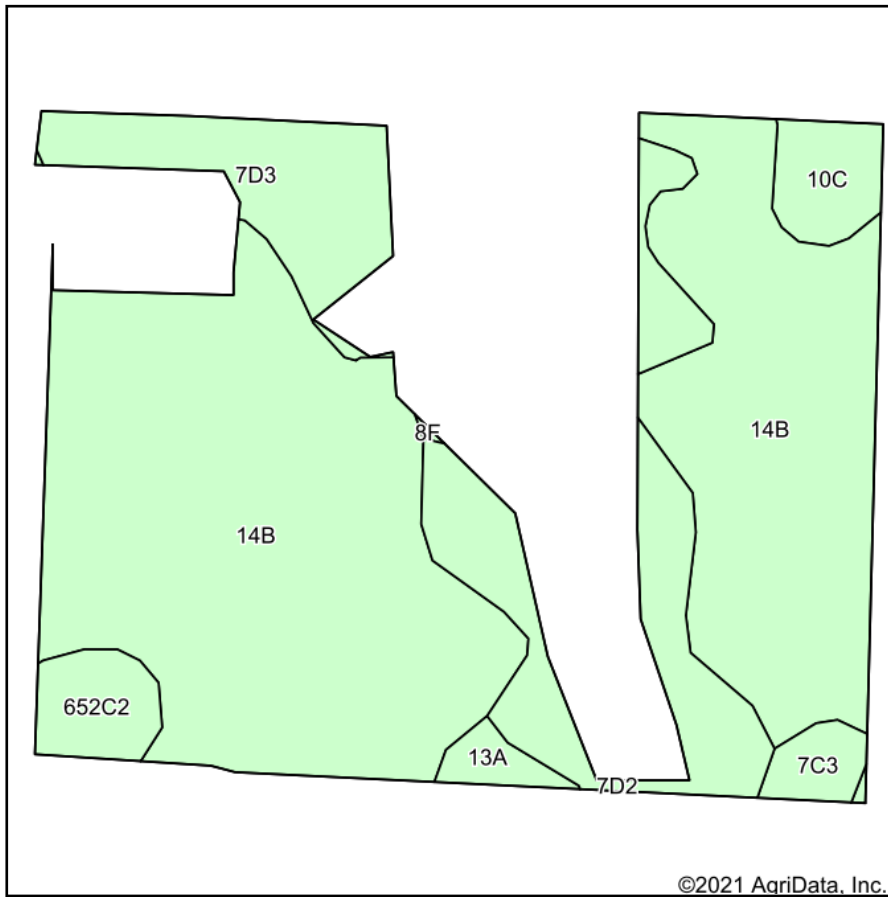


© AgriData, Inc. 2021

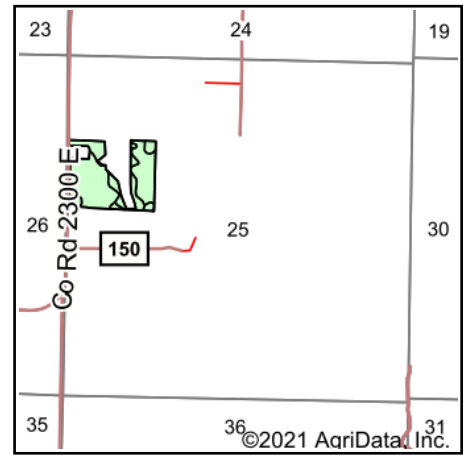
www.AgriDataInc.com

Field borders provided by Farm Service Agency as of 5/21/2008.

Soils Map



Soils data provided by USDA and NRCS.



State: **Illinois**
 County: **Marion**
 Location: **25-1N-4E**
 Township: **Romine**
 Acres: **23.78**
 Date: **3/8/2021**



Maps Provided By:



Area Symbol: IL121, Soil Area Version: 17

Code	Soil Description	Acres	Percent of field	Corn Bu/A	Soybeans Bu/A	Wheat Bu/A	Grass-legume e hay, T/A	Crop productivity index for optimum management
**14B	Ava silt loam, 2 to 5 percent slopes	16.65	70.0%	**134	**44	**54	0.00	**99
**7D2	Atlas silt loam, 10 to 18 percent slopes, eroded	2.97	12.5%	**98	**34	**39	**2.95	**76
**7D3	Atlas silty clay loam, 10 to 18 percent slopes, severely eroded	2.03	8.5%	**81	**28	**32	**2.42	**62
**652C2	Passport silt loam, 5 to 10 percent slopes, eroded	0.72	3.0%	**116	**39	**51	**3.85	**88
**10C	Plumfield silty clay loam, 5 to 10 percent slopes	0.71	3.0%	**103	**34	**39	**3.37	**78
**7C3	Atlas silty clay loam, 5 to 10 percent slopes, severely eroded	0.39	1.6%	**87	**30	**34	**2.60	**67
13A	Bluford silt loam, 0 to 2 percent slopes	0.31	1.3%	136	44	55	3.39	101
Weighted Average				122.8	40.7	49.4	0.88	91.5

Table: Optimum Crop Productivity Ratings for Illinois Soil by K.R. Olson and J.M. Lang, Office of Research, ACES, University of Illinois at Champaign-Urbana. Version: 1/2/2012 Amended Table S2 B811

Crop yields and productivity indices for optimum management (B811) are maintained at the following NRES web site: <http://soilproductivity.nres.illinois.edu/>

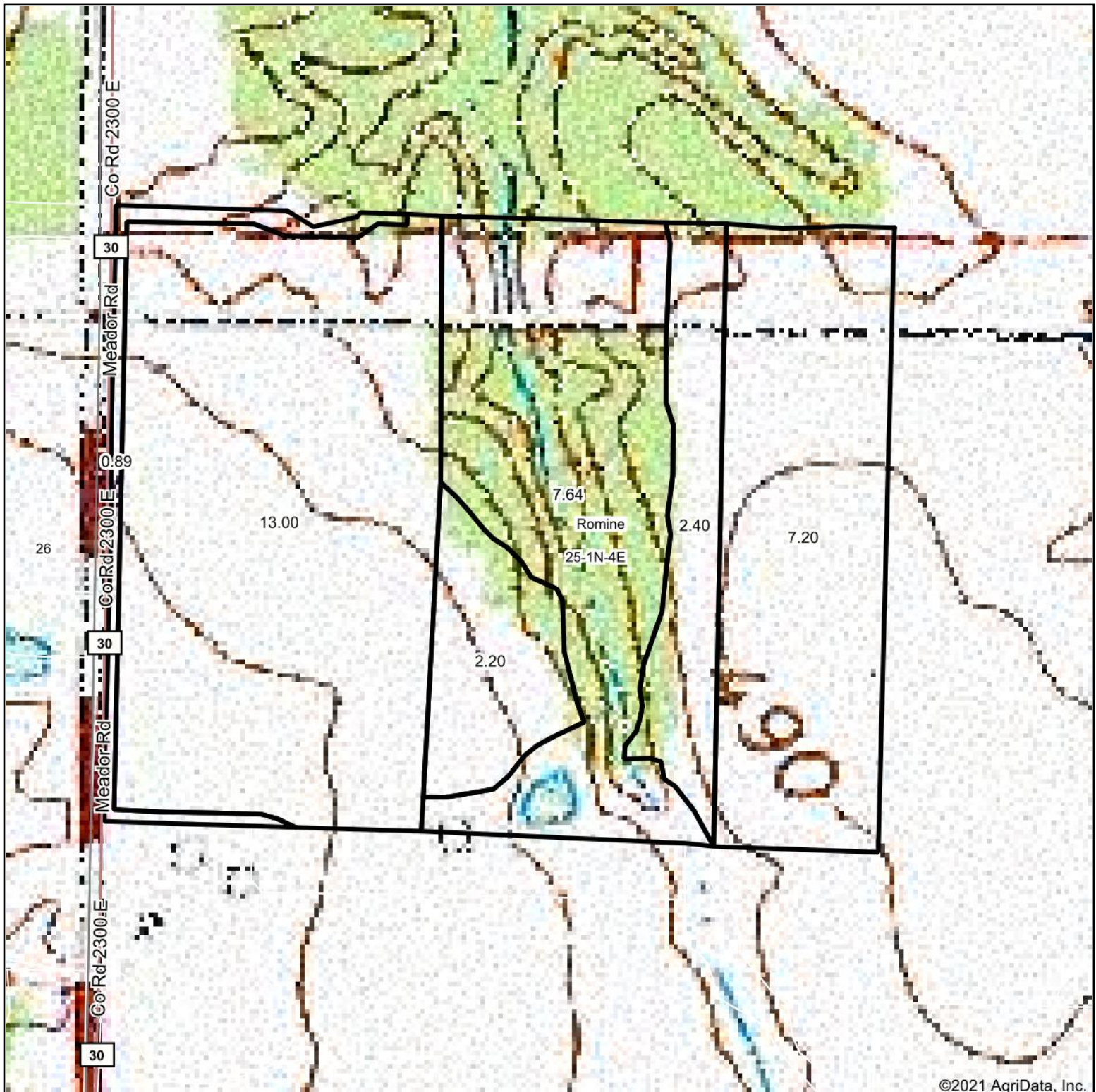
** Indexes adjusted for slope and erosion according to Bulletin 811 Table S3

e Soils in the well drained group were not rated for grass-legume and are shown with a zero "0".

*c: Using Capabilities Class Dominant Condition Aggregation Method

Soils data provided by USDA and NRCS. Soils data provided by University of Illinois at Champaign-Urbana.

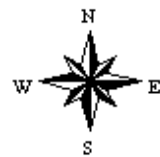
Topography Map



map center: 38° 29' 56.22, -88° 42' 54.13

0ft 271ft 541ft

25-1N-4E
Marion County
Illinois



3/8/2021



Maps Provided By:



© AgriData, Inc. 2021

www.AgriDataInc.com

Field borders provided by Farm Service Agency as of 5/21/2008.