



ONLINE LAND AUCTION

229.6 ACRES

Jamie Keller - Managing Broker
618-713-7677

SOLD AS ONE PARCEL

SOLD!

CLOSED 3/17/21

\$1,061,900

INFO AND BID @ www.buyafarm.com
BIDDING OPENS DEC 3
BIDDING CLOSSES DEC 10 @ 8 PM

Property Lines Are Approximate

Alexander County, IL East of Olive Branch



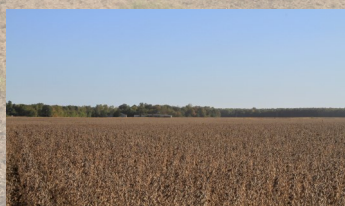
Buyafarm.com
11849 County Farm Rd,
Steeleville, IL 62288

**229.6 acres of cropland in Alexander County
east of Olive Branch. 223 +/-tillable acres
with Productivity Index of 104. Fronts IL
Hwy 127, Sandy Ridge Rd and Unity Rd.
Possession at closing. Sold in one tract by
taxable acres. No survey provided.**

Go to **www.buyafarm.com** for details and to register.

Call or text Managing Broker, **Jamie Keller 618-713-7677**

Terms: 10% down. Close within 45 days. No buyer's commission. Wayne Keller auctioneer IL Lic#441.002475



Got property to sell? Call Jamie Keller 618-713-7677 Licensed in Missouri and Illinois