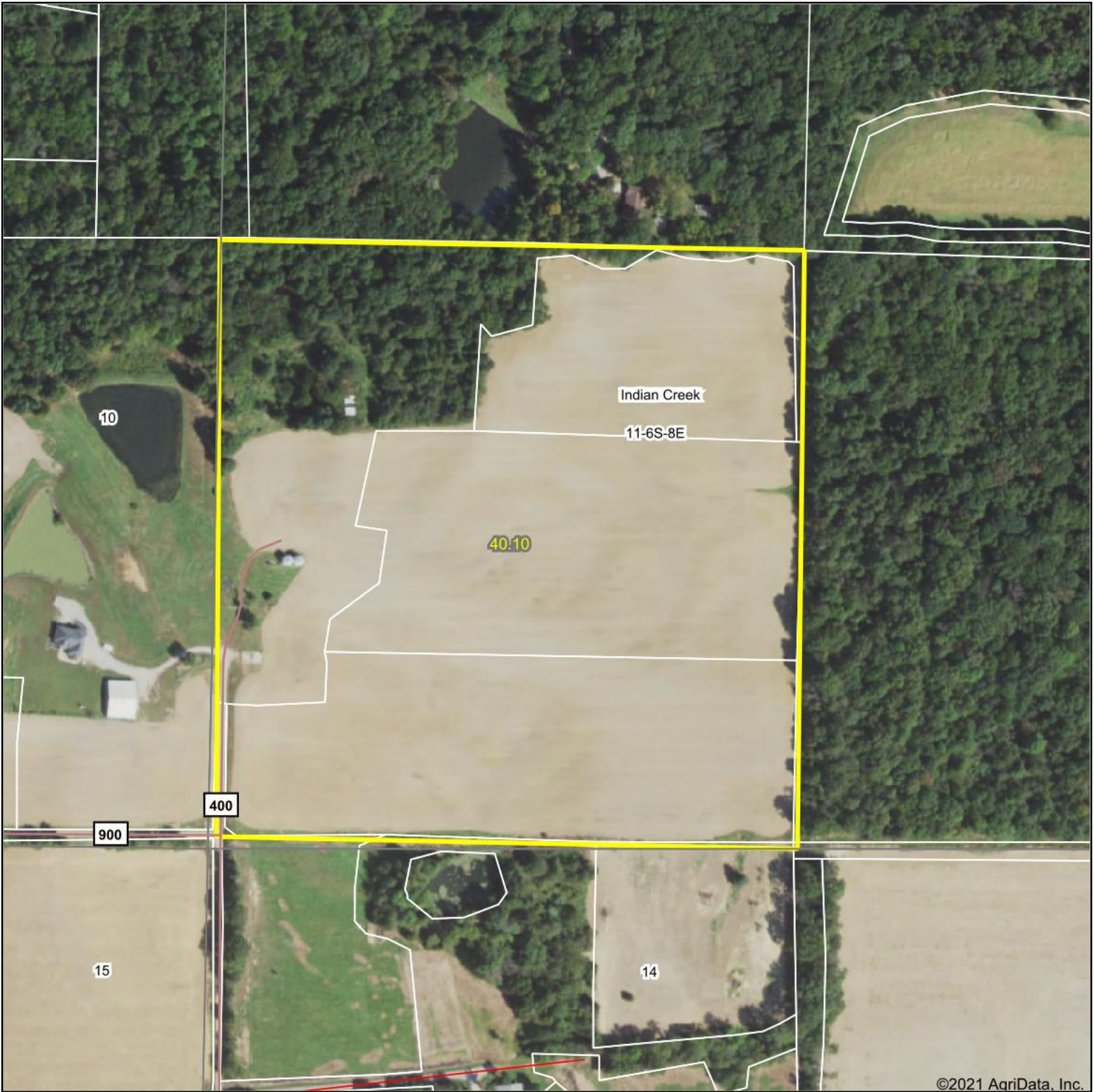


Aerial Map

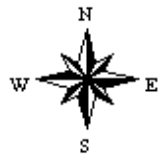


©2021 AgriData, Inc.

Map Center: 38° 0' 42.91, -88° 17' 55.34



11-6S-8E
White County
Illinois



2/19/2021



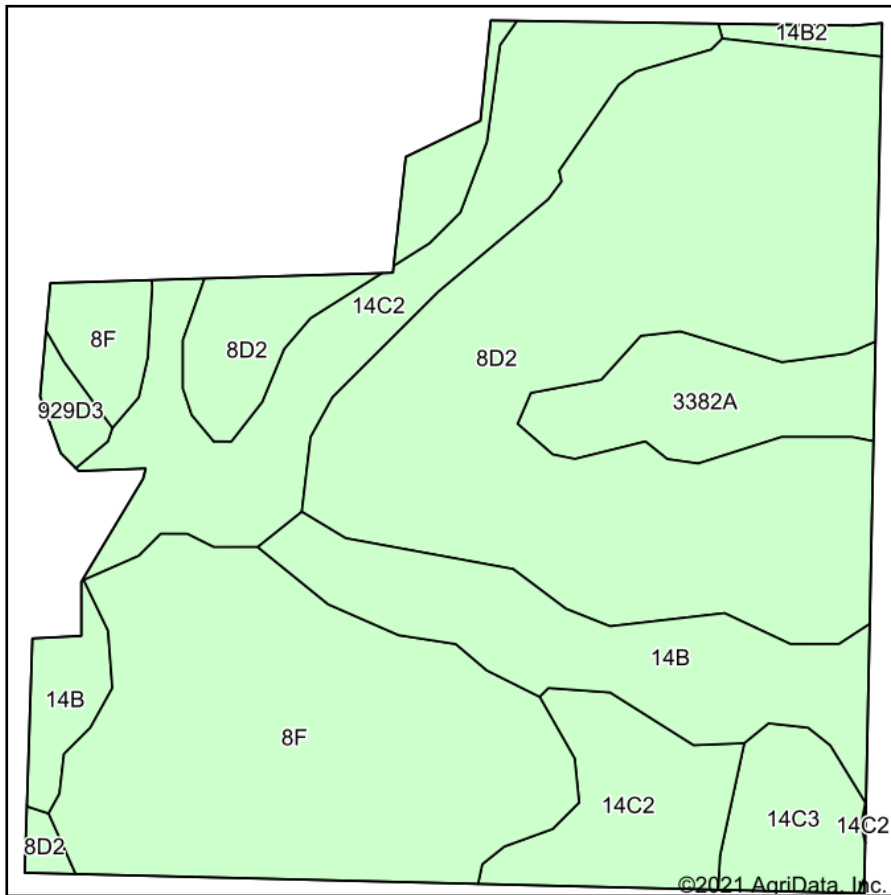
Maps Provided By:



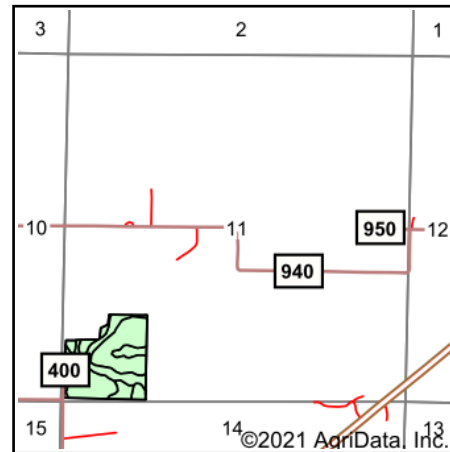
© AgriData, Inc. 2021 www.AgriDataInc.com

Field borders provided by Farm Service Agency as of 5/21/2008.

Soils Map



Soils data provided by USDA and NRCS.



State: **Illinois**
 County: **White**
 Location: **11-6S-8E**
 Township: **Indian Creek**
 Acres: **30.86**
 Date: **2/19/2021**



Maps Provided By:



© AgriData, Inc. 2021

www.AgriDataInc.com



Code	Soil Description	Acres	Percent of field	Corn Bu/A	Soybeans Bu/A	Wheat Bu/A	Grass-legume e hay, T/A	Crop productivity index for optimum management
**8D2	Hickory silt loam, 10 to 18 percent slopes, eroded	12.03	39.0%	**108	**36	**44	0.00	**82
**8F	Hickory silt loam, 18 to 35 percent slopes	7.15	23.2%	**86	**29	**35	0.00	**65
**14C2	Ava silt loam, 5 to 10 percent slopes, eroded	5.20	16.9%	**122	**40	**50	0.00	**90
**14B	Ava silt loam, 2 to 5 percent slopes	3.42	11.1%	**134	**44	**54	0.00	**99
3382A	Belknap silt loam, 0 to 2 percent slopes, frequently flooded	1.61	5.2%	156	52	63	4.89	117
**14C3	Ava silty clay loam, 5 to 10 percent slopes, severely eroded	1.02	3.3%	**100	**33	**41	0.00	**74
**929D3	Hickory-Ava complex, 10 to 18 percent slopes, severely eroded	0.24	0.8%	**89	**30	**37	**2.46	**68
**14B2	Ava silt loam, 2 to 5 percent slopes, eroded	0.19	0.6%	**126	**41	**51	0.00	**93
Weighted Average				110.3	36.7	44.9	0.27	82.8

Table: Optimum Crop Productivity Ratings for Illinois Soil by K.R. Olson and J.M. Lang, Office of Research, ACES, University of Illinois at Champaign-Urbana. Version: 1/2/2012 Amended Table S2 B811

Crop yields and productivity indices for optimum management (B811) are maintained at the following NRES web site: <http://soilproductivity.nres.illinois.edu/>

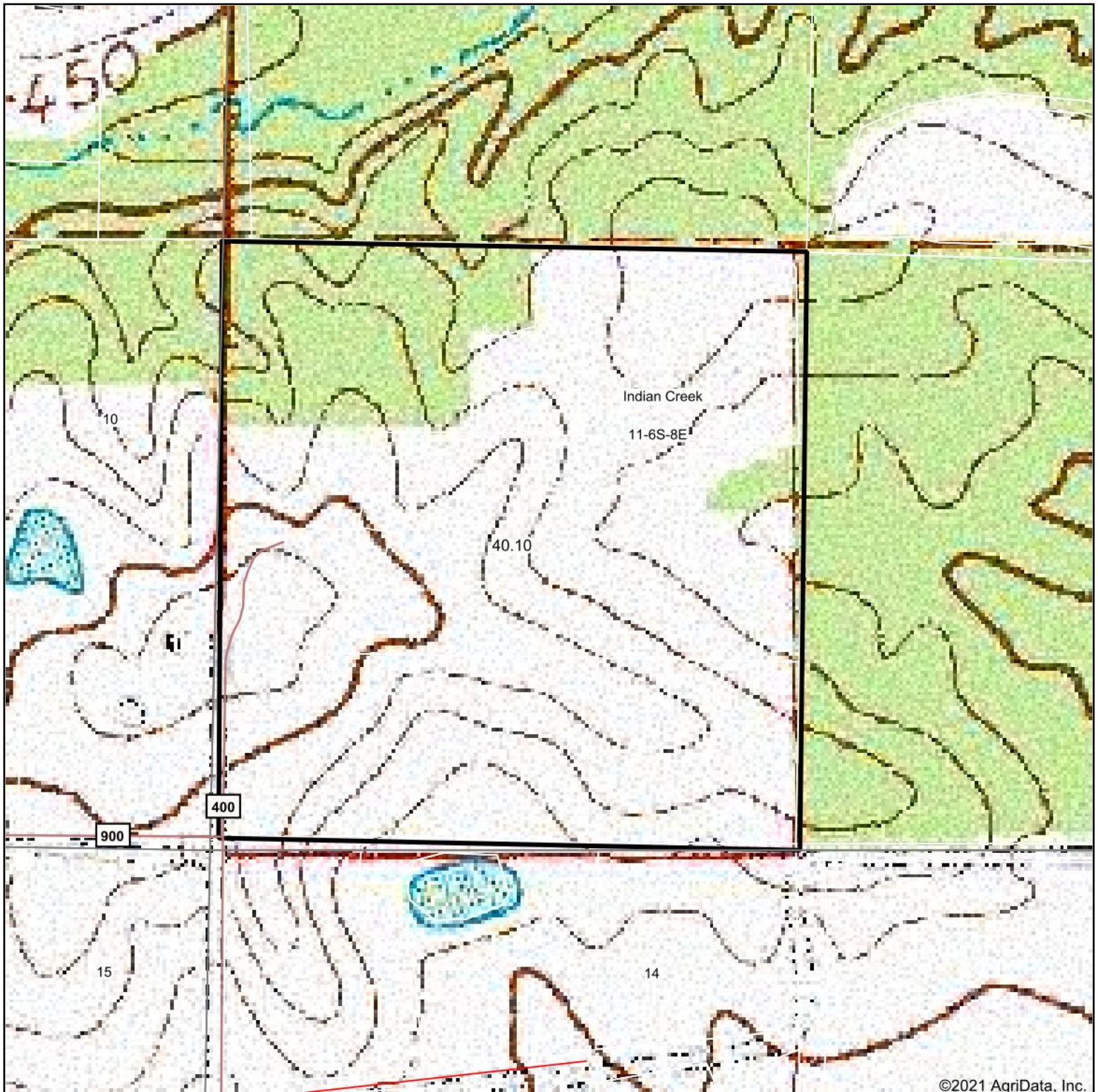
** Indexes adjusted for slope and erosion according to Bulletin 811 Table S3

e Soils in the well drained group were not rated for grass-legume and are shown with a zero "0".

*c: Using Capabilities Class Dominant Condition Aggregation Method

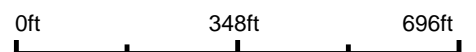
Soils data provided by USDA and NRCS. Soils data provided by University of Illinois at Champaign-Urbana.

Topography Map

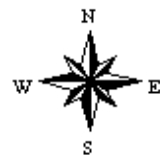


©2021 AgriData, Inc.

map center: 38° 0' 42.91, -88° 17' 55.34



11-6S-8E
White County
Illinois



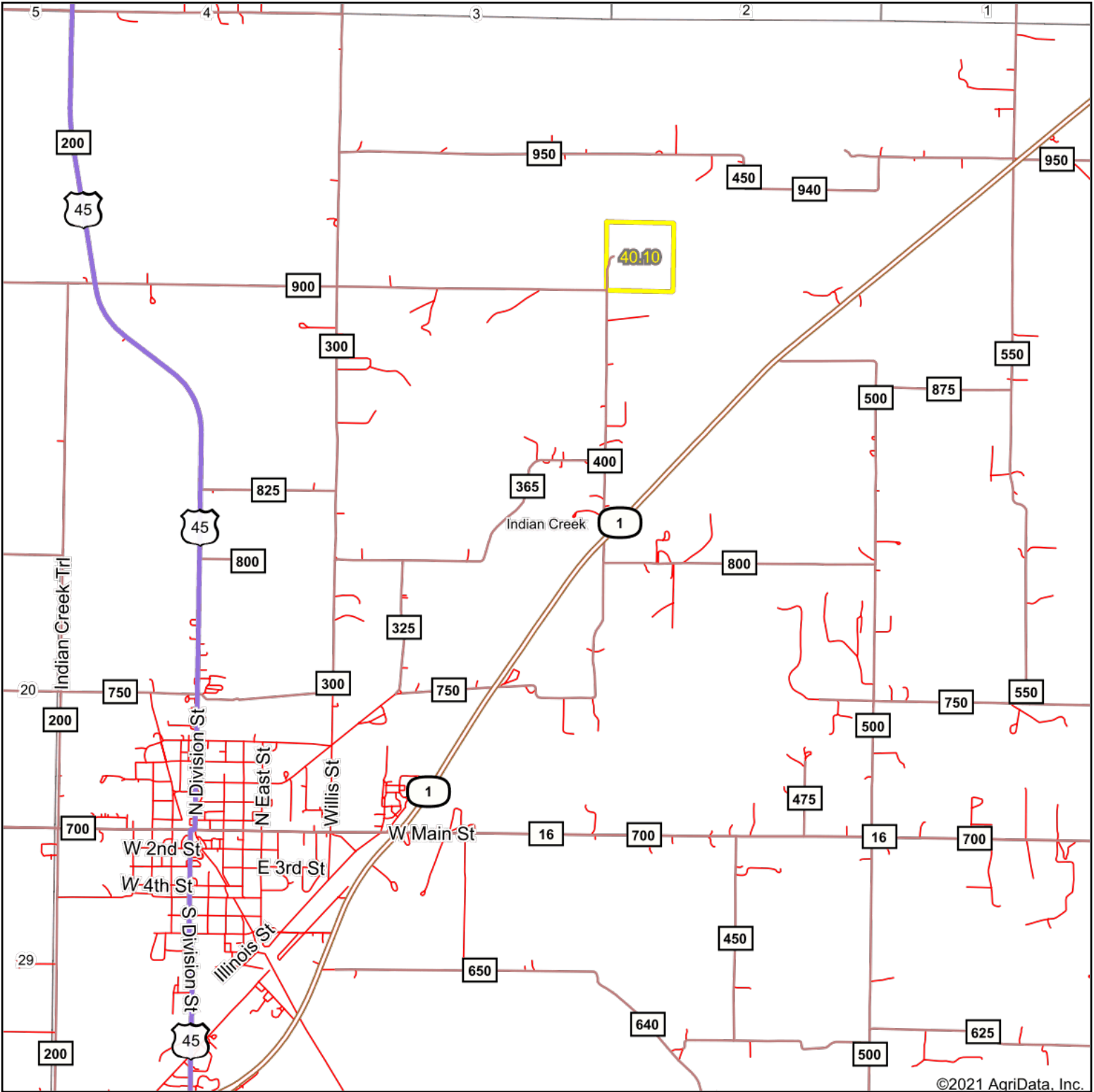
Maps Provided By:

CUSTOMIZED ONLINE MAPPING
© AgriData, Inc. 2021 www.AgriDataInc.com

2/19/2021

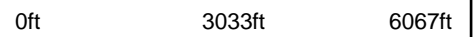
Field borders provided by Farm Service Agency as of 5/21/2008.

Overview Map



©2021 AgriData, Inc.

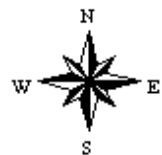
map center: 37° 59' 46.73, -88° 18' 18.2



Maps Provided By



© AgriData, Inc. 2021 www.AgriDataInc.com



2/19/2021