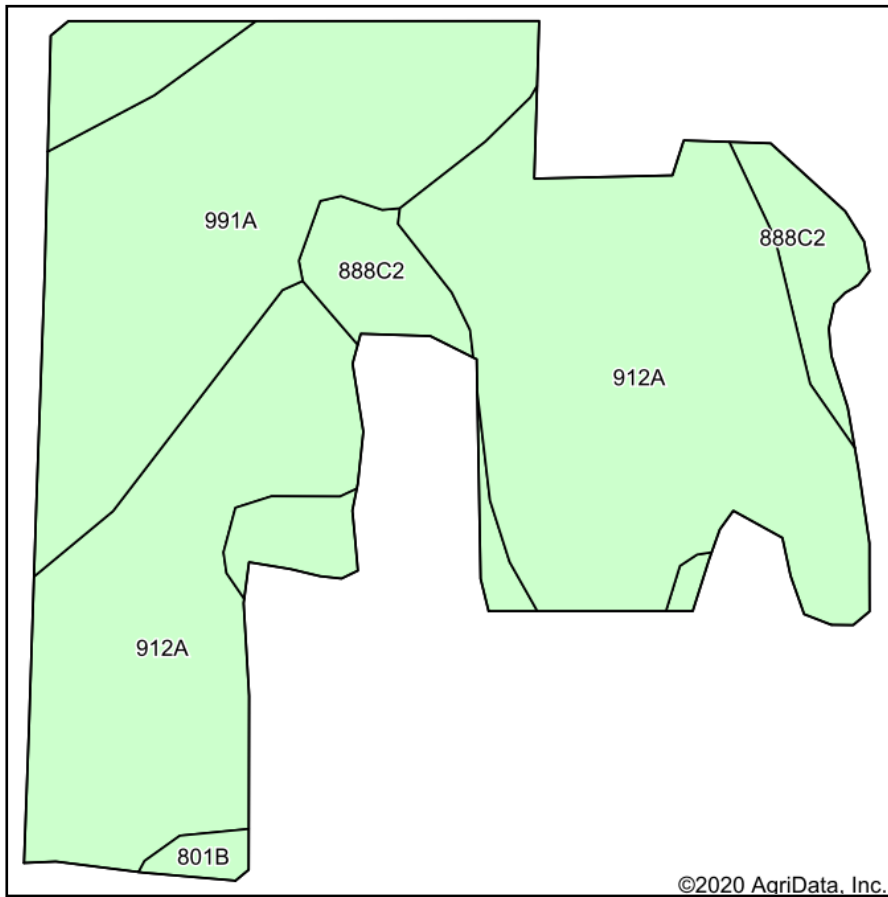
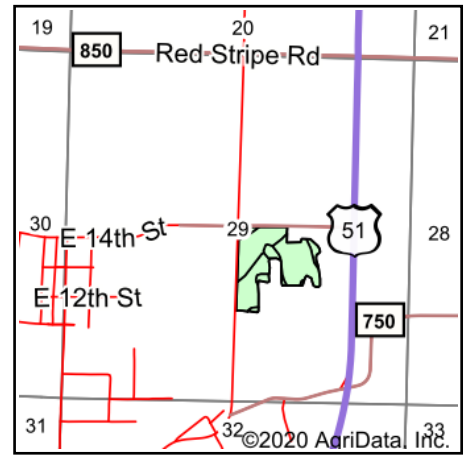


# Soils Map



Soils data provided by USDA and NRCS.



State: **Illinois**  
 County: **Marion**  
 Location: **29-2N-1E**  
 Township: **Sandoval**  
 Acres: **23.96**  
 Date: **10/22/2020**



Maps Provided By:



Area Symbol: IL121, Soil Area Version: 17

Code	Soil Description	Acres	Percent of field	Il. State Productivity Index Legend	Corn Bu/A	Soybeans Bu/A	Wheat Bu/A	Crop productivity index for optimum management
912A	Hoyleton-Darmstadt silt loams, 0 to 2 percent slopes	14.38	60.0%		134	45	52	103
991A	Cisne-Huey silt loams, 0 to 2 percent slopes	6.87	28.7%		133	45	52	102
**888C2	Passport-Grantfork silt loams, 5 to 10 percent slopes, eroded	2.49	10.4%		**108	**37	**45	**85
801B	Orthents, silty, undulating	0.22	0.9%					
<b>Weighted Average</b>					<b>129.8</b>	<b>43.7</b>	<b>50.8</b>	<b>99.9</b>

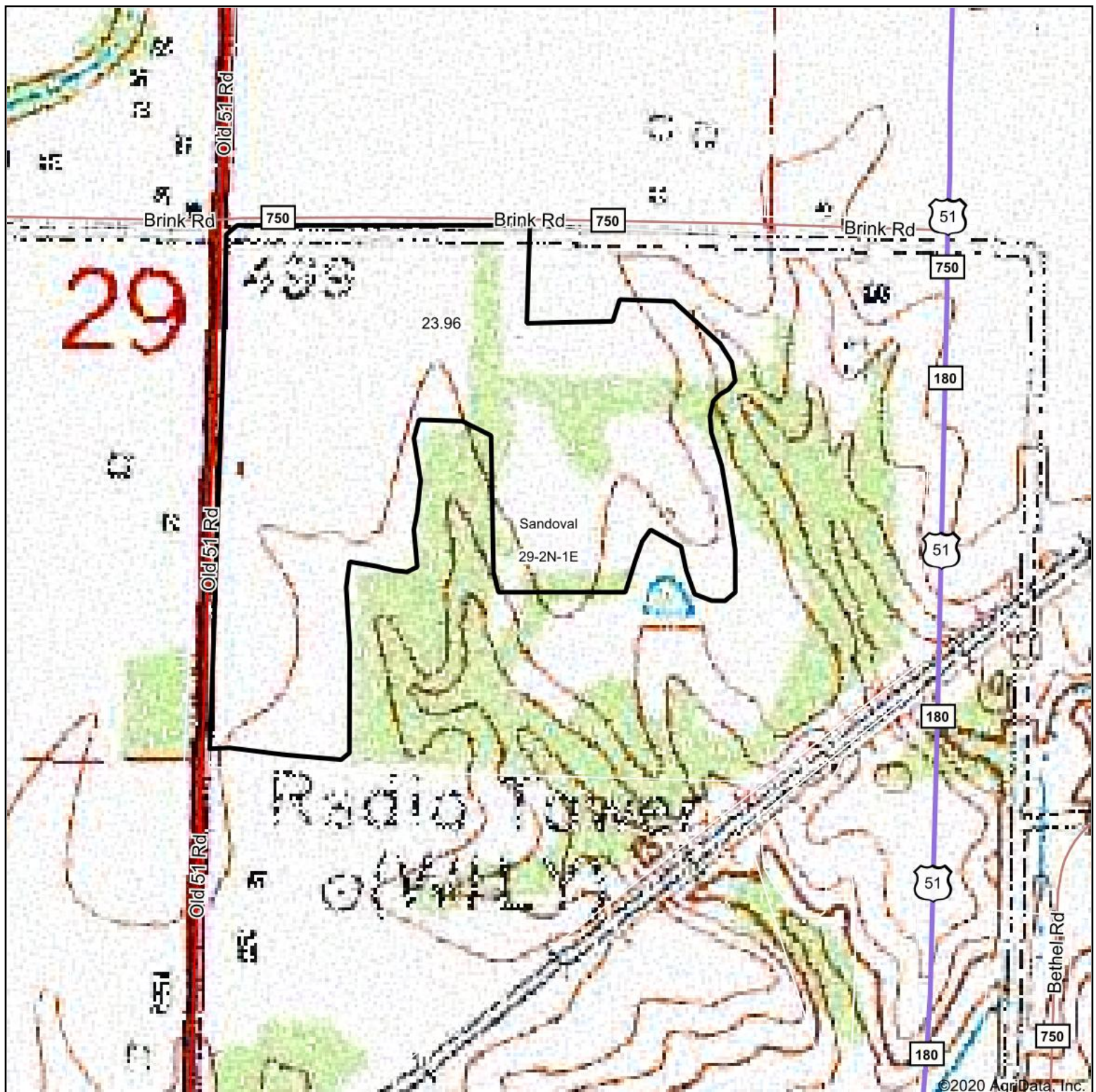
**Table: Optimum Crop Productivity Ratings for Illinois Soil by K.R. Olson and J.M. Lang, Office of Research, ACES, University of Illinois at Champaign-Urbana.** Version: 1/2/2012 Amended Table S2 B811

Crop yields and productivity indices for optimum management (B811) are maintained at the following NRES web site: <http://soilproductivity.nres.illinois.edu/>

\*\* Indexes adjusted for slope and erosion according to Bulletin 811 Table S3

Soils data provided by USDA and NRCS. Soils data provided by University of Illinois at Champaign-Urbana.

# Topography Map



map center: 38° 34' 52.32, -89° 6' 42.3

0ft 382ft 765ft



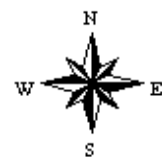
Maps Provided By:



© AgriData, Inc. 2020

www.AgridataInc.com

**29-2N-1E**  
**Marion County**  
**Illinois**



10/22/2020

Field borders provided by Farm Service Agency as of 5/21/2008.