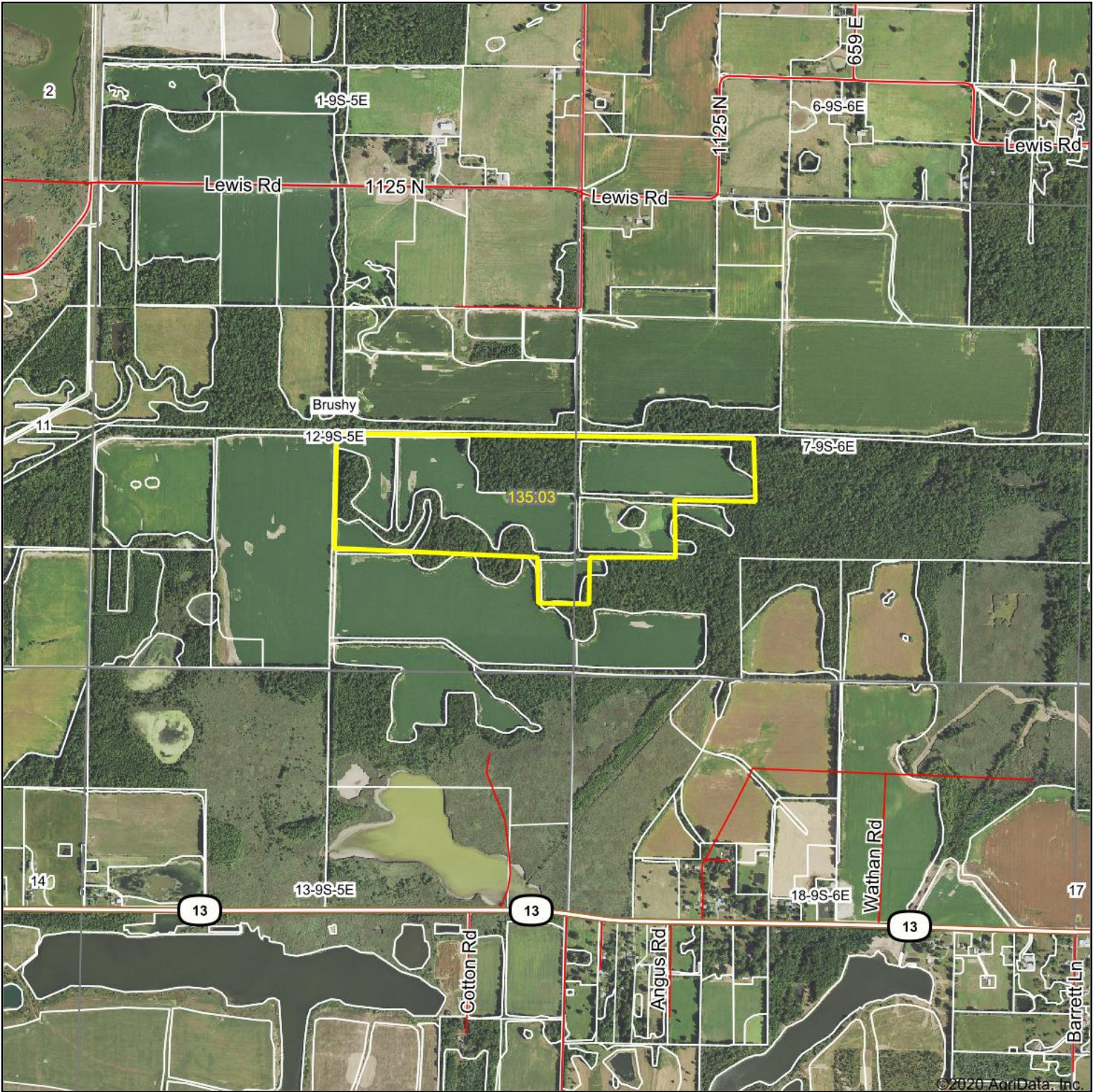
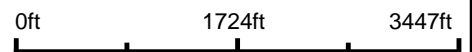


Aerial Map



©2020 AgriData, Inc.

Map Center: 37° 45' 0.43, -88° 35' 52.43



12-9S-5E
Saline County
Illinois

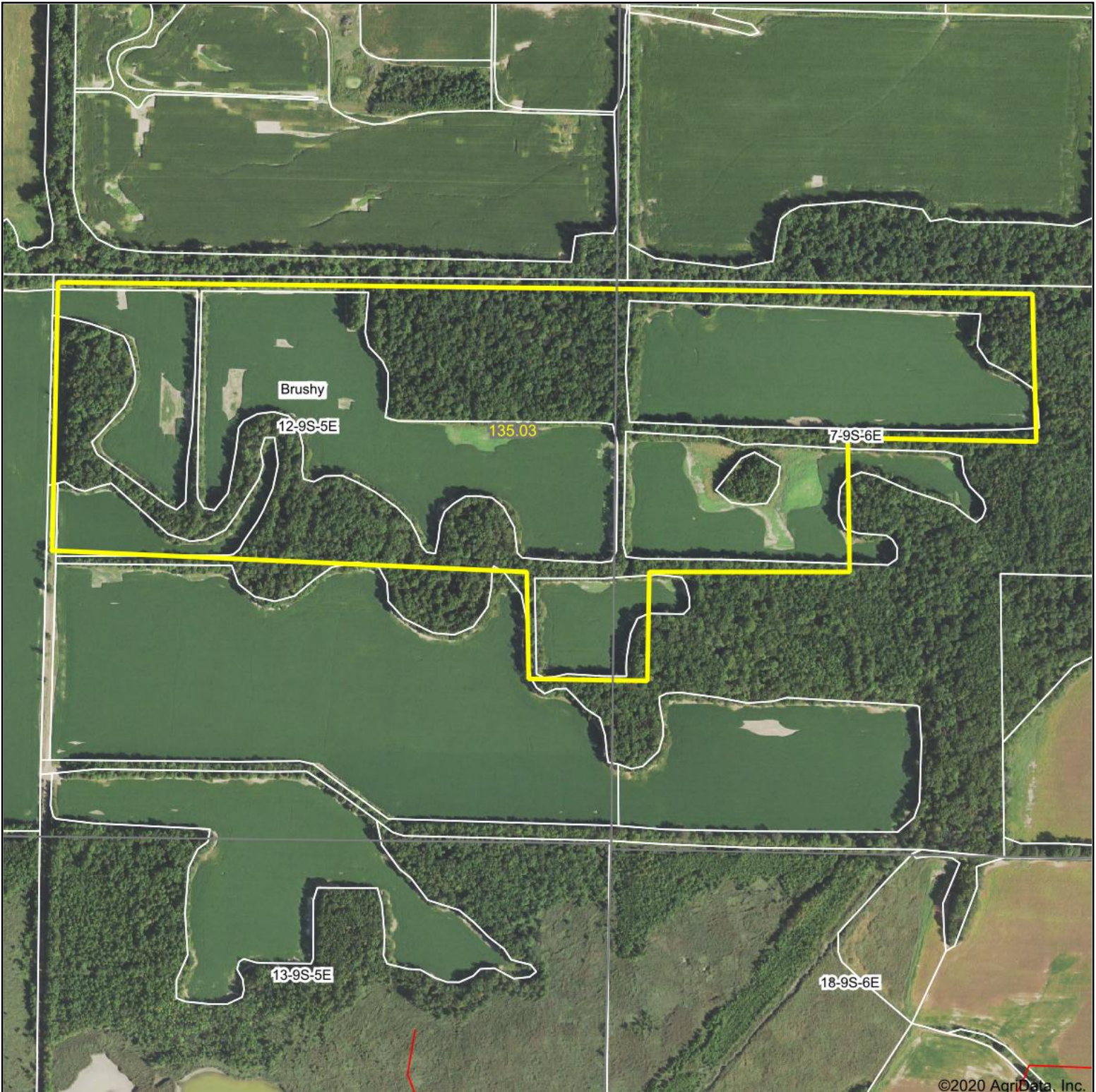


10/2/2020

Maps Provided By:
 **surety**
CUSTOMIZED ONLINE MAPPING
© AgriData, Inc. 2020 www.AgriDataInc.com

Field borders provided by Farm Service Agency as of 5/21/2008.

Aerial Map



©2020 AgriData, Inc.

Map Center: 37° 45' 0.44, -88° 35' 52.45



12-9S-5E
Saline County
Illinois



10/2/2020



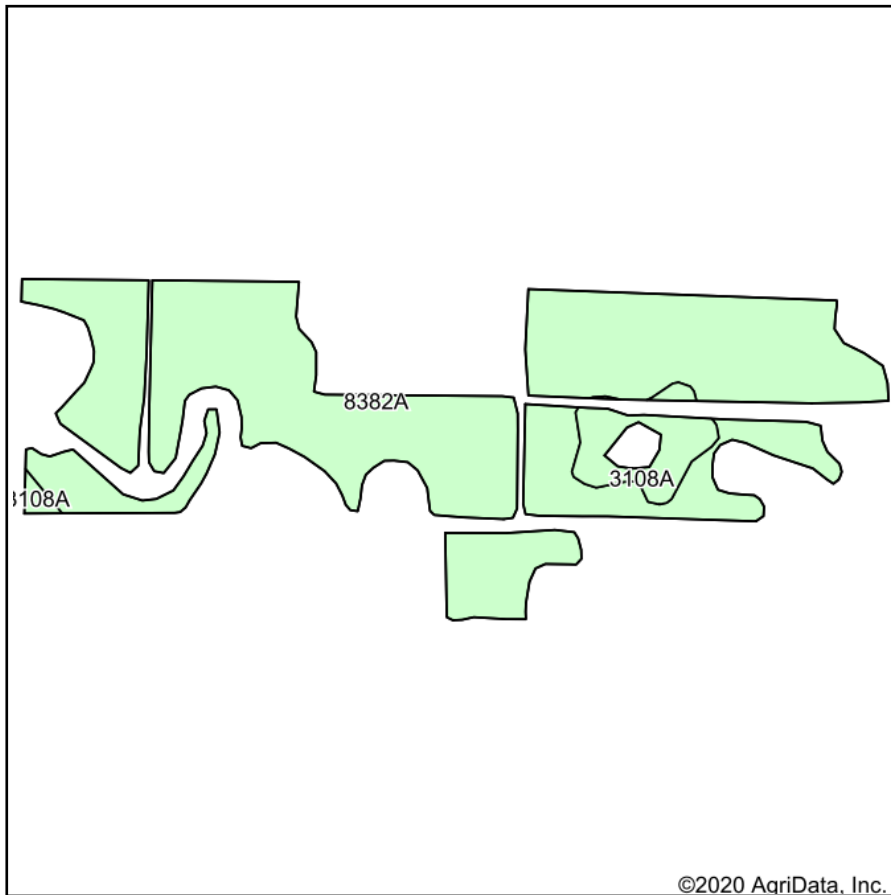
Maps Provided By:



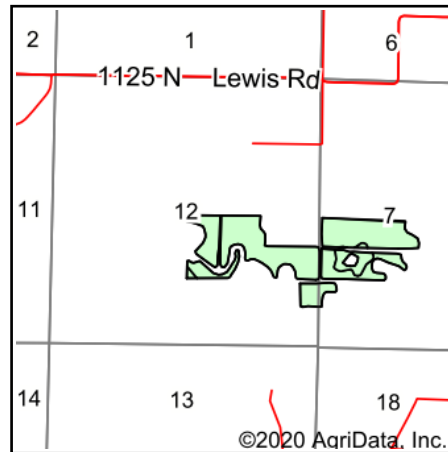
© AgriData, Inc. 2020 www.AgriDataInc.com

Field borders provided by Farm Service Agency as of 5/21/2008.

Soils Map



Soils data provided by USDA and NRCS.



State: **Illinois**
 County: **Saline**
 Location: **12-9S-5E**
 Township: **Brushy**
 Acres: **88.3**
 Date: **10/2/2020**



Maps Provided By:



© AgriData, Inc. 2020

www.AgriDataInc.com



| Area Symbol: IL165. Soil Area Version: 15 | | | | | | | | | |
|---|--|-------|------------------|-------------------------------------|--------------|---------------|-------------|-----------------------|--|
| Code | Soil Description | Acres | Percent of field | Il. State Productivity Index Legend | Corn Bu/A | Soybeans Bu/A | Wheat Bu/A | Grass-legume hay, T/A | Crop productivity index for optimum management |
| 8382A | Belknap silt loam, 0 to 2 percent slopes, occasionally flooded | 82.20 | 93.1% | | 156 | 52 | 63 | 4.89 | 117 |
| 3108A | Bonnie silt loam, 0 to 2 percent slopes, frequently flooded | 6.10 | 6.9% | | 149 | 49 | 59 | 4.64 | 111 |
| Weighted Average | | | | | 155.5 | 51.8 | 62.7 | 4.87 | 116.6 |

Table: Optimum Crop Productivity Ratings for Illinois Soil by K.R. Olson and J.M. Lang, Office of Research, ACES, University of Illinois at Champaign-Urbana. Version: 1/2/2012 Amended Table S2 B811

Crop yields and productivity indices for optimum management (B811) are maintained at the following NRES web site: <http://soilproductivity.nres.illinois.edu/>

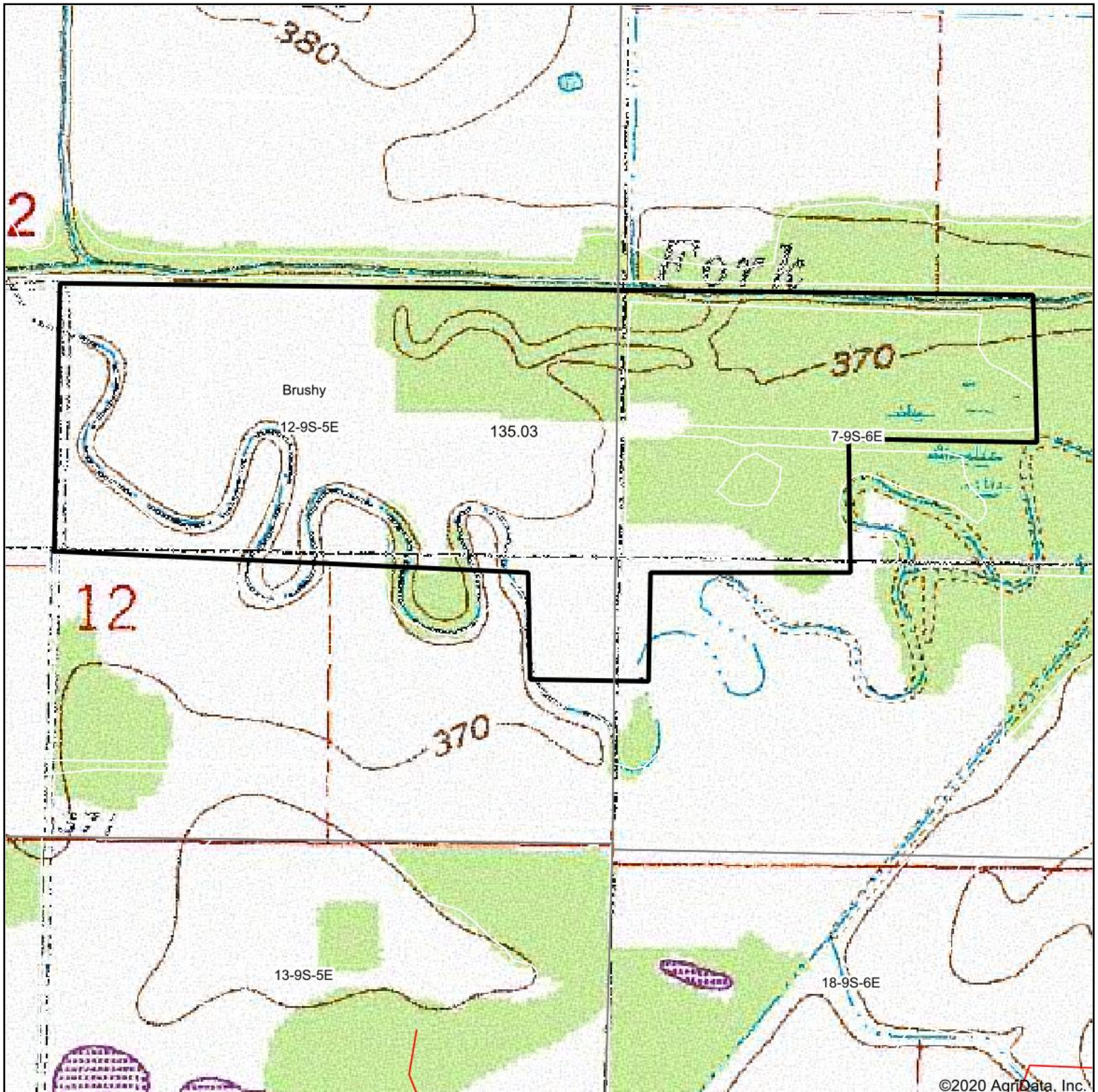
** Indexes adjusted for slope and erosion according to Bulletin 811 Table S3

^e Soils in the well drained group were not rated for grass-legume and are shown with a zero "0".

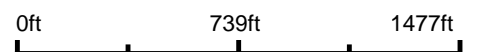
*c: Using Capabilities Class Dominant Condition Aggregation Method

Soils data provided by USDA and NRCS. Soils data provided by University of Illinois at Champaign-Urbana.

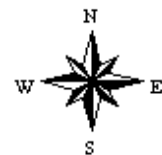
Topography Map



map center: 37° 45' 0.44, -88° 35' 52.45



12-9S-5E
Saline County
Illinois



10/2/2020



Maps Provided By:



© AgriData, Inc. 2020

www.AgrIDataInc.com