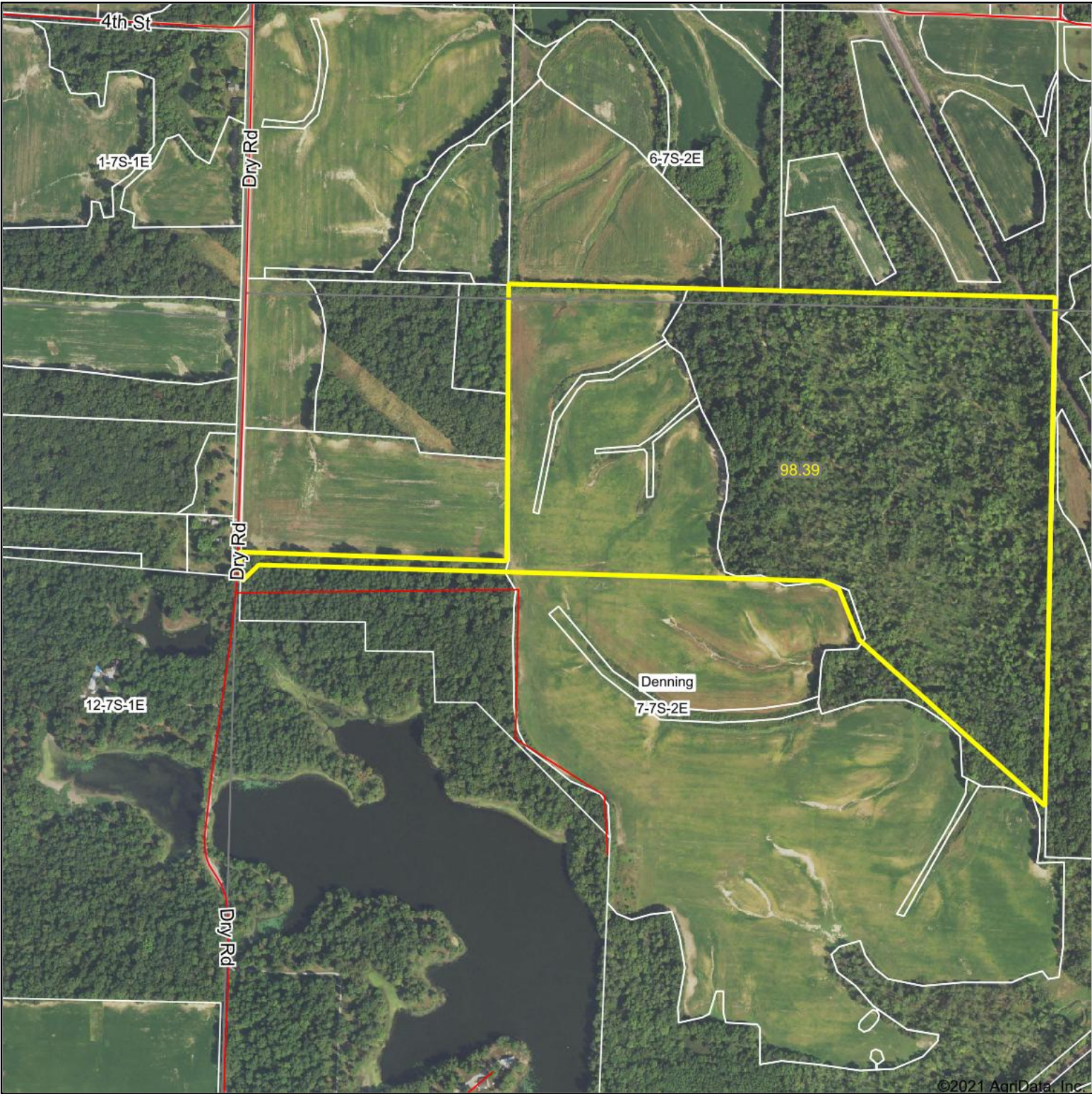
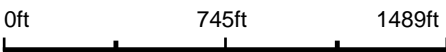


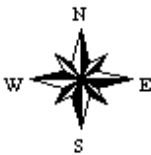
Aerial Map



Map Center: 37° 55' 56.22, -89° 2' 4.56



7-7S-2E
Franklin County
Illinois



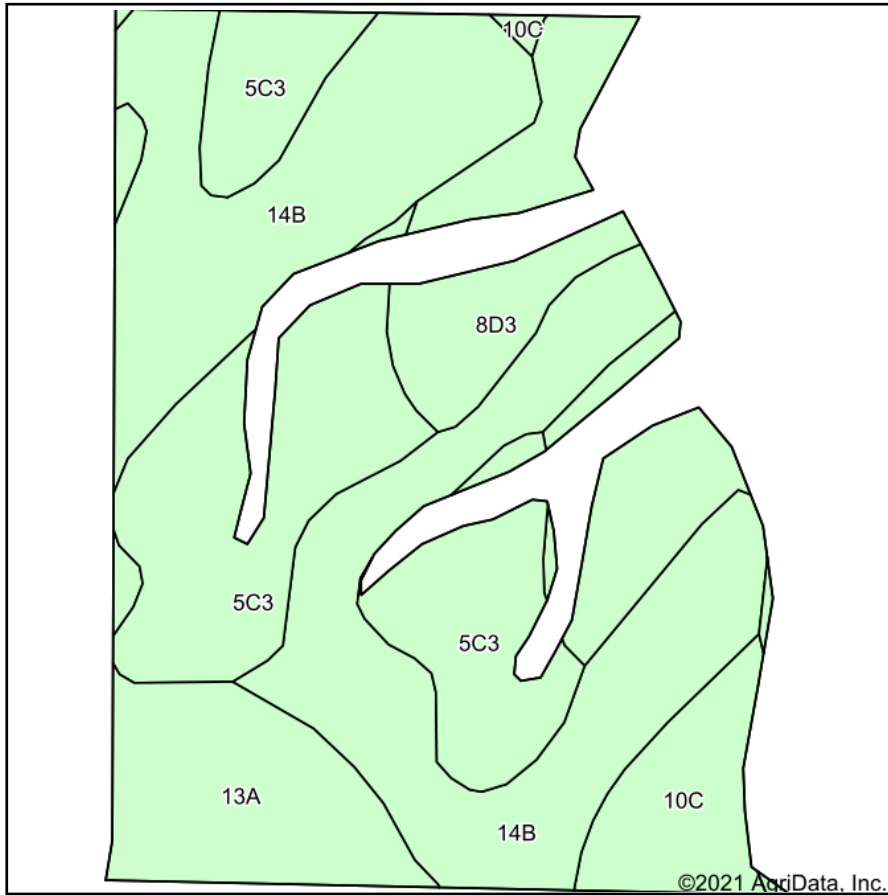
1/28/2021



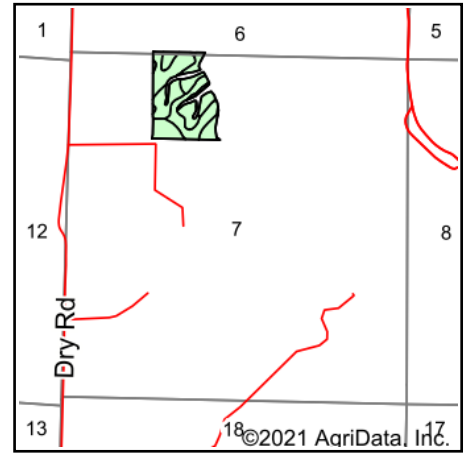
Maps Provided By:
 **surety**[®]
CUSTOMIZED ONLINE MAPPING
© AgriData, Inc. 2021 www.AgriDataInc.com

Field borders provided by Farm Service Agency as of 5/21/2008.

Soils Map



Soils data provided by USDA and NRCS.



State: **Illinois**
 County: **Franklin**
 Location: **7-7S-2E**
 Township: **Denning**
 Acres: **25.49**
 Date: **1/31/2021**



Maps Provided By:



Code	Soil Description	Acres	Percent of field	Corn Bu/A	Soybeans Bu/A	Wheat Bu/A	Crop productivity index for optimum management
**14B	Ava silt loam, 2 to 5 percent slopes	10.63	41.7%	**134	**44	**54	**99
**5C3	Blair silty clay loam, 5 to 10 percent slopes, severely eroded	6.74	26.4%	**102	**33	**41	**77
**8D3	Hickory clay loam, 10 to 18 percent slopes, severely eroded	3.74	14.7%	**98	**33	**40	**75
13A	Bluford silt loam, 0 to 2 percent slopes	2.80	11.0%	136	44	55	101
**10C	Plumfield silty clay loam, 5 to 10 percent slopes	1.58	6.2%	**103	**34	**39	**78
Weighted Average				118.6	38.9	47.7	88.6

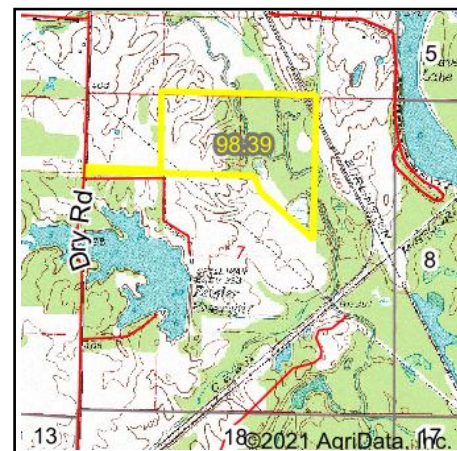
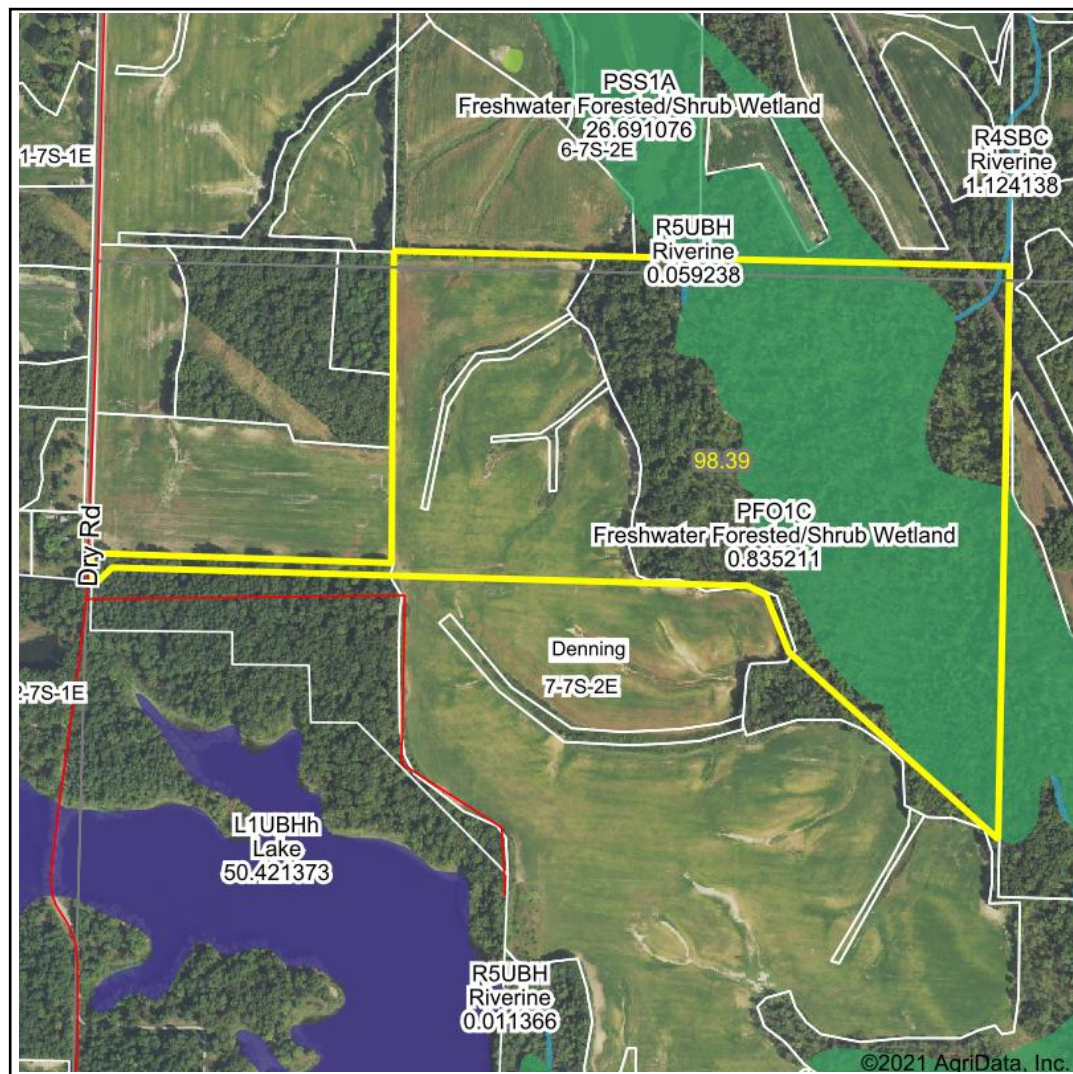
Table: Optimum Crop Productivity Ratings for Illinois Soil by K.R. Olson and J.M. Lang, Office of Research, ACES, University of Illinois at Champaign-Urbana. Version: 1/2/2012 Amended Table S2 B811

Crop yields and productivity indices for optimum management (B811) are maintained at the following NRES web site: <http://soilproductivity.nres.illinois.edu/>

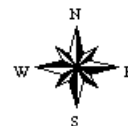
** Indexes adjusted for slope and erosion according to Bulletin 811 Table S3

Soils data provided by USDA and NRCS. Soils data provided by University of Illinois at Champaign-Urbana.

Wetlands Map



State: **Illinois**
 Location: **7-7S-2E**
 County: **Franklin**
 Township: **Denning**
 Date: **1/28/2021**

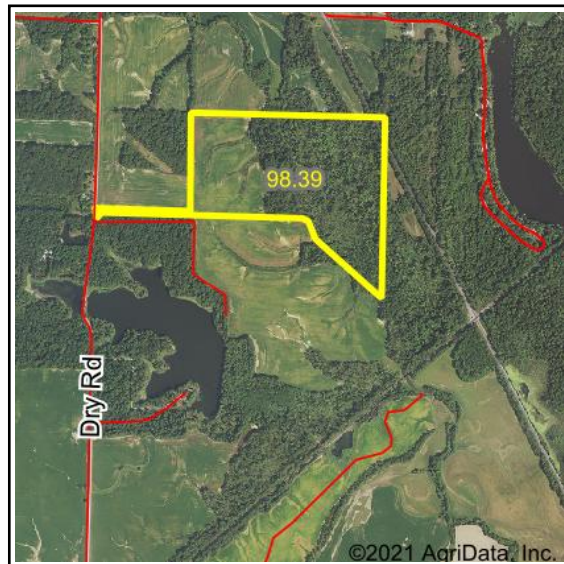
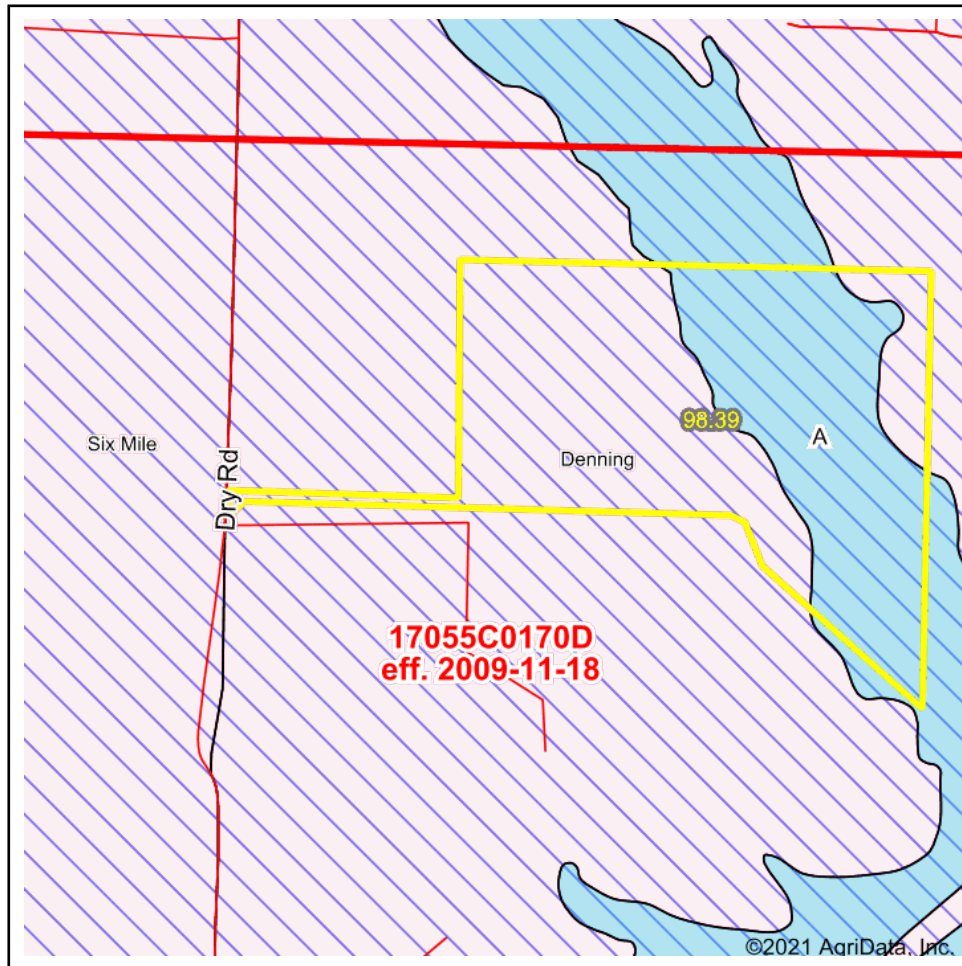


0ft 935ft 1869ft

Classification Code	Type	Acres
PFO1A	Freshwater Forested/Shrub Wetland	40.07
PFO1C	Freshwater Forested/Shrub Wetland	3.46
R4SBC	Riverine	0.15
R5UBH	Riverine	0.08
Total Acres		43.76

Data Source: National Wetlands Inventory website. U.S. DoI, Fish and Wildlife Service, Washington, D.C. <http://www.fws.gov/wetlands/>

FEMA Report



State: IL Acres: 98.39
 County: Franklin Date: 1/28/2021
 Location: 7-7S-2E
 Township: Denning

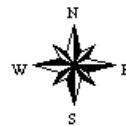


Maps Provided By



© AgriData, Inc. 2021

www.AgriDataInc.com



Name		Number	County	NFIP Participation	Acres	Percent
Franklin County		170899	Franklin	Regular	98.39	100%
Total					98.39	100%
Map Change			Date	Case No.	Acres	Percent
No					0	0%
Zone	SubType			Description	Acres	Percent
X	AREA OF MINIMAL FLOOD HAZARD			Outside 500-year Floodplain	57.18	58.1%
A				100-year Floodplain	41.21	41.9%
Total					98.39	100%
Panel			Effective Date		Acres	Percent
17055C0170D			11/18/2009		98.39	100%
Total					98.39	100%