

# Aerial Map



©2021 AgriData, Inc.

Map Center: 38° 26' 44.92, -89° 2' 25.62



**12-1S-1E**  
**Jefferson County**  
**Illinois**



1/12/2021



Maps Provided By:



© AgriData, Inc. 2020 www.AgriDataInc.com

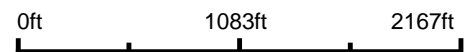
Field borders provided by Farm Service Agency as of 5/21/2008.

# Aerial Map

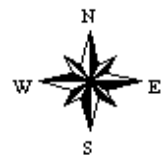


©2021 AgriData, Inc.

Map Center: 38° 26' 44.92, -89° 2' 25.62



12-1S-1E  
Jefferson County  
Illinois

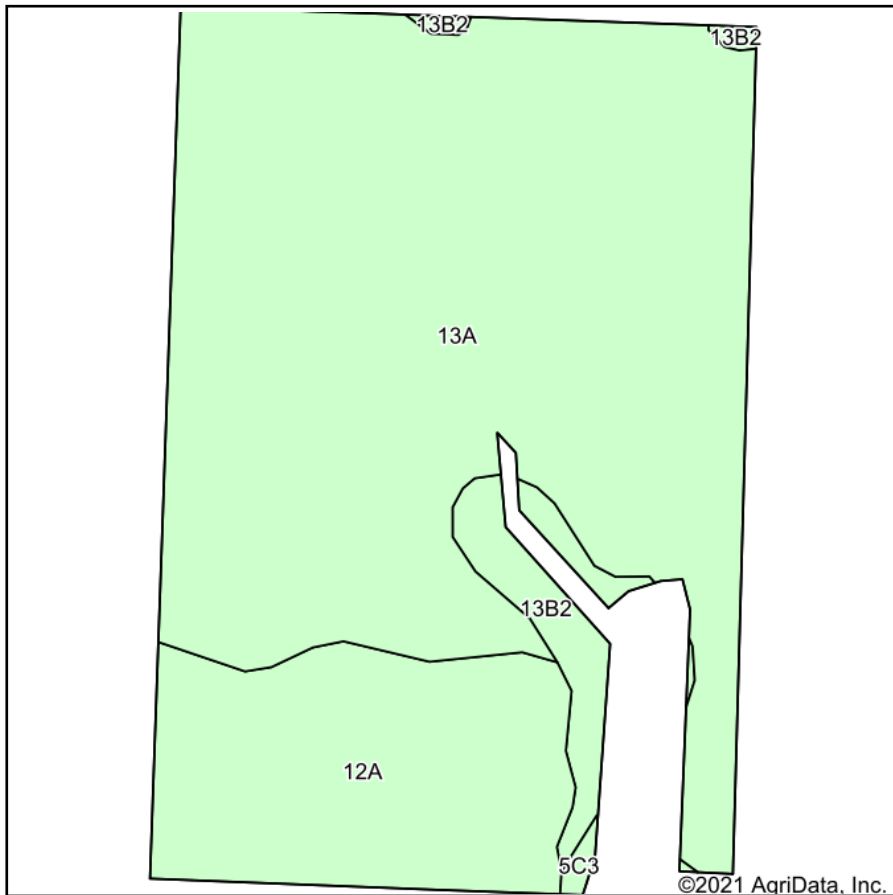


1/12/2021

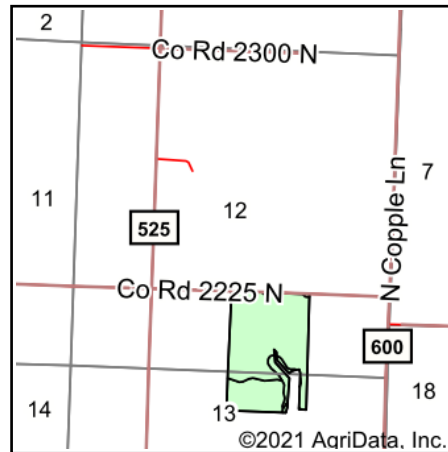
Maps Provided By:  
**surety**  
CUSTOMIZED ONLINE MAPPING  
© AgriData, Inc. 2020 www.AgridataInc.com

Field borders provided by Farm Service Agency as of 5/21/2008.

# Soils Map



Soils data provided by USDA and NRCS.



State: **Illinois**  
 County: **Jefferson**  
 Location: **12-1S-1E**  
 Township: **Grand Prairie**  
 Acres: **56.63**  
 Date: **1/12/2021**



Code	Soil Description	Acres	Percent of field	Corn Bu/A	Soybeans Bu/A	Wheat Bu/A	Grass-legume e hay T/A	Crop productivity index for optimum management
13A	Bluford silt loam, 0 to 2 percent slopes	42.30	74.7%	136	44	55	3.39	101
12A	Wynoose silt loam, 0 to 2 percent slopes	11.37	20.1%	128	42	51	4.26	97
**13B2	Bluford silt loam, 2 to 5 percent slopes, eroded	2.77	4.9%	**129	**42	**52	**3.22	**96
**5C3	Blair silty clay loam, 5 to 10 percent slopes, severely eroded	0.19	0.3%	**102	**33	**41	**3.25	**77
<b>Weighted Average</b>				<b>133.9</b>	<b>43.5</b>	<b>54</b>	<b>3.56</b>	<b>99.9</b>

**Table: Optimum Crop Productivity Ratings for Illinois Soil by K.R. Olson and J.M. Lang, Office of Research, ACES, University of Illinois at Champaign-Urbana.** Version: 1/2/2012 Amended Table S2 B811

Crop yields and productivity indices for optimum management (B811) are maintained at the following NRES web site: <http://soilproductivity.nres.illinois.edu/>

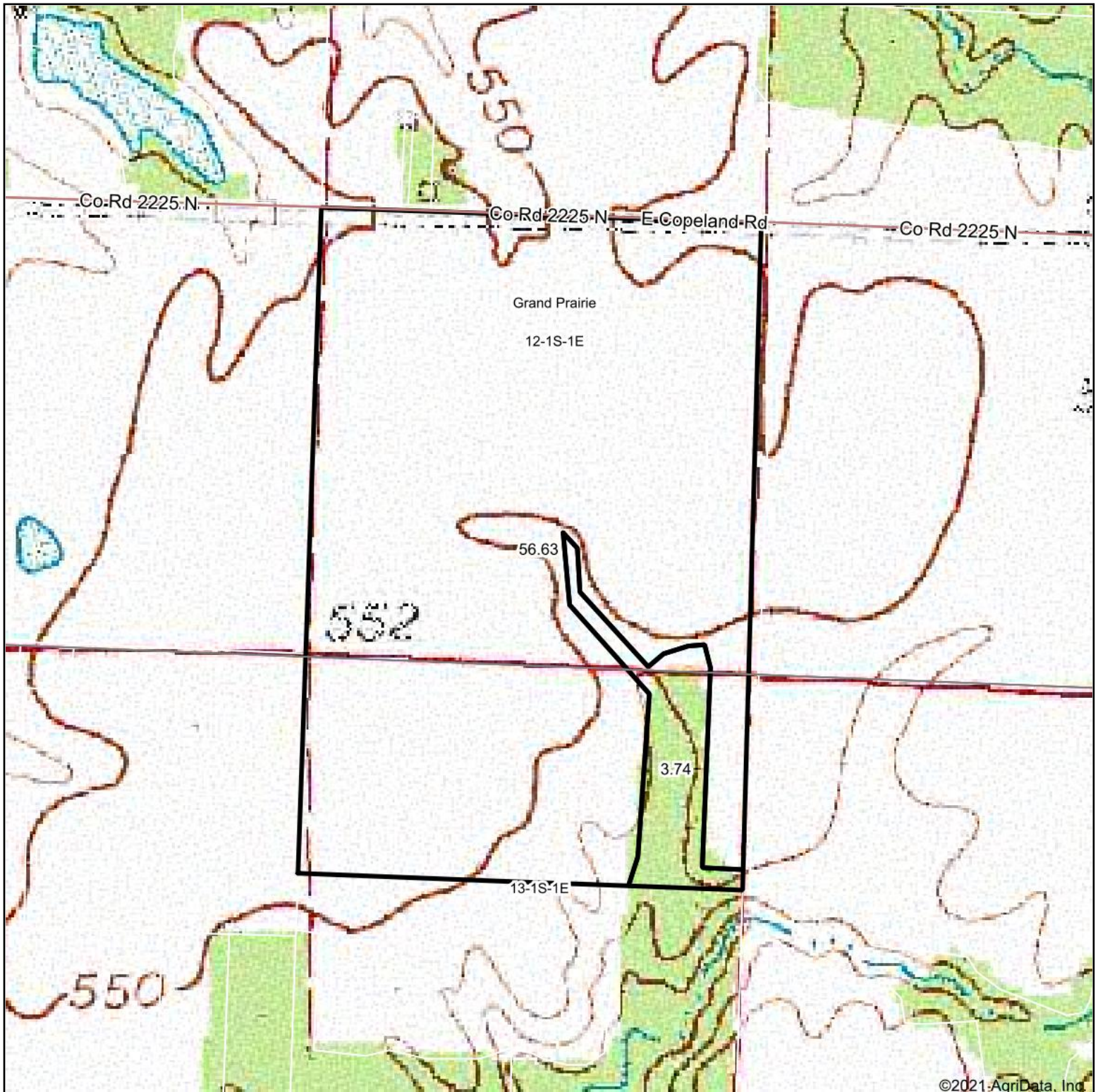
\*\* Indexes adjusted for slope and erosion according to Bulletin 811 Table S3

e Soils in the well drained group were not rated for grass-legume and are shown with a zero "0".

\*c: Using Capabilities Class Dominant Condition Aggregation Method

Soils data provided by USDA and NRCS. Soils data provided by University of Illinois at Champaign-Urbana.

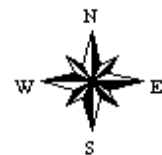
# Topography Map



map center: 38° 26' 44.92, -89° 2' 25.62



**12-1S-1E**  
**Jefferson County**  
**Illinois**



1/12/2021



Maps Provided By:



© AgriData, Inc. 2020      www.AgridataInc.com