

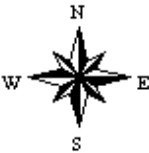
Aerial Map



Map Center: 38° 44' 25.08, -89° 11' 30.9



34-4N-1W
Fayette County
Illinois



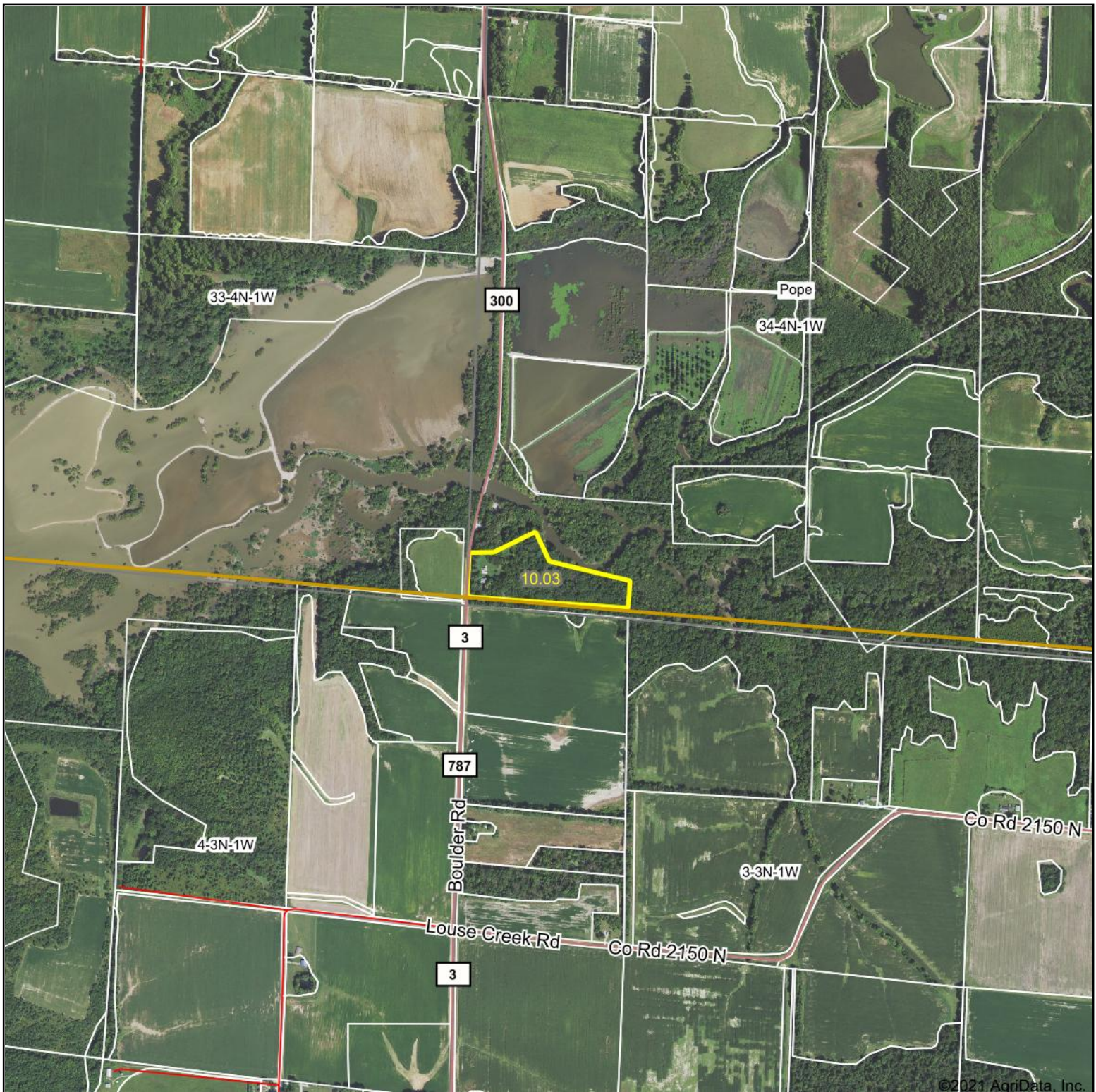
1/14/2021



Maps Provided By:
 **surety**[®]
CUSTOMIZED ONLINE MAPPING
© AgriData, Inc. 2021 www.AgriDataInc.com

Field borders provided by Farm Service Agency as of 5/21/2008.

Aerial Map



©2021 AgriData, Inc.

Map Center: 38° 44' 25.07, -89° 11' 31.07

0ft 1221ft 2442ft

34-4N-1W
Fayette County
Illinois



1/14/2021



Maps Provided By:



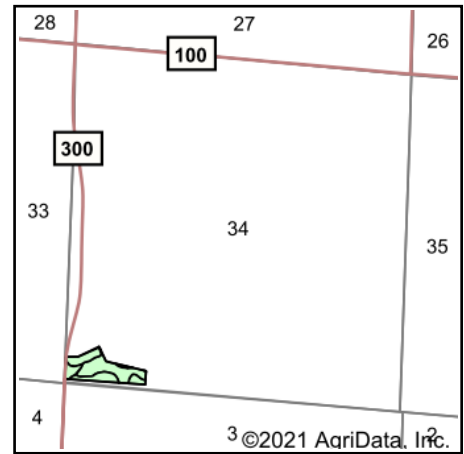
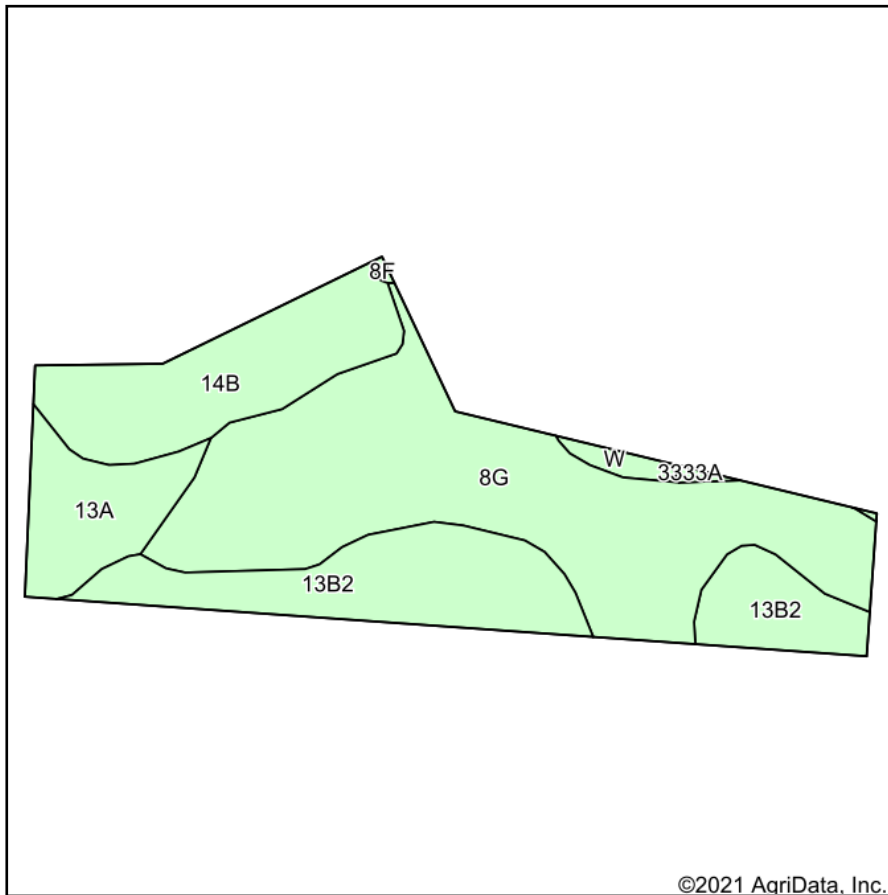
surety
CUSTOMIZED ONLINE MAPPING

© AgriData, Inc. 2021

www.AgriDataInc.com

Field borders provided by Farm Service Agency as of 5/21/2008.

Soils Map



State: **Illinois**
 County: **Fayette**
 Location: **34-4N-1W**
 Township: **Pope**
 Acres: **10.03**
 Date: **1/14/2021**



Maps Provided By:



Code	Soil Description	Acres	Percent of field	Corn Bu/A	Soybeans Bu/A	Wheat Bu/A	Grass-legume & hay, T/A	Crop productivity index for optimum management
**8G	Hickory silt loam, 35 to 60 percent slopes	4.88	48.7%	**58	**20	**24	0.00	**44
**13B2	Bluford silt loam, 2 to 5 percent slopes, eroded	2.35	23.4%	**129	**42	**52	**3.22	**96
**14B	Ava silt loam, 2 to 5 percent slopes	1.73	17.2%	**134	**44	**54	0.00	**99
13A	Bluford silt loam, 0 to 2 percent slopes	0.95	9.5%	136	44	55	3.39	101
W	Water	0.12	1.2%					
Weighted Average				94.4	31.3	38.4	1.08	70.5

Table: Optimum Crop Productivity Ratings for Illinois Soil by K.R. Olson and J.M. Lang, Office of Research, ACES, University of Illinois at Champaign-Urbana. Version: 1/2/2012 Amended Table S2 B811

Crop yields and productivity indices for optimum management (B811) are maintained at the following NRES web site: <http://soilproductivity.nres.illinois.edu/>

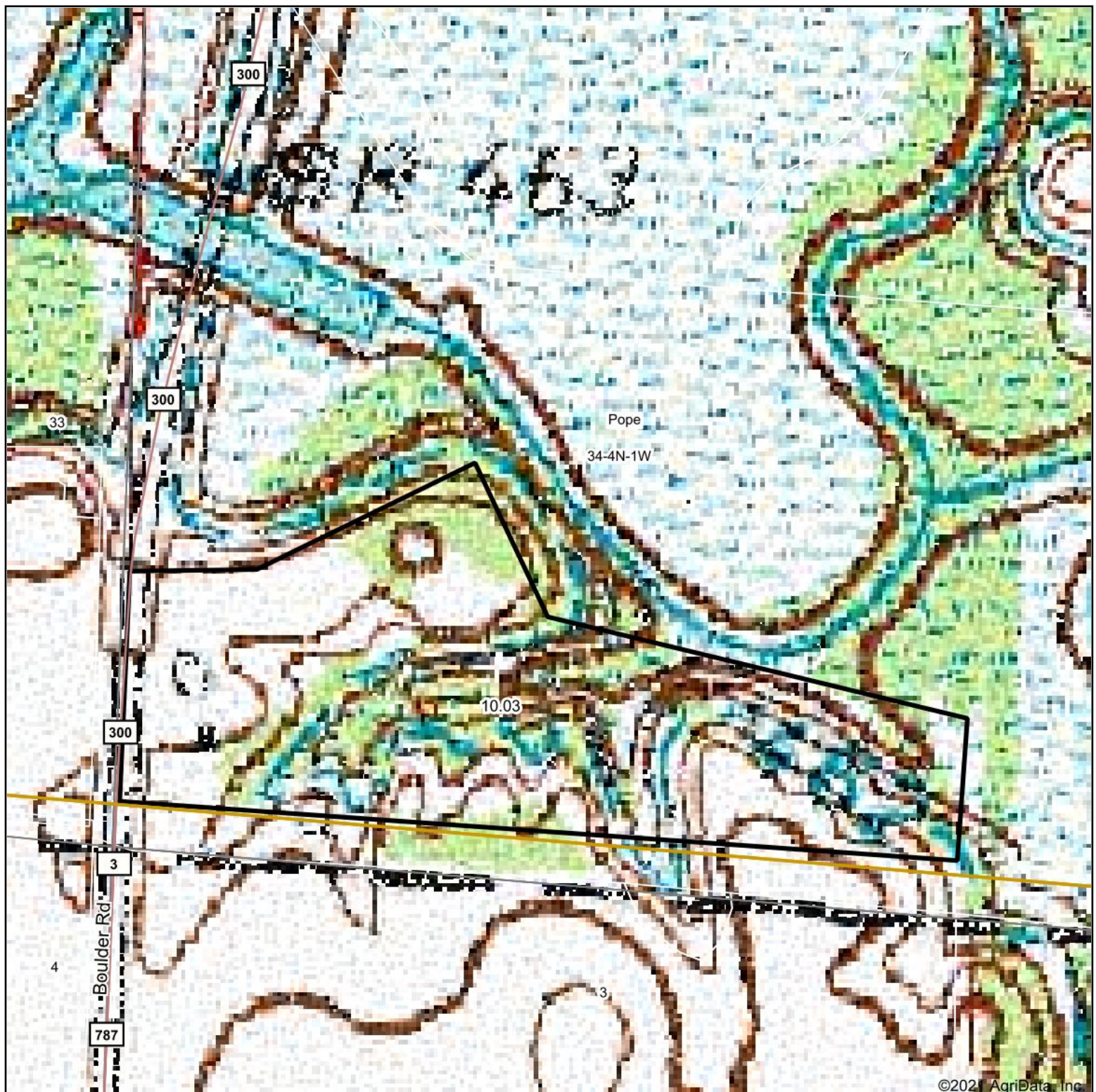
** Indexes adjusted for slope and erosion according to Bulletin 811 Table S3

e Soils in the well drained group were not rated for grass-legume and are shown with a zero "0".

*c: Using Capabilities Class Dominant Condition Aggregation Method

Soils data provided by USDA and NRCS. Soils data provided by University of Illinois at Champaign-Urbana.

Topography Map



map center: 38° 44' 25.08, -89° 11' 30.9

0ft 234ft 468ft



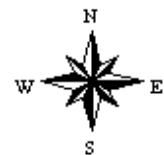
Maps Provided By:



© AgriData, Inc. 2021

www.AgriDataInc.com

34-4N-1W
Fayette County
Illinois



1/14/2021

Field borders provided by Farm Service Agency as of 5/21/2008.