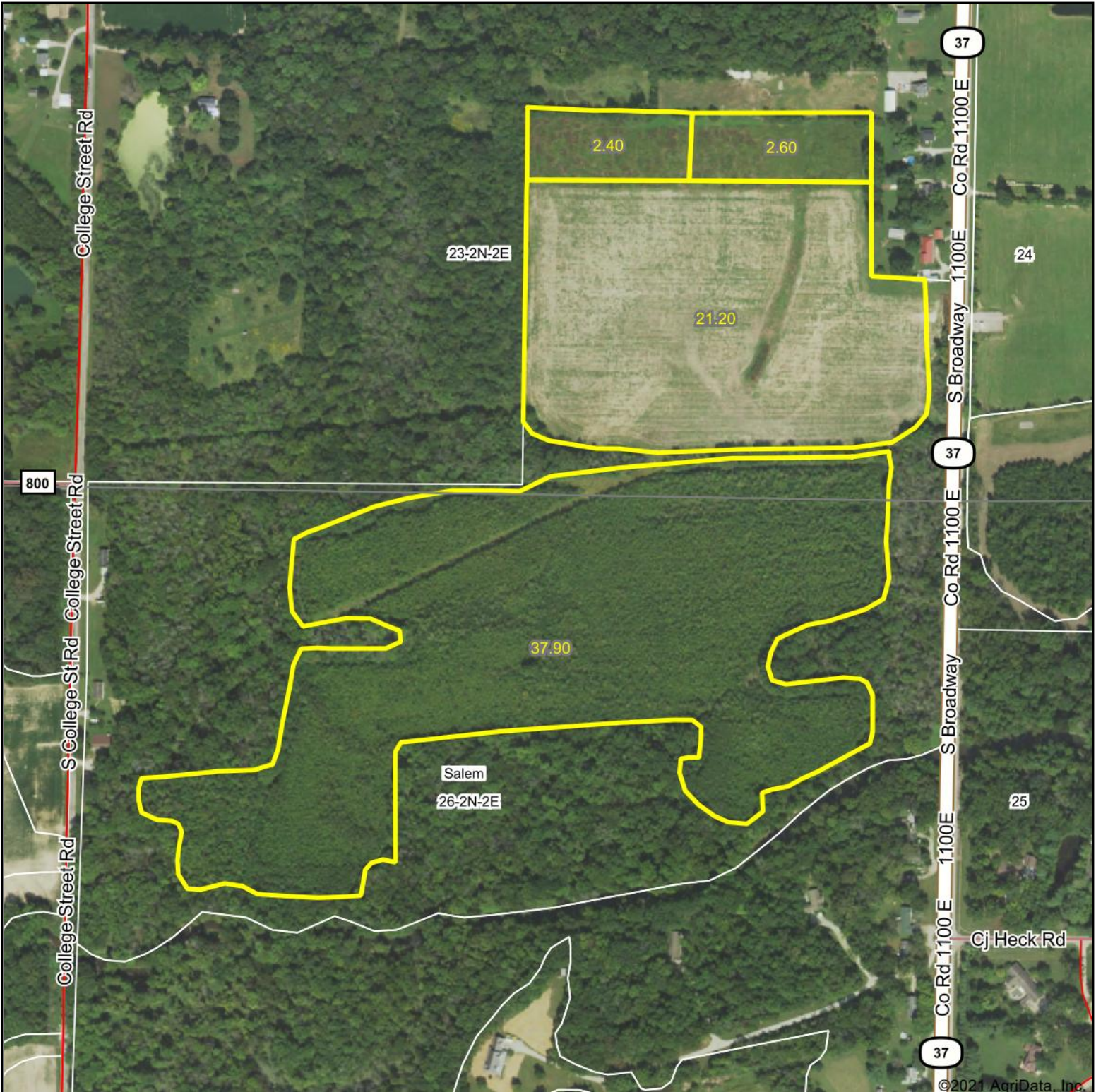


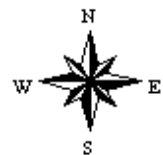
Aerial Map



Map Center: 38° 35' 26.83, -88° 56' 39.94



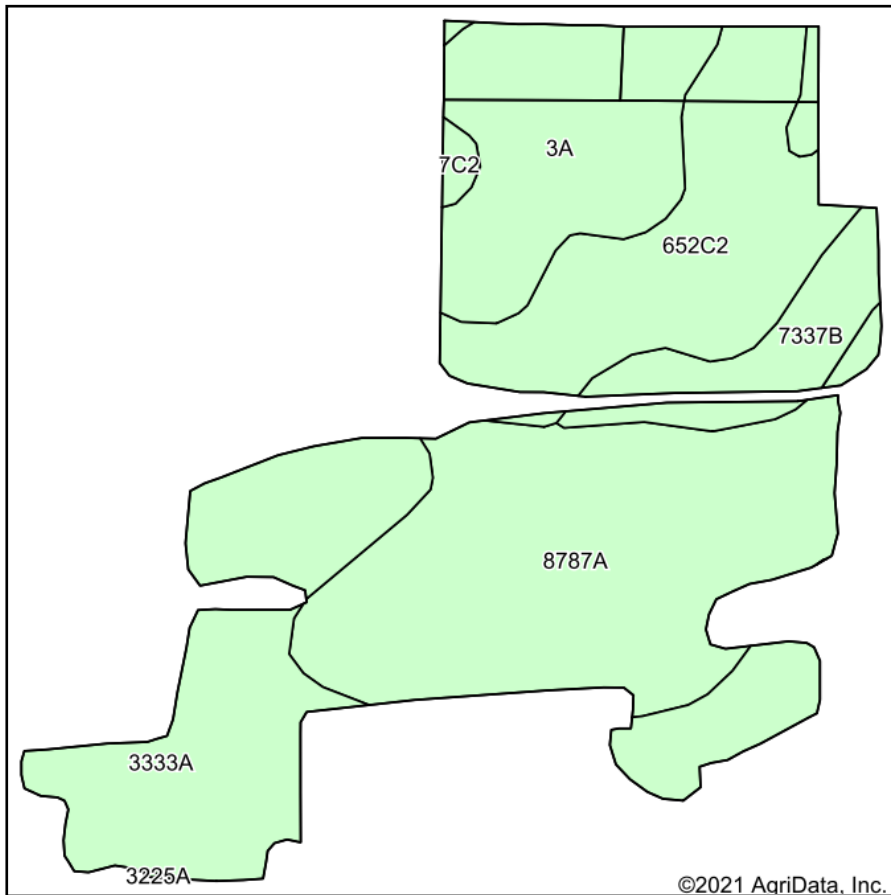
26-2N-2E
Marion County
Illinois



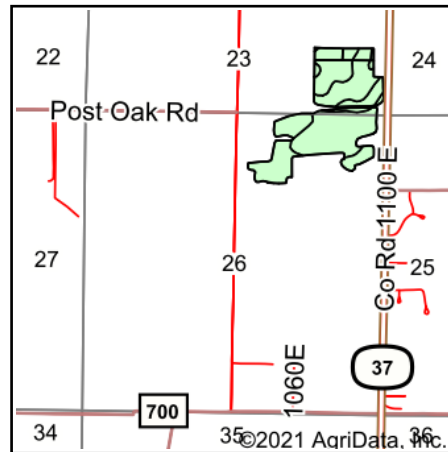
Maps Provided By:
 **surety**
CUSTOMIZED ONLINE MAPPING
© AgriData, Inc. 2021 www.AgriDataInc.com

1/16/2021

Soils Map



Soils data provided by USDA and NRCS.



State: **Illinois**
 County: **Marion**
 Location: **26-2N-2E**
 Township: **Salem**
 Acres: **64.1**
 Date: **1/16/2021**



Code	Soil Description	Acres	Percent of field	Corn Bu/A	Soybeans Bu/A	Wheat Bu/A	Grass-legume e hay, T/A	Crop productivity index for optimum management
8787A	Banlic silt loam, 0 to 2 percent slopes, occasionally flooded	21.04	32.8%	142	47	56	4.64	106
3333A	Wakeland silt loam, 0 to 2 percent slopes, frequently flooded	16.25	25.4%	174	56	68	5.14	128
**652C2	Passport silt loam, 5 to 10 percent slopes, eroded	11.57	18.0%	**116	**39	**51	**3.85	**88
3A	Hoyleton silt loam, 0 to 2 percent slopes	10.60	16.5%	146	46	58	4.64	108
7337B	Creal silt loam, 2 to 5 percent slopes, rarely flooded	4.16	6.5%	151	47	59	0.00	110
**7C2	Atlas silt loam, 5 to 10 percent slopes, eroded	0.48	0.7%	**105	**37	**41	**3.16	**81
Weighted Average				146.4	47.6	58.6	4.31	108.7

Table: Optimum Crop Productivity Ratings for Illinois Soil by K.R. Olson and J.M. Lang, Office of Research, ACES, University of Illinois at Champaign-Urbana. Version: 1/2/2012 Amended Table S2 B811

Crop yields and productivity indices for optimum management (B811) are maintained at the following NRES web site: <http://soilproductivity.nres.illinois.edu/>

** Indexes adjusted for slope and erosion according to Bulletin 811 Table S3

e Soils in the well drained group were not rated for grass-legume and are shown with a zero "0".

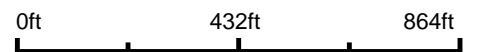
*c: Using Capabilities Class Dominant Condition Aggregation Method

Soils data provided by USDA and NRCS. Soils data provided by University of Illinois at Champaign-Urbana.

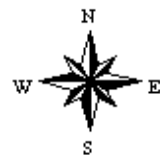
Topography Map



map center: 38° 35' 27.78, -88° 56' 39.49



26-2N-2E
Marion County
Illinois



1/16/2021



Maps Provided By:



© AgriData, Inc. 2021 www.AgriDataInc.com