

S-19-T38N-R33W



All Measurements are
For FSA Programs Only
Wetland Determination Identifiers

- Restricted Use
- ▼ Limited Restrictions
- Exempt from Conservation Compliance Provisions

Disclaimer: Wetland identifiers do not represent the size, shape or specific determination of the area. Refer to your original determination (CPA-026 and attached maps) for exact wetland boundaries and determinations, or contact NRCS.

Vernon Co. FSA

wht=wheat-SRW-Gr
corn=Corn-Yel-Gr
soy=Soybeans-Common-Gr
milo=Sorghum-GRS-Gr
gz=Mixfg-LGM-Gz
hay=Mixfg-LGM-Fg
LS=Mixfg-LGM-LS
all fields are NI
*Unless notated on Map

1 inch equals 513 feet

Program Year: 2021

Created: 12/2/2020

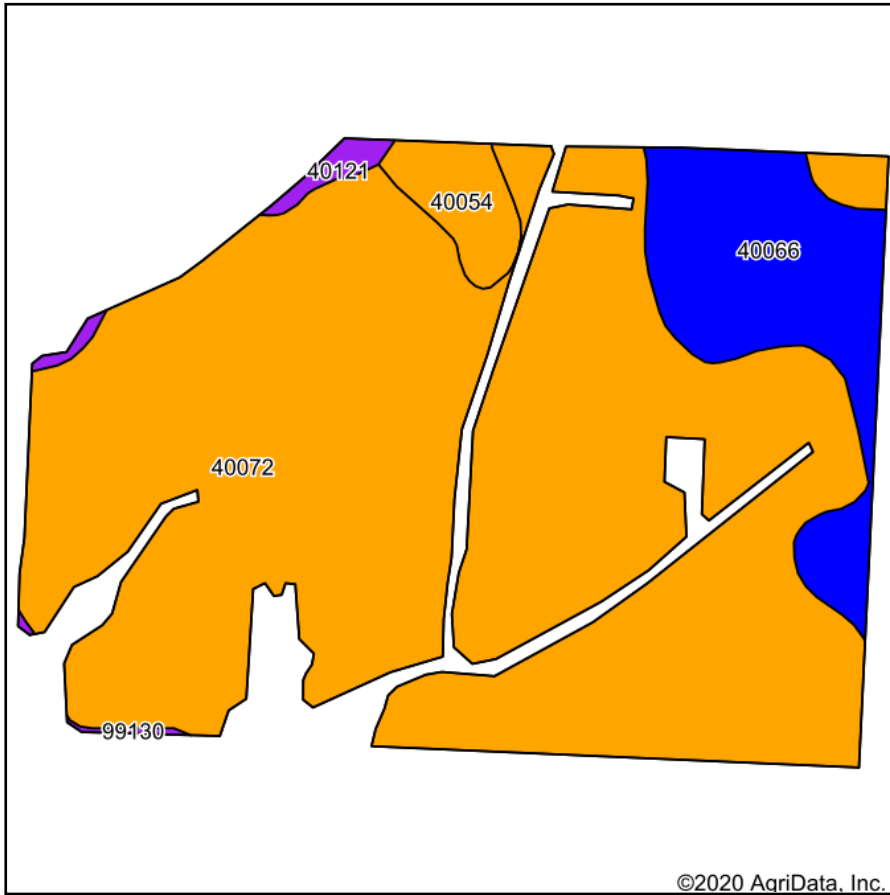
Flown: 2018-08-28

- clu
- crp
- plss

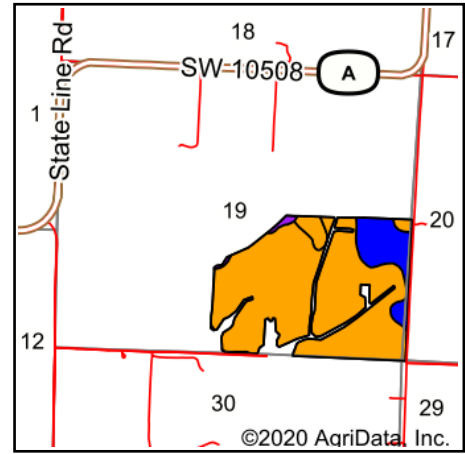
**Farm 8091
Tract 1**



Soils Map



Soils data provided by USDA and NRCS.



State: **Missouri**
 County: **Bates**
 Location: **19-38N-33W**
 Township: **Howard**
 Acres: **180.98**
 Date: **12/28/2020**



Maps Provided By:



© AgriData, Inc. 2020

www.AgriDataInc.com



Code	Soil Description	Acres	Percent of field	Non-Irr Class Legend	Non-Irr Class *c	Range Production (lbs/acre/yr)	*n NCCPI Overall	*n NCCPI Corn	*n NCCPI Small Grains	*n NCCPI Soybeans	*n NCCPI Cotton
40072	Kenoma silt loam, 1 to 3 percent slopes	151.84	83.9%		Ille	3888	59	56	56	59	54
40066	Hartwell silt loam, 0 to 1 percent slopes	22.05	12.2%		Ilw	0	75	75	59	63	58
40054	Deepwater silt loam, 2 to 5 percent slopes, eroded	5.04	2.8%		Ille	0	79	79	68	72	73
40121	Hepler silt loam, 0 to 3 percent slopes, frequently flooded	1.73	1.0%		Vw	7500	73	73	54	65	19
99130	Kanima silty clay loam, 15 to 50 percent slopes	0.32	0.2%		Vlls	0	25	25	17	17	21
Weighted Average						3333.7	*n 61.6	*n 59.1	*n 56.6	*n 59.8	*n 54.6

*n: The aggregation method is "Weighted Average using all components"

*c: Using Capabilities Class Dominant Condition Aggregation Method

Soils data provided by USDA and NRCS.