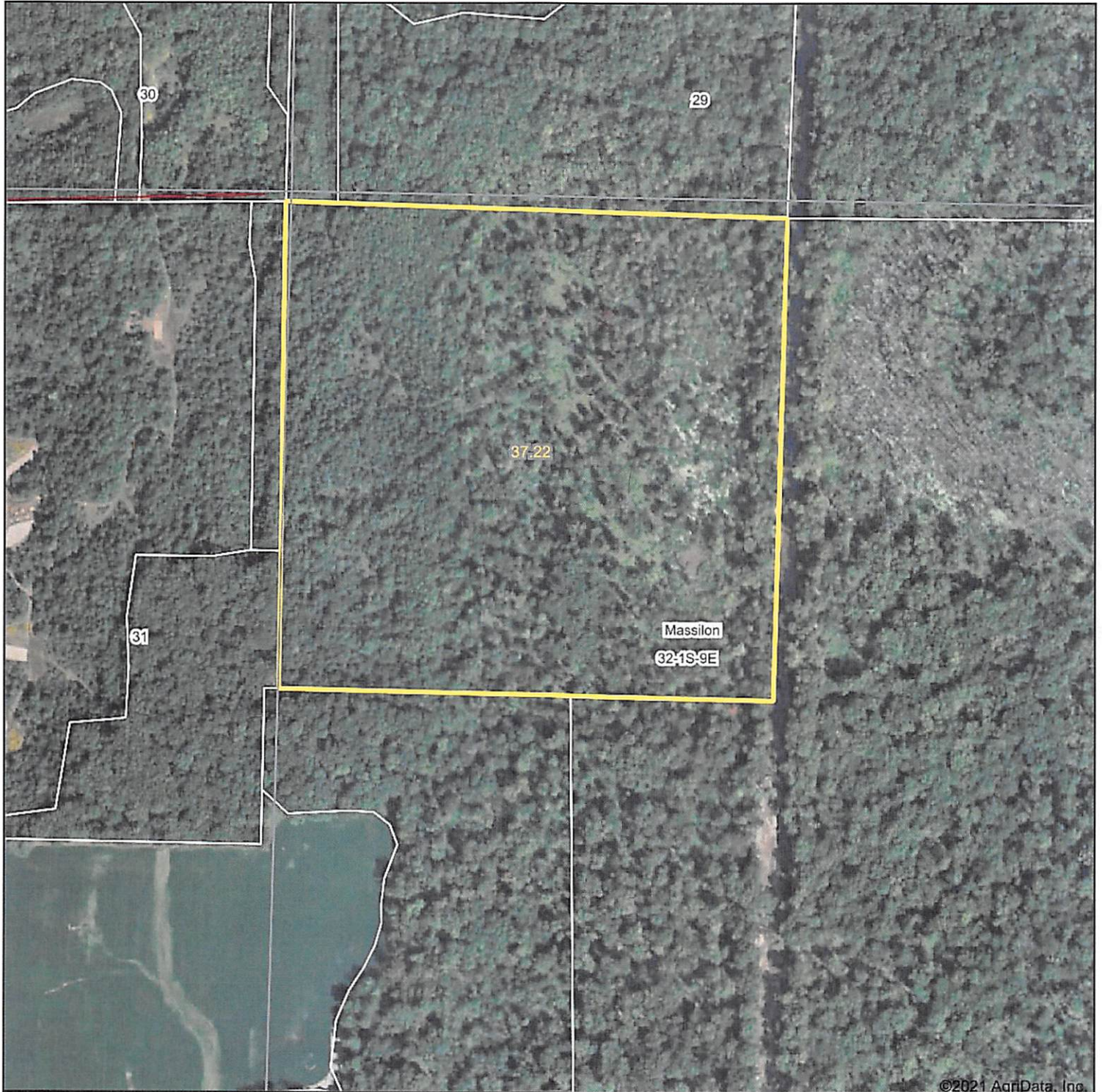


Aerial Map



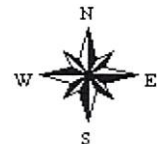
©2021 AgriData, Inc.

Map Center: 38° 23' 54.09, -88° 14' 14.33



© AgriData, Inc. 2021 www.AgriDataInc.com

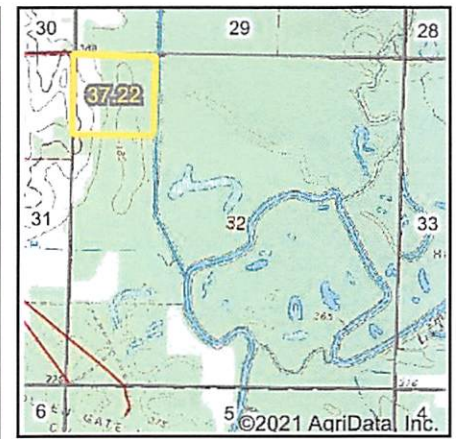
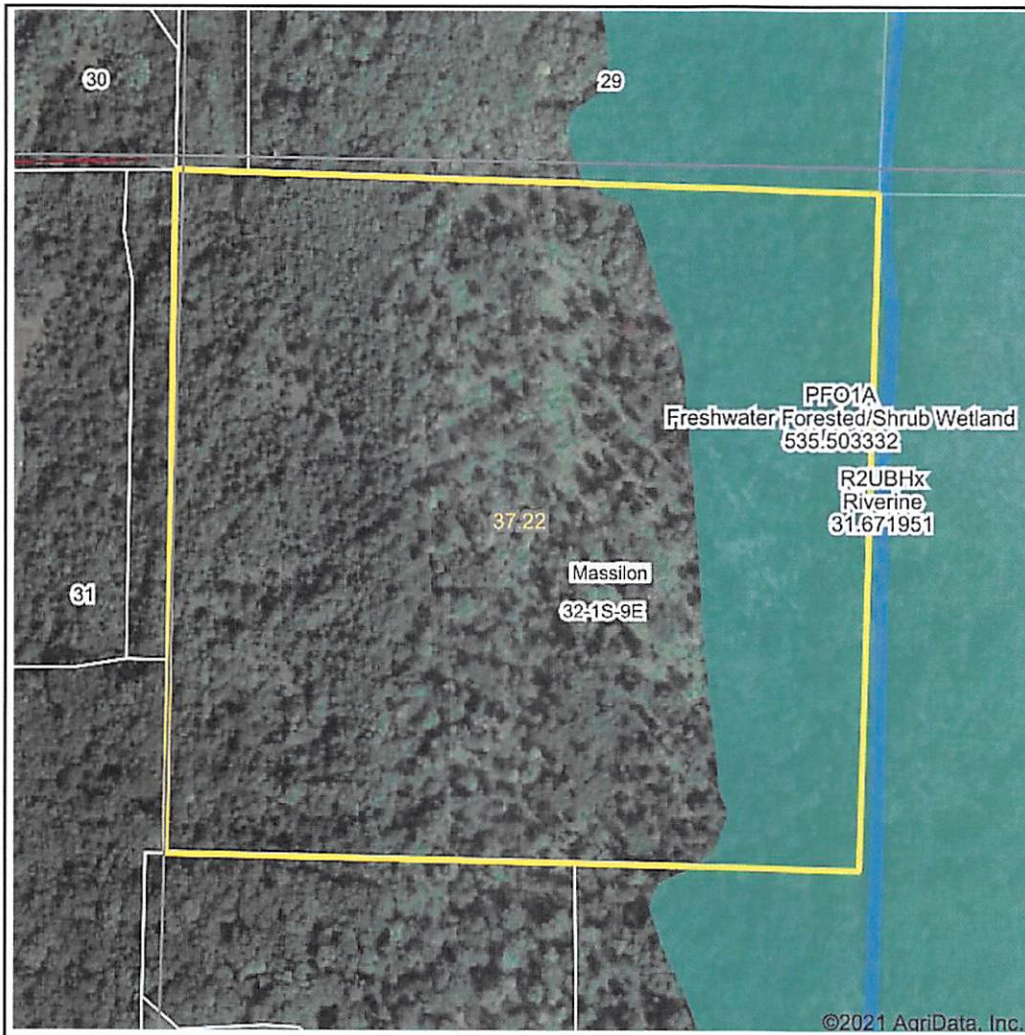
32-1S-9E
Wayne County
Illinois



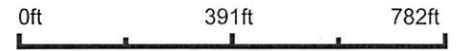
1/19/2021

Field borders provided by Farm Service Agency as of 5/21/2008.

Wetlands Map



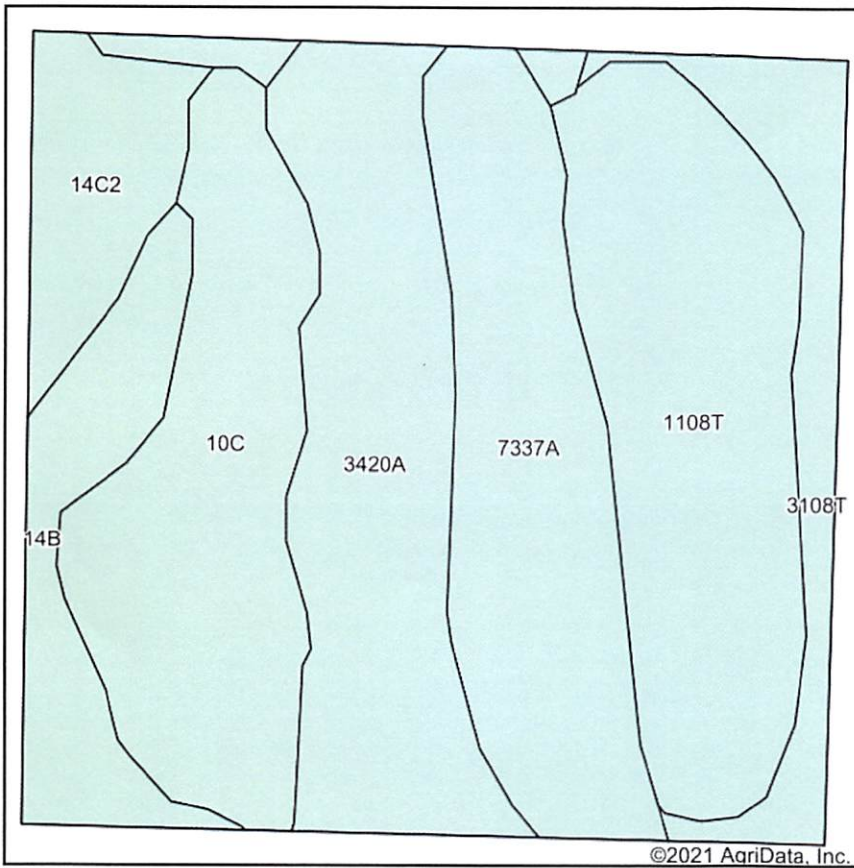
State: **Illinois**
 Location: **32-1S-9E**
 County: **Wayne**
 Township: **Massilon**
 Date: **1/19/2021**



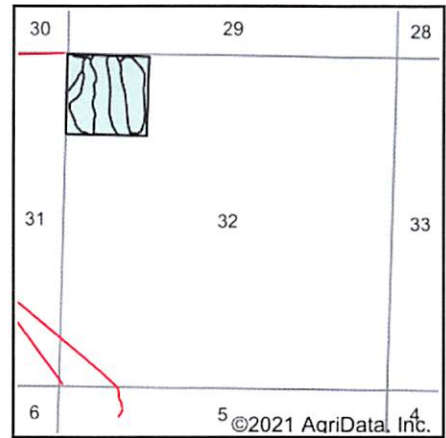
Classification Code	Type	Acres
PFO1A	Freshwater Forested/Shrub Wetland	5.45
PFO1C	Freshwater Forested/Shrub Wetland	4.06
R2UBHx	Riverine	0.00
Total Acres		9.51

Data Source: National Wetlands Inventory website. U.S. Dol, Fish and Wildlife Service, Washington, D.C. <http://www.fws.gov/wetlands/>

Soils Map



Soils data provided by USDA and NRCS.



State: **Illinois**
 County: **Wayne**
 Location: **32-1S-9E**
 Township: **Massilon**
 Acres: **37.22**
 Date: **1/19/2021**



Code	Soil Description	Acres	Percent of field	Corn Bu/A	Soybeans Bu/A	Wheat Bu/A	Grass-legume e hay, T/A	Crop productivity index for optimum management
1108T	Bonnie silt loam, sodic, undrained, 0 to 2 percent slopes, frequently flooded	7.97	21.4%	149	49	59	4.64	111
3420A	Piopolis silty clay loam, 0 to 2 percent slopes, frequently flooded	7.35	19.7%	142	48	59	4.39	108
**10C	Plumfield silty clay loam, 5 to 10 percent slopes	6.84	18.4%	**103	**34	**39	**3.37	**78
7337A	Creal silt loam, 0 to 2 percent slopes, rarely flooded	6.75	18.1%	151	47	59	0.00	110
3108T	Bonnie silt loam, sodic, 0 to 2 percent slopes, frequently flooded	3.01	8.1%	149	49	59	4.64	111
**14B	Ava silt loam, 2 to 5 percent slopes	2.95	7.9%	**134	**44	**54	0.00	**99
**14C2	Ava silt loam, 5 to 10 percent slopes, eroded	2.35	6.3%	**122	**40	**50	0.00	**90
Weighted Average				136.6	44.7	54.4	2.86	101.9

Table: Optimum Crop Productivity Ratings for Illinois Soil by K.R. Olson and J.M. Lang, Office of Research, ACES, University of Illinois at Champaign-Urbana. Version: 1/2/2012 Amended Table S2 B811

Crop yields and productivity indices for optimum management (B811) are maintained at the following NRES web site: <http://soilproductivity.nres.illinois.edu/>

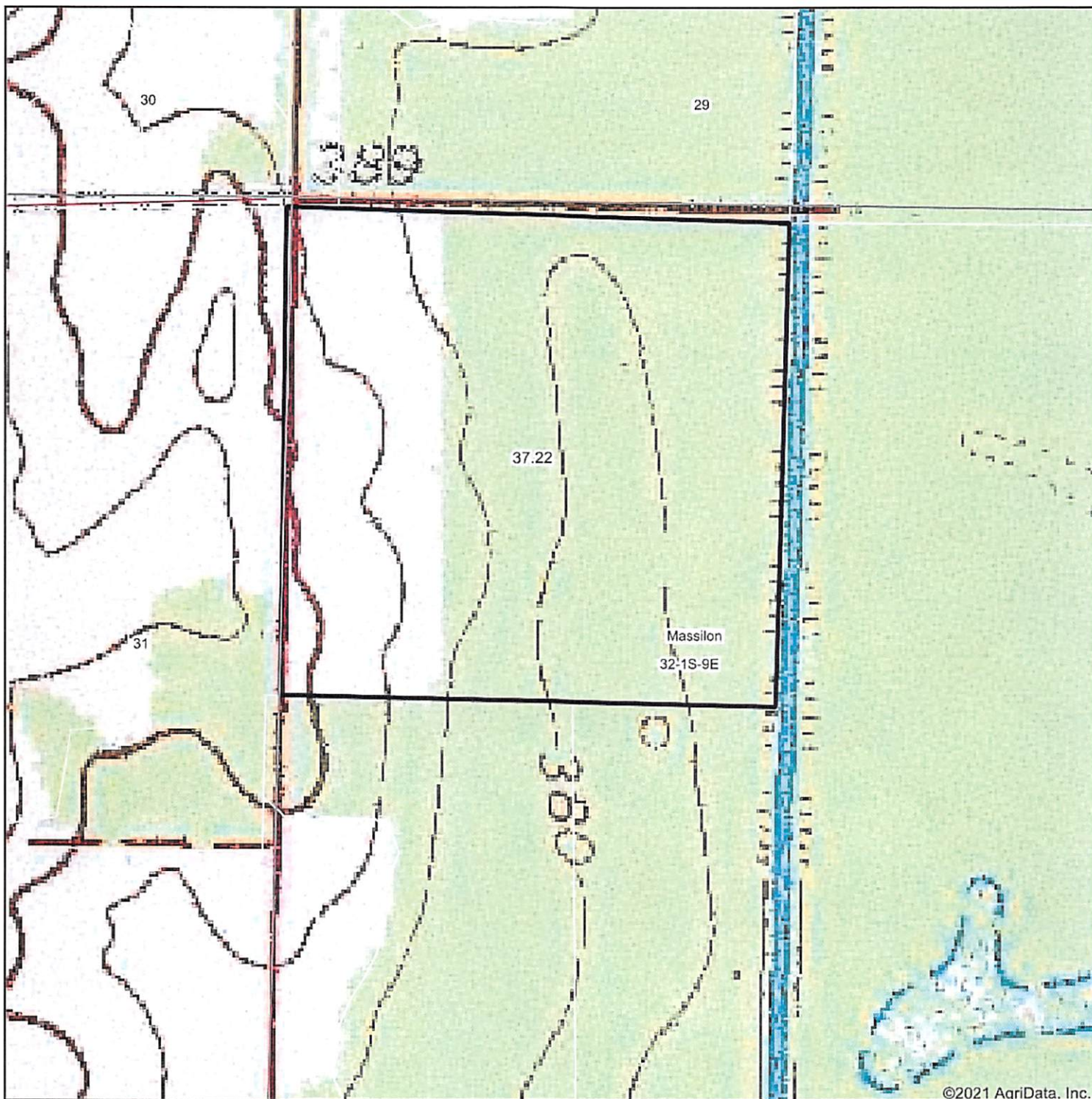
** Indexes adjusted for slope and erosion according to Bulletin 811 Table S3

e Soils in the well drained group were not rated for grass-legume and are shown with a zero "0".

*c: Using Capabilities Class Dominant Condition Aggregation Method

Soils data provided by USDA and NRCS. Soils data provided by University of Illinois at Champaign-Urbana.

Topography Map



map center: 38° 23' 54.09, -88° 14' 14.33



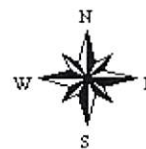
Maps Provided By



© AgriData, Inc. 2021

www.AgrIDataInc.com

32-1S-9E
Wayne County
Illinois



1/19/2021