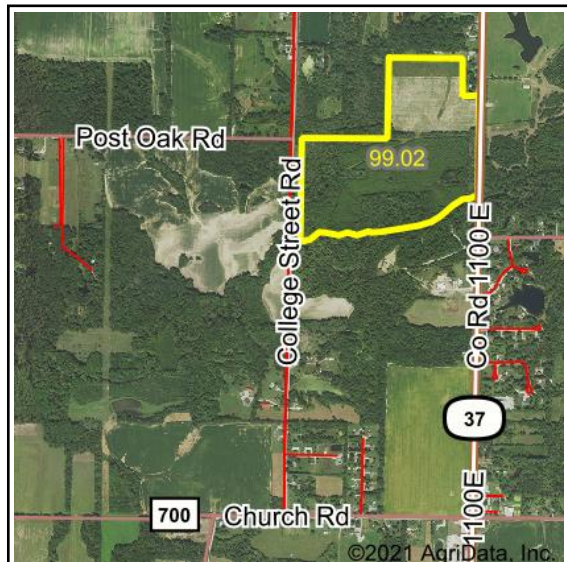
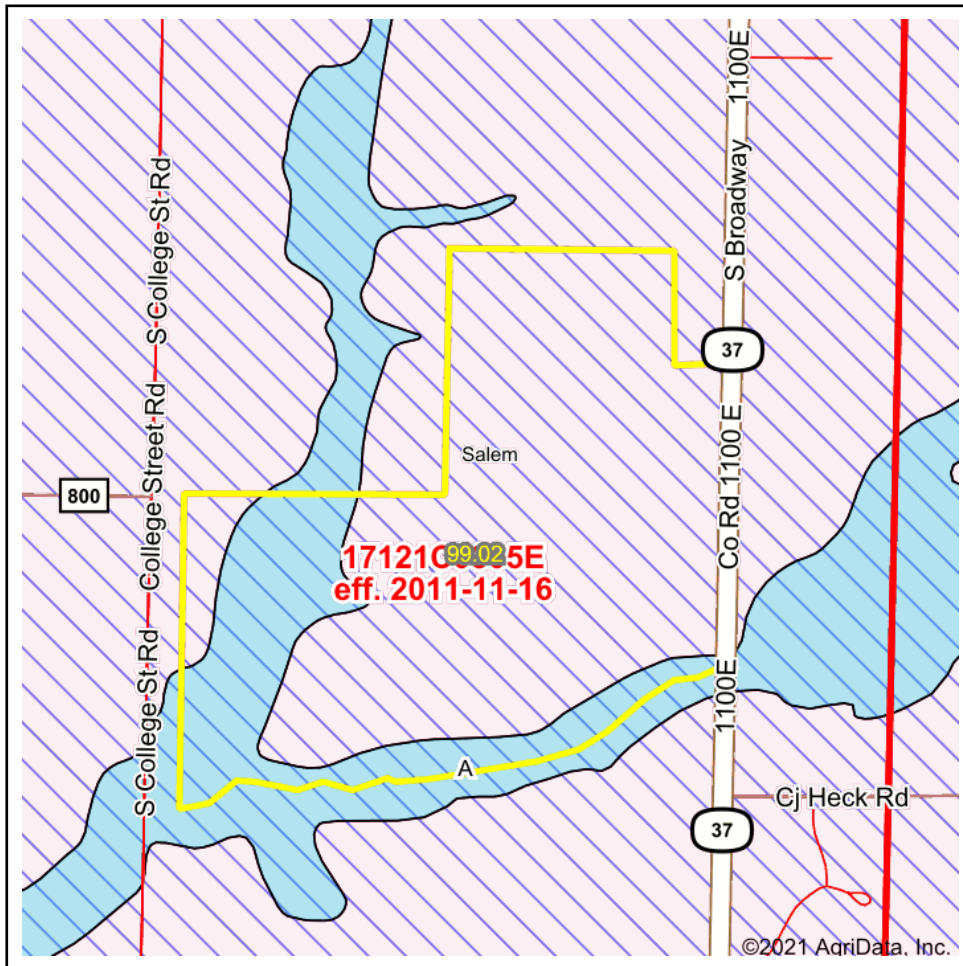


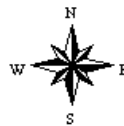
# FEMA Report



State: IL      Acres: 99.02  
 County: Marion      Date: 1/16/2021  
 Location: 23-2N-2E  
 Township: Salem



© AgriData, Inc. 2021      www.AgriDataInc.com



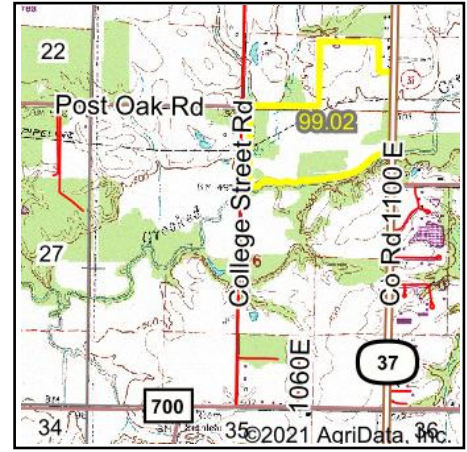
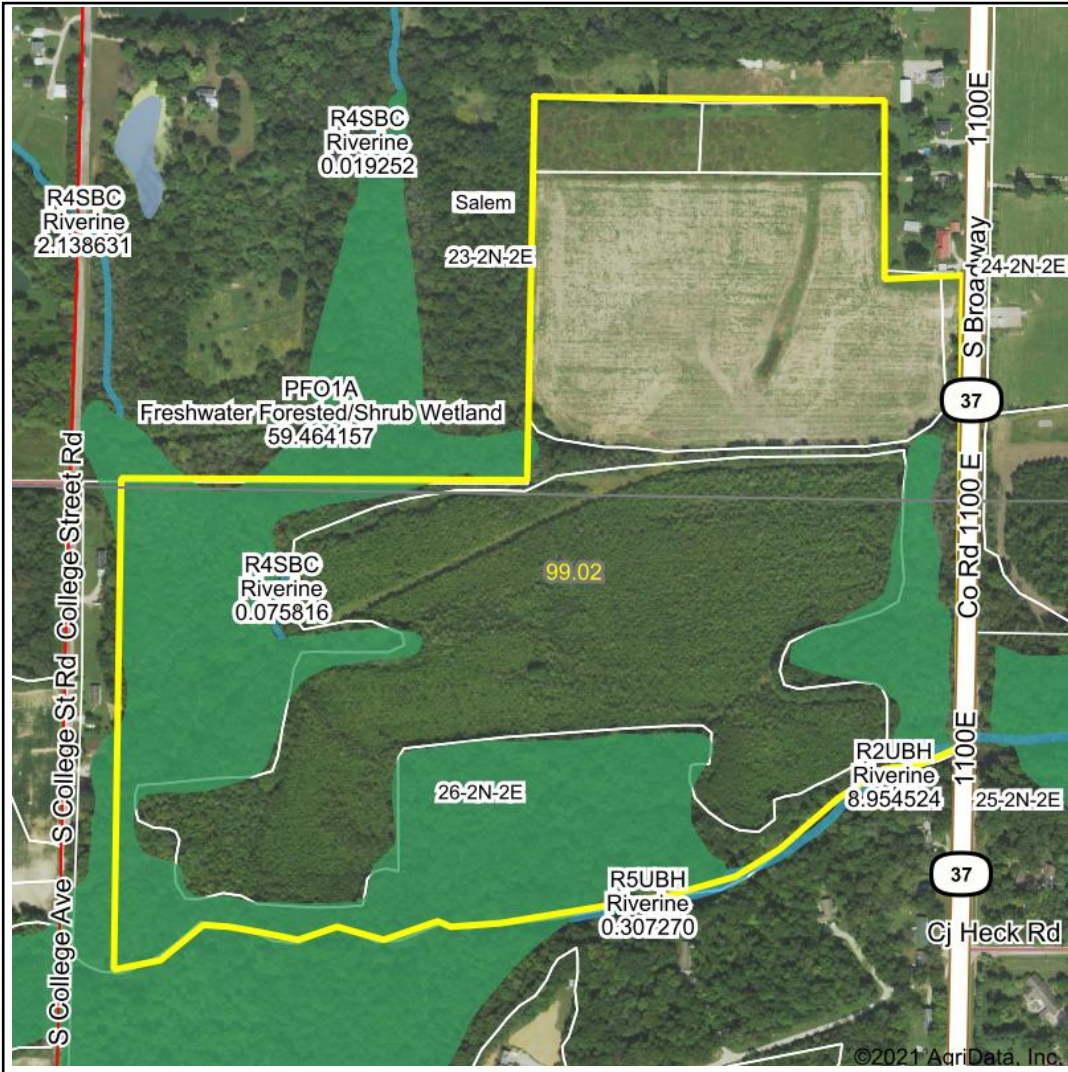
Name	Number	County	NFIP Participation	Acres	Percent
Marion County	170932	Marion	None	99.02	100%
<b>Total</b>				99.02	100%

Map Change	Date	Case No.	Acres	Percent
No			0	0%

Zone	SubType	Description	Acres	Percent
X	AREA OF MINIMAL FLOOD HAZARD	Outside 500-year Floodplain	77.31	78.1%
A		100-year Floodplain	21.71	21.9%
<b>Total</b>			99.02	100%

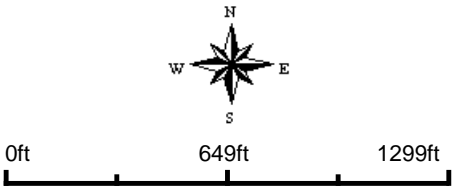
Panel	Effective Date	Acres	Percent
17121C0305E	11/16/2011	99.02	100%
<b>Total</b>		99.02	100%

# Wetlands Map



**State:** Illinois  
**Location:** 23-2N-2E  
**County:** Marion  
**Township:** Salem  
**Date:** 1/16/2021

  
 Maps Provided By:  
  
 © AgriData, Inc. 2021 www.AgriDataInc.com



Classification Code	Type	Acres
PFO1A	Freshwater Forested/Shrub Wetland	29.16
R2UBH	Riverine	0.14
R4SBC	Riverine	0.10
R5UBH	Riverine	0.01
Total Acres		29.41

Data Source: National Wetlands Inventory website. U.S. DoI, Fish and Wildlife Service, Washington, D.C. <http://www.fws.gov/wetlands/>