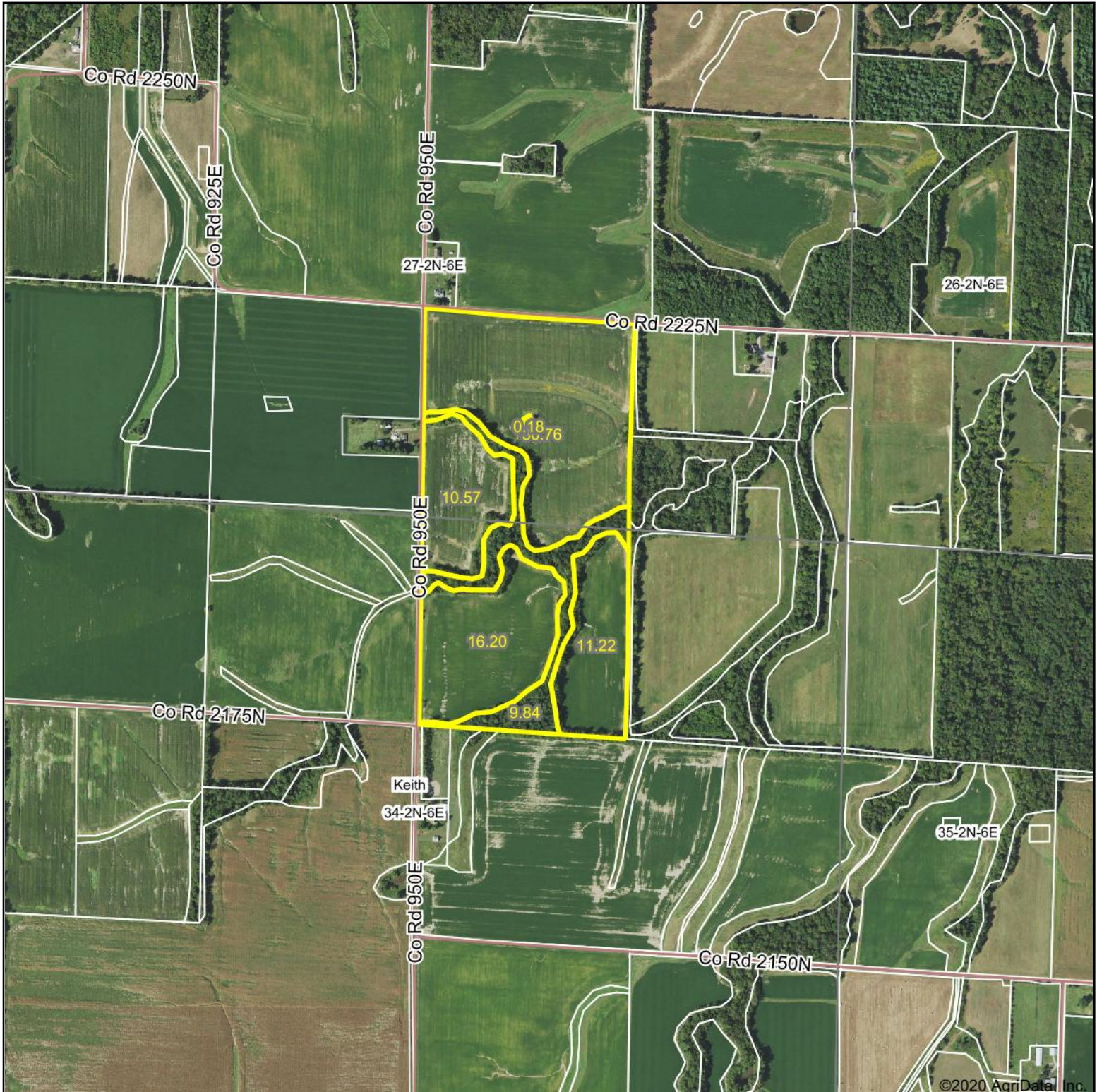


Aerial Map



Brett Berger, ARA

Map Center: 38.575832, -88.514751

0ft 983ft 1966ft

34-2N-6E
Wayne County
Illinois



12/2/2020

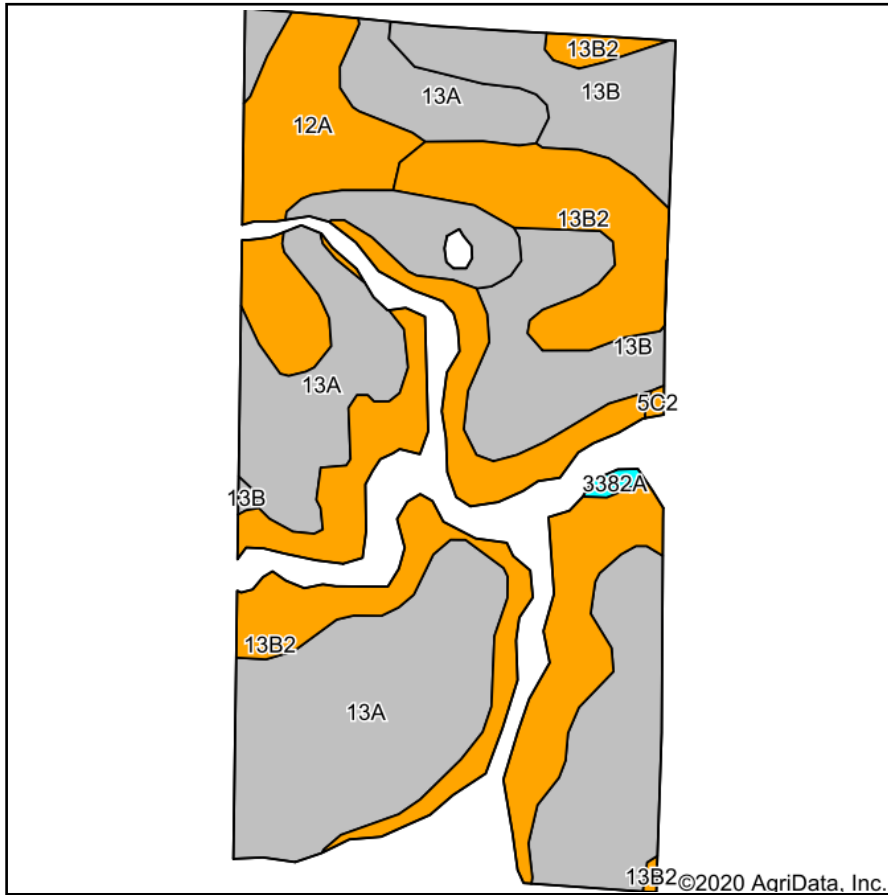
Maps Provided By:



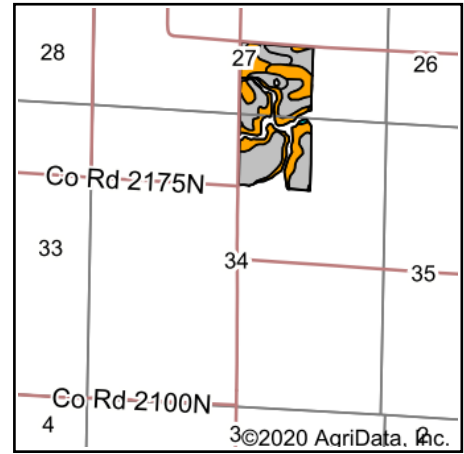
© AgriData, Inc. 2020 www.AgriDataInc.com

Field borders provided by Farm Service Agency as of 5/21/2008.

Soils Map



Soils data provided by USDA and NRCS.



State: **Illinois**
 County: **Wayne**
 Location: **34-2N-6E**
 Township: **Keith**
 Acres: **68.75**
 Date: **12/2/2020**



Brett Berger, ARA

Maps Provided By:



Code	Soil Description	Acres	Percent of field	Il. State Productivity Index Legend	Corn Bu/A	Soybeans Bu/A	Wheat Bu/A	Crop productivity index for optimum management
13A	Bluford silt loam, 0 to 2 percent slopes	29.98	43.6%		136	44	55	101
**13B2	Bluford silt loam, 2 to 5 percent slopes, eroded	21.51	31.3%		**129	**42	**52	**96
**13B	Bluford silt loam, 2 to 5 percent slopes	10.25	14.9%		**135	**44	**54	**100
12A	Wynoose silt loam, 0 to 2 percent slopes	6.66	9.7%		128	42	51	97
3382A	Belknap silt loam, 0 to 2 percent slopes, frequently flooded	0.24	0.3%		156	52	63	117
**5C2	Blair silt loam, 5 to 10 percent slopes, eroded	0.11	0.2%		**124	**41	**50	**94
Weighted Average					132.9	43.2	53.5	98.9

Table: Optimum Crop Productivity Ratings for Illinois Soil by K.R. Olson and J.M. Lang, Office of Research, ACES, University of Illinois at Champaign-Urbana. Version: 1/2/2012 Amended Table S2 B811

Crop yields and productivity indices for optimum management (B811) are maintained at the following NRES web site: <http://soilproductivity.nres.illinois.edu/>

** Indexes adjusted for slope and erosion according to Bulletin 811 Table S3

*c: Using Capabilities Class Dominant Condition Aggregation Method

Soils data provided by USDA and NRCS. Soils data provided by University of Illinois at Champaign-Urbana.