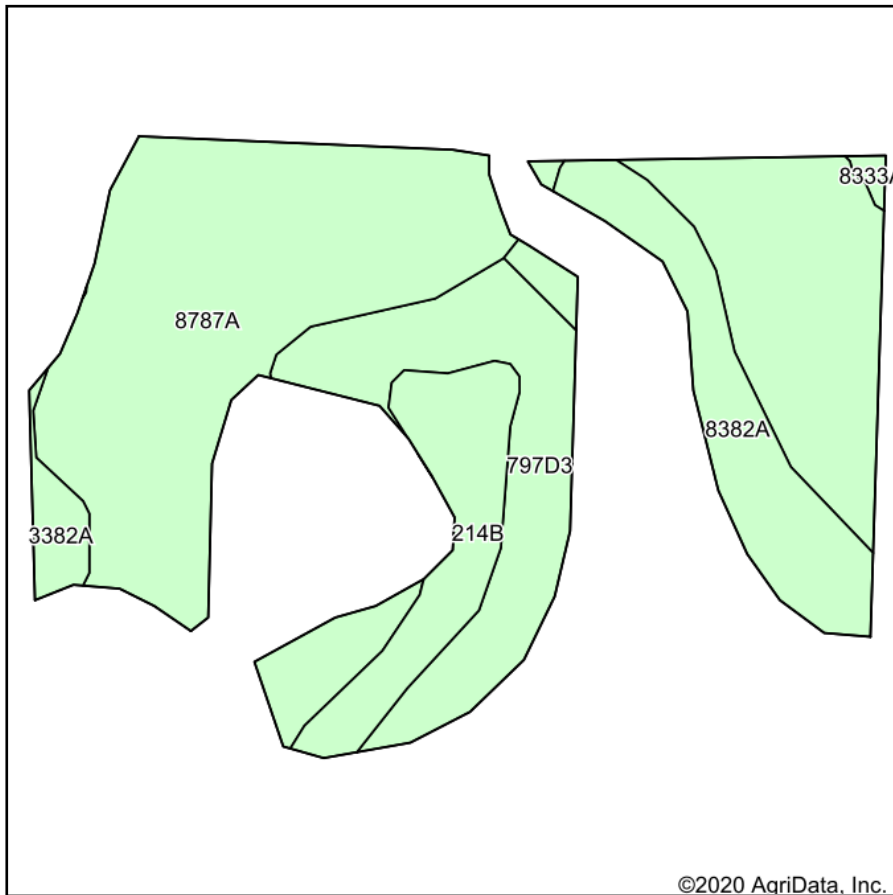
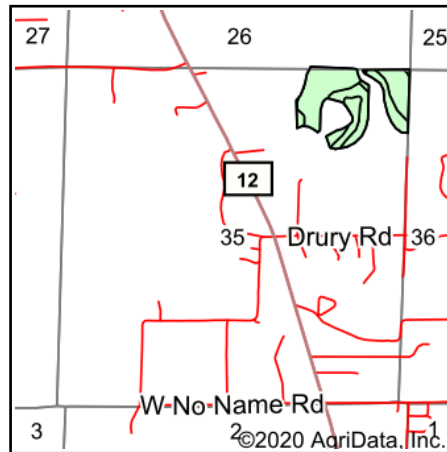


Soils Map



Soils data provided by USDA and NRCS.



State: **Illinois**
 County: **Jackson**
 Location: **35-9S-1W**
 Township: **Carbondale**
 Acres: **30.62**
 Date: **12/13/2020**



Maps Provided By:



© AgriData, Inc. 2020

www.AgriDataInc.com



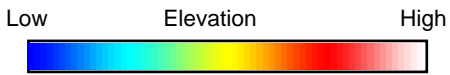
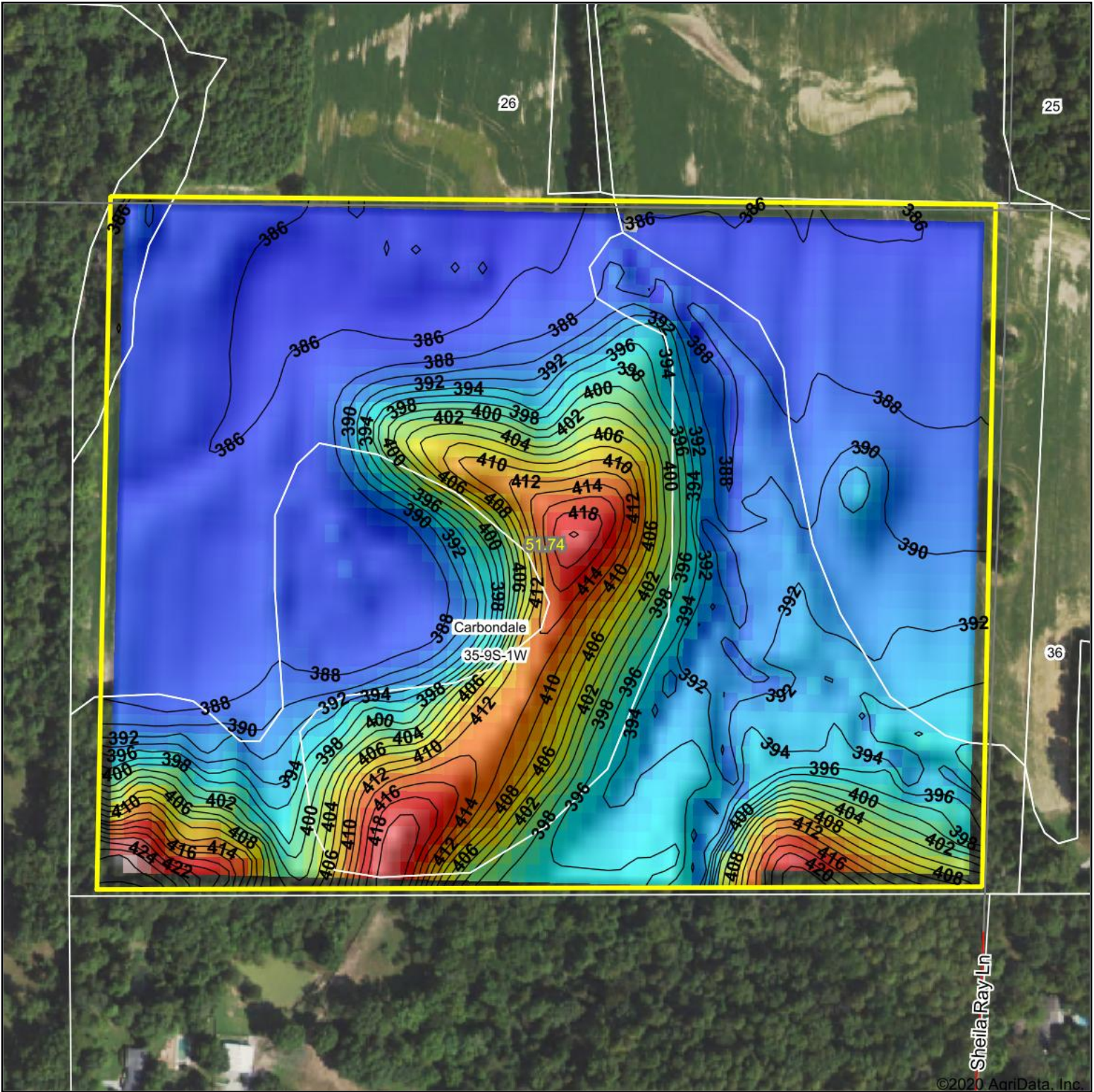
Code	Soil Description	Acres	Percent of field	Corn Bu/A	Soybeans Bu/A	Wheat Bu/A	Crop productivity index for optimum management
8787A	Banlic silt loam, 0 to 2 percent slopes, occasionally flooded	16.93	55.3%	142	47	56	106
**797D3	Hickory-Homen silty clay loams, 10 to 18 percent slopes, severely eroded	6.03	19.7%	**107	**36	**42	**80
8382A	Belknap silt loam, 0 to 2 percent slopes, occasionally flooded	3.92	12.8%	156	52	63	117
**214B	Hosmer silt loam, 2 to 5 percent slopes	2.95	9.6%	**139	**46	**57	**104
3382A	Belknap silt loam, 0 to 2 percent slopes, frequently flooded	0.67	2.2%	156	52	63	117
8333A	Wakeland silt loam, 0 to 2 percent slopes, occasionally flooded	0.12	0.4%	174	56	68	128
Weighted Average				137	45.5	54.4	102.4

Table: Optimum Crop Productivity Ratings for Illinois Soil by K.R. Olson and J.M. Lang, Office of Research, ACES, University of Illinois at Champaign-Urbana. Version: 1/2/2012 Amended Table S2 B811

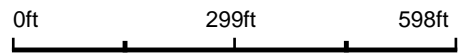
Crop yields and productivity indices for optimum management (B811) are maintained at the following NRES web site: <http://soilproductivity.nres.illinois.edu/>

** Indexes adjusted for slope and erosion according to Bulletin 811 Table S3

Soils data provided by USDA and NRCS. Soils data provided by University of Illinois at Champaign-Urbana.



Source: USGS 10 meter dem
 Interval(ft): 2
 Min: 385.1
 Max: 428.7
 Range: 43.6
 Average: 394.0
 Standard Deviation: 9.12 ft



12/13/2020

35-9S-1W
Jackson County
Illinois

map center: 37° 41' 53.02, -89° 10' 29.83



Maps Provided By:



© AgriData, Inc. 2020 www.AgriDataInc.com

Field borders provided by Farm Service Agency as of 5/21/2008.