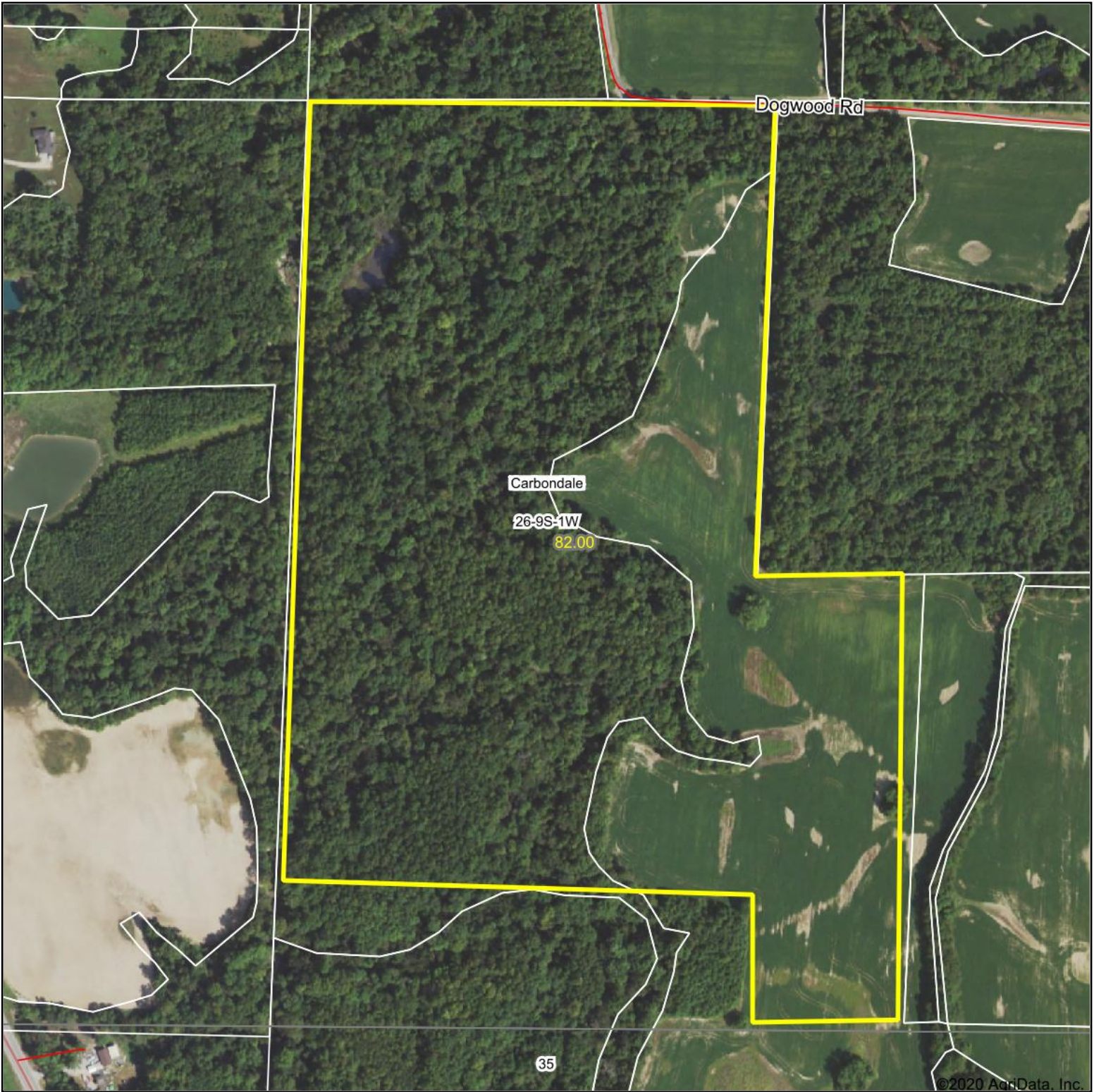
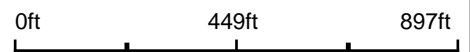


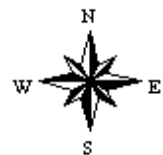
Aerial Map



Map Center: 37° 42' 17.27, -89° 10' 41.56



26-9S-1W
Jackson County
Illinois



12/13/2020



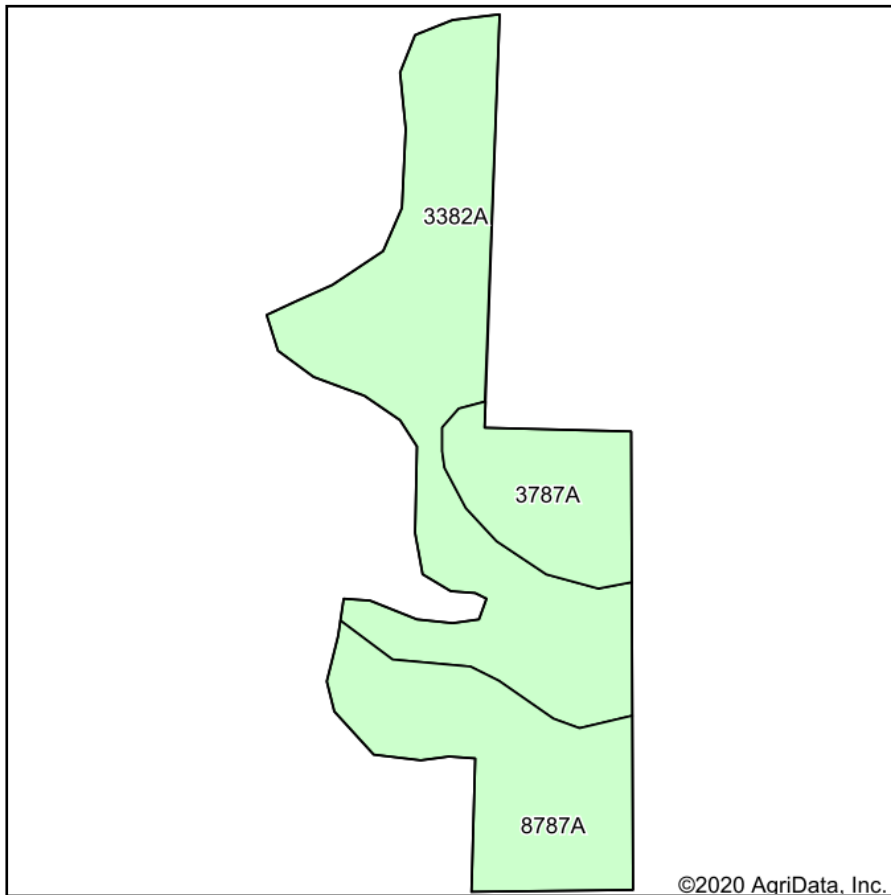
Maps Provided By:



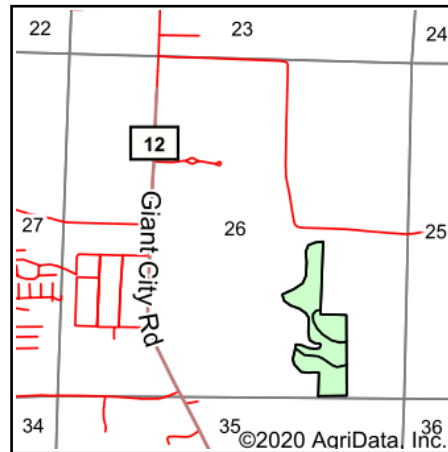
© AgriData, Inc. 2020 www.AgriDataInc.com

Field borders provided by Farm Service Agency as of 5/21/2008.

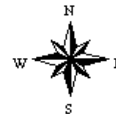
Soils Map



Soils data provided by USDA and NRCS.



State: **Illinois**
 County: **Jackson**
 Location: **26-9S-1W**
 Township: **Carbondale**
 Acres: **26.7**
 Date: **12/13/2020**



Code	Soil Description	Acres	Percent of field	Corn Bu/A	Soybeans Bu/A	Wheat Bu/A	Crop productivity index for optimum management
3382A	Belknap silt loam, 0 to 2 percent slopes, frequently flooded	14.78	55.4%	156	52	63	117
8787A	Banlic silt loam, 0 to 2 percent slopes, occasionally flooded	7.60	28.5%	142	47	56	106
3787A	Banlic silt loam, 0 to 2 percent slopes, frequently flooded	4.32	16.2%	142	47	56	106
Weighted Average				149.7	49.8	59.9	112.1

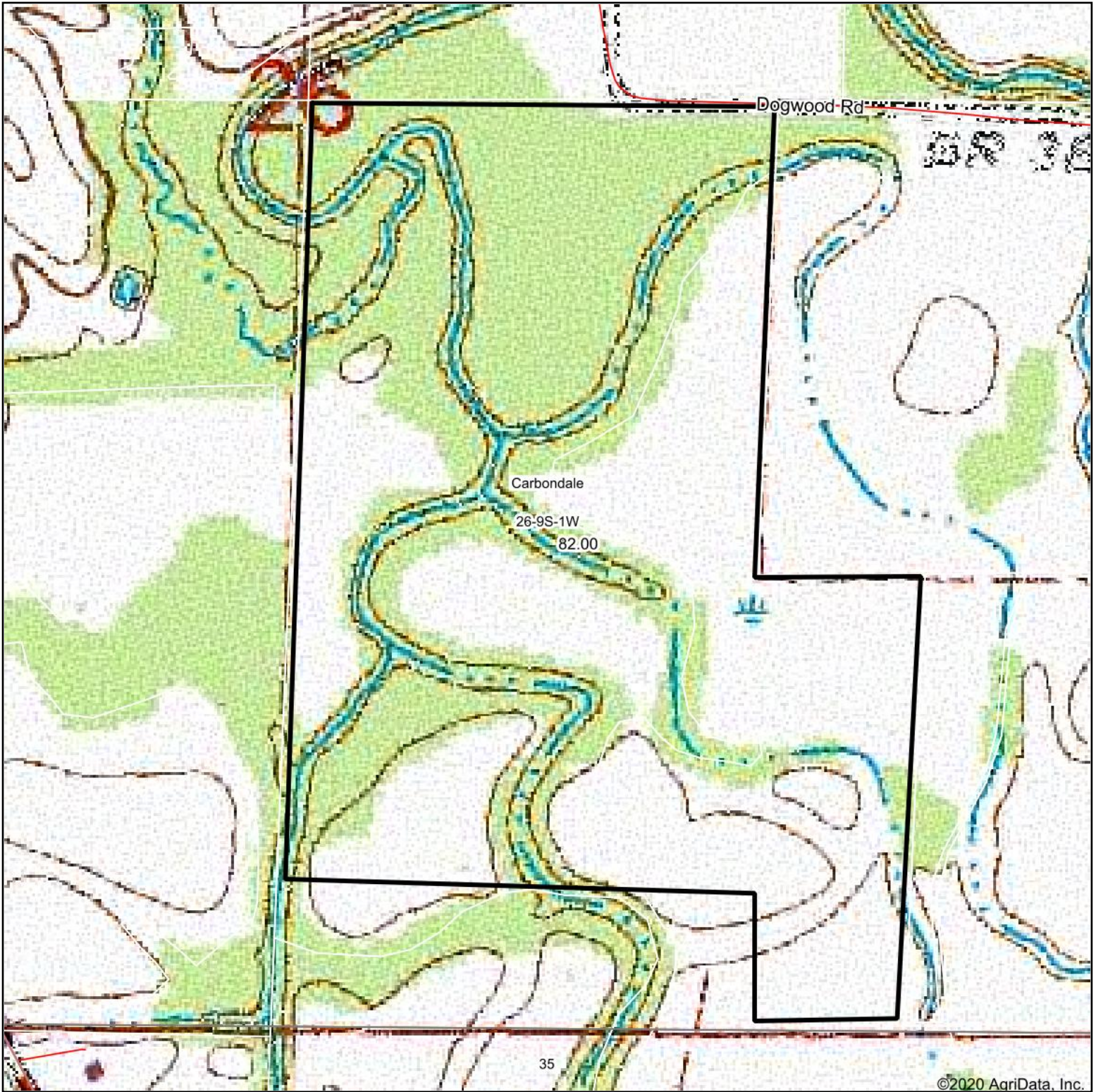
Table: Optimum Crop Productivity Ratings for Illinois Soil by K.R. Olson and J.M. Lang, Office of Research, ACES, University of Illinois at Champaign-Urbana. Version: 1/2/2012 Amended Table S2 B811

Crop yields and productivity indices for optimum management (B811) are maintained at the following NRES web site: <http://soilproductivity.nres.illinois.edu/>

** Indexes adjusted for slope and erosion according to Bulletin 811 Table S3

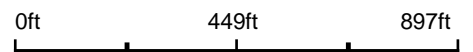
Soils data provided by USDA and NRCS. Soils data provided by University of Illinois at Champaign-Urbana.

Topography Map

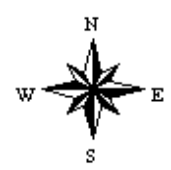


©2020 AgriData, Inc.

map center: 37° 42' 17.27, -89° 10' 41.56



26-9S-1W
Jackson County
Illinois



Maps Provided By:
surety
CUSTOMIZED ONLINE MAPPING
© AgriData, Inc. 2020 www.AgrIDataInc.com

12/13/2020

Field borders provided by Farm Service Agency as of 5/21/2008.