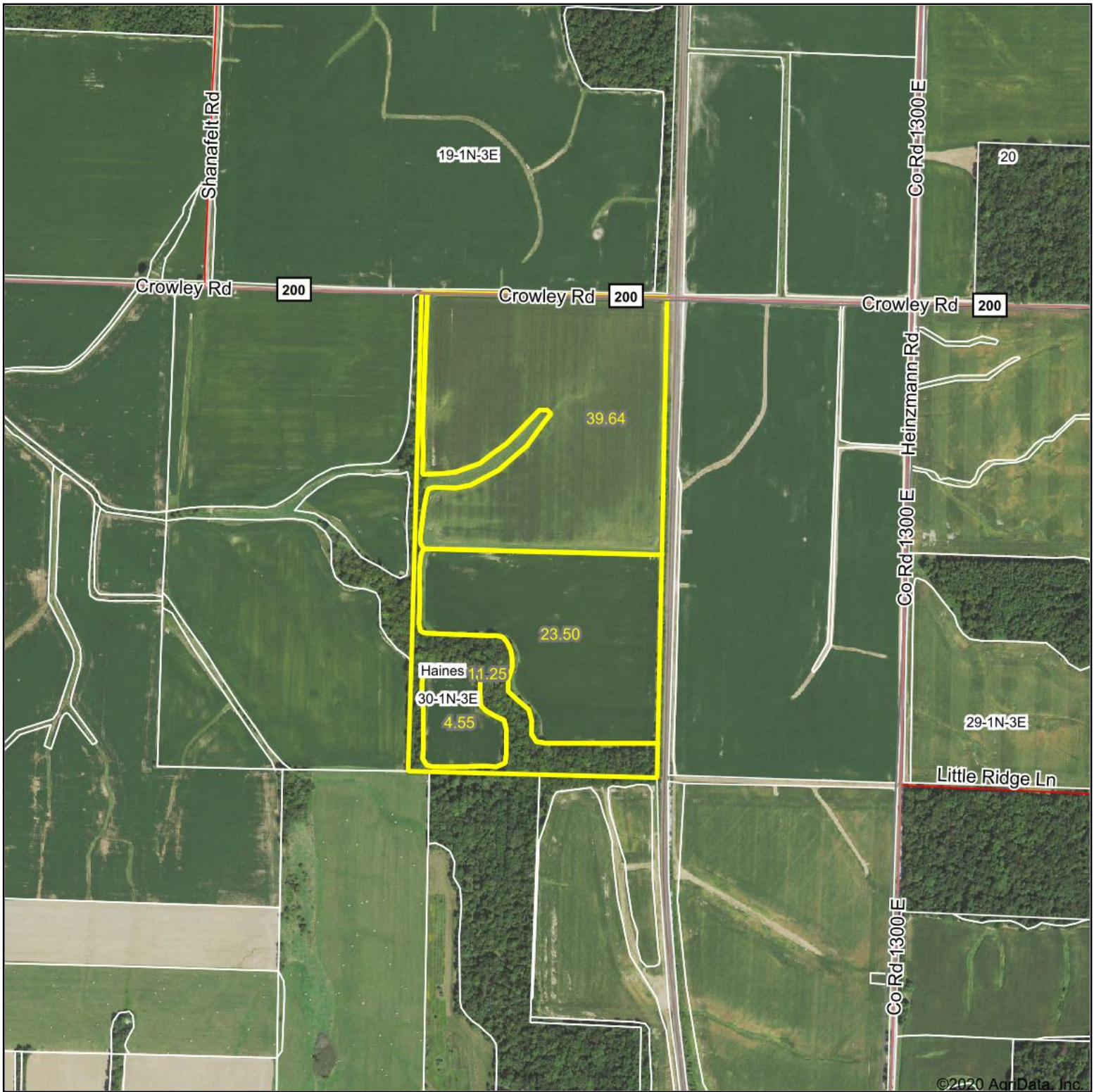
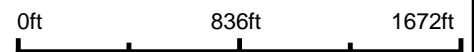


Aerial Map



©2020 AgriData, Inc.

Map Center: 38° 30' 7.24, -88° 54' 36.57



30-1N-3E
Marion County
Illinois

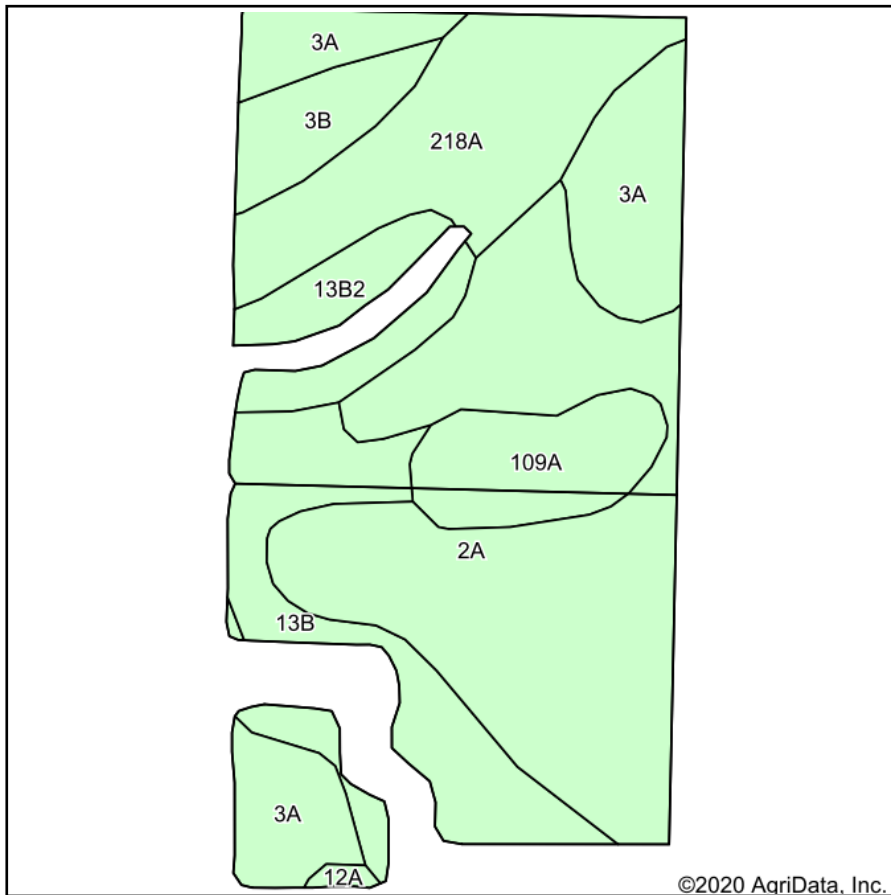


Maps Provided By:
surety
CUSTOMIZED ONLINE MAPPING
© AgriData, Inc. 2020 www.AgriDataInc.com

12/21/2020

Field borders provided by Farm Service Agency as of 5/21/2008.

Soils Map



Soils data provided by USDA and NRCS.



State: **Illinois**
 County: **Marion**
 Location: **30-1N-3E**
 Township: **Haines**
 Acres: **67.69**
 Date: **11/5/2020**



Area Symbol: IL121, Soil Area Version: 17									
Code	Soil Description	Acres	Percent of field	Il. State Productivity Index Legend	Corn Bu/A	Soybeans Bu/A	Wheat Bu/A	Grass-legume e hay, T/A	Crop productivity index for optimum management
2A	Cisne silt loam, 0 to 2 percent slopes	24.00	35.5%		149	46	59	4.64	109
218A	Newberry silt loam, 0 to 2 percent slopes	10.83	16.0%		155	48	60	4.77	114
3A	Hoyleton silt loam, 0 to 2 percent slopes	10.23	15.1%		146	46	58	4.64	108
**13B	Bluford silt loam, 2 to 5 percent slopes	9.71	14.3%		**135	**44	**54	**3.36	**100
109A	Racoon silt loam, 0 to 2 percent slopes	5.10	7.5%		144	46	56	0.00	106
**13B2	Bluford silt loam, 2 to 5 percent slopes, eroded	4.42	6.5%		**129	**42	**52	**3.22	**96
**3B	Hoyleton silt loam, 2 to 5 percent slopes	3.14	4.6%		**145	**46	**57	**4.59	**107
12A	Wynoose silt loam, 0 to 2 percent slopes	0.26	0.4%		128	42	51	4.26	97
Weighted Average					145.5	45.8	57.5	4.03	107.1

Table: Optimum Crop Productivity Ratings for Illinois Soil by K.R. Olson and J.M. Lang, Office of Research, ACES, University of Illinois at Champaign-Urbana. Version: 1/2/2012 Amended Table S2 B811

Crop yields and productivity indices for optimum management (B811) are maintained at the following NRES web site: <http://soilproductivity.nres.illinois.edu/>

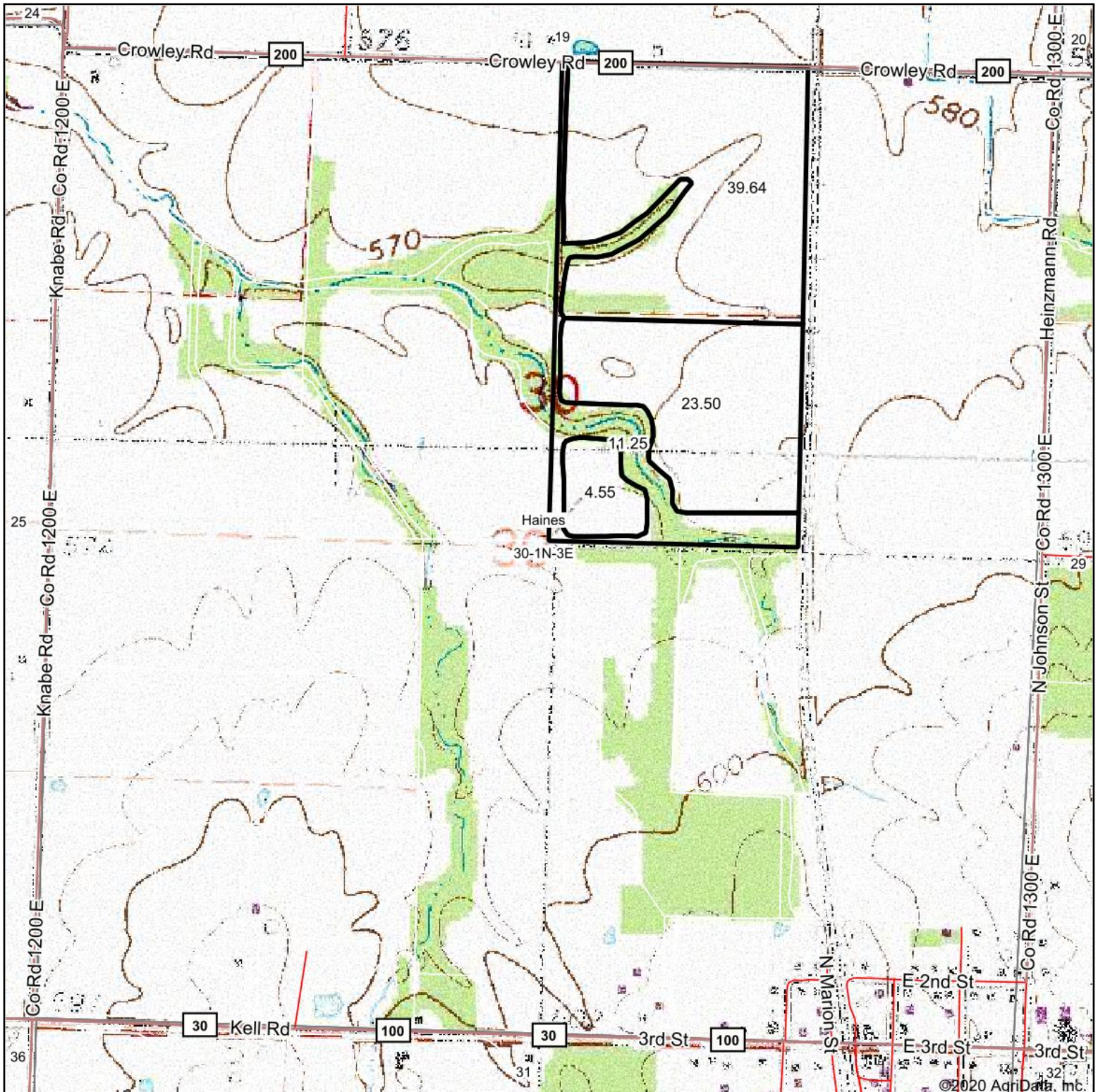
** Indexes adjusted for slope and erosion according to Bulletin 811 Table S3

e Soils in the well drained group were not rated for grass-legume and are shown with a zero "0".

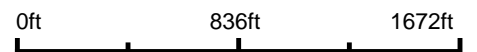
*c: Using Capabilities Class Dominant Condition Aggregation Method

Soils data provided by USDA and NRCS. Soils data provided by University of Illinois at Champaign-Urbana.

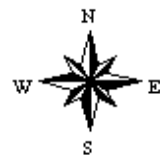
Topography Map



map center: 38° 29' 54.8, -88° 54' 45.65



30-1N-3E
Marion County
Illinois



11/5/2020



Maps Provided By:



© AgriData, Inc. 2020 www.AgridataInc.com