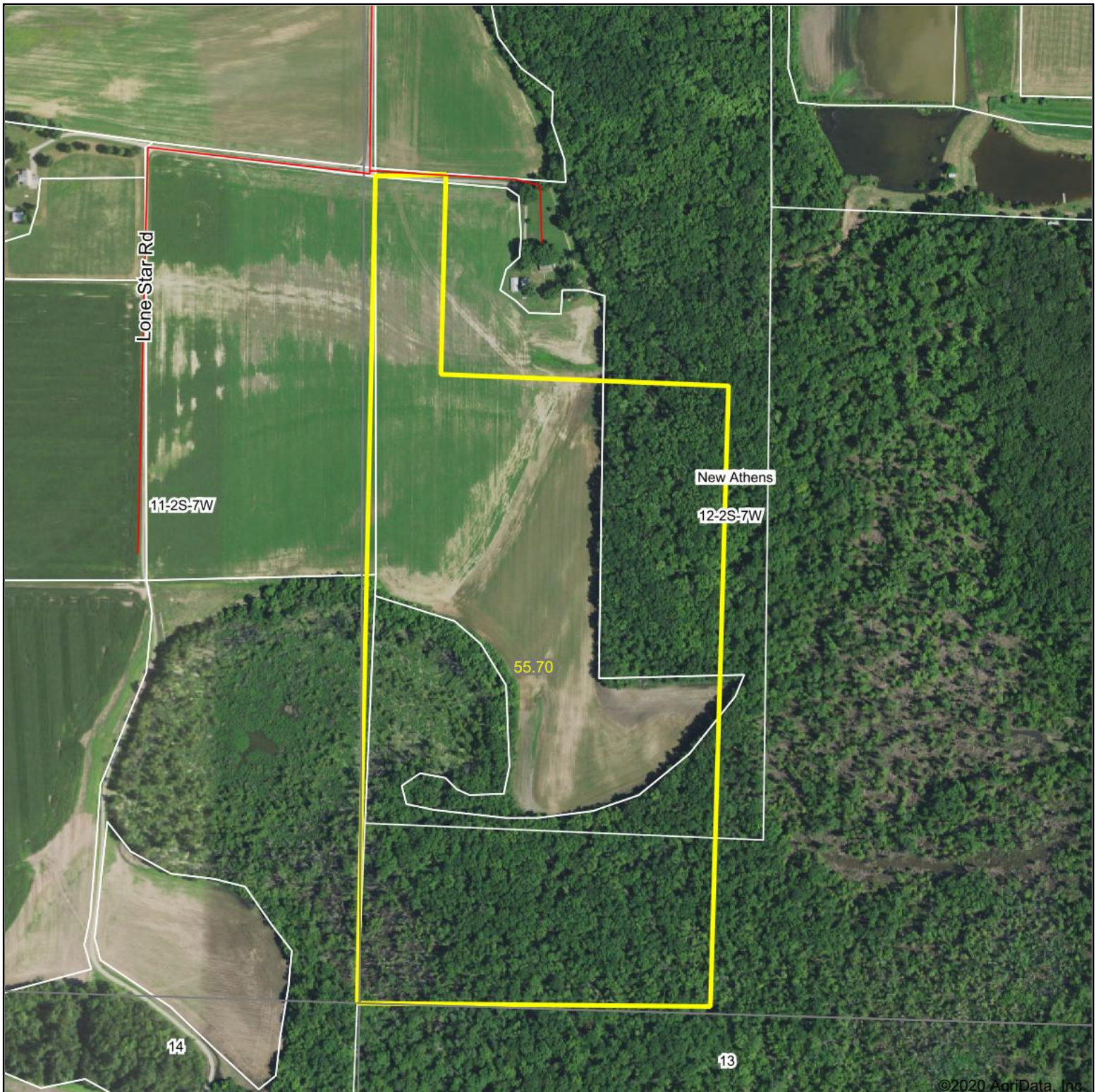
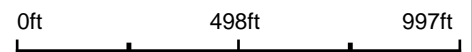


Aerial Map

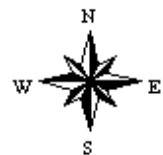


©2020 AgriData, Inc.

Map Center: 38° 22' 10.44, -89° 49' 57.39



12-2S-7W
St Clair County
Illinois



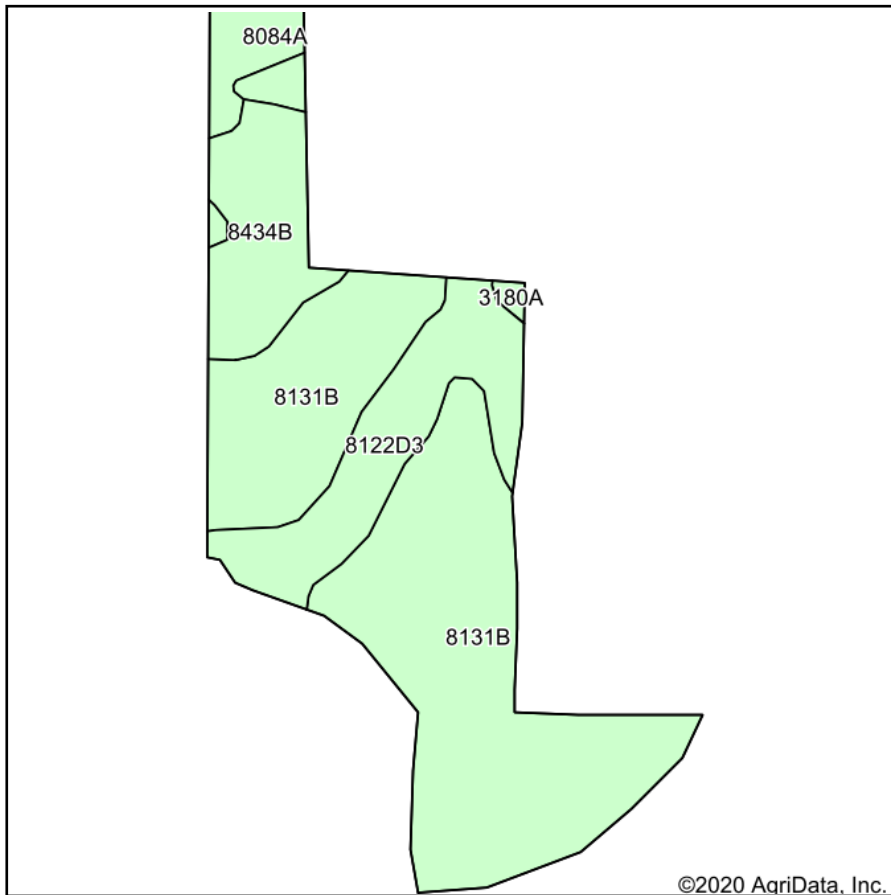
12/16/2020



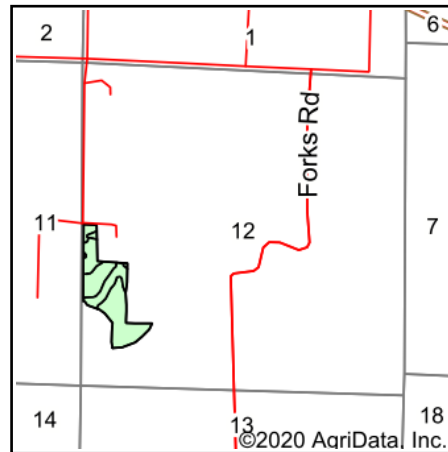
Maps Provided By:
 **surety**
CUSTOMIZED ONLINE MAPPING
© AgriData, Inc. 2020 www.AgriDataInc.com

Field borders provided by Farm Service Agency as of 5/21/2008.

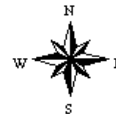
Soils Map



Soils data provided by USDA and NRCS.



State: **Illinois**
 County: **St Clair**
 Location: **12-2S-7W**
 Township: **New Athens**
 Acres: **21.48**
 Date: **12/16/2020**



Code	Soil Description	Acres	Percent of field	Corn Bu/A	Soybeans Bu/A	Wheat Bu/A	Crop productivity index for optimum management
8131B	Alvin fine sandy loam, 2 to 5 percent slopes, occasionally flooded	13.94	64.9%	150	49	59	111
8122D3	Colp silty clay loam, 10 to 18 percent slopes, severely eroded, occasionally flooded	3.73	17.4%	134	42	56	98
8434B	Ridgway silt loam, 2 to 5 percent slopes, occasionally flooded	2.71	12.6%	164	50	61	117
8084A	Okaw silt loam, 0 to 2 percent slopes, occasionally flooded	0.99	4.6%	129	42	55	96
3180A	Dupo silt loam, 0 to 2 percent slopes, frequently flooded	0.11	0.5%	182	56	68	131
Weighted Average				148.2	47.6	58.6	108.9

Table: Optimum Crop Productivity Ratings for Illinois Soil by K.R. Olson and J.M. Lang, Office of Research, ACES, University of Illinois at Champaign-Urbana. Version: 1/2/2012 Amended Table S2 B811

Crop yields and productivity indices for optimum management (B811) are maintained at the following NRES web site: <http://soilproductivity.nres.illinois.edu/>

** Indexes adjusted for slope and erosion according to Bulletin 811 Table S3

Soils data provided by USDA and NRCS. Soils data provided by University of Illinois at Champaign-Urbana.

