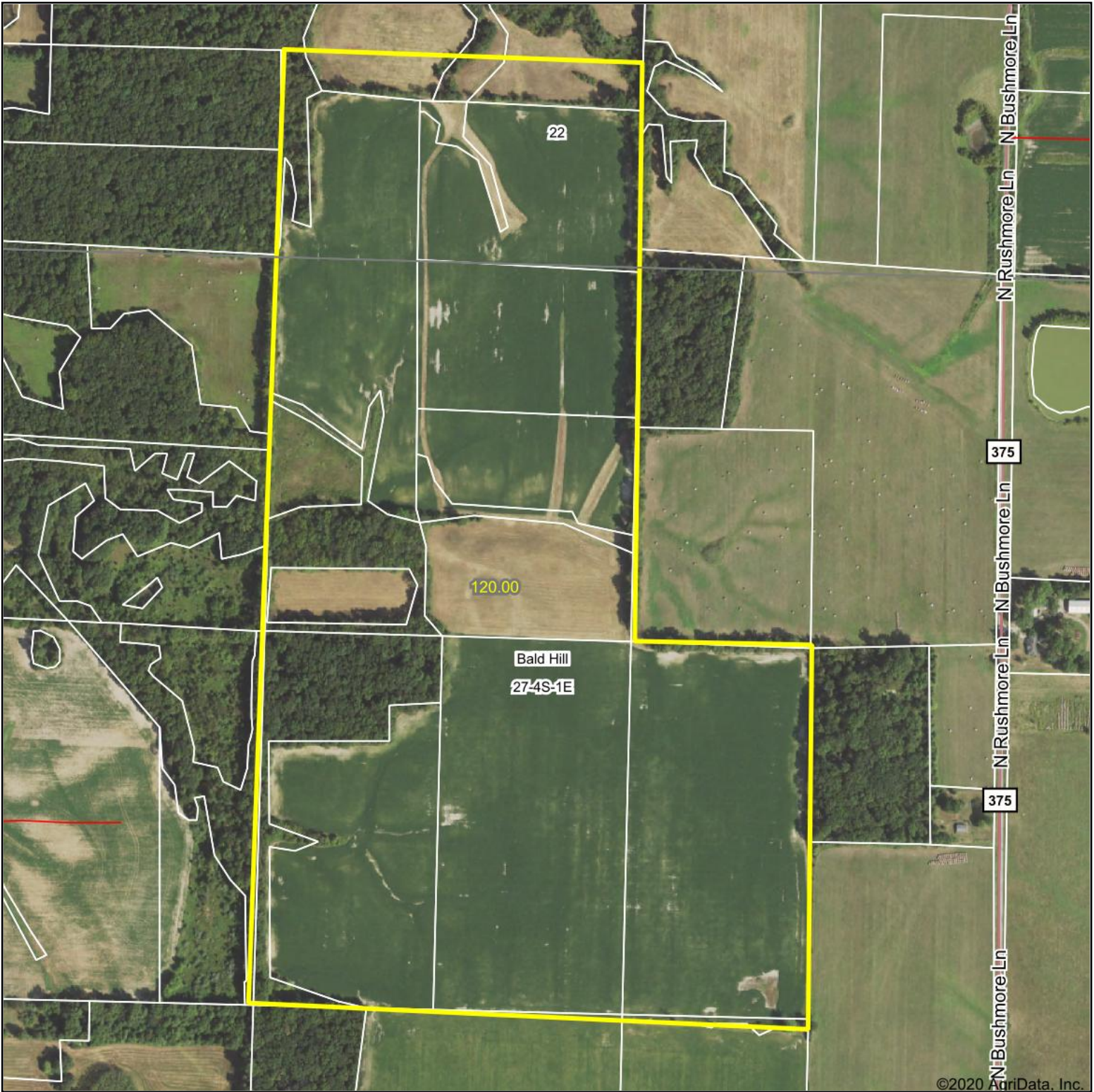


# Aerial Map

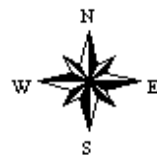


©2020 AgriData, Inc.

Map Center: 38° 9' 3.32, -89° 5' 13.72



**27-4S-1E**  
**Jefferson County**  
**Illinois**



9/16/2020



Maps Provided By:



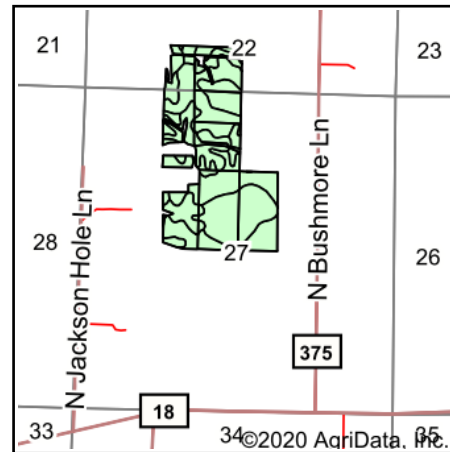
© AgriData, Inc. 2020 www.AgriDataInc.com

Field borders provided by Farm Service Agency as of 5/21/2008.

# Soils Map



Soils data provided by USDA and NRCS.



State: **Illinois**  
 County: **Jefferson**  
 Location: **27-4S-1E**  
 Township: **Bald Hill**  
 Acres: **105.63**  
 Date: **9/16/2020**

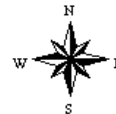


Maps Provided By:



© AgriData, Inc. 2020

www.AgriDataInc.com



Area Symbol: IL081. Soil Area Version: 13									
Code	Soil Description	Acres	Percent of field	Il. State Productivity Index Legend	Corn Bu/A	Soybeans Bu/A	Wheat Bu/A	Grass-legume e hay, T/A	Crop productivity index for optimum management
13A	Bluford silt loam, 0 to 2 percent slopes	45.05	42.6%		136	44	55	3.39	101
12A	Wynoose silt loam, 0 to 2 percent slopes	26.57	25.2%		128	42	51	4.26	97
**927D3	Blair-Atlas silty clay loams, 10 to 18 percent slopes, severely eroded	10.97	10.4%		**90	**30	**36	**2.79	**68
**13B2	Bluford silt loam, 2 to 5 percent slopes, eroded	6.41	6.1%		**129	**42	**52	**3.22	**96
**14B	Ava silt loam, 2 to 5 percent slopes	5.89	5.6%		**134	**44	**54	0.00	**99
**301C3	Grantsburg silty clay loam, 5 to 10 percent slopes, severely eroded	2.63	2.5%		**99	**34	**41	0.00	**75
**5C3	Blair silty clay loam, 5 to 10 percent slopes, severely eroded	2.05	1.9%		**102	**33	**41	**3.25	**77
**14C2	Ava silt loam, 5 to 10 percent slopes, eroded	2.00	1.9%		**122	**40	**50	0.00	**90
**8D3	Hickory clay loam, 10 to 18 percent slopes, severely eroded	1.89	1.8%		**98	**33	**40	0.00	**75
**340D3	Zanesville silt loam, till plain, 10 to 18 percent slopes, severely eroded	1.81	1.7%		**86	**30	**37	**2.68	**65
**908F	Hickory-Kell silt loams, 18 to 35 percent slopes	0.36	0.3%		**87	**29	**34	**2.81	**67
<b>Weighted Average</b>					<b>125.1</b>	<b>40.9</b>	<b>50.4</b>	<b>3.12</b>	<b>93.6</b>

**Table: Optimum Crop Productivity Ratings for Illinois Soil by K.R. Olson and J.M. Lang, Office of Research, ACES, University of Illinois at Champaign-Urbana.** Version: 1/2/2012 Amended Table S2 B811

Crop yields and productivity indices for optimum management (B811) are maintained at the following NRES web site: <http://soilproductivity.nres.illinois.edu/>

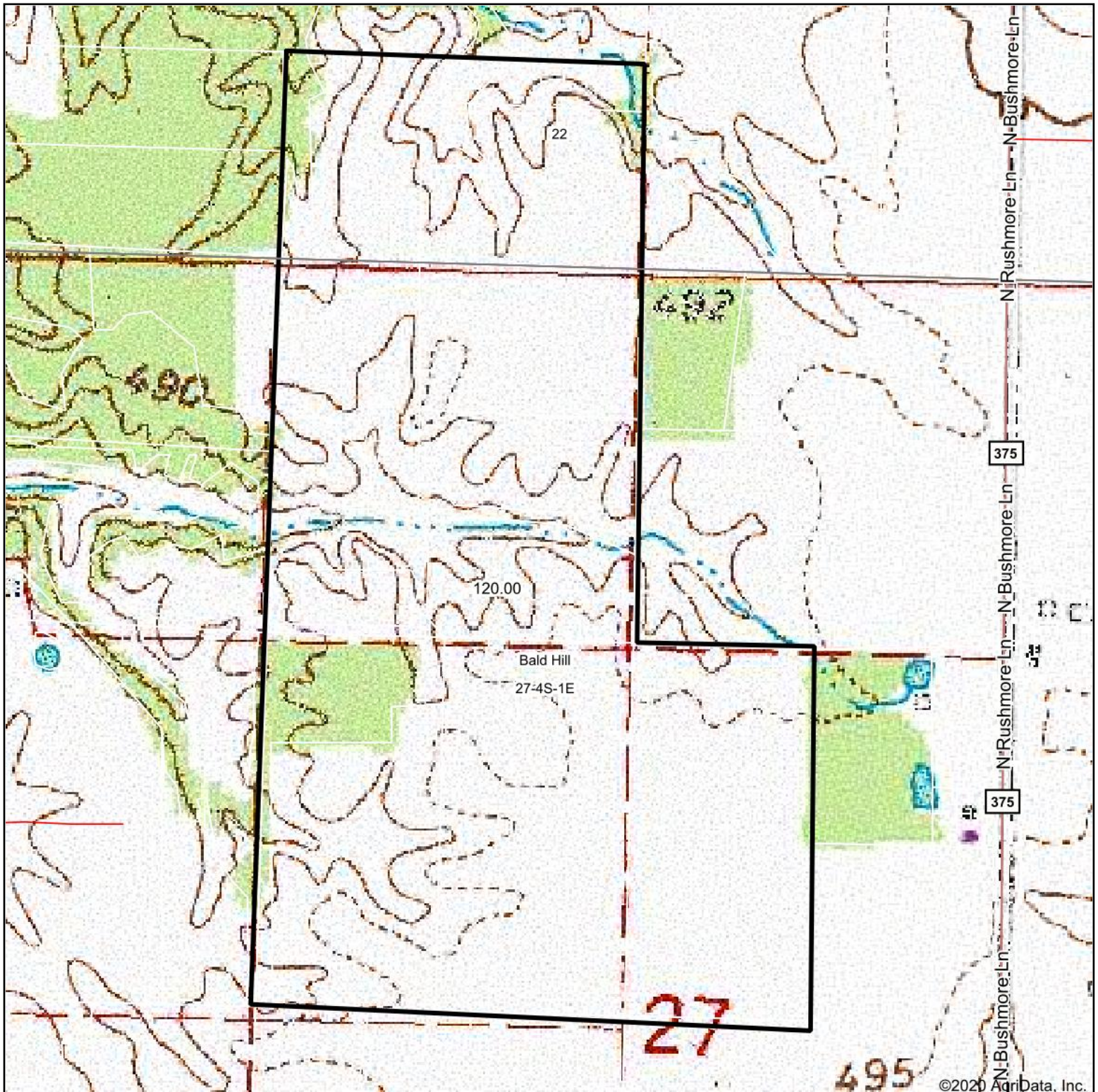
\*\* Indexes adjusted for slope and erosion according to Bulletin 811 Table S3

e Soils in the well drained group were not rated for grass-legume and are shown with a zero "0".

\*c: Using Capabilities Class Dominant Condition Aggregation Method

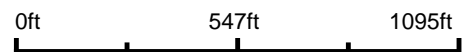
Soils data provided by USDA and NRCS. Soils data provided by University of Illinois at Champaign-Urbana.

# Topography Map

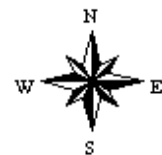


©2020 AgriData, Inc.

map center: 38° 9' 3.32, -89° 5' 13.72



**27-4S-1E**  
**Jefferson County**  
**Illinois**



9/16/2020



Maps Provided By:



© AgriData, Inc. 2020

www.AgridataInc.com

Field borders provided by Farm Service Agency as of 5/21/2008.