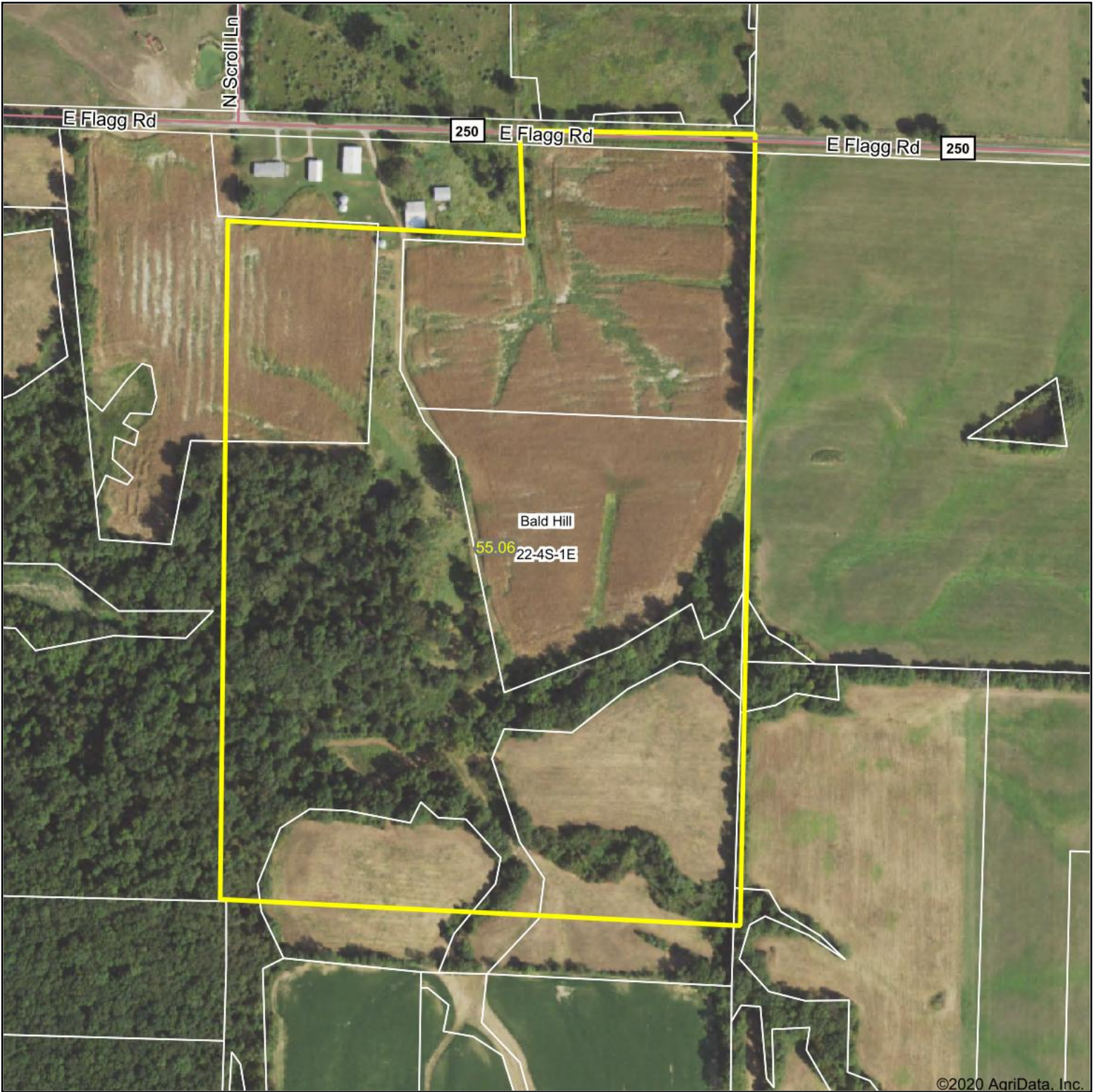
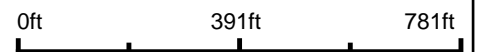


Aerial Map

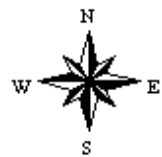


©2020 AgriData, Inc.

Map Center: 38° 9' 29.37, -89° 5' 16.1



22-4S-1E
Jefferson County
Illinois



9/17/2020



Maps Provided By:



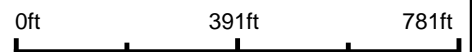
© AgriData, Inc. 2020 www.AgridataInc.com

Field borders provided by Farm Service Agency as of 5/21/2008.

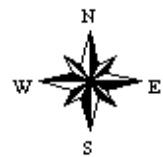
Aerial Map



Map Center: 38° 9' 29.37, -89° 5' 16.1



22-4S-1E
Jefferson County
Illinois



9/17/2020



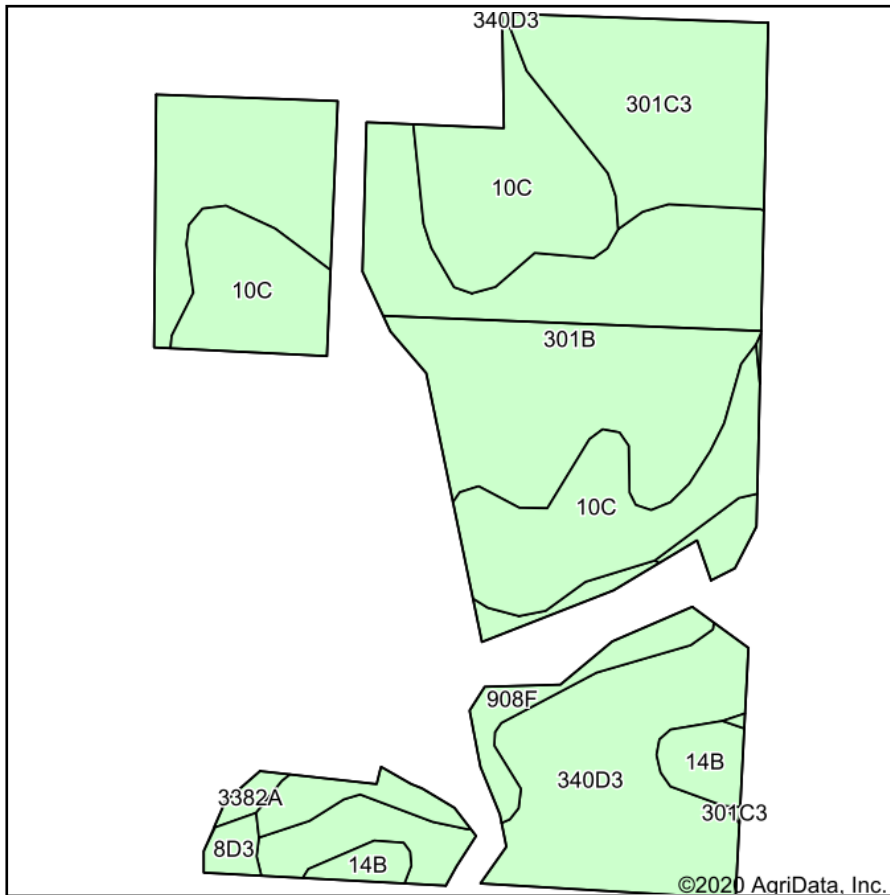
Maps Provided By:



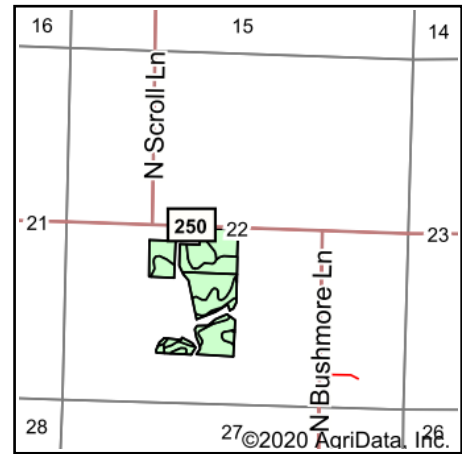
© AgriData, Inc. 2020 www.AgriDataInc.com

Field borders provided by Farm Service Agency as of 5/21/2008.

Soils Map



Soils data provided by USDA and NRCS.



State: **Illinois**
 County: **Jefferson**
 Location: **22-4S-1E**
 Township: **Bald Hill**
 Acres: **35.46**
 Date: **9/17/2020**



Maps Provided By:



Area Symbol: IL081. Soil Area Version: 13									
Code	Soil Description	Acres	Percent of field	Il. State Productivity Index Legend	Corn Bu/A	Soybeans Bu/A	Wheat Bu/A	Grass-legume e hay, T/A	Crop productivity index for optimum management
**301B	Grantsburg silt loam, 2 to 5 percent slopes	12.56	35.4%		**133	**46	**54	0.00	**101
**10C	Plumfield silty clay loam, 5 to 10 percent slopes	8.49	23.9%		**103	**34	**39	**3.37	**78
**340D3	Zanesville silt loam, till plain, 10 to 18 percent slopes, severely eroded	6.71	18.9%		**86	**30	**37	**2.68	**65
**301C3	Grantsburg silty clay loam, 5 to 10 percent slopes, severely eroded	4.31	12.2%		**99	**34	**41	0.00	**75
**908F	Hickory-Kell silt loams, 18 to 35 percent slopes	1.92	5.4%		**87	**29	**34	**2.81	**67
**14B	Ava silt loam, 2 to 5 percent slopes	0.98	2.8%		**134	**44	**54	0.00	**99
**8D3	Hickory clay loam, 10 to 18 percent slopes, severely eroded	0.30	0.8%		**98	**33	**40	0.00	**75
3382A	Belknap silt loam, 0 to 2 percent slopes, frequently flooded	0.19	0.5%		156	52	63	4.89	117
Weighted Average					110.2	37.6	44.5	1.49	83.5

Table: Optimum Crop Productivity Ratings for Illinois Soil by K.R. Olson and J.M. Lang, Office of Research, ACES, University of Illinois at Champaign-Urbana. Version: 1/2/2012 Amended Table S2 B811

Crop yields and productivity indices for optimum management (B811) are maintained at the following NRES web site: <http://soilproductivity.nres.illinois.edu/>

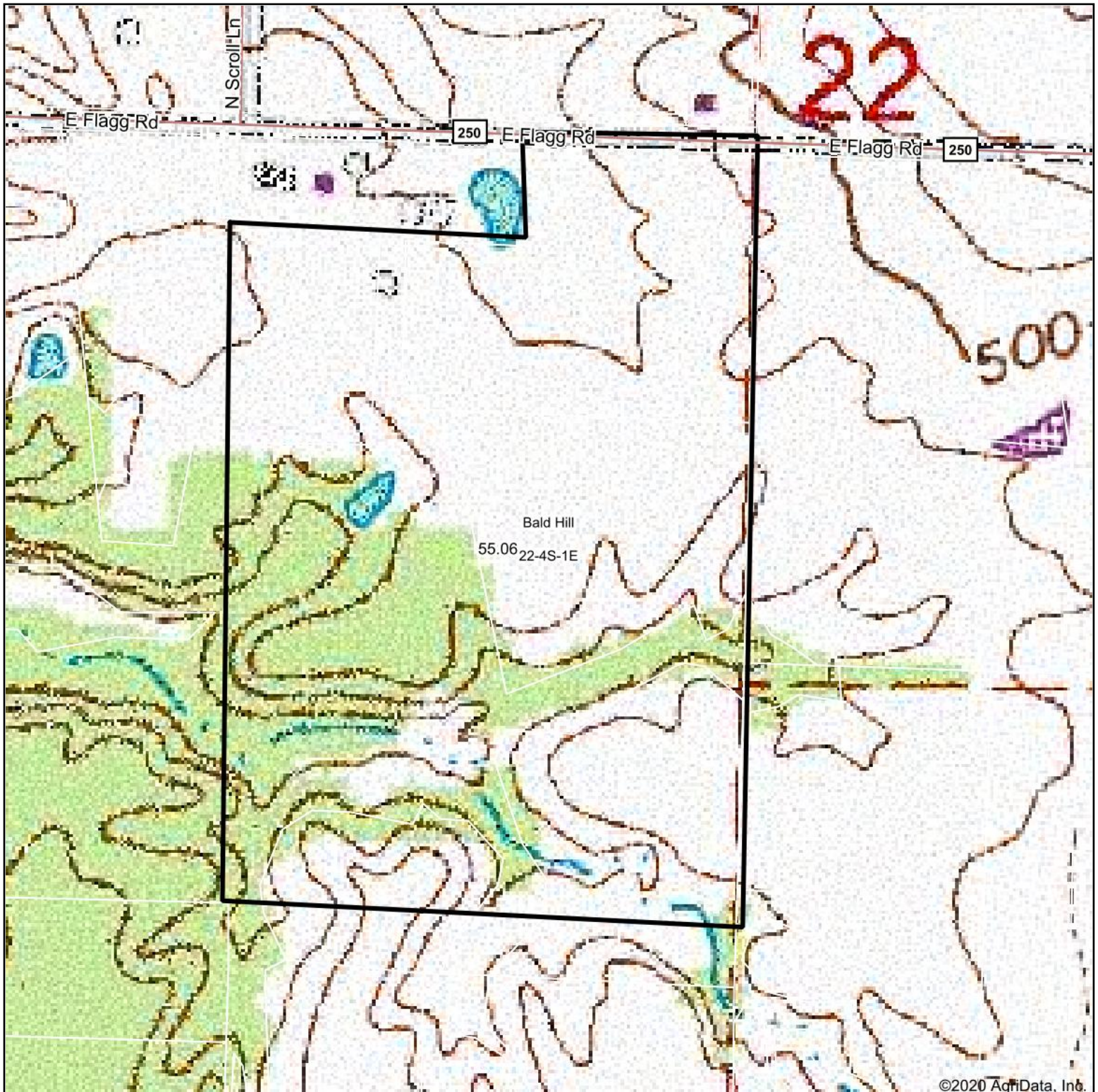
** Indexes adjusted for slope and erosion according to Bulletin 811 Table S3

e Soils in the well drained group were not rated for grass-legume and are shown with a zero "0".

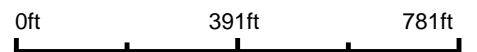
*c: Using Capabilities Class Dominant Condition Aggregation Method

Soils data provided by USDA and NRCS. Soils data provided by University of Illinois at Champaign-Urbana.

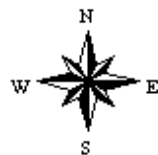
Topography Map



map center: 38° 9' 29.37, -89° 5' 16.1



22-4S-1E
Jefferson County
Illinois



9/17/2020



Maps Provided By:



© AgriData, Inc. 2020

www.AgridataInc.com