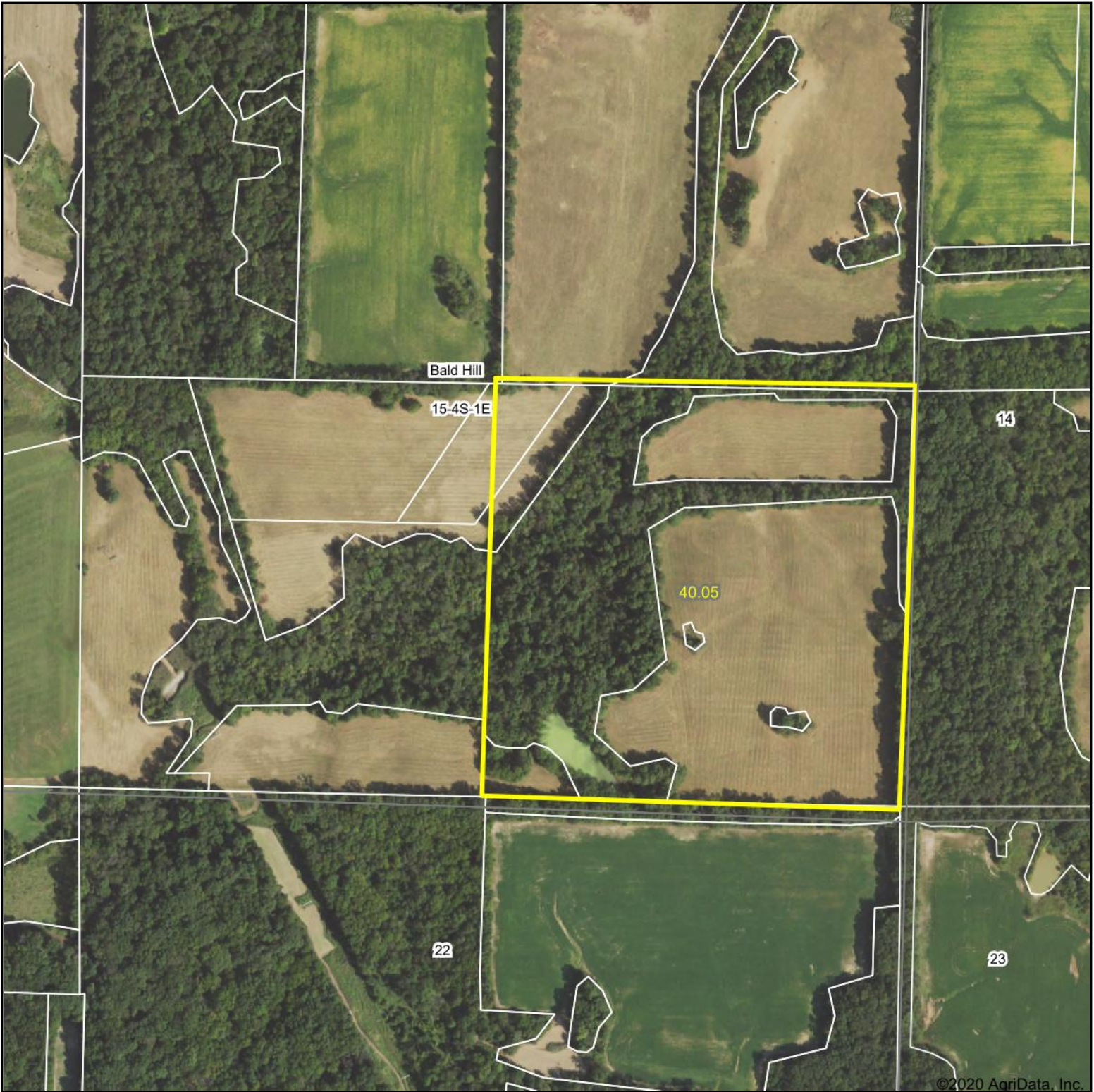
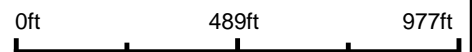


# Aerial Map



©2020 AgriData, Inc.

Map Center: 38° 10' 13.53, -89° 4' 51.87



**15-4S-1E**  
**Jefferson County**  
**Illinois**



9/16/2020



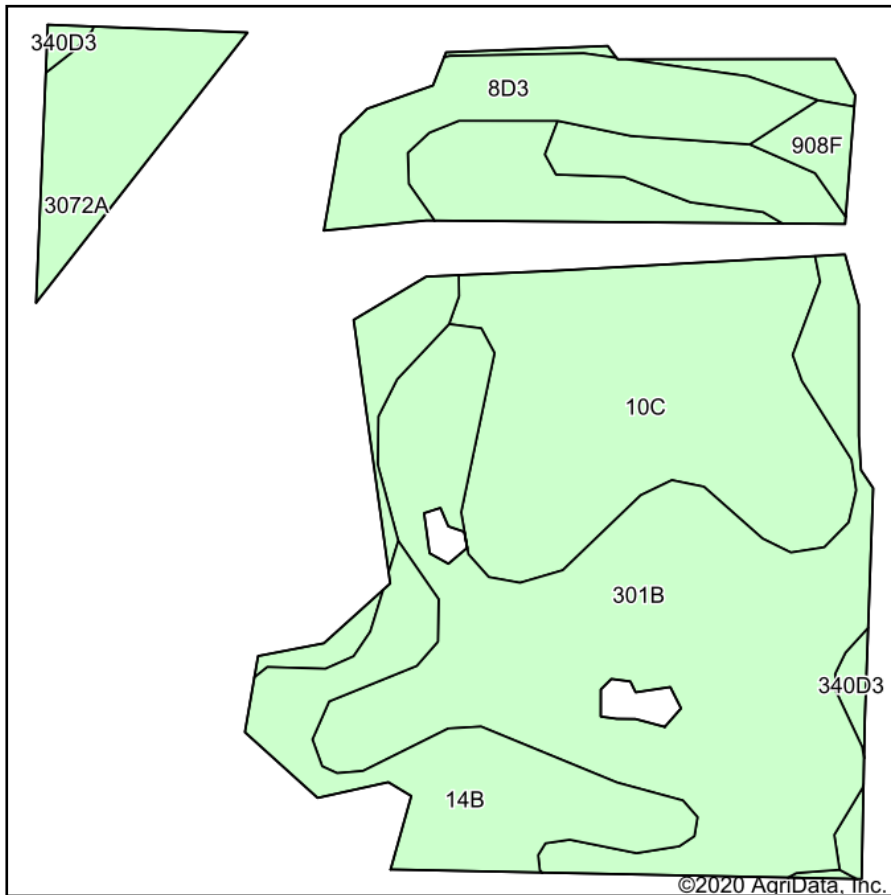
Maps Provided By:



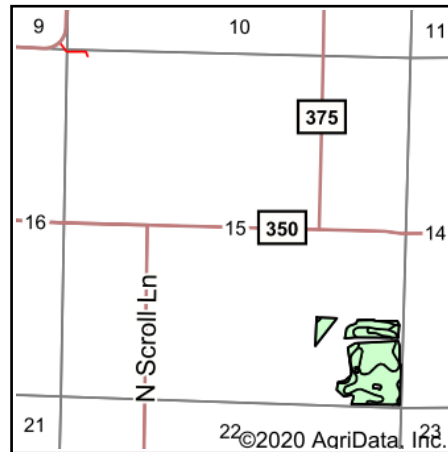
© AgriData, Inc. 2020 www.AgriDataInc.com

Field borders provided by Farm Service Agency as of 5/21/2008.

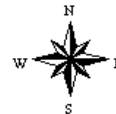
# Soils Map



Soils data provided by USDA and NRCS.



State: **Illinois**  
 County: **Jefferson**  
 Location: **15-4S-1E**  
 Township: **Bald Hill**  
 Acres: **23.25**  
 Date: **9/16/2020**



Area Symbol: IL081. Soil Area Version: 13									
Code	Soil Description	Acres	Percent of field	Il. State Productivity Index Legend	Corn Bu/A	Soybeans Bu/A	Wheat Bu/A	Grass-legume e hay, T/A	Crop productivity index for optimum management
**301B	Grantsburg silt loam, 2 to 5 percent slopes	9.29	40.0%		**133	**46	**54	0.00	**101
**10C	Plumfield silty clay loam, 5 to 10 percent slopes	6.40	27.5%		**103	**34	**39	**3.37	**78
**8D3	Hickory clay loam, 10 to 18 percent slopes, severely eroded	2.61	11.2%		**98	**33	**40	0.00	**75
**14B	Ava silt loam, 2 to 5 percent slopes	2.57	11.1%		**134	**44	**54	0.00	**99
3072A	Sharon silt loam, 0 to 2 percent slopes, frequently flooded	1.78	7.7%		164	53	63	0.00	122
**908F	Hickory-Kell silt loams, 18 to 35 percent slopes	0.31	1.3%		**87	**29	**34	**2.81	**67
**340D3	Zanesville silt loam, till plain, 10 to 18 percent slopes, severely eroded	0.29	1.2%		**86	**30	**37	**2.68	**65
<b>Weighted Average</b>					<b>122.1</b>	<b>41.1</b>	<b>48.5</b>	<b>1.00</b>	<b>92.2</b>

**Table: Optimum Crop Productivity Ratings for Illinois Soil by K.R. Olson and J.M. Lang, Office of Research, ACES, University of Illinois at Champaign-Urbana.** Version: 1/2/2012 Amended Table S2 B811

Crop yields and productivity indices for optimum management (B811) are maintained at the following NRES web site: <http://soilproductivity.nres.illinois.edu/>

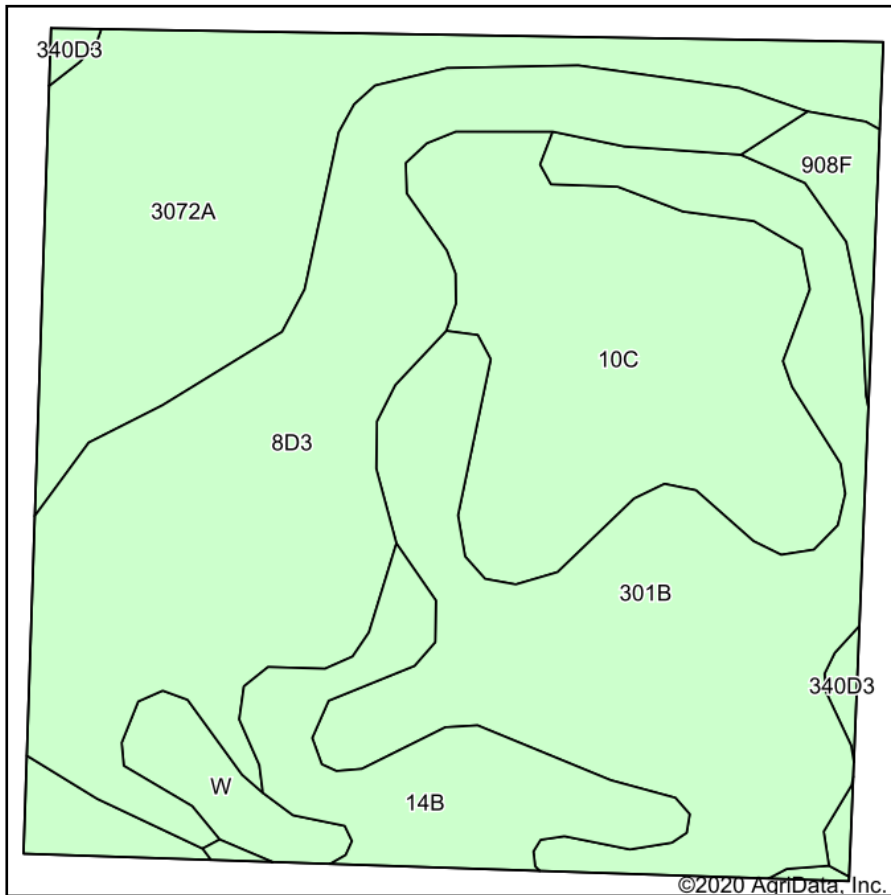
\*\* Indexes adjusted for slope and erosion according to Bulletin 811 Table S3

e Soils in the well drained group were not rated for grass-legume and are shown with a zero "0".

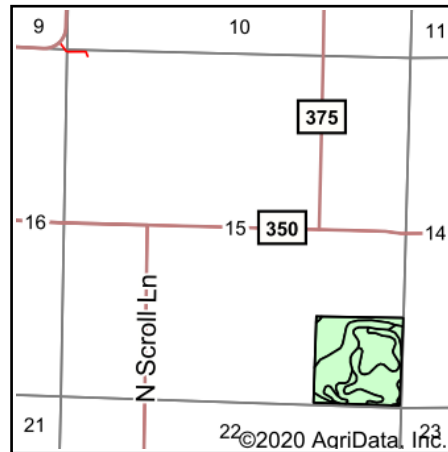
\*c: Using Capabilities Class Dominant Condition Aggregation Method

Soils data provided by USDA and NRCS. Soils data provided by University of Illinois at Champaign-Urbana.

# Soils Map



Soils data provided by USDA and NRCS.



State: **Illinois**  
 County: **Jefferson**  
 Location: **15-4S-1E**  
 Township: **Bald Hill**  
 Acres: **40.05**  
 Date: **9/16/2020**



Area Symbol: IL081. Soil Area Version: 13									
Code	Soil Description	Acres	Percent of field	Il. State Productivity Index Legend	Corn Bu/A	Soybeans Bu/A	Wheat Bu/A	Grass-legume e hay, T/A	Crop productivity index for optimum management
**301B	Grantsburg silt loam, 2 to 5 percent slopes	10.44	26.1%		**133	**46	**54	0.00	**101
**8D3	Hickory clay loam, 10 to 18 percent slopes, severely eroded	9.95	24.8%		**98	**33	**40	0.00	**75
3072A	Sharon silt loam, 0 to 2 percent slopes, frequently flooded	7.31	18.3%		164	53	63	0.00	122
**10C	Plumfield silty clay loam, 5 to 10 percent slopes	7.28	18.2%		**103	**34	**39	**3.37	**78
**14B	Ava silt loam, 2 to 5 percent slopes	3.12	7.8%		**134	**44	**54	0.00	**99
W	Water	0.92	2.3%						
**908F	Hickory-Kell silt loams, 18 to 35 percent slopes	0.70	1.7%		**87	**29	**34	**2.81	**67
**340D3	Zanesville silt loam, till plain, 10 to 18 percent slopes, severely eroded	0.33	0.8%		**86	**30	**37	**2.68	**65
<b>Weighted Average</b>					<b>120.3</b>	<b>40.2</b>	<b>47.7</b>	<b>0.68</b>	<b>90.8</b>

**Table: Optimum Crop Productivity Ratings for Illinois Soil by K.R. Olson and J.M. Lang, Office of Research, ACES, University of Illinois at Champaign-Urbana.** Version: 1/2/2012 Amended Table S2 B811

Crop yields and productivity indices for optimum management (B811) are maintained at the following NRES web site: <http://soilproductivity.nres.illinois.edu/>

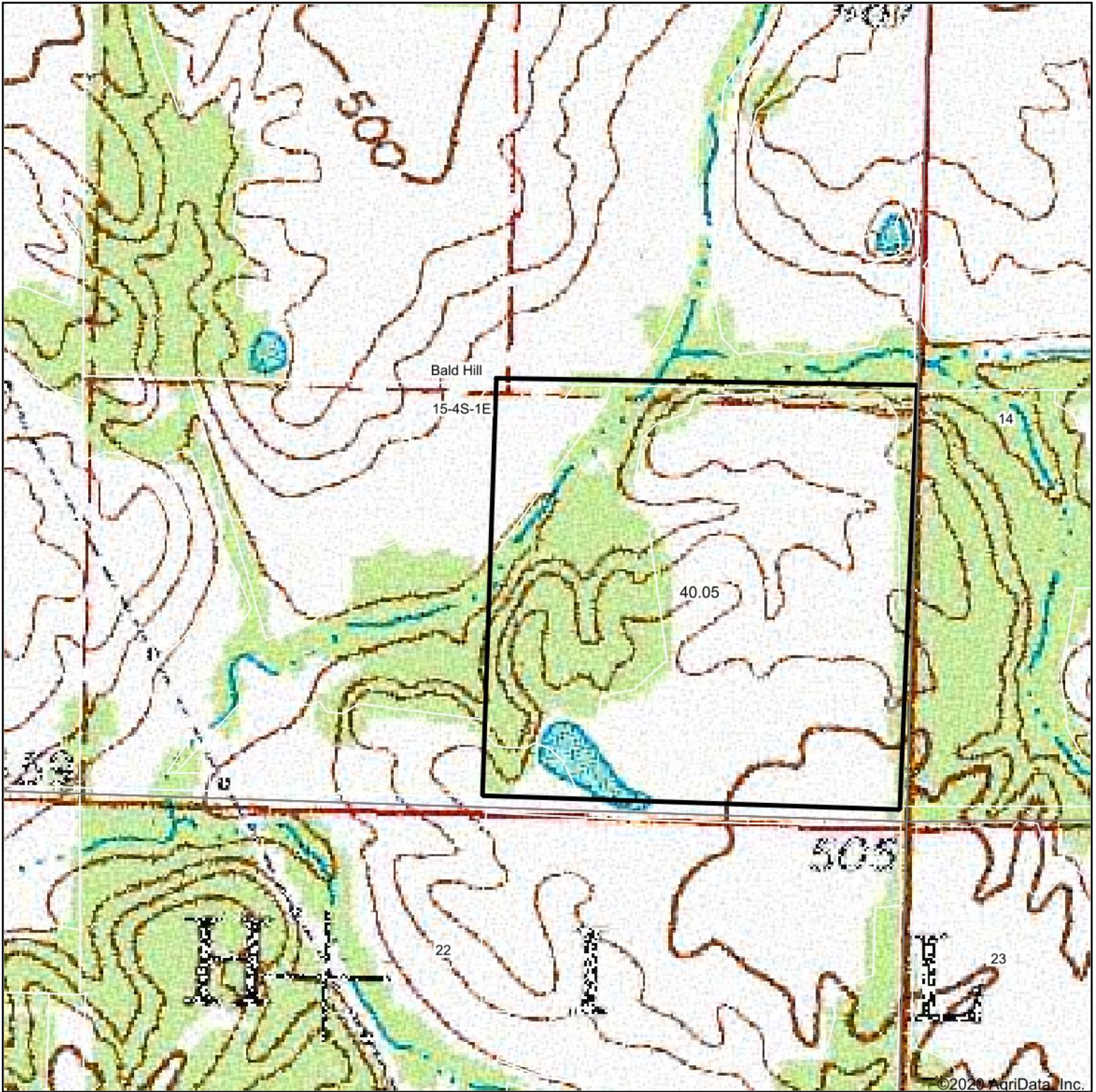
\*\* Indexes adjusted for slope and erosion according to Bulletin 811 Table S3

e Soils in the well drained group were not rated for grass-legume and are shown with a zero "0".

\*c: Using Capabilities Class Dominant Condition Aggregation Method

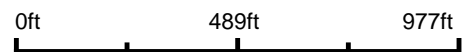
Soils data provided by USDA and NRCS. Soils data provided by University of Illinois at Champaign-Urbana.

# Topography Map

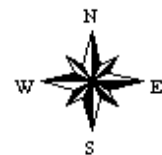


©2020 AgriData, Inc.

map center: 38° 10' 13.53, -89° 4' 51.87



**15-4S-1E**  
**Jefferson County**  
**Illinois**



9/16/2020



Maps Provided By:



© AgriData, Inc. 2020

www.AgridataInc.com

Field borders provided by Farm Service Agency as of 5/21/2008.