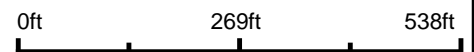


Aerial Map

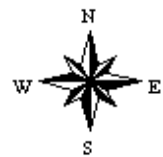


©2019 AgriData, Inc.

Map Center: 38° 3' 59.13, -89° 14' 11.07



29-5S-1W
Perry County
Illinois

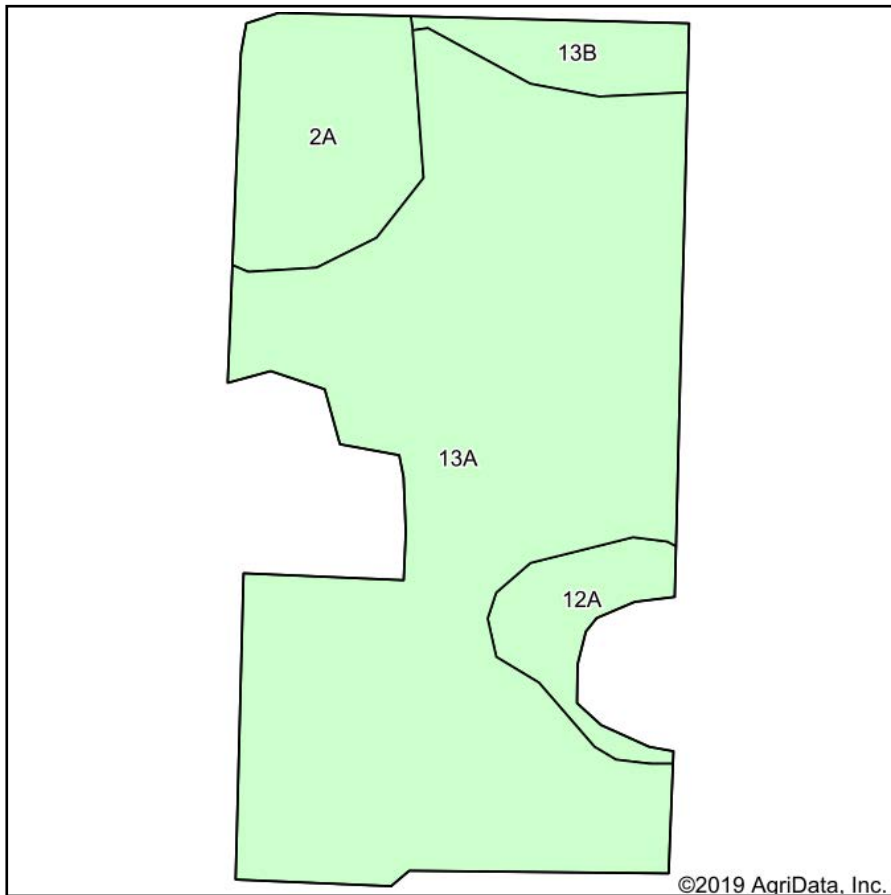


3/10/2020

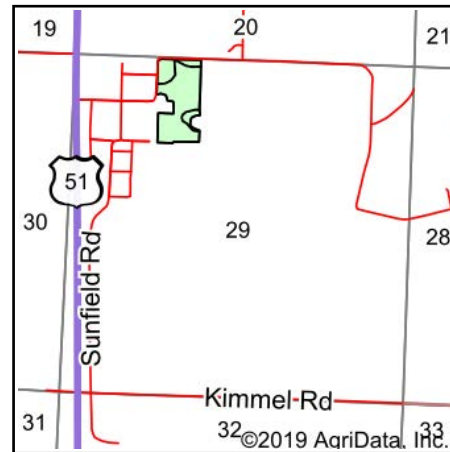
Maps Provided By:
 **surety**[®]
CUSTOMIZED ONLINE MAPPING
© AgriData, Inc. 2019 www.AgriDataInc.com

Field borders provided by Farm Service Agency as of 5/21/2008.

Soils Map



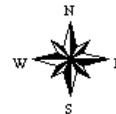
Soils data provided by USDA and NRCS.



State: **Illinois**
 County: **Perry**
 Location: **29-5S-1W**
 Township: **Sunfield**
 Acres: **18.34**
 Date: **3/10/2020**



Maps Provided By:



Area Symbol: IL145, Soil Area Version: 16								
Code	Soil Description	Acres	Percent of field	Il. State Productivity Index Legend	Corn Bu/A	Soybeans Bu/A	Wheat Bu/A	Crop productivity index for optimum management
13A	Bluford silt loam, 0 to 2 percent slopes	14.20	77.4%		136	44	55	101
2A	Cisne silt loam, 0 to 2 percent slopes	2.29	12.5%		149	46	59	109
12A	Wynoose silt loam, 0 to 2 percent slopes	1.02	5.6%		128	42	51	97
**13B	Bluford silt loam, 2 to 5 percent slopes	0.83	4.5%		**135	**44	**54	**100
Weighted Average					137.1	44.1	55.2	101.7

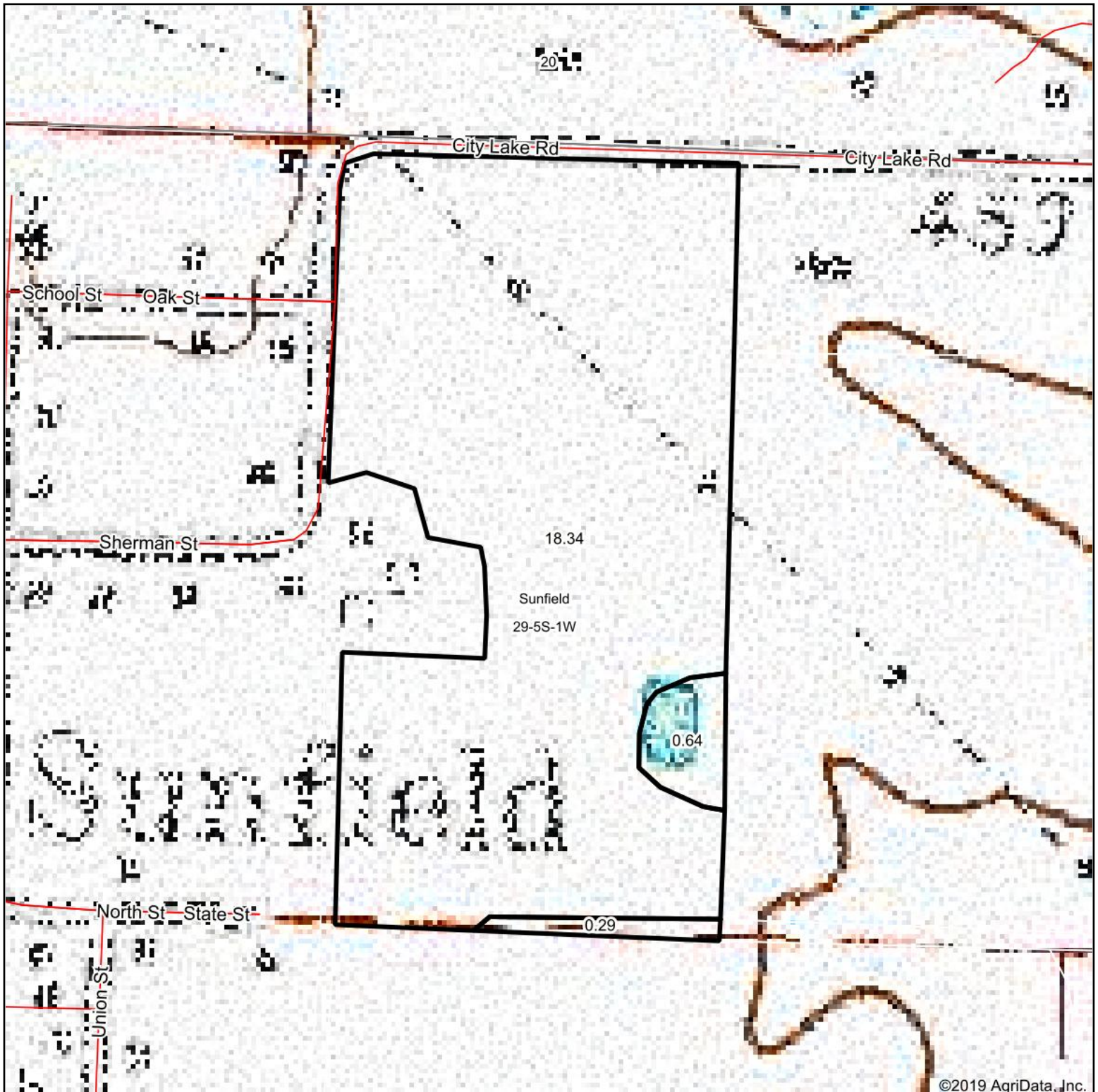
Table: Optimum Crop Productivity Ratings for Illinois Soil by K.R. Olson and J.M. Lang, Office of Research, ACES, University of Illinois at Champaign-Urbana. Version: 1/2/2012 Amended Table S2 B811

Crop yields and productivity indices for optimum management (B811) are maintained at the following NRES web site: <http://soilproductivity.nres.illinois.edu/>

** Indexes adjusted for slope and erosion according to Bulletin 811 Table S3

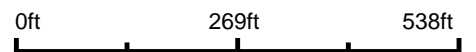
Soils data provided by USDA and NRCS. Soils data provided by University of Illinois at Champaign-Urbana.

Topography Map

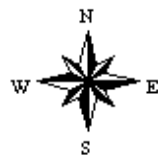


©2019 AgriData, Inc.

map center: 38° 3' 59.13, -89° 14' 11.07



29-5S-1W
Perry County
Illinois



3/10/2020



Maps Provided By:



© AgriData, Inc. 2019 www.AgriDataInc.com