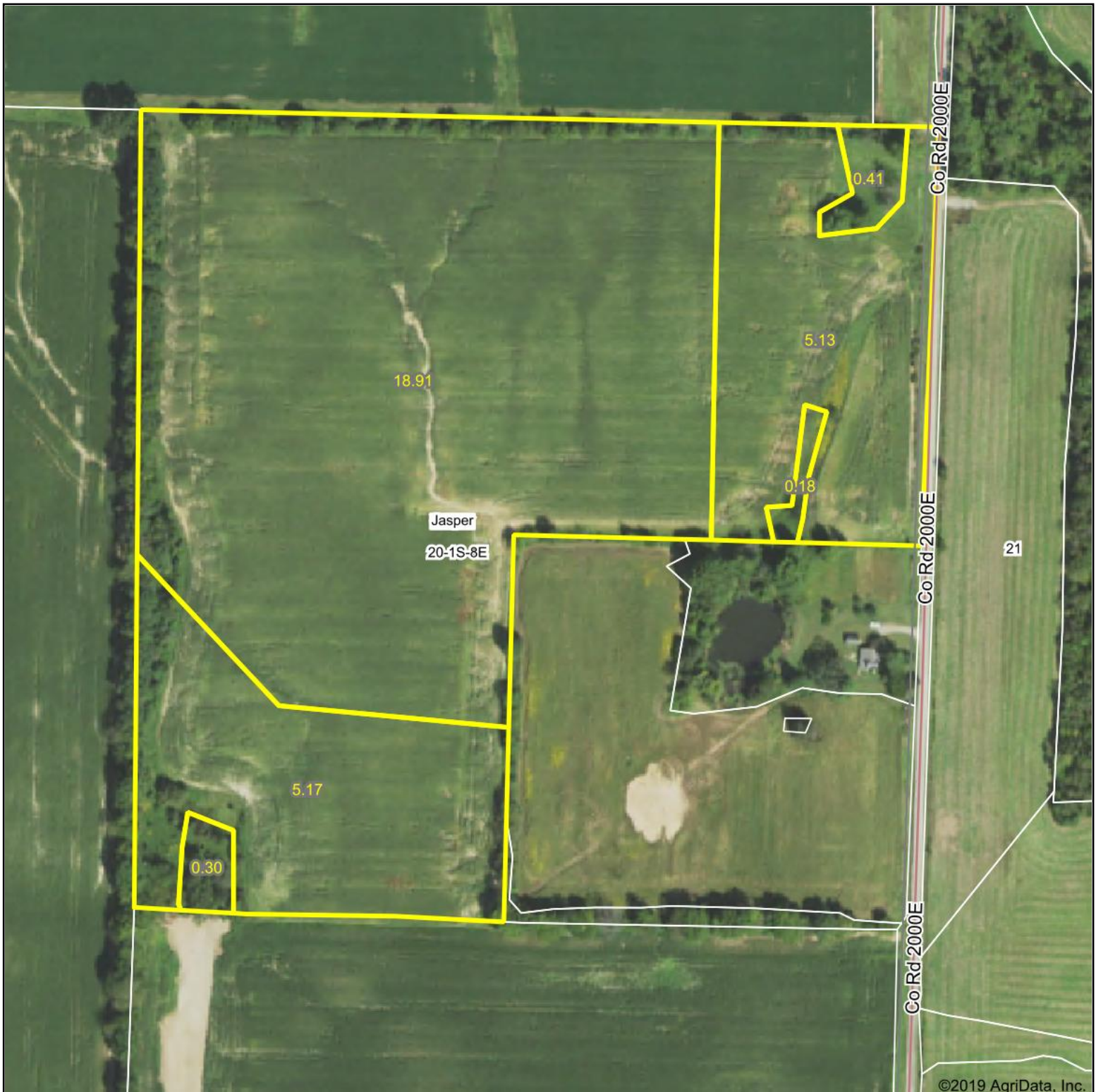


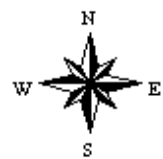
# Aerial Map



Map Center: 38° 25' 14.65, -88° 20' 2.02

0ft 259ft 518ft

**20-1S-8E**  
**Wayne County**  
**Illinois**



2/24/2020



Maps Provided By:

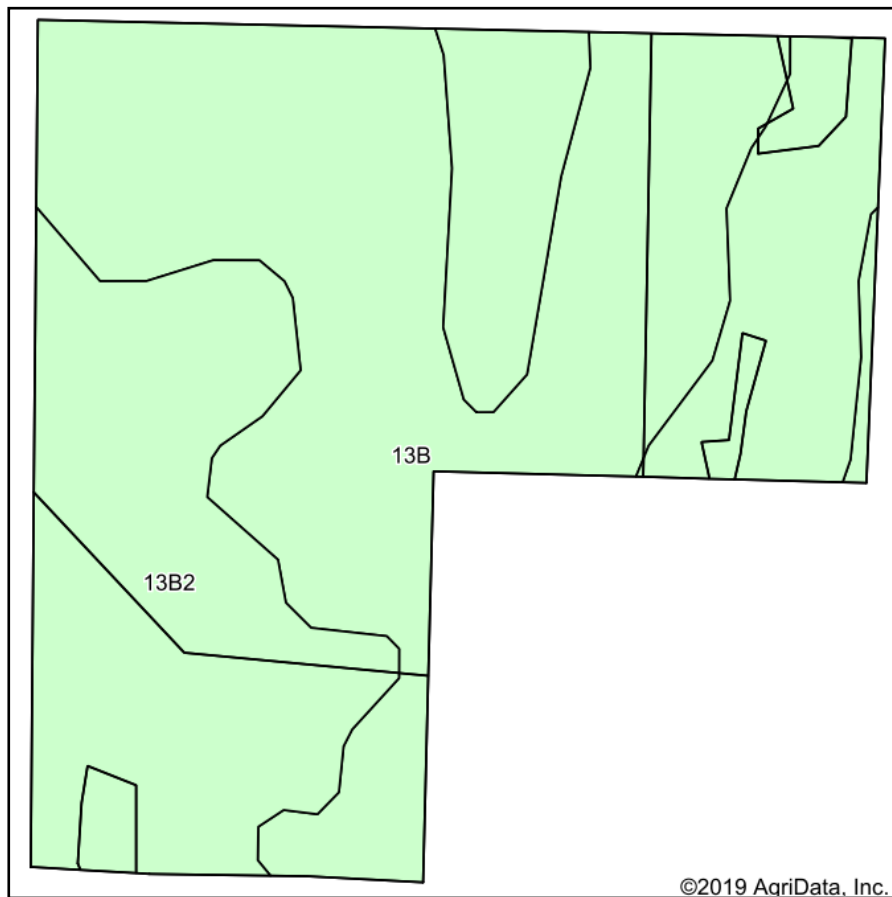


© AgriData, Inc. 2019

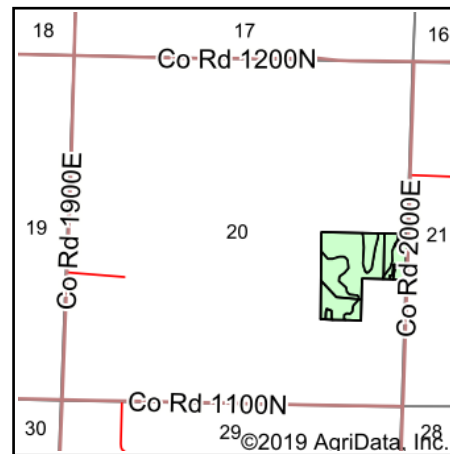
www.AgriDataInc.com

Field borders provided by Farm Service Agency as of 5/21/2008.

# Soils Map



Soils data provided by USDA and NRCS.



State: **Illinois**  
 County: **Wayne**  
 Location: **20-1S-8E**  
 Township: **Jasper**  
 Acres: **30.1**  
 Date: **2/24/2020**



Maps Provided By:  
 **surety**  
 CUSTOMIZED ONLINE MAPPING  
 © AgriData, Inc. 2019 www.AgriDataInc.com



Area Symbol: IL191, Soil Area Version: 17

Code	Soil Description	Acres	Percent of field	Il. State Productivity Index Legend	Corn Bu/A	Soybeans Bu/A	Wheat Bu/A	Grass-legume e hay, T/A	Crop productivity index for optimum management
**13B	Bluford silt loam, 2 to 5 percent slopes	15.31	50.9%		**135	**44	**54	**3.36	**100
**13B2	Bluford silt loam, 2 to 5 percent slopes, eroded	14.79	49.1%		**129	**42	**52	**3.22	**96
Weighted Average					132.1	43	53	3.29	98

**Table: Optimum Crop Productivity Ratings for Illinois Soil by K.R. Olson and J.M. Lang, Office of Research, ACES, University of Illinois at Champaign-Urbana.** Version: 1/2/2012 Amended Table S2 B811

Crop yields and productivity indices for optimum management (B811) are maintained at the following NRES web site: <http://soilproductivity.nres.illinois.edu/>

\*\* Indexes adjusted for slope and erosion according to Bulletin 811 Table S3

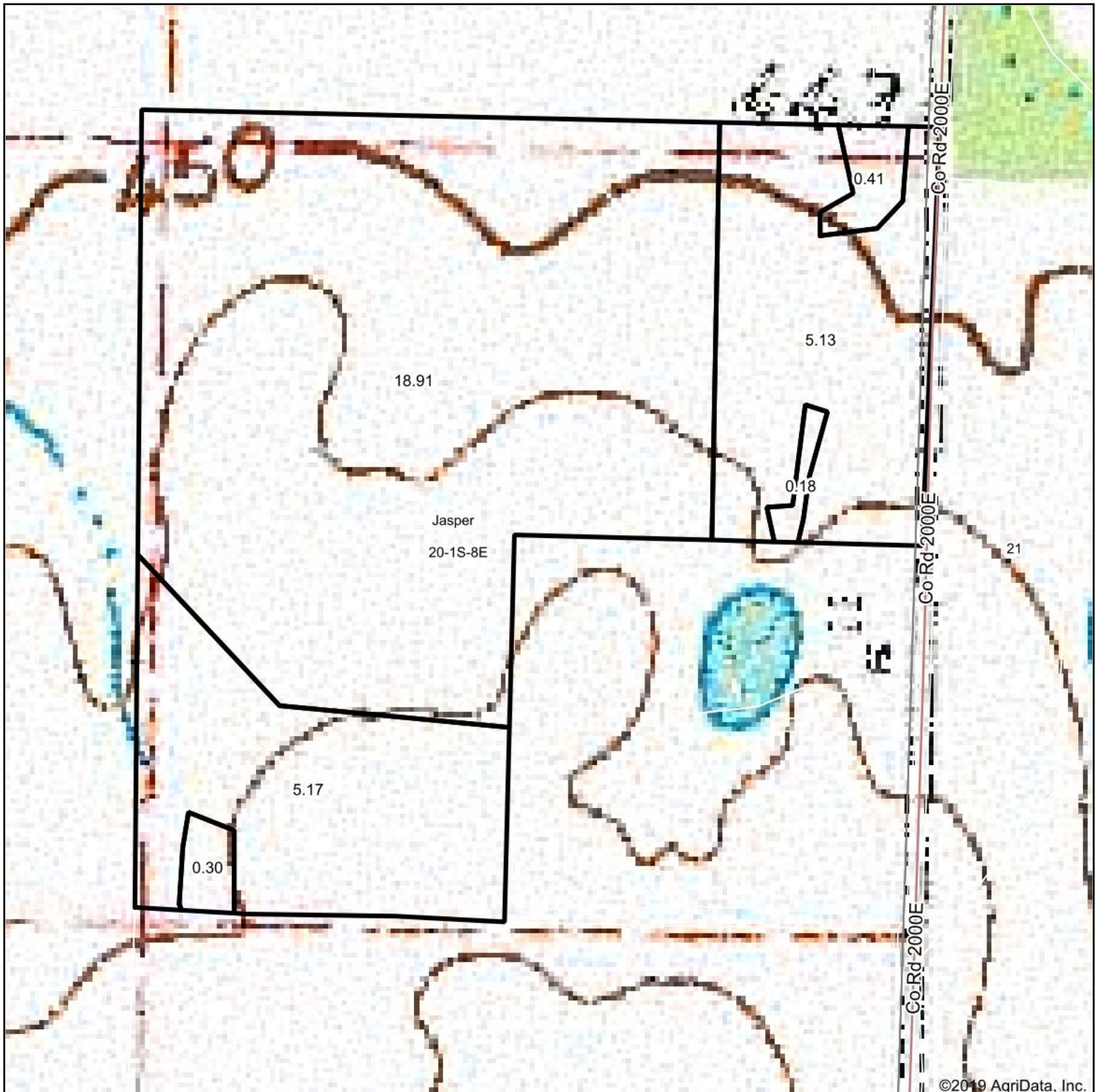
e Soils in the well drained group were not rated for grass-legume and are shown with a zero "0".

\*c: Using Capabilities Class Dominant Condition Aggregation Method

Soils data provided by USDA and NRCS. Soils data provided by University of Illinois at Champaign-Urbana.



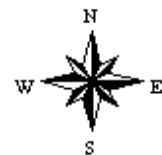
# Topography Map



map center: 38° 25' 14.65, -88° 20' 2.02

0ft 259ft 518ft

**20-1S-8E**  
**Wayne County**  
**Illinois**



2/24/2020



Maps Provided By:



© AgriData, Inc. 2019

www.AgriDataInc.com