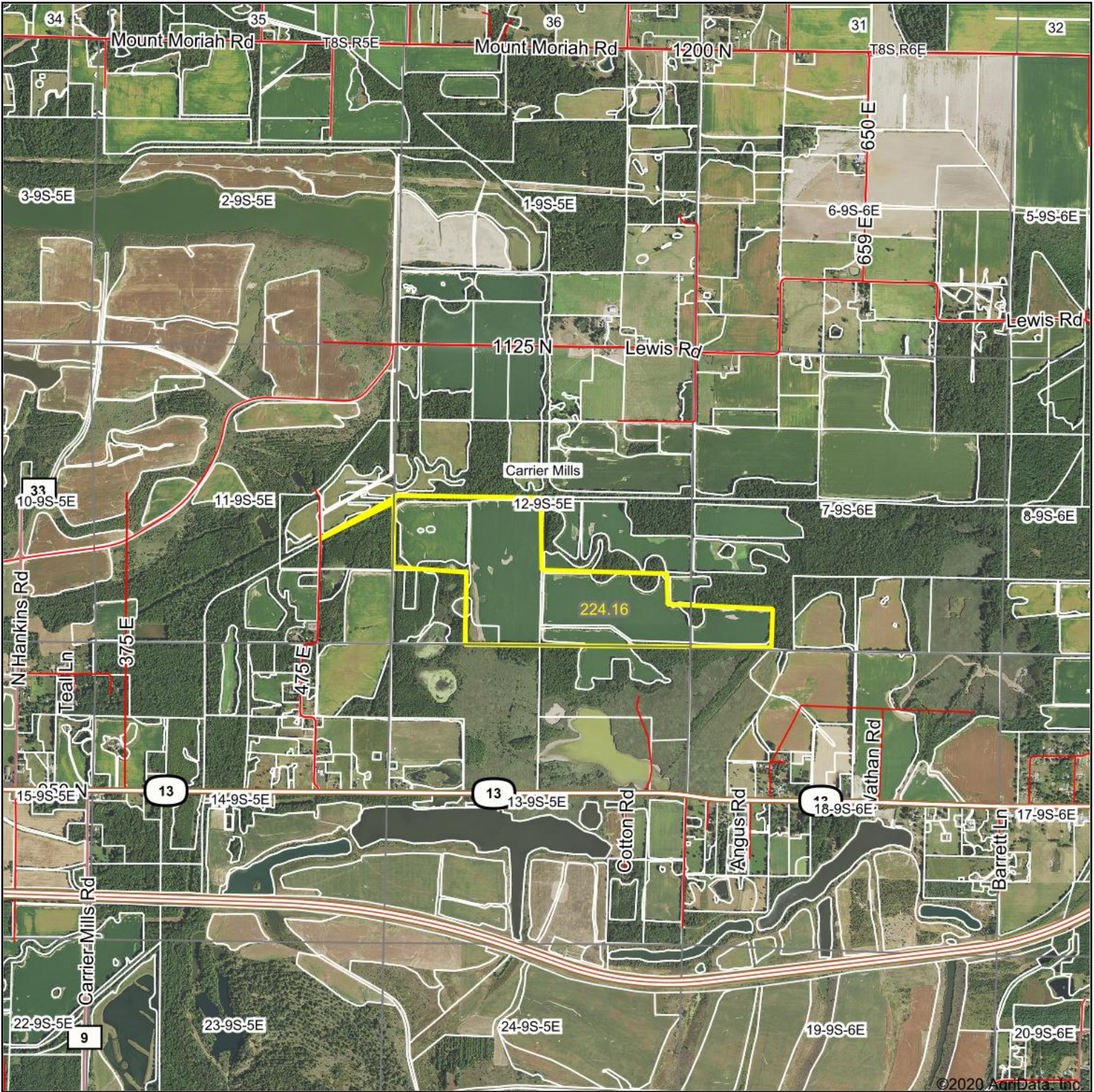


Aerial Map



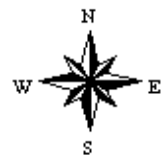
©2020 AgriData, Inc

Map Center: 37° 45' 3.96, -88° 36' 21.01

0ft 2796ft 5591ft



12-9S-5E
Saline County
Illinois

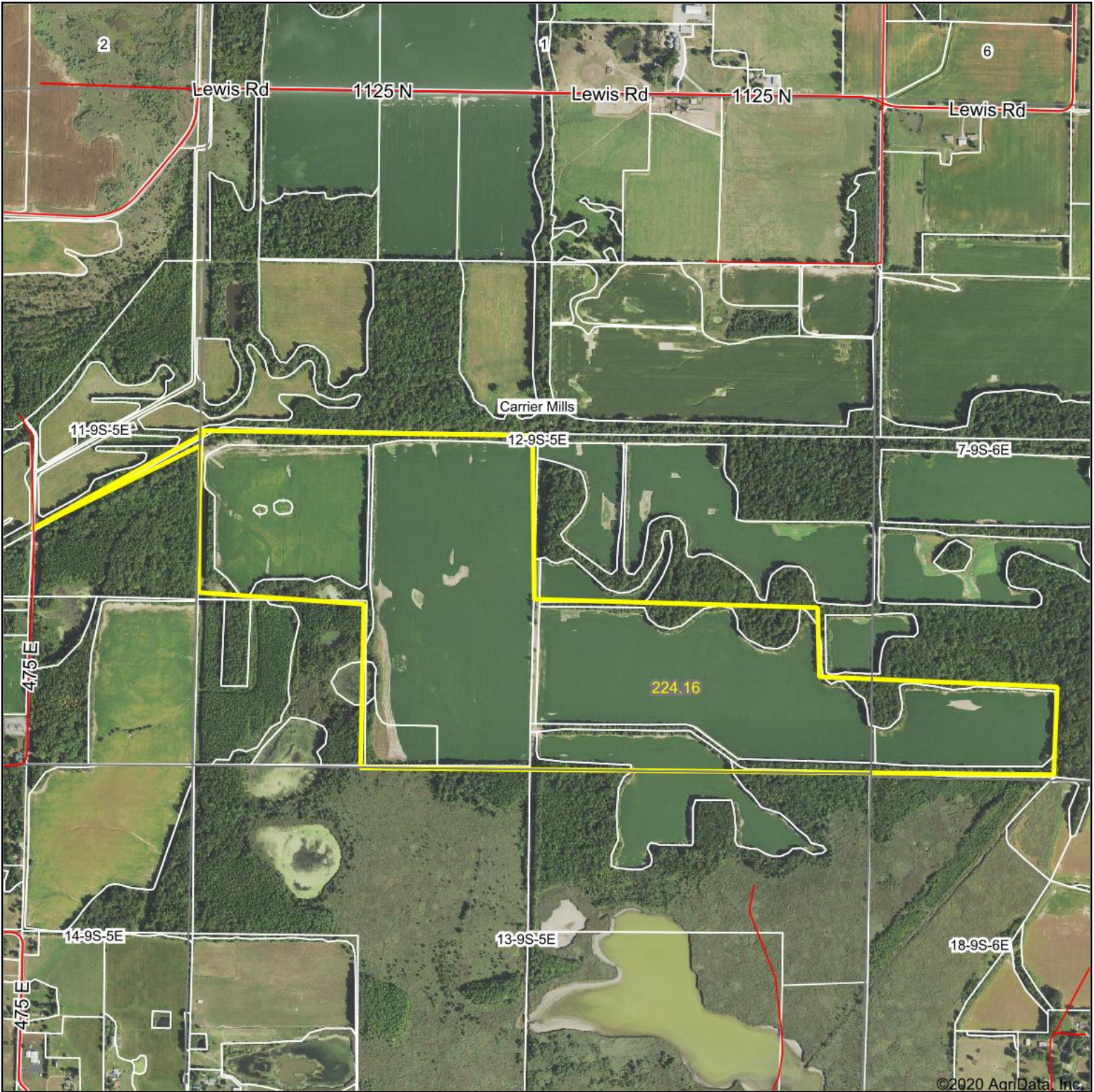


10/2/2020

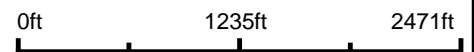
Maps Provided By:
surety
CUSTOMIZED ONLINE MAPPING
© AgriData, Inc. 2020 www.AgridataInc.com

Field borders provided by Farm Service Agency as of 5/21/2008.

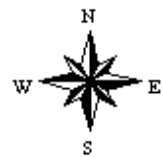
Aerial Map



Map Center: 37° 45' 3.97, -88° 36' 20.87



12-9S-5E
Saline County
Illinois



10/2/2020



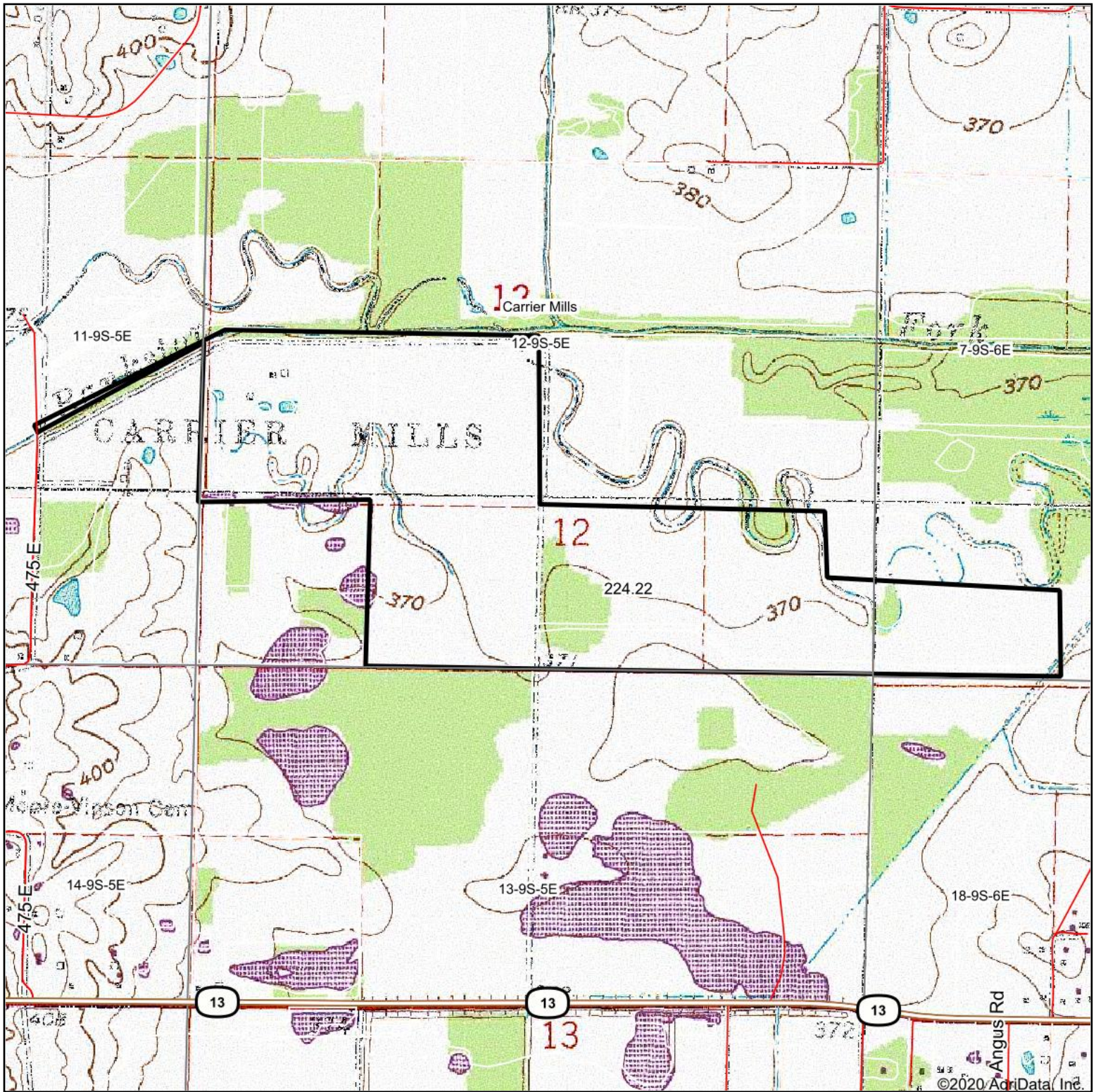
Maps Provided By:



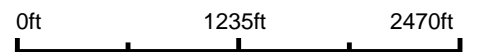
© AgriData, Inc. 2020 www.AgriDataInc.com

Field borders provided by Farm Service Agency as of 5/21/2008.

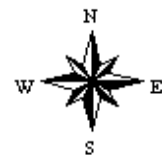
Topography Map



map center: 37° 44' 56.04, -88° 36' 20.82



12-9S-5E
Saline County
Illinois



10/5/2020

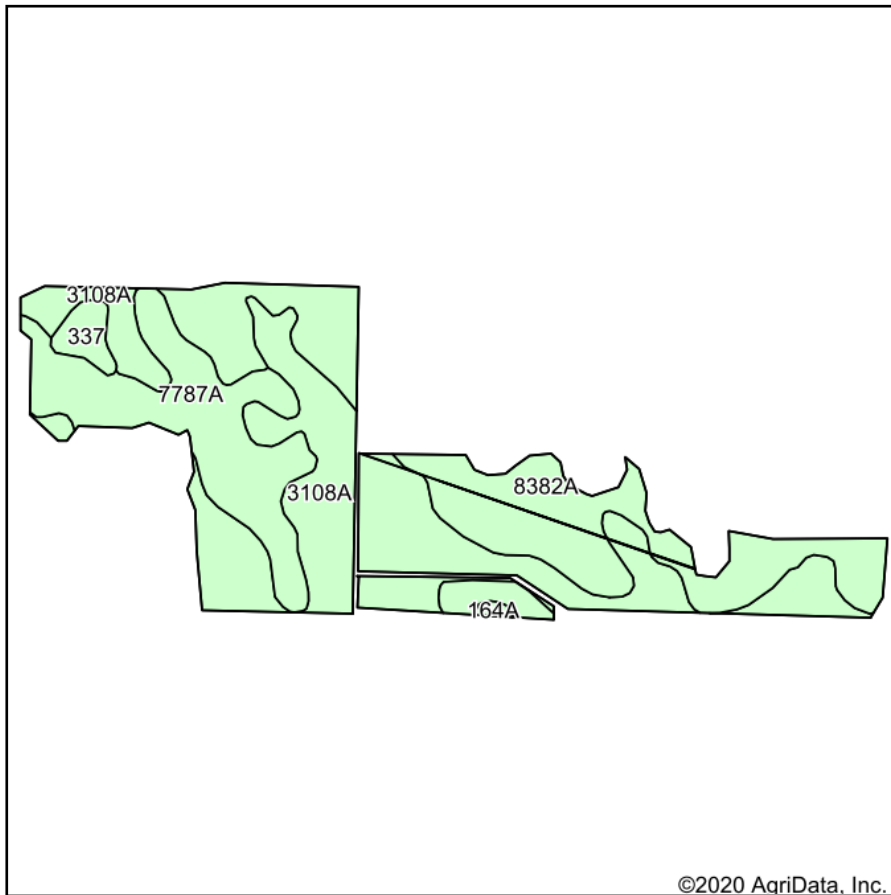


Maps Provided By:

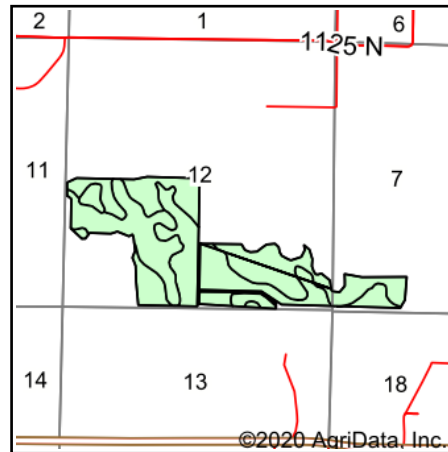


© AgriData, Inc. 2020 www.AgrIDataInc.com

Soils Map



Soils data provided by USDA and NRCS.



State: **Illinois**
 County: **Saline**
 Location: **12-9S-5E**
 Township: **Carrier Mills**
 Acres: **188.82**
 Date: **10/4/2020**



Area Symbol: IL165. Soil Area Version: 15									
Code	Soil Description	Acres	Percent of field	Il. State Productivity Index Legend	Corn Bu/A	Soybeans Bu/A	Wheat Bu/A	Grass-legume hay, T/A	Crop productivity index for optimum management
3108A	Bonnie silt loam, 0 to 2 percent slopes, frequently flooded	79.12	41.9%		149	49	59	4.64	111
8382A	Belknap silt loam, 0 to 2 percent slopes, occasionally flooded	60.32	31.9%		156	52	63	4.89	117
7787A	Banlic silt loam, 0 to 2 percent slopes, rarely flooded	40.48	21.4%		142	47	56	4.64	106
337	Creal silt loam	8.27	4.4%		151	47	59	0.00	110
164A	Stoy silt loam, 0 to 2 percent slopes	0.63	0.3%		145	47	58	4.64	109
Weighted Average					149.8	49.4	59.6	4.52	111.8

Table: Optimum Crop Productivity Ratings for Illinois Soil by K.R. Olson and J.M. Lang, Office of Research, ACES, University of Illinois at Champaign-Urbana. Version: 1/2/2012 Amended Table S2 B811

Crop yields and productivity indices for optimum management (B811) are maintained at the following NRES web site: <http://soilproductivity.nres.illinois.edu/>

** Indexes adjusted for slope and erosion according to Bulletin 811 Table S3

e Soils in the well drained group were not rated for grass-legume and are shown with a zero "0".

*c: Using Capabilities Class Dominant Condition Aggregation Method

Soils data provided by USDA and NRCS. Soils data provided by University of Illinois at Champaign-Urbana.