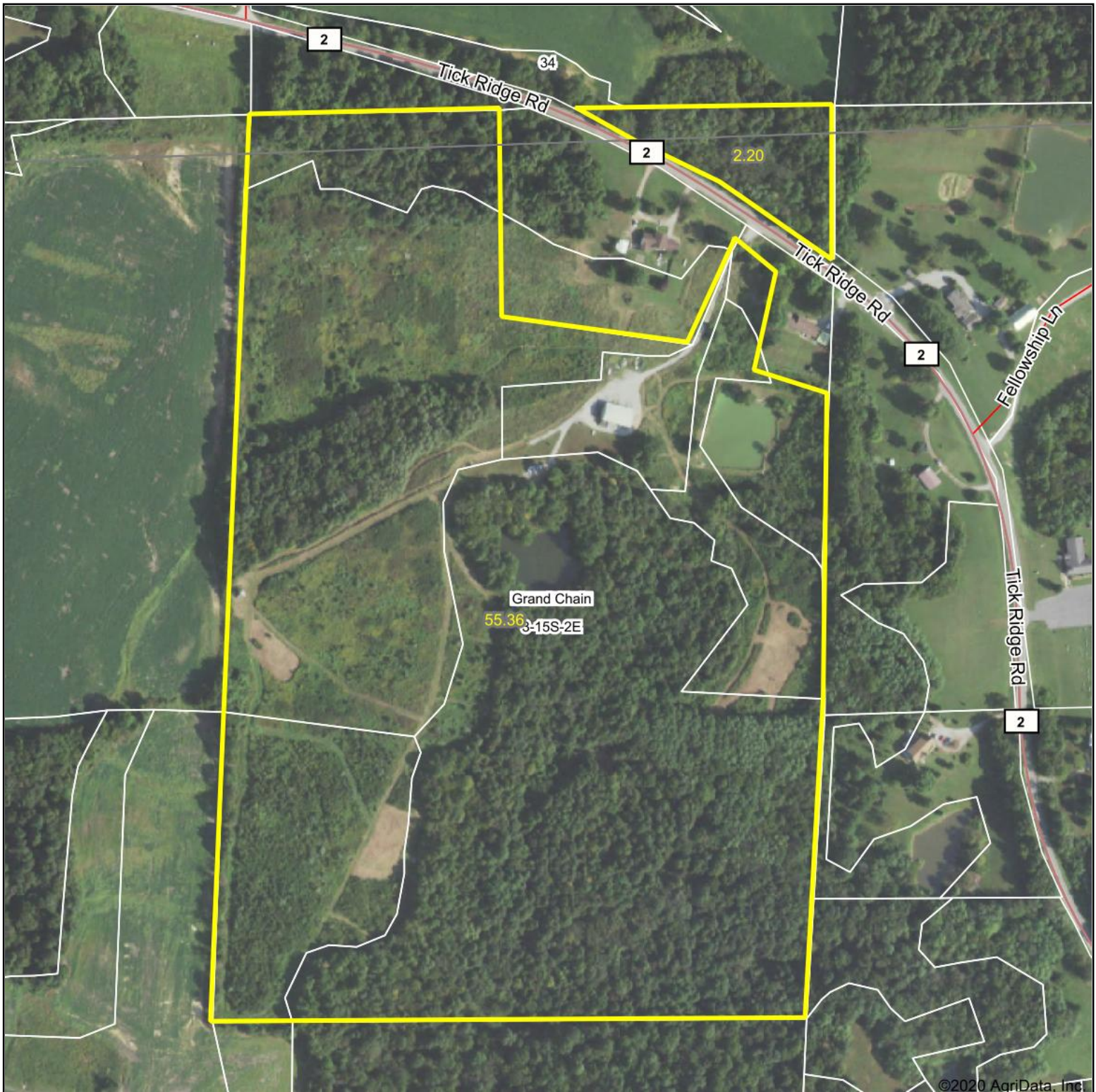


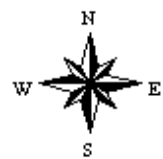
Aerial Map



Map Center: 37° 14' 32.12, -88° 58' 42.26

0ft 353ft 707ft

3-15S-2E
Pulaski County
Illinois



9/22/2020



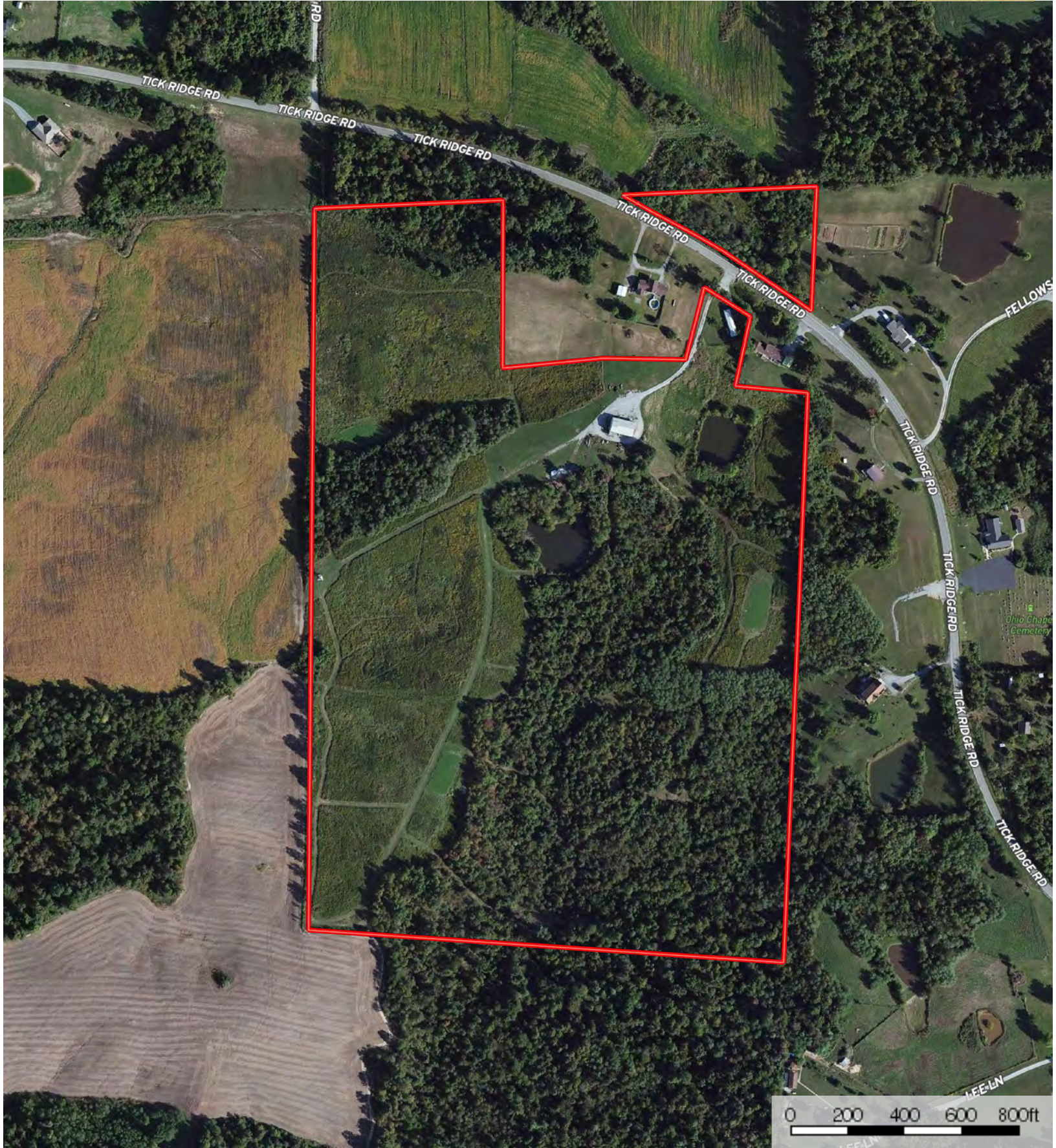
Maps Provided By:



© AgriData, Inc. 2020

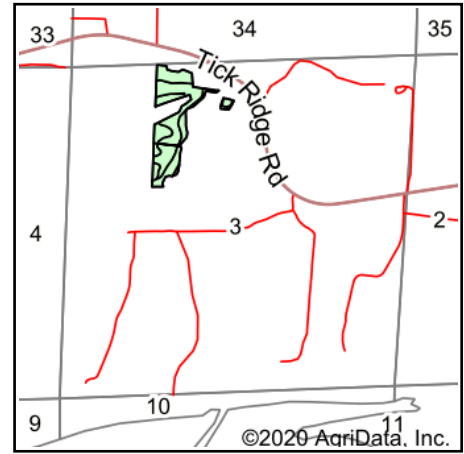
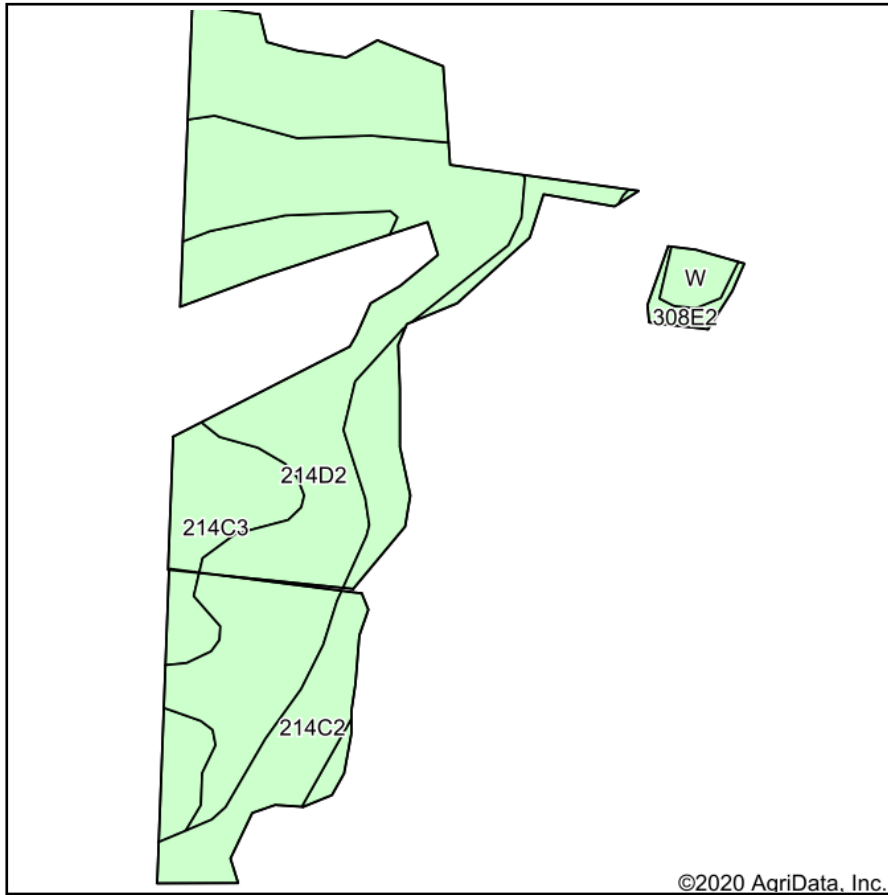
www.AgriDataInc.com

Field borders provided by Farm Service Agency as of 5/21/2008.



Boundary

Soils Map



State: **Illinois**
 County: **Pulaski**
 Location: **3-15S-2E**
 Township: **Grand Chain**
 Acres: **19.78**
 Date: **9/22/2020**



Maps Provided By:



Area Symbol: IL153, Soil Area Version: 14

Code	Soil Description	Acres	Percent of field	Il. State Productivity Index Legend	Corn Bu/A	Soybeans Bu/A	Wheat Bu/A	Crop productivity index for optimum management
**214D2	Hosmer silt loam, 10 to 18 percent slopes, eroded	9.11	46.1%		**118	**39	**49	**88
**214C2	Hosmer silt loam, 5 to 10 percent slopes, eroded	6.21	31.4%		**126	**41	**52	**95
**214C3	Hosmer silt loam, 5 to 10 percent slopes, severely eroded	3.65	18.5%		**104	**34	**43	**78
**308E2	Alford silt loam, 18 to 25 percent slopes, eroded	0.42	2.1%		**125	**38	**49	**91
W	Water	0.39	2.0%					
Weighted Average					115.8	37.9	47.9	86.7

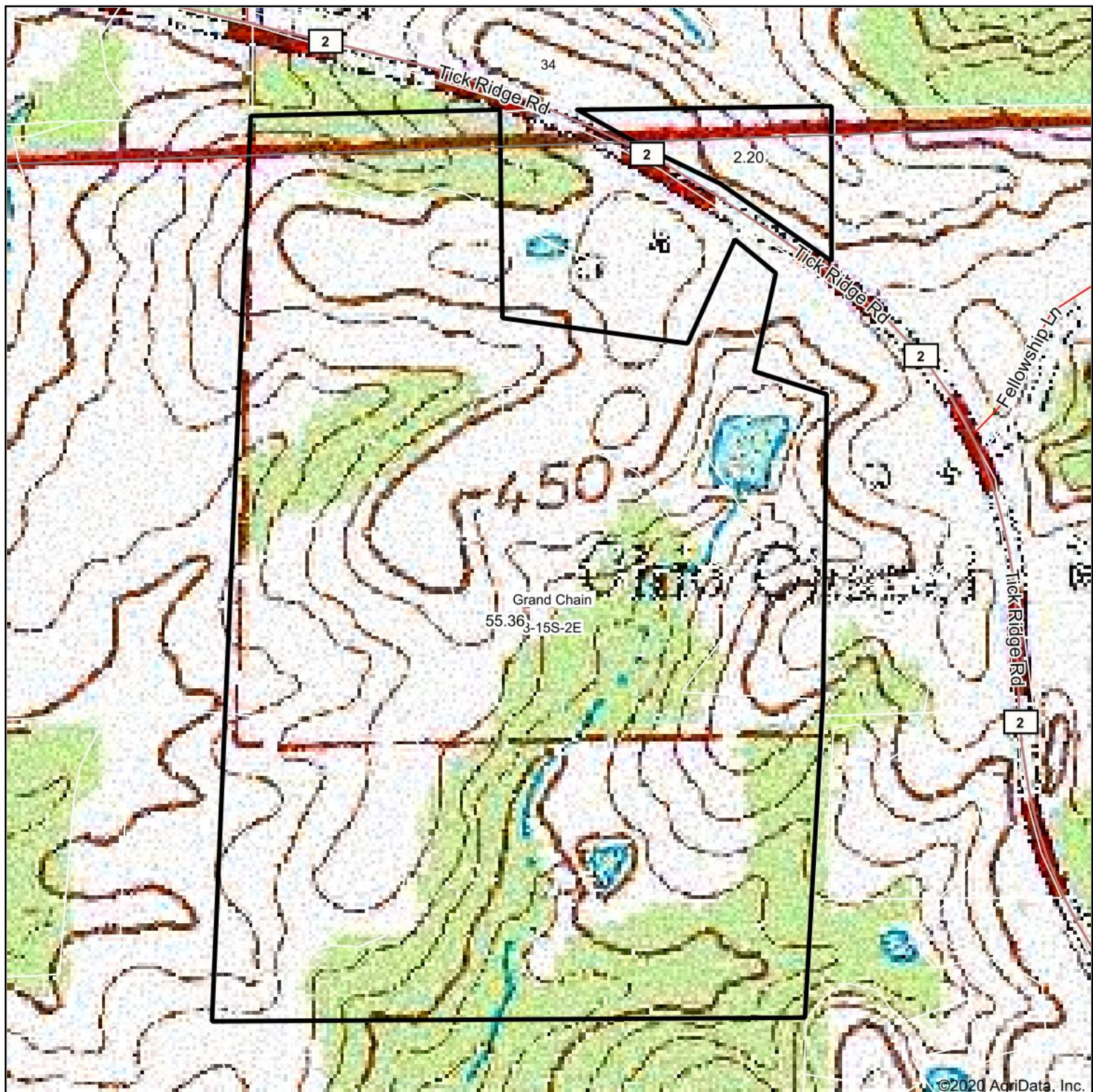
Table: Optimum Crop Productivity Ratings for Illinois Soil by K.R. Olson and J.M. Lang, Office of Research, ACES, University of Illinois at Champaign-Urbana. Version: 1/2/2012 Amended Table S2 B811

Crop yields and productivity indices for optimum management (B811) are maintained at the following NRES web site: <http://soilproductivity.nres.illinois.edu/>

** Indexes adjusted for slope and erosion according to Bulletin 811 Table S3

Soils data provided by USDA and NRCS. Soils data provided by University of Illinois at Champaign-Urbana.

Topography Map



map center: 37° 14' 32.12, -88° 58' 42.26

0ft 353ft 707ft



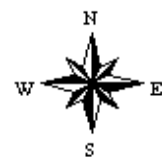
Maps Provided By:



© AgriData, Inc. 2020

www.AgriDataInc.com

3-15S-2E
Pulaski County
Illinois



9/22/2020