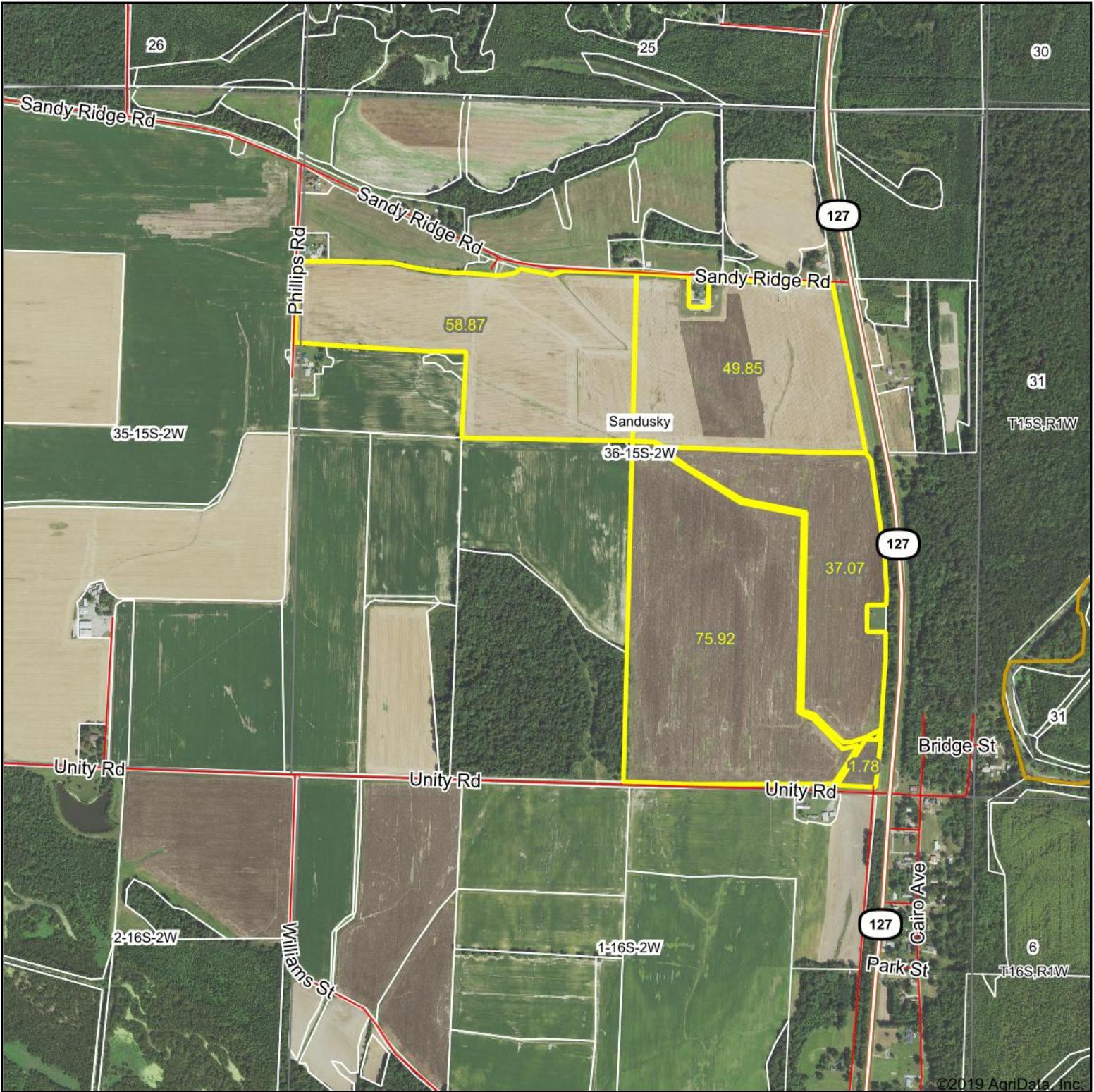
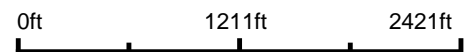


Aerial Map



©2019 AgriData, Inc.

Map Center: 37° 9' 49.07, -89° 16' 54.63



36-15S-2W
Alexander County
Illinois

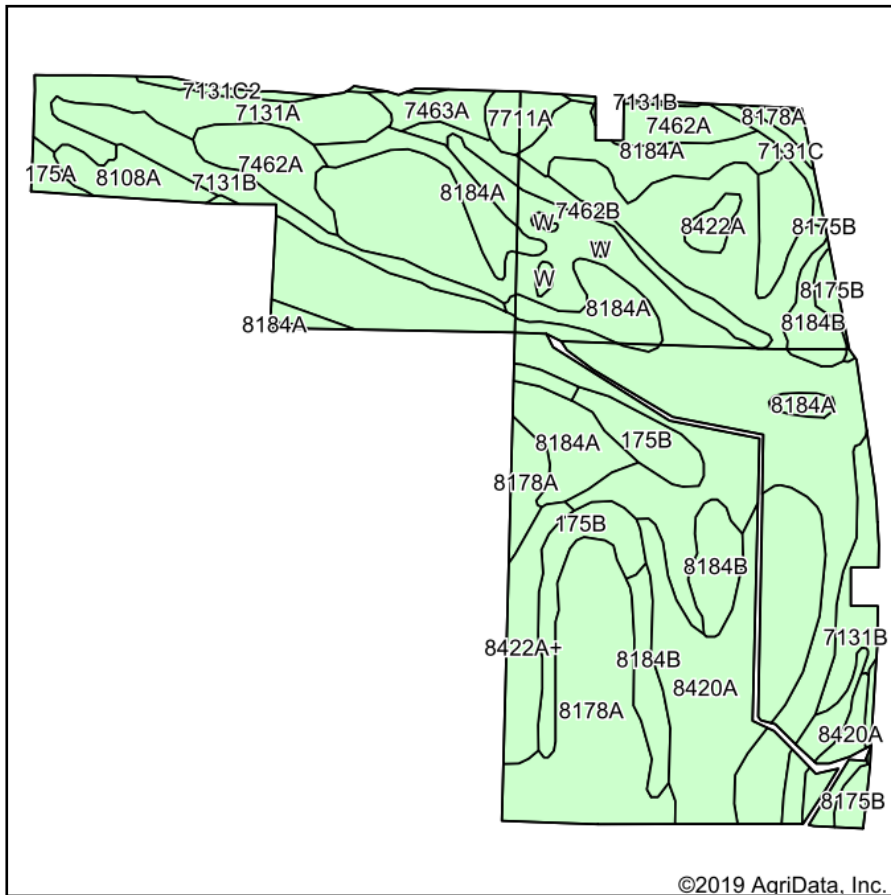


5/2/2020

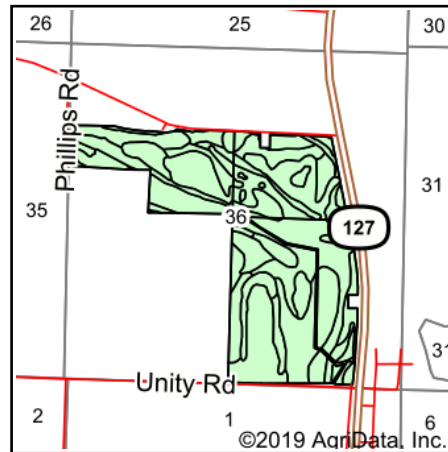
Maps Provided By:
 **surety**
CUSTOMIZED ONLINE MAPPING
© AgriData, Inc. 2019 www.AgridataInc.com

Field borders provided by Farm Service Agency as of 5/21/2008.

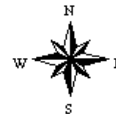
Soils Map



Soils data provided by USDA and NRCS.



State: **Illinois**
 County: **Alexander**
 Location: **36-15S-2W**
 Township: **Sandusky**
 Acres: **223.49**
 Date: **5/2/2020**



Area Symbol: IL003. Soil Area Version: 16								
Code	Soil Description	Acres	Percent of field	Il. State Productivity Index Legend	Corn Bu/A	Soybeans Bu/A	Wheat Bu/A	Crop productivity index for optimum management
8178A	Ruark fine sandy loam, 0 to 2 percent slopes, occasionally flooded	96.93	43.4%		130	45	55	99
8420A	Piopolis silty clay loam, 0 to 2 percent slopes, occasionally flooded	24.51	11.0%		142	48	59	108
8184A	Roby fine sandy loam, 0 to 2 percent slopes, occasionally flooded	21.24	9.5%		145	50	58	111
7131B	Alvin fine sandy loam, 2 to 5 percent slopes, rarely flooded	14.95	6.7%		150	49	59	111
8184B	Roby fine sandy loam, 2 to 5 percent slopes, occasionally flooded	10.90	4.9%		145	50	58	111
7131A	Alvin fine sandy loam, 0 to 2 percent slopes, rarely flooded	9.80	4.4%		150	49	59	111
**175B	Lamont fine sandy loam, 2 to 5 percent slopes	8.64	3.9%		**130	**44	**53	**97
7462A	Sciotoville silt loam, 0 to 2 percent slopes, rarely flooded	8.12	3.6%		140	47	59	105
8422A+	Cape silt loam, overwash, 0 to 2 percent slopes, occasionally flooded	5.57	2.5%		136	46	58	103
7462B	Sciotoville silt loam, 2 to 5 percent slopes, rarely flooded	4.36	2.0%		140	47	59	105
8108A	Bonnie silt loam, 0 to 2 percent slopes, occasionally flooded	3.60	1.6%		149	49	59	111
7463A	Wheeling silt loam, 0 to 2 percent slopes, rarely flooded	2.53	1.1%		146	48	59	108
7711A	Hatfield silt loam, 0 to 2 percent slopes, rarely flooded	2.43	1.1%		148	49	63	113
7131D2	Alvin fine sandy loam, 10 to 18 percent slopes, eroded, rarely flooded	2.36	1.1%		150	49	59	111
8175B	Lamont fine sandy loam, 2 to 7 percent slopes, occasionally flooded	2.09	0.9%		131	44	54	98



8422A	Cape silty clay loam, 0 to 2 percent slopes, occasionally flooded	1.33	0.6%		136	46	58	103
7131C	Alvin fine sandy loam, 5 to 10 percent slopes, rarely flooded	1.29	0.6%		150	49	59	111
7131C2	Alvin fine sandy loam, 5 to 10 percent slopes, eroded, rarely flooded	1.16	0.5%		150	49	59	111
175A	Lamont fine sandy loam, 0 to 2 percent slopes	1.06	0.5%		131	44	54	98
W	Water	0.62	0.3%					
Weighted Average					137.2	46.7	56.7	103.8

Table: Optimum Crop Productivity Ratings for Illinois Soil by K.R. Olson and J.M. Lang, Office of Research, ACES, University of Illinois at Champaign-Urbana. Version: 1/2/2012 Amended Table S2 B811

Crop yields and productivity indices for optimum management (B811) are maintained at the following NRES web site: <http://soilproductivity.nres.illinois.edu/>

** Indexes adjusted for slope and erosion according to Bulletin 811 Table S3

Soils data provided by USDA and NRCS. Soils data provided by University of Illinois at Champaign-Urbana.