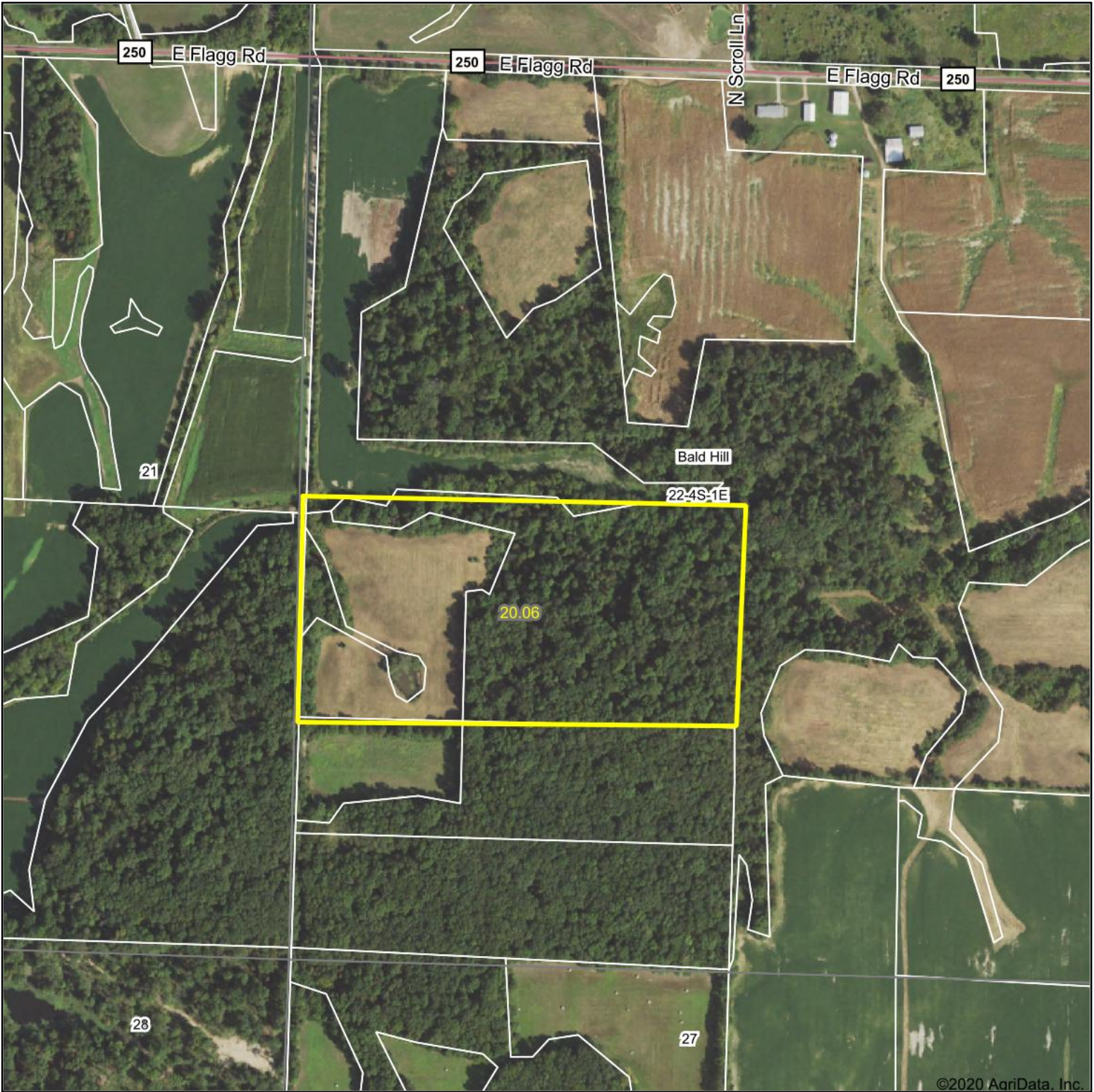


# Aerial Map

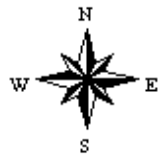


©2020 AgriData, Inc.

Map Center: 38° 9' 25.59, -89° 5' 33.08



**22-4S-1E**  
**Jefferson County**  
**Illinois**



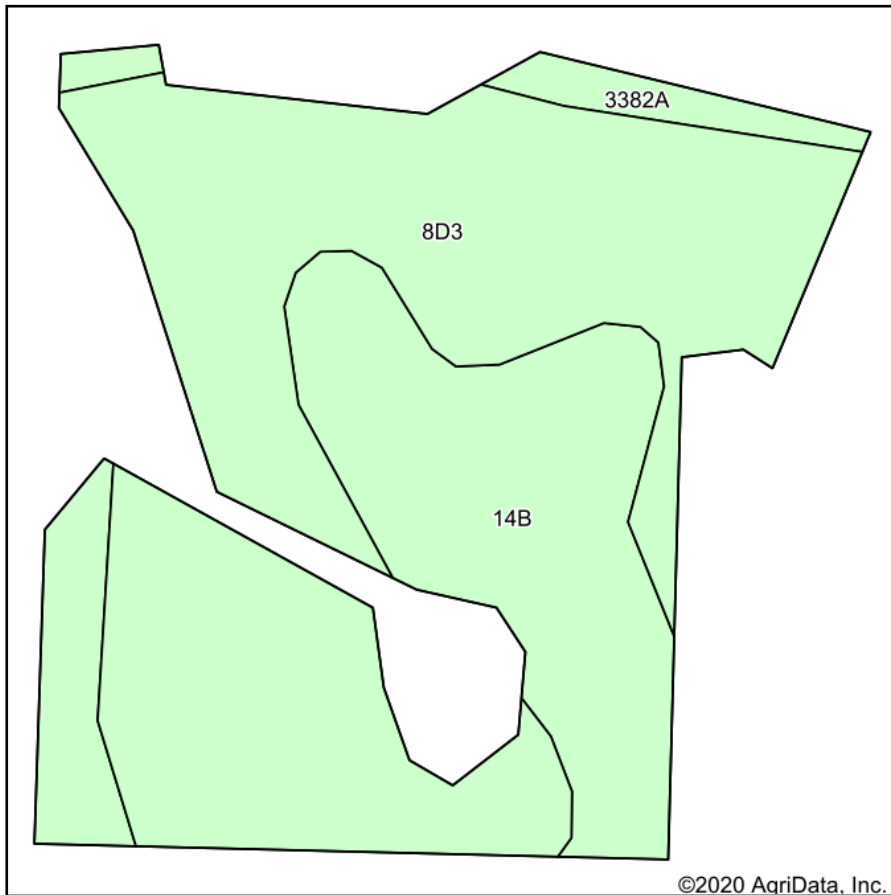
9/16/2020



Maps Provided By:  
 **surety**  
CUSTOMIZED ONLINE MAPPING  
© AgriData, Inc. 2020      www.AgriDataInc.com

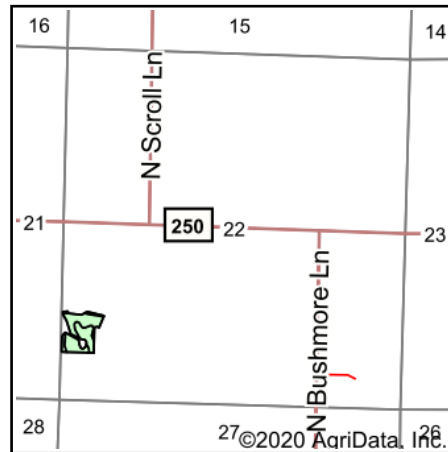
Field borders provided by Farm Service Agency as of 5/21/2008.

# Soils Map



©2020 AgriData, Inc.

Soils data provided by USDA and NRCS.



State: **Illinois**  
 County: **Jefferson**  
 Location: **22-4S-1E**  
 Township: **Bald Hill**  
 Acres: **6.19**  
 Date: **9/16/2020**



Maps Provided By:



© AgriData, Inc. 2020

www.AgriDataInc.com



Area Symbol: IL081, Soil Area Version: 13									
Code	Soil Description	Acres	Percent of field	Il. State Productivity Index Legend	Corn Bu/A	Soybeans Bu/A	Wheat Bu/A	Grass-legume & hay, T/A	Crop productivity index for optimum management
**8D3	Hickory clay loam, 10 to 18 percent slopes, severely eroded	3.99	64.5%		**98	**33	**40	0.00	**75
**14B	Ava silt loam, 2 to 5 percent slopes	1.98	32.0%		**134	**44	**54	0.00	**99
3382A	Belknap silt loam, 0 to 2 percent slopes, frequently flooded	0.22	3.6%		156	52	63	4.89	117
<b>Weighted Average</b>					<b>111.6</b>	<b>37.2</b>	<b>45.3</b>	<b>0.17</b>	<b>84.2</b>

**Table: Optimum Crop Productivity Ratings for Illinois Soil by K.R. Olson and J.M. Lang, Office of Research, ACES, University of Illinois at Champaign-Urbana.** Version: 1/2/2012 Amended Table S2 B811

Crop yields and productivity indices for optimum management (B811) are maintained at the following NRES web site: <http://soilproductivity.nres.illinois.edu/>

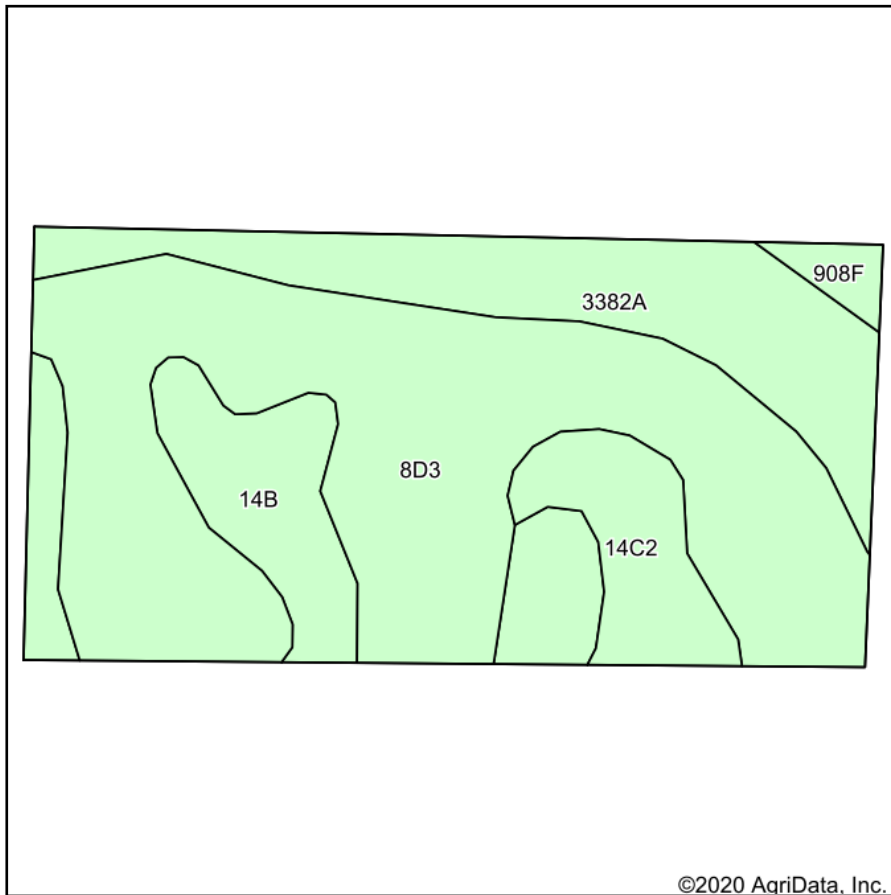
\*\* Indexes adjusted for slope and erosion according to Bulletin 811 Table S3

e Soils in the well drained group were not rated for grass-legume and are shown with a zero "0".

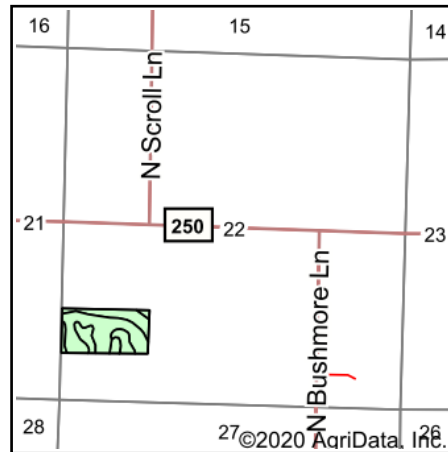
\*c: Using Capabilities Class Dominant Condition Aggregation Method

Soils data provided by USDA and NRCS. Soils data provided by University of Illinois at Champaign-Urbana.

# Soils Map



Soils data provided by USDA and NRCS.



State: **Illinois**  
 County: **Jefferson**  
 Location: **22-4S-1E**  
 Township: **Bald Hill**  
 Acres: **20.06**  
 Date: **9/16/2020**



Maps Provided By:



© AgriData, Inc. 2020

www.AgriDataInc.com



Area Symbol: IL081. Soil Area Version: 13									
Code	Soil Description	Acres	Percent of field	Il. State Productivity Index Legend	Corn Bu/A	Soybeans Bu/A	Wheat Bu/A	Grass-legume hay, T/A	Crop productivity index for optimum management
**8D3	Hickory clay loam, 10 to 18 percent slopes, severely eroded	10.97	54.7%		**98	**33	**40	0.00	**75
3382A	Belknap silt loam, 0 to 2 percent slopes, frequently flooded	3.94	19.6%		156	52	63	4.89	117
**14B	Ava silt loam, 2 to 5 percent slopes	3.22	16.1%		**134	**44	**54	0.00	**99
**14C2	Ava silt loam, 5 to 10 percent slopes, eroded	1.62	8.1%		**122	**40	**50	0.00	**90
**908F	Hickory-Kell silt loams, 18 to 35 percent slopes	0.31	1.5%		**87	**29	**34	**2.81	**67
<b>Weighted Average</b>					<b>116.9</b>	<b>39</b>	<b>47.5</b>	<b>1.00</b>	<b>88.2</b>

**Table: Optimum Crop Productivity Ratings for Illinois Soil by K.R. Olson and J.M. Lang, Office of Research, ACES, University of Illinois at Champaign-Urbana.** Version: 1/2/2012 Amended Table S2 B811

Crop yields and productivity indices for optimum management (B811) are maintained at the following NRES web site: <http://soilproductivity.nres.illinois.edu/>

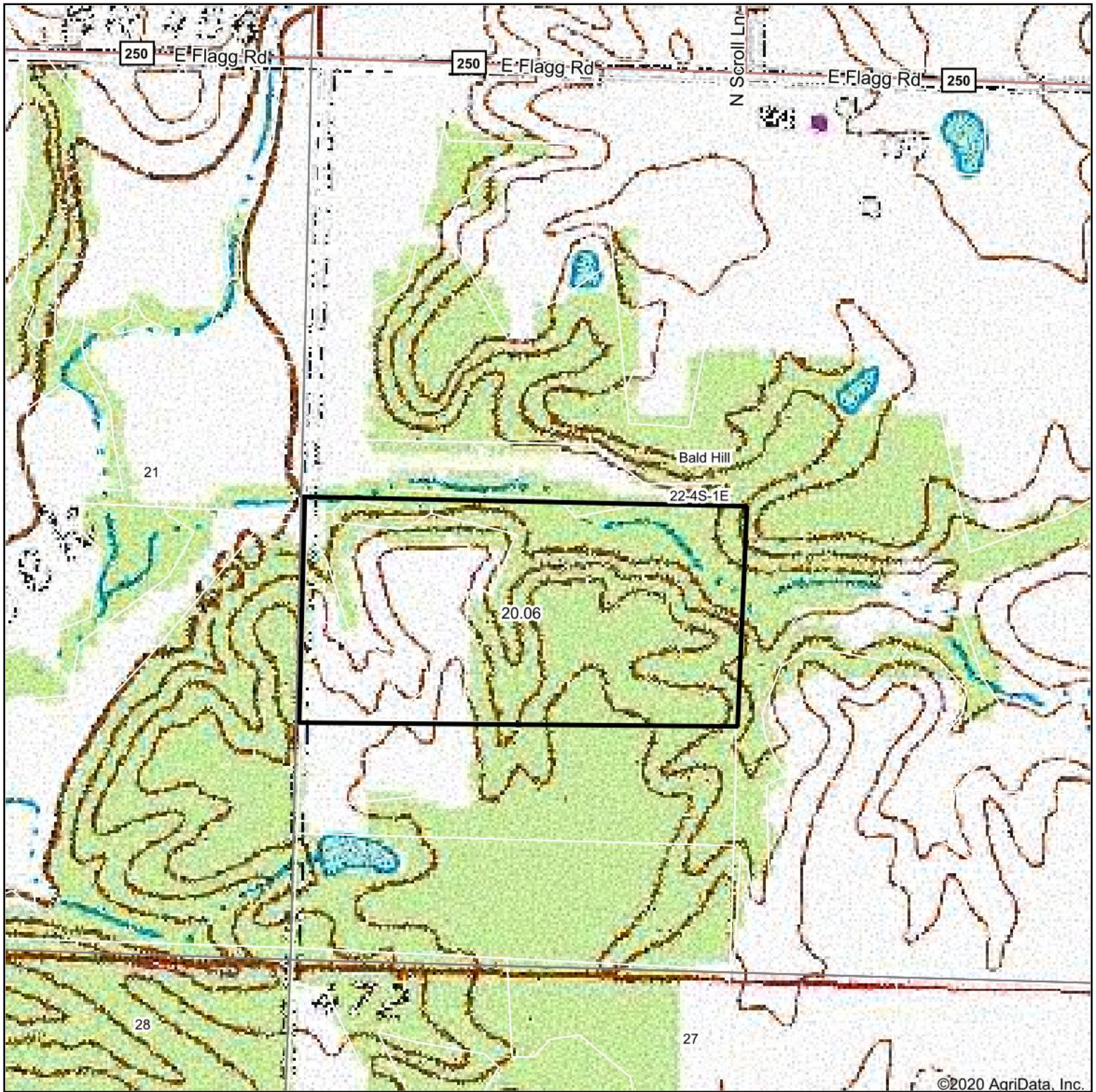
\*\* Indexes adjusted for slope and erosion according to Bulletin 811 Table S3

e Soils in the well drained group were not rated for grass-legume and are shown with a zero "0".

\*c: Using Capabilities Class Dominant Condition Aggregation Method

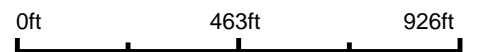
Soils data provided by USDA and NRCS. Soils data provided by University of Illinois at Champaign-Urbana.

# Topography Map

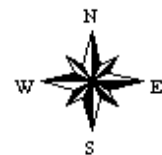


©2020 AgriData, Inc.

map center: 38° 9' 25.59, -89° 5' 33.08



**22-4S-1E**  
**Jefferson County**  
**Illinois**



9/16/2020



Maps Provided By:



© AgriData, Inc. 2020

www.AgridataInc.com