

Aerial Map



©2020 AgriData, Inc.

Map Center: 38° 50' 39.24, -89° 12' 50.12



29-5N-1W
Fayette County
Illinois



© AgriData, Inc. 2020 www.AgriDataInc.com

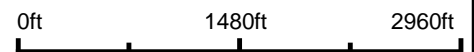
9/8/2020

Field borders provided by Farm Service Agency as of 5/21/2008.

Aerial Map



Map Center: 38° 50' 39.24, -89° 12' 50.1



29-5N-1W
Fayette County
Illinois

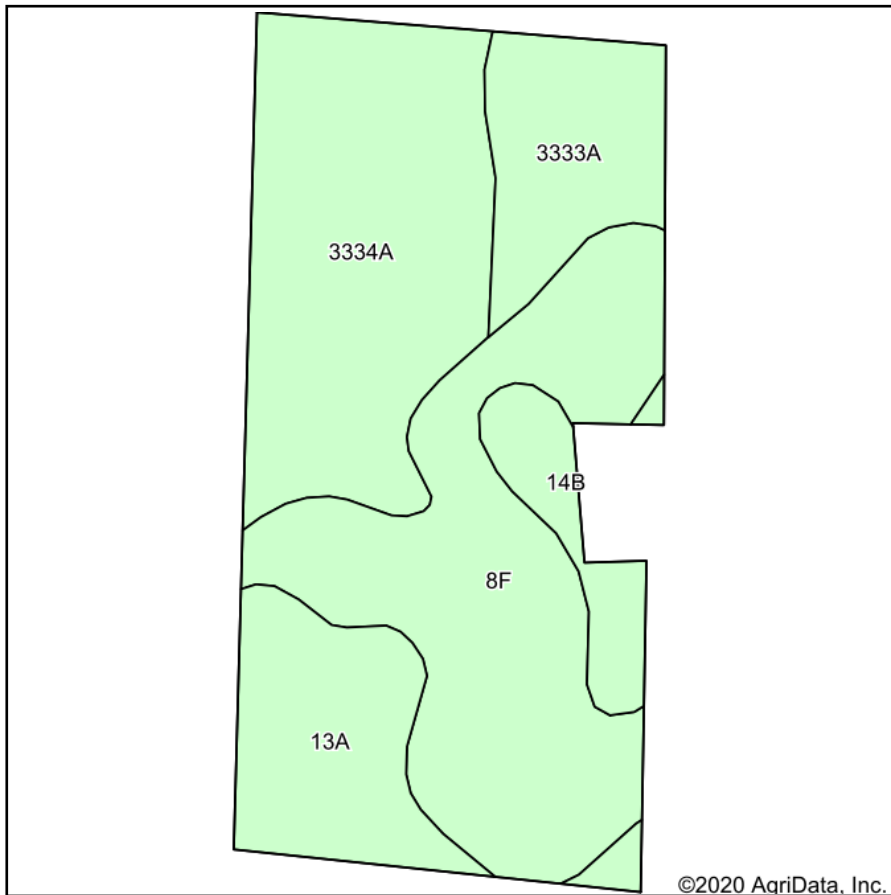


9/8/2020

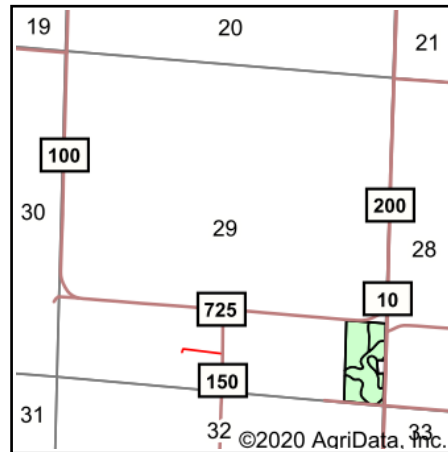
Maps Provided By:
 surety
CUSTOMIZED ONLINE MAPPING
© AgriData, Inc. 2020 www.AgriDataInc.com

Field borders provided by Farm Service Agency as of 5/21/2008.

Soils Map



Soils data provided by USDA and NRCS.



State: **Illinois**
 County: **Fayette**
 Location: **29-5N-1W**
 Township: **Seminary**
 Acres: **18.95**
 Date: **9/8/2020**



Area Symbol: IL051, Soil Area Version: 16									
Code	Soil Description	Acres	Percent of field	Il. State Productivity Index Legend	Corn Bu/A	Soybeans Bu/A	Wheat Bu/A	Grass-legume hay, T/A	Crop productivity index for optimum management
**8F	Hickory silt loam, 18 to 35 percent slopes	6.78	35.8%		**86	**29	**35	0.00	**65
3334A	Birds silt loam, 0 to 2 percent slopes, frequently flooded	6.02	31.8%		157	51	61	0.00	117
13A	Bluford silt loam, 0 to 2 percent slopes	2.77	14.6%		136	44	55	3.39	101
3333A	Wakeland silt loam, 0 to 2 percent slopes, frequently flooded	2.22	11.7%		174	56	68	5.14	128
**14B	Ava silt loam, 2 to 5 percent slopes	1.16	6.1%		**134	**44	**54	0.00	**99
Weighted Average					129.1	42.3	51.2	1.10	96.2

Table: Optimum Crop Productivity Ratings for Illinois Soil by K.R. Olson and J.M. Lang, Office of Research, ACES, University of Illinois at Champaign-Urbana. Version: 1/2/2012 Amended Table S2 B811

Crop yields and productivity indices for optimum management (B811) are maintained at the following NRES web site: <http://soilproductivity.nres.illinois.edu/>

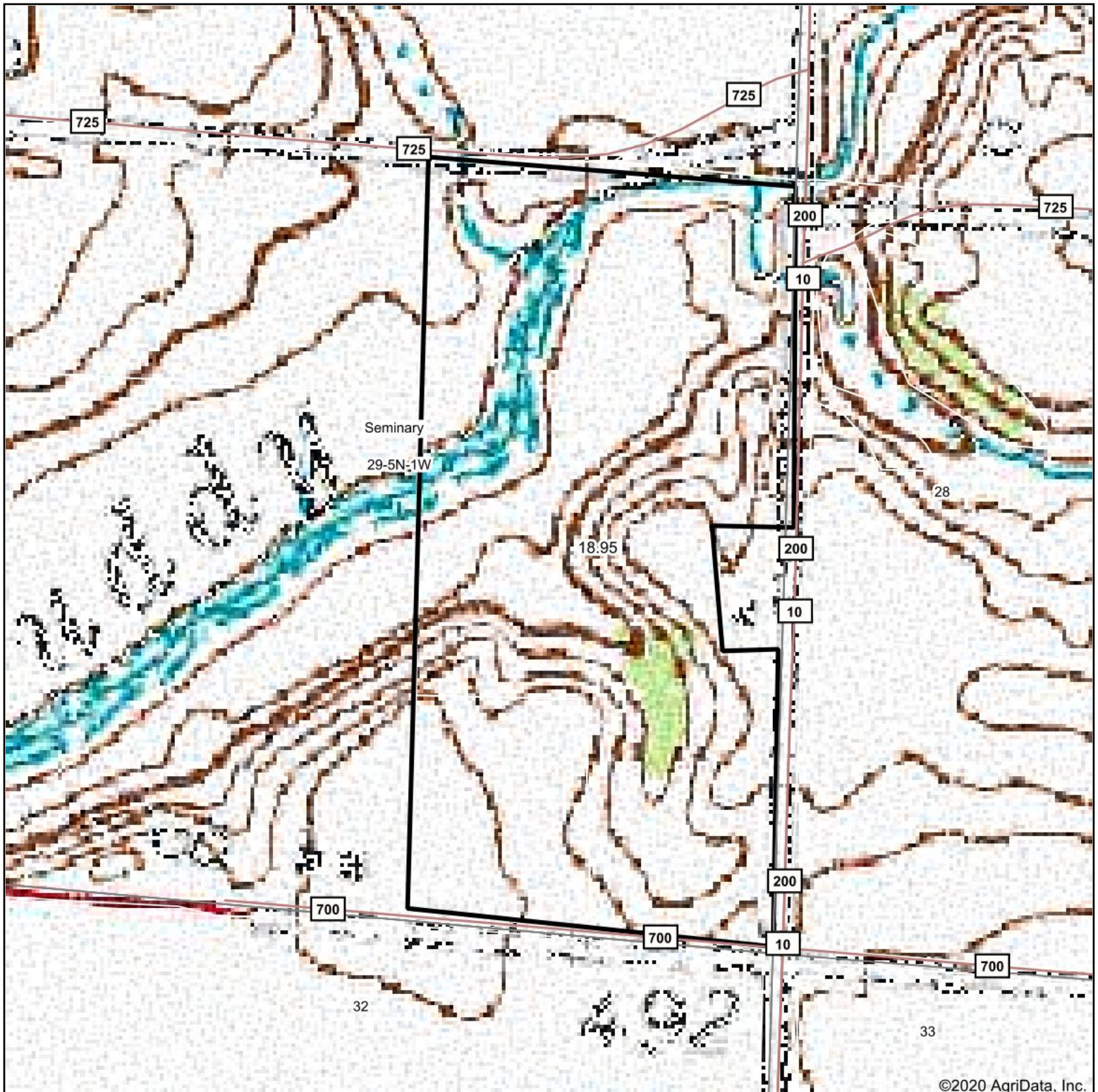
** Indexes adjusted for slope and erosion according to Bulletin 811 Table S3

e Soils in the well drained group were not rated for grass-legume and are shown with a zero "0".

*c: Using Capabilities Class Dominant Condition Aggregation Method

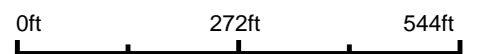
Soils data provided by USDA and NRCS. Soils data provided by University of Illinois at Champaign-Urbana.

Topography Map

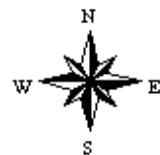


©2020 AgriData, Inc.

map center: 38° 50' 39.24, -89° 12' 50.12



29-5N-1W
Fayette County
Illinois



9/8/2020