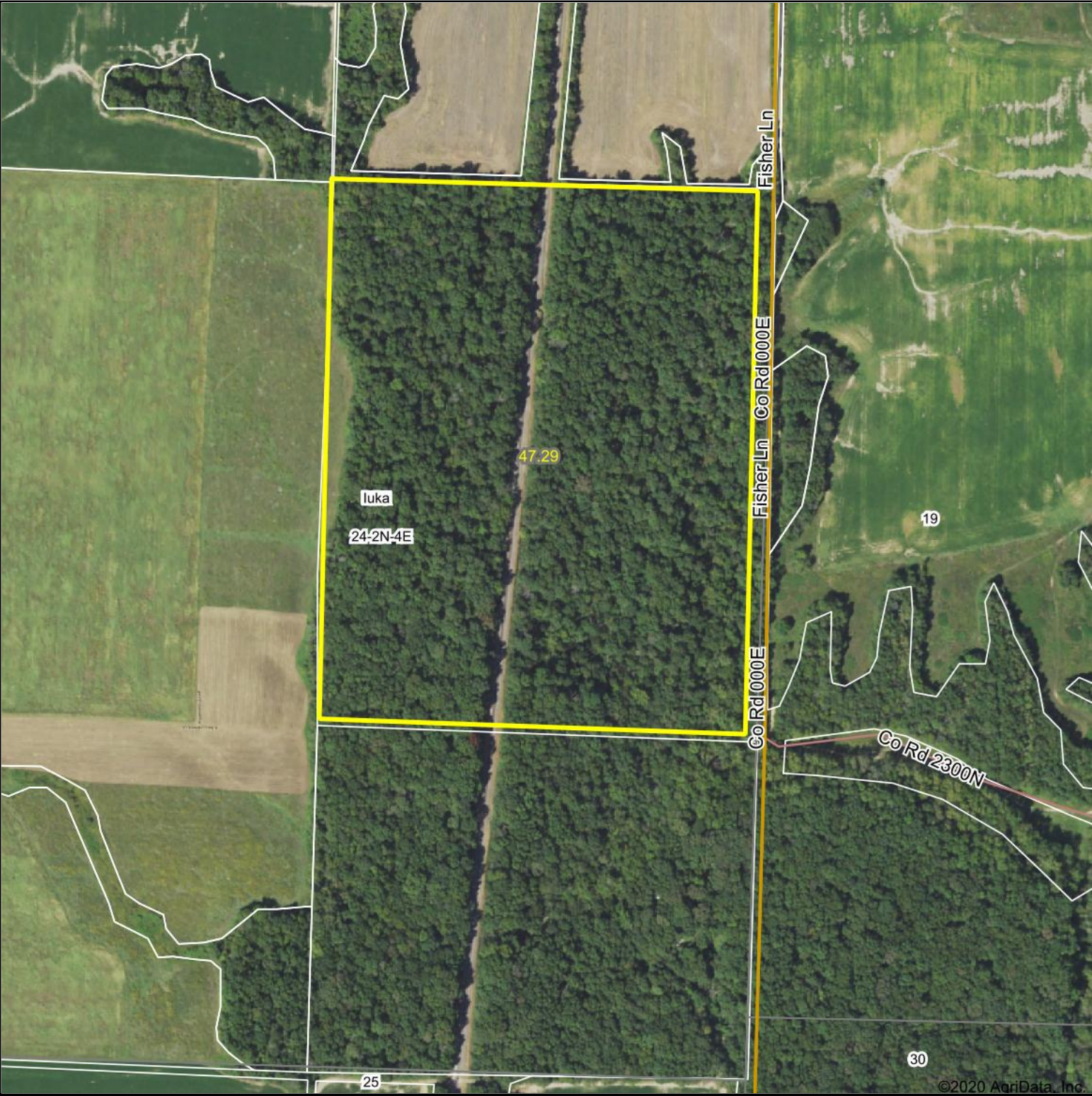


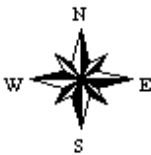
Aerial Map



Map Center: 38° 35' 44.09, -88° 42' 2.71



24-2N-4E
Marion County
Illinois



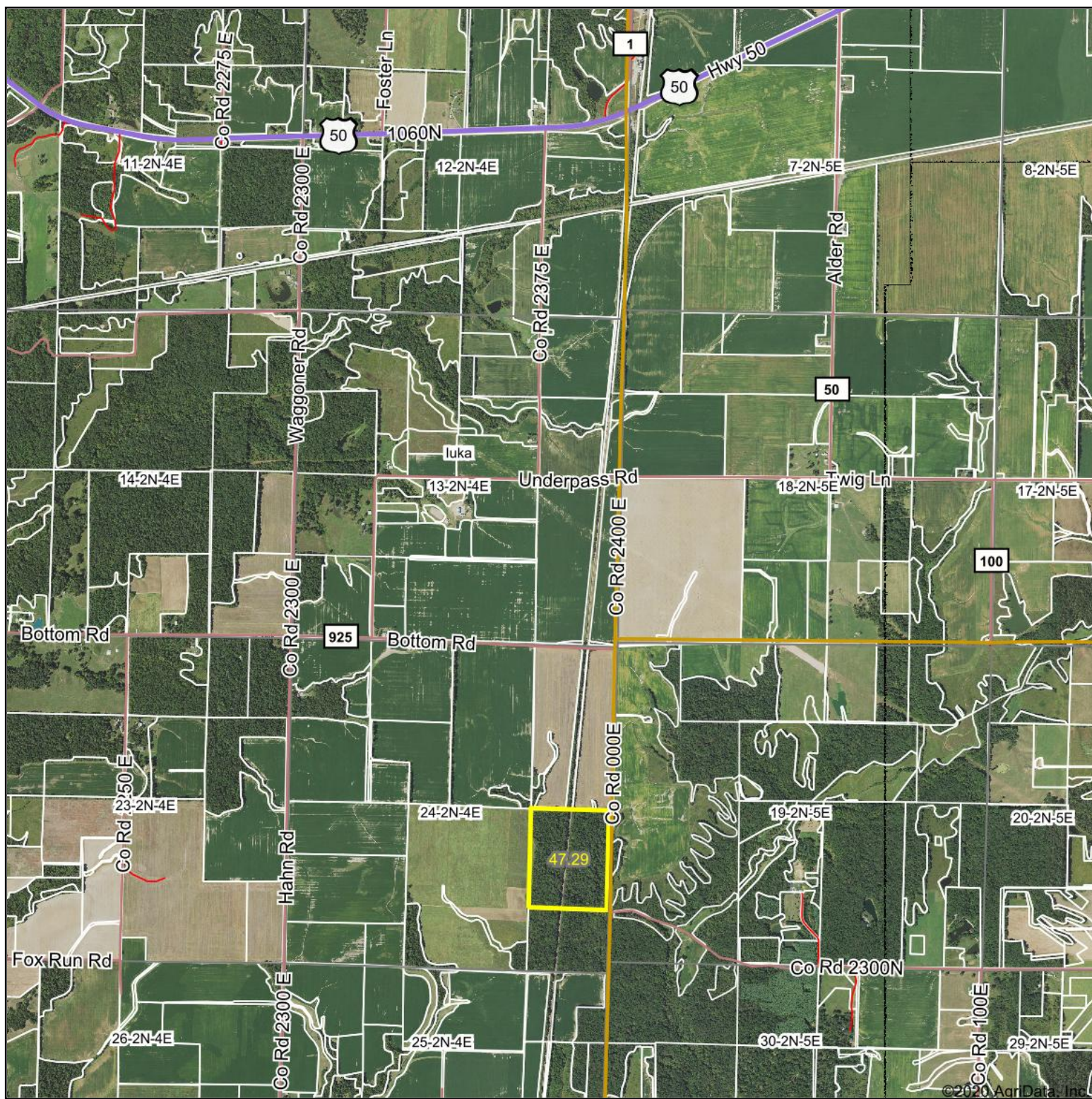
9/22/2020



Maps Provided By:
 **surety**
CUSTOMIZED ONLINE MAPPING
© AgriData, Inc. 2020 www.AgriDataInc.com

Field borders provided by Farm Service Agency as of 5/21/2008.

Aerial Map

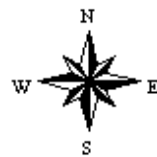


Map Center: 38° 36' 36.03, -88° 42' 7.89

0ft 2538ft 5077ft



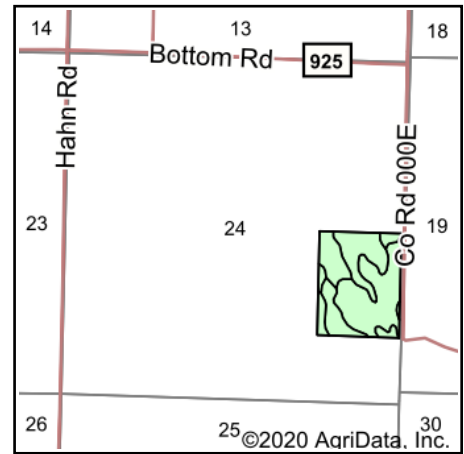
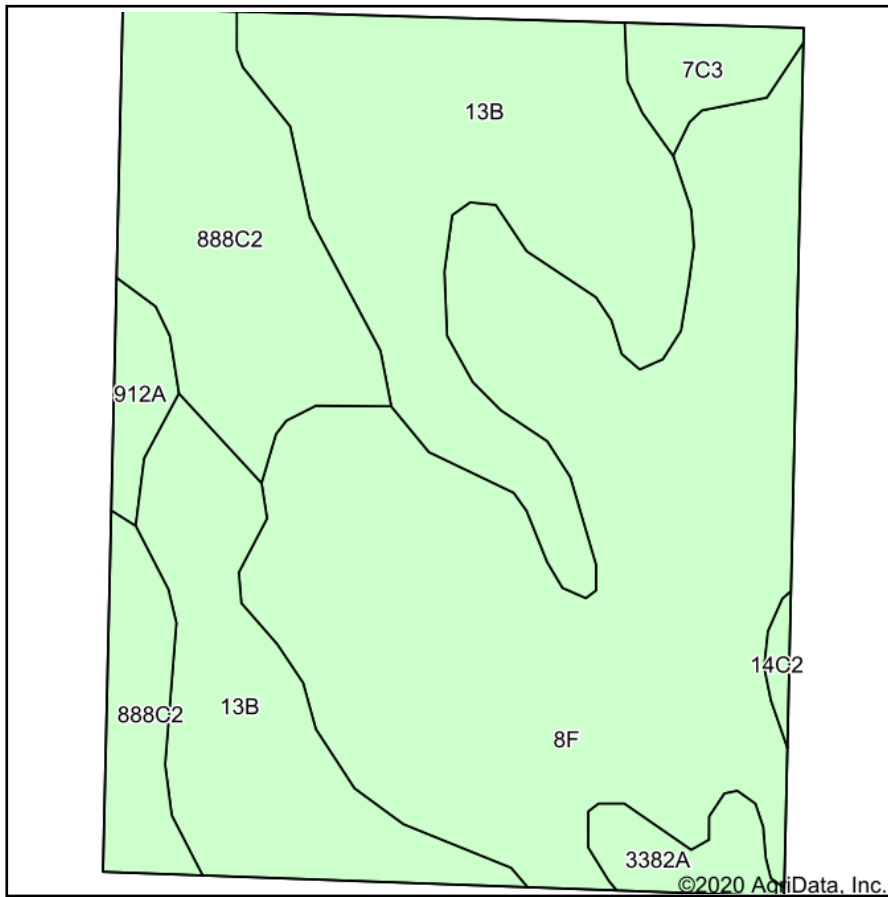
13-2N-4E
Marion County
Illinois



9/22/2020

Field borders provided by Farm Service Agency as of 5/21/2008.

Soils Map



State: **Illinois**
 County: **Marion**
 Location: **24-2N-4E**
 Township: **Iuka**
 Acres: **47.29**
 Date: **9/22/2020**



Maps Provided By:
surety
 CUSTOMIZED ONLINE MAPPING
 © AgriData, Inc. 2020 www.AgriDataInc.com



Area Symbol: IL121. Soil Area Version: 17									
Code	Soil Description	Acres	Percent of field	Il. State Productivity Index Legend	Corn Bu/A	Soybeans Bu/A	Wheat Bu/A	Grass-legume e hay, T/A	Crop productivity index for optimum management
**8F	Hickory silt loam, 18 to 35 percent slopes	21.10	44.6%		**86	**29	**35	0.00	**65
**13B	Bluford silt loam, 2 to 5 percent slopes	15.21	32.2%		**135	**44	**54	**3.36	**100
**888C2	Passport-Grantfork silt loams, 5 to 10 percent slopes, eroded	7.76	16.4%		**108	**37	**45	**3.41	**85
**7C3	Atlas silty clay loam, 5 to 10 percent slopes, severely eroded	1.14	2.4%		**87	**30	**34	**2.60	**67
3382A	Belknap silt loam, 0 to 2 percent slopes, frequently flooded	1.06	2.2%		156	52	63	4.89	117
912A	Hoyleton-Darmstadt silt loams, 0 to 2 percent slopes	0.82	1.7%		134	45	52	4.24	103
**14C2	Ava silt loam, 5 to 10 percent slopes, eroded	0.20	0.4%		**122	**40	**50	0.00	**90
Weighted Average					107.9	36	43.7	1.89	81.5

Table: Optimum Crop Productivity Ratings for Illinois Soil by K.R. Olson and J.M. Lang, Office of Research, ACES, University of Illinois at Champaign-Urbana. Version: 1/2/2012 Amended Table S2 B811

Crop yields and productivity indices for optimum management (B811) are maintained at the following NRES web site: <http://soilproductivity.nres.illinois.edu/>

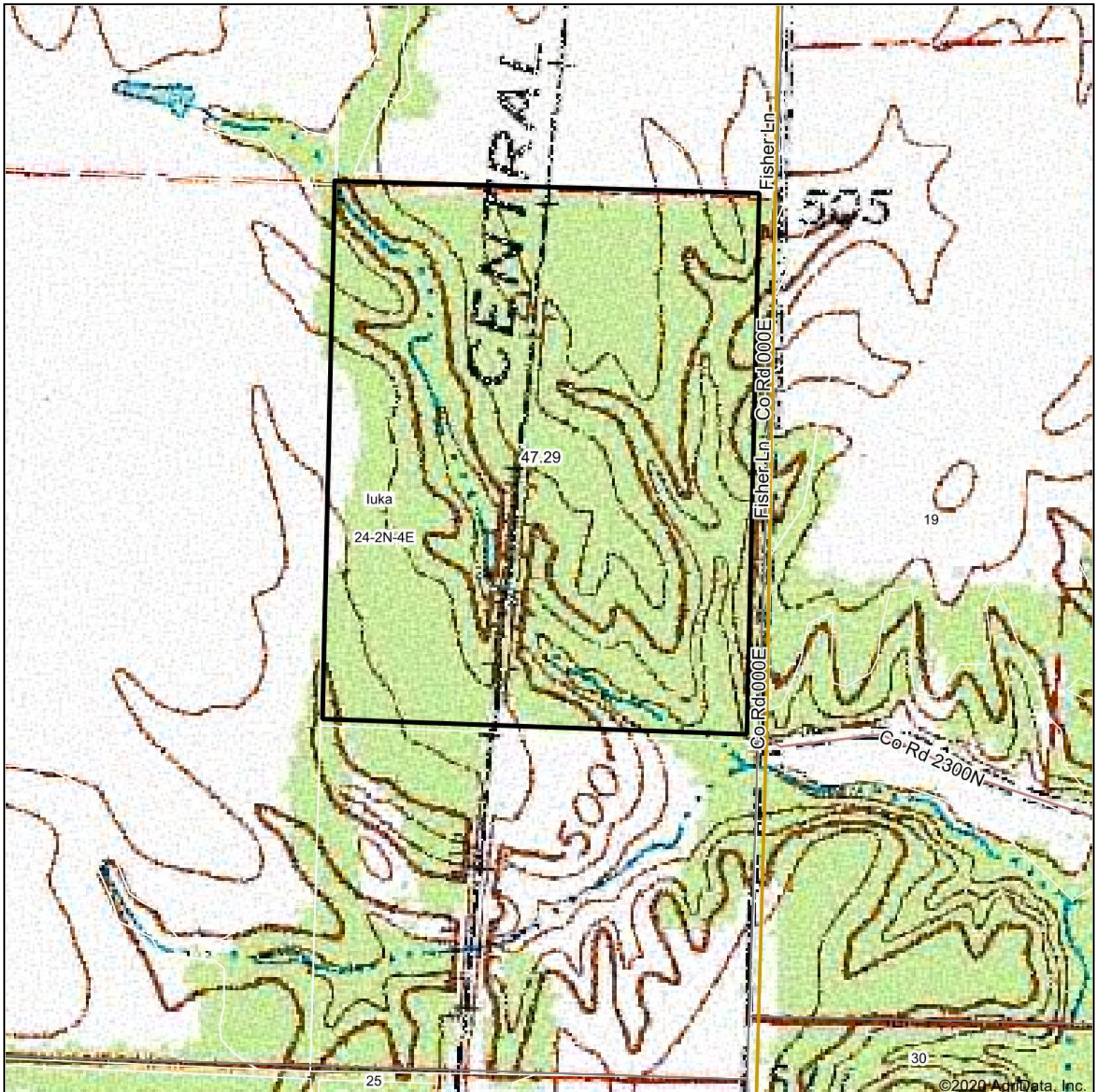
** Indexes adjusted for slope and erosion according to Bulletin 811 Table S3

e Soils in the well drained group were not rated for grass-legume and are shown with a zero "0".

*c: Using Capabilities Class Dominant Condition Aggregation Method

Soils data provided by USDA and NRCS. Soils data provided by University of Illinois at Champaign-Urbana.

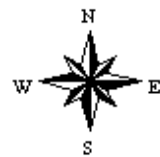
Topography Map



map center: 38° 35' 44.09, -88° 42' 2.71

0ft 466ft 932ft

24-2N-4E
Marion County
Illinois



9/22/2020



Maps Provided By:



© AgriData, Inc. 2020

www.AgridataInc.com

Field borders provided by Farm Service Agency as of 5/21/2008.