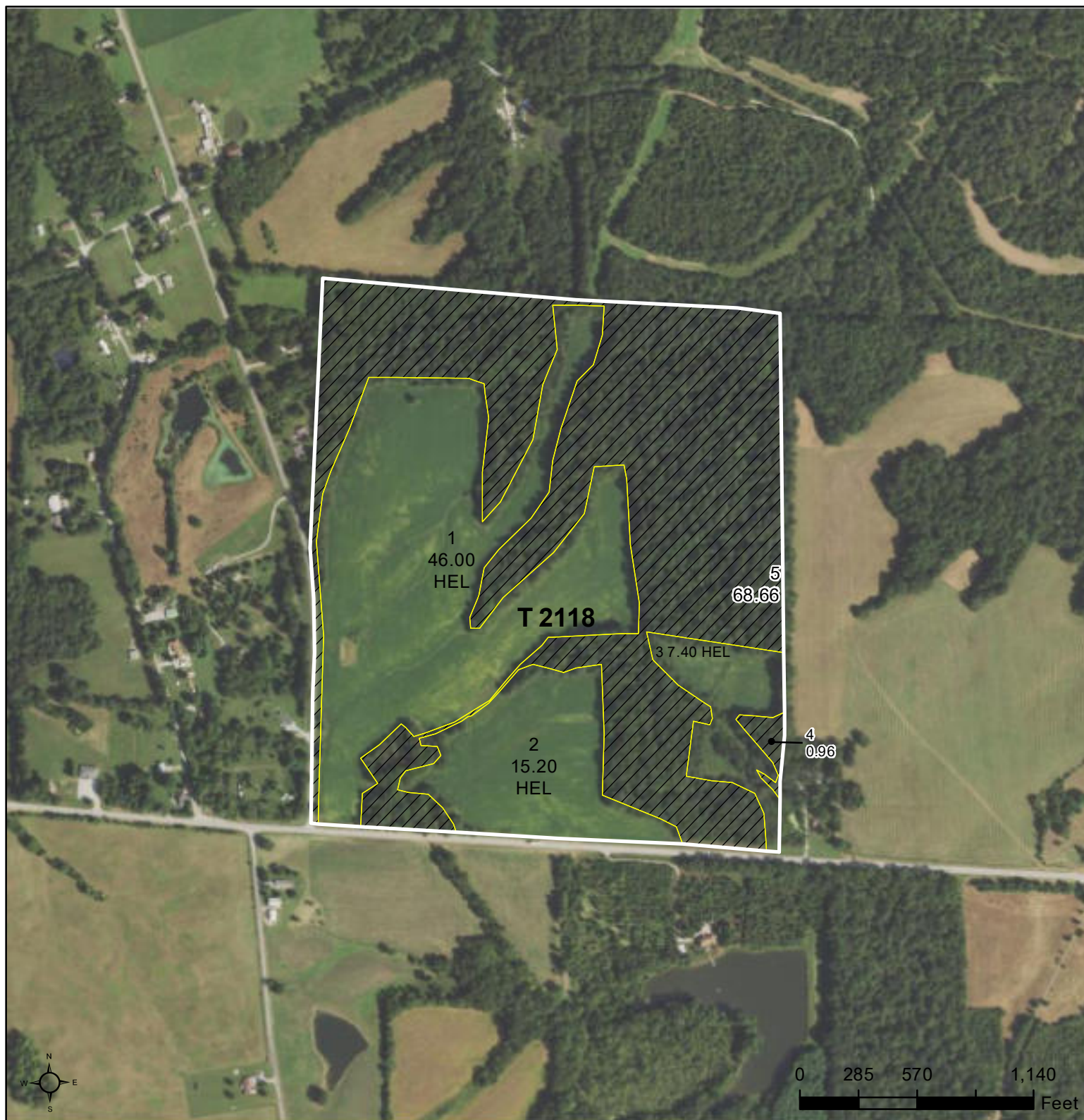




United States
Department of
Agriculture

Union County, Illinois



Common Land Unit

Tract Boundary

- Non-Cropland
- Cropland

Wetland Determination Identifiers

- Restricted Use
- Limited Restrictions
- Exempt from Conservation Compliance Provisions

Tract Cropland Total: 68.60 acres

2020 Program Year

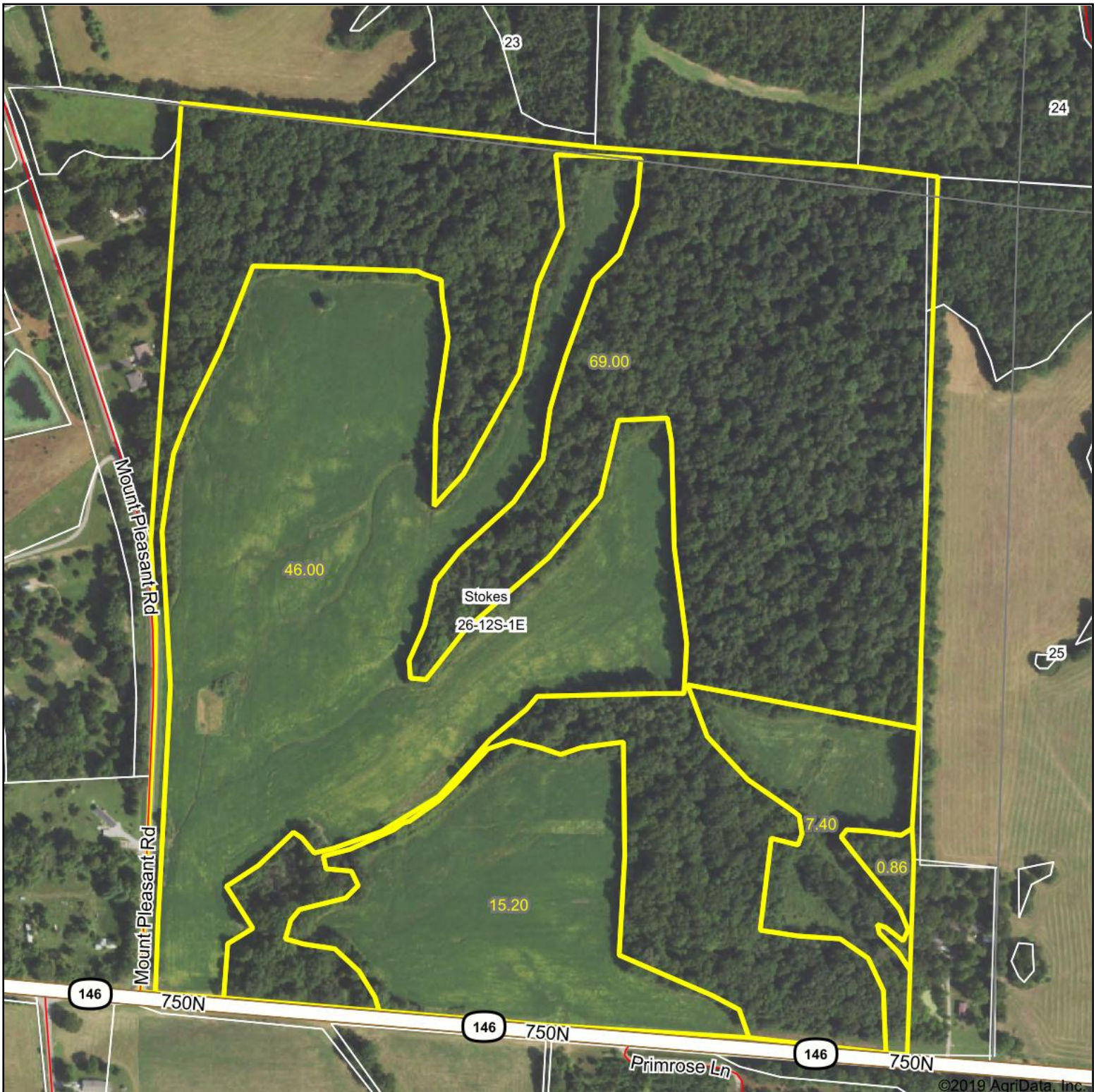
Map Created January 14, 2020

Farm 140
Tract 2118

IL181_T2118

United States Department of Agriculture (USDA) Farm Service Agency (FSA) maps are for FSA Program administration only. This map does not represent a legal survey or reflect actual ownership; rather it depicts the information provided directly from the producer and/or National Agricultural Imagery Program (NAIP) imagery. The producer accepts the data 'as is' and assumes all risks associated with its use. USDA-FSA assumes no responsibility for actual or consequential damage incurred as a result of any user's reliance on this data outside FSA Programs. Wetland identifiers do not represent the size, shape, or specific determination of the area. Refer to your original determination (CPA-026 and attached maps) for exact boundaries and determinations or contact USDA Natural Resources Conservation Service (NRCS).

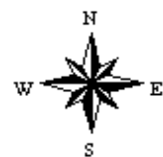
Aerial Map



Map Center: 37° 26' 49.44, -89° 4' 3.12

0ft 465ft 930ft

26-12S-1E
Union County
Illinois



6/18/2020



Maps Provided By:

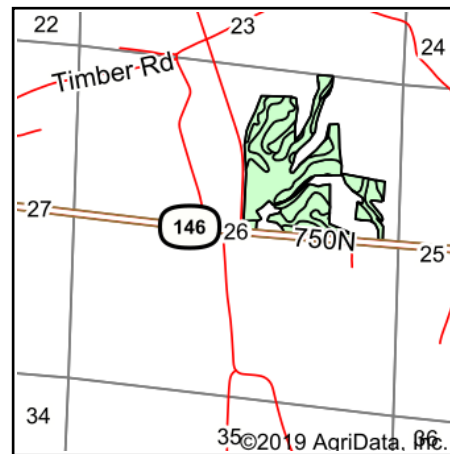


© AgriData, Inc. 2019

www.AgriDataInc.com

Field borders provided by Farm Service Agency as of 5/21/2008.

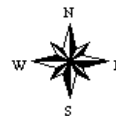
Soils Map



State: **Illinois**
 County: **Union**
 Location: **26-12S-1E**
 Township: **Stokes**
 Acres: **68.6**
 Date: **6/18/2020**



Maps Provided By:
surety
 CUSTOMIZED ONLINE MAPPING
 © AgriData, Inc. 2019 www.AgriDataInc.com



Area Symbol: IL181, Soil Area Version: 13								
Code	Soil Description	Acres	Percent of field	Il. State Productivity Index Legend	Corn Bu/A	Soybeans Bu/A	Wheat Bu/A	Crop productivity index for optimum management
**214B	Hosmer silt loam, 2 to 5 percent slopes	30.26	44.1%		**139	**46	**57	**104
**214C3	Hosmer silt loam, 5 to 10 percent slopes, severely eroded	21.98	32.0%		**104	**34	**43	**78
**214C2	Hosmer silt loam, 5 to 10 percent slopes, eroded	8.89	13.0%		**126	**41	**52	**95
**164B	Stoy silt loam, 2 to 5 percent slopes	4.77	7.0%		**144	**47	**57	**108
**214D2	Hosmer silt loam, 10 to 18 percent slopes, eroded	2.57	3.7%		**118	**39	**49	**88
**834F	Wellston-Westmore silt loams, 18 to 35 percent slopes	0.13	0.2%		**85	**28	**34	**64
Weighted Average					125.6	41.3	51.5	94.1

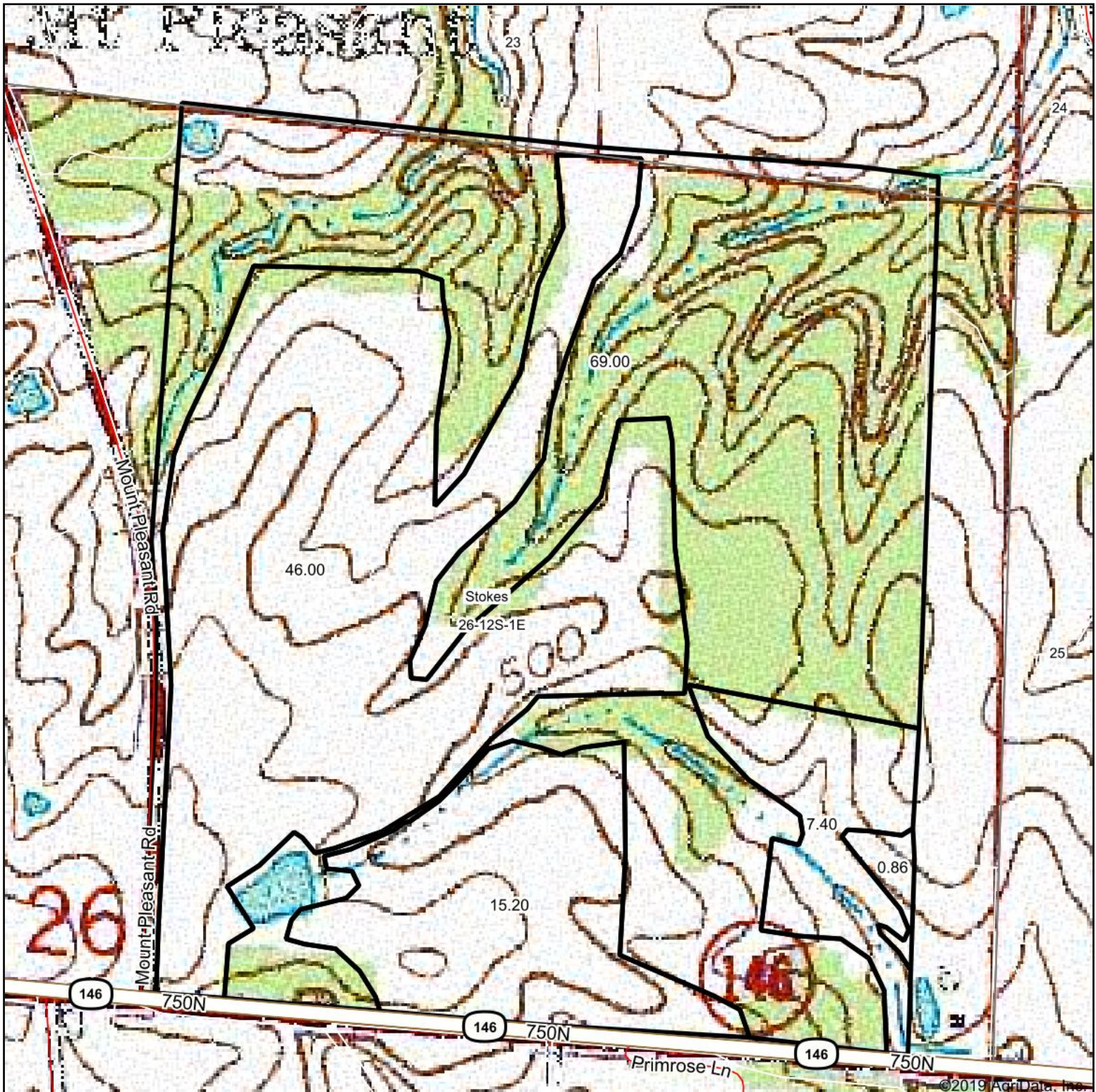
Table: Optimum Crop Productivity Ratings for Illinois Soil by K.R. Olson and J.M. Lang, Office of Research, ACES, University of Illinois at Champaign-Urbana. Version: 1/2/2012 Amended Table S2 B811

Crop yields and productivity indices for optimum management (B811) are maintained at the following NRES web site: <http://soilproductivity.nres.illinois.edu/>

** Indexes adjusted for slope and erosion according to Bulletin 811 Table S3

Soils data provided by USDA and NRCS. Soils data provided by University of Illinois at Champaign-Urbana.

Topography Map



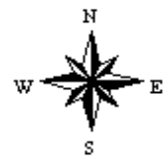
map center: 37° 26' 49.44, -89° 4' 3.12

0ft 465ft 930ft



26-12S-1E
Union County
Illinois

Maps Provided By:
 **surety**
CUSTOMIZED ONLINE MAPPING
© AgriData, Inc. 2019 www.AgriDataInc.com



6/18/2020