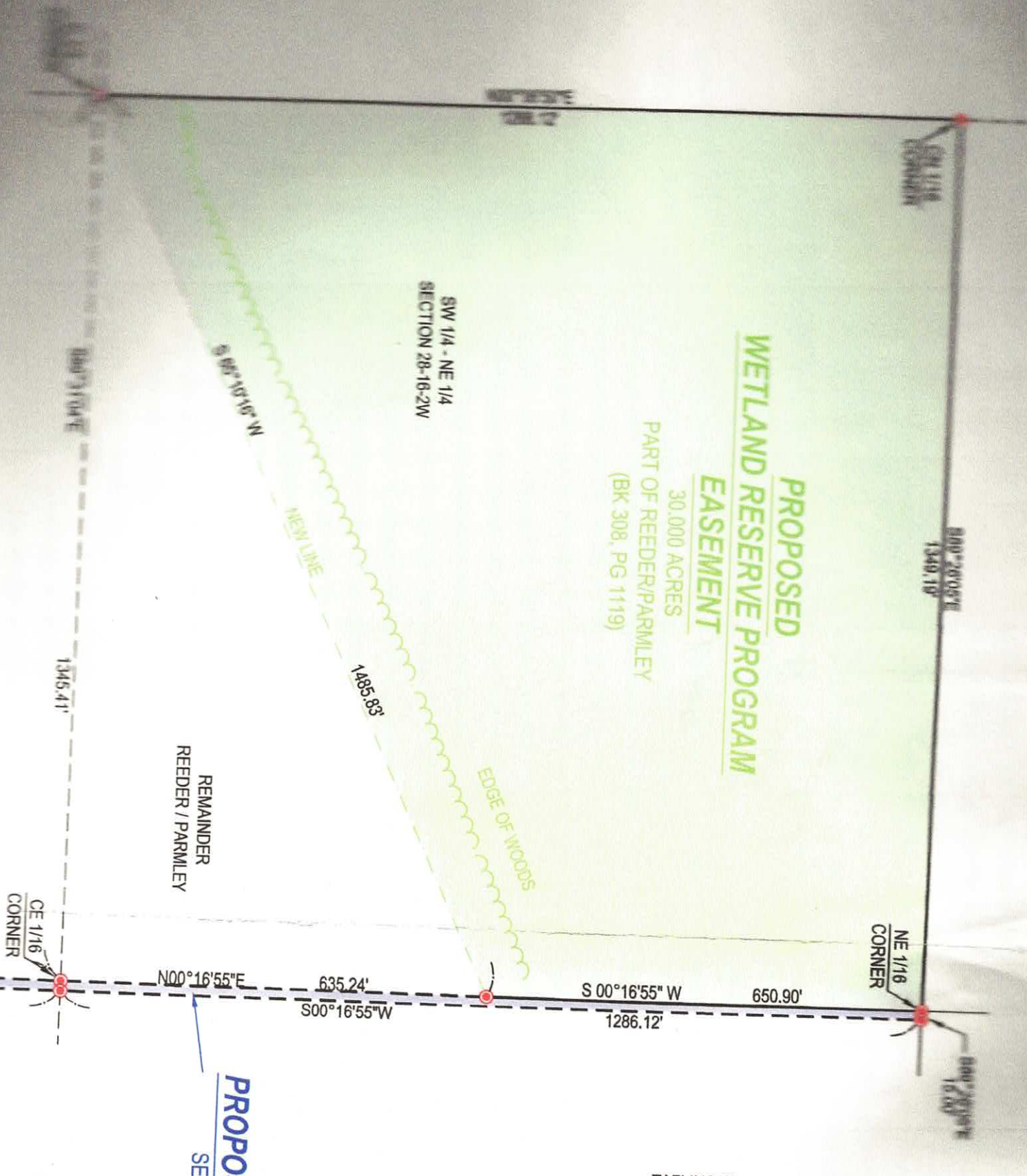


**PROPOSED
WETLAND RESERVE PROGRAM
EASEMENT**

30.000 ACRES
PART OF REEDER/PARMLEY
(BK 308, PG 1119)

SW 1/4 - NE 1/4
SECTION 28-16-2W



CE 1/16
CORNER

REMAINDER
REEDER / PARMLEY

PROPOSED 15'
SERVES PROPERTY
PART C

TAFLINGER
(300,448)