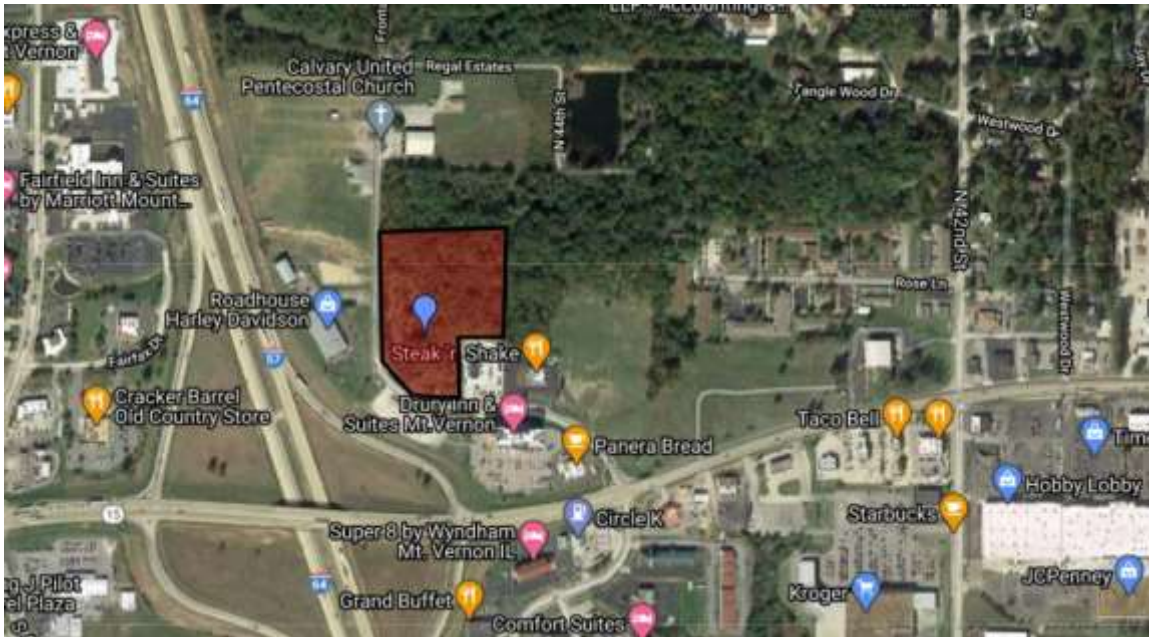


FOR SALE: 7.66+- Acres Jefferson County IL Commercial Property



Don Bailey

Managing Broker

Cell: 618-919-1031

dbailey@buyafarm.com

Sparta Main Office

Flora Branch Office

Office: 855-468-3478



buyafarm.com

PROPERTY DETAILS (2628L)

Address: Frontage Road, Mt. Vernon IL

Price Reduced: \$650,000 / List Price: \$850,000

Commercial property for sale in Mt. Vernon IL with great visibility and traffic count. Well-established new business next to tract. 594+- feet of road frontage. Great commercial area. Visible from Interstate 64, Interstate 57, State Route 15 and Broadway Street.

Parcel #06-26-45-1008

Taxes: \$4,734.46

Sections 35 and 26, T2S-R2E

Specializing in Rural Real Estate Sales and Auctions
MAIN OFFICE: 1403 Hillcrest Drive, Sparta IL 62286 / 800-443-1998