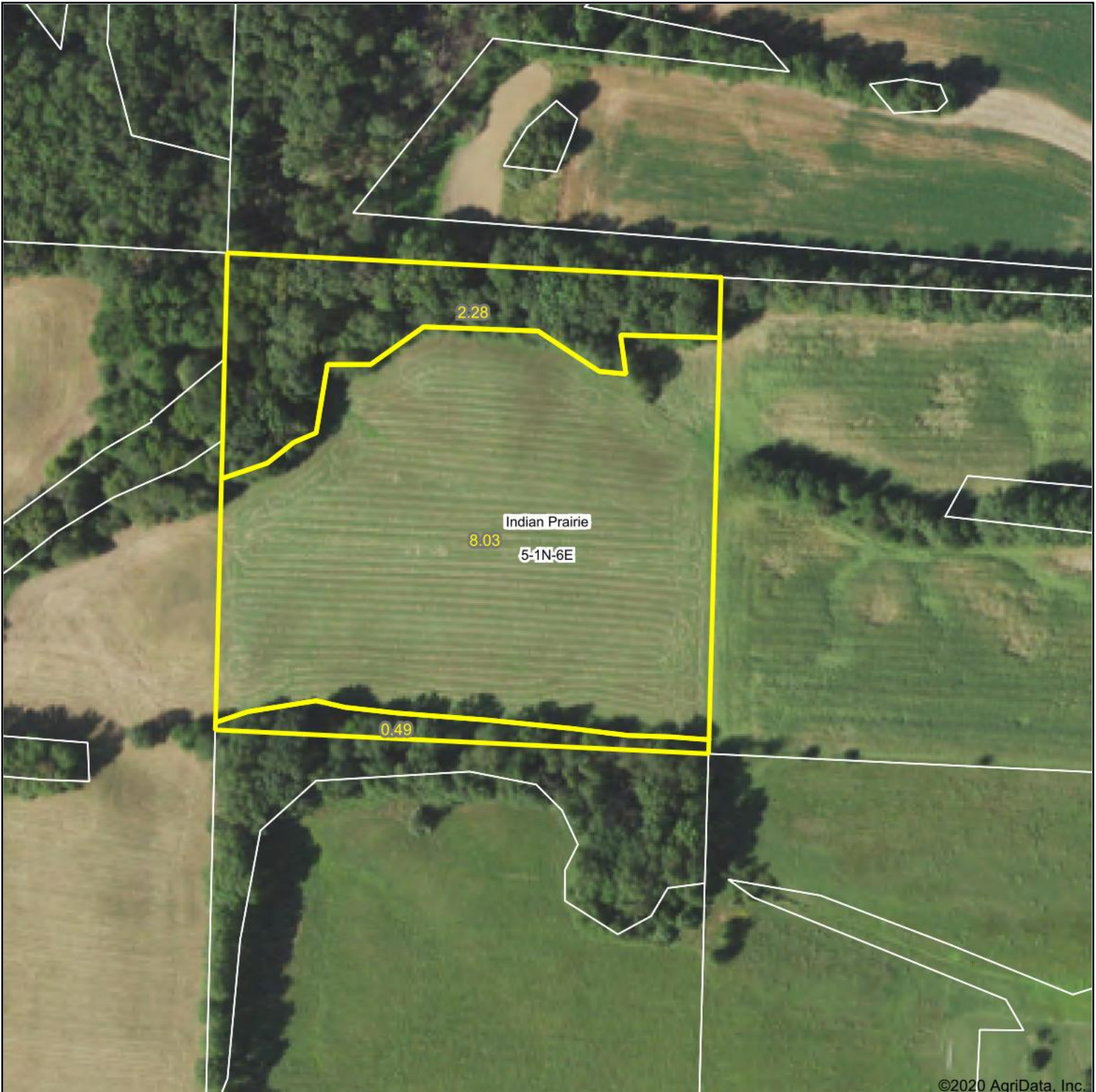


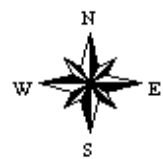
Aerial Map



Map Center: 38° 33' 4.69, -88° 33' 32.35



5-1N-6E
Wayne County
Illinois



8/3/2020



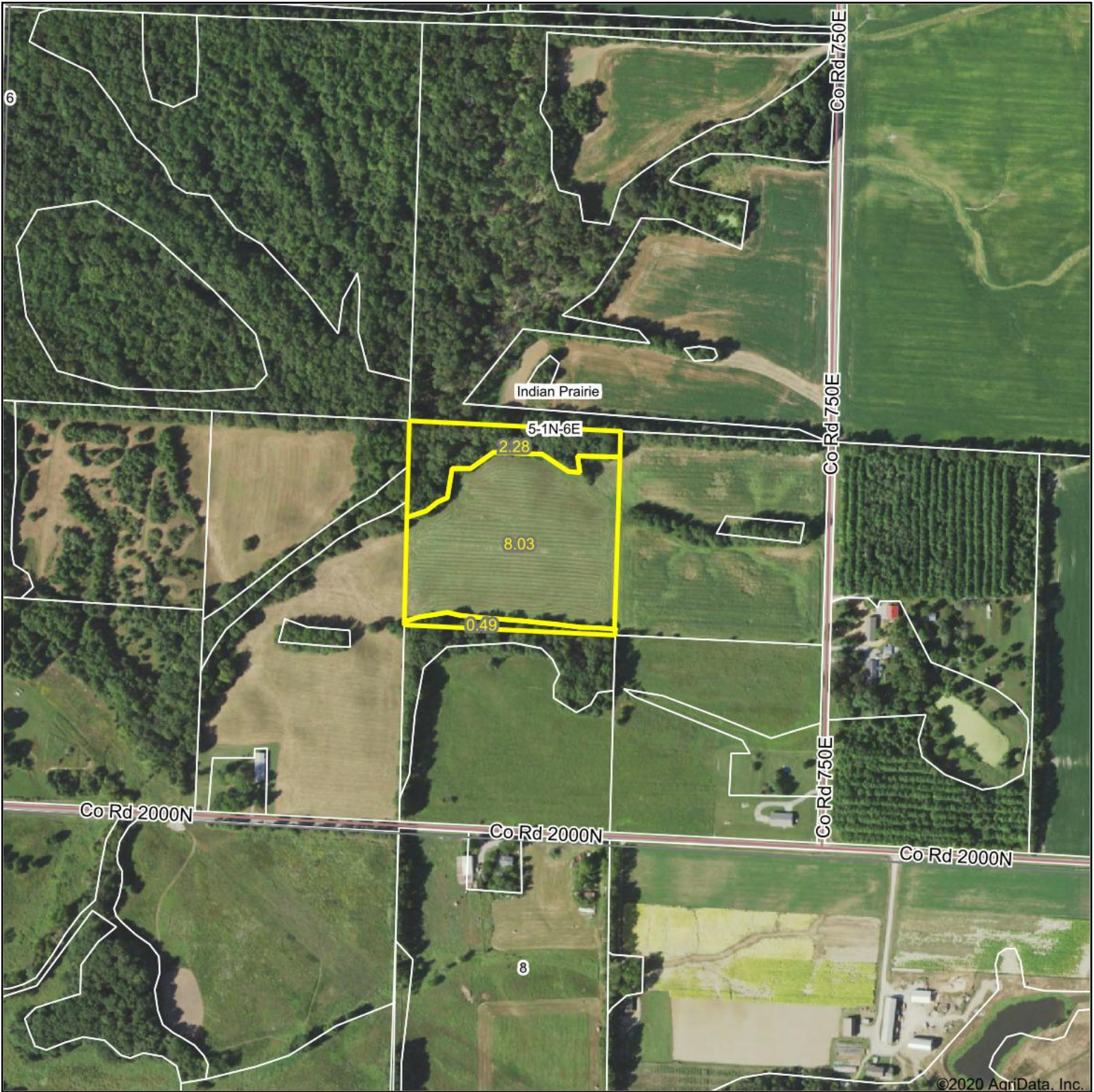
Maps Provided By:



© AgriData, Inc. 2020 www.AgriDataInc.com

Field borders provided by Farm Service Agency as of 5/21/2008.

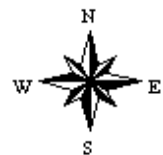
Aerial Map



Map Center: 38° 33' 4.69, -88° 33' 32.35



5-1N-6E
Wayne County
Illinois

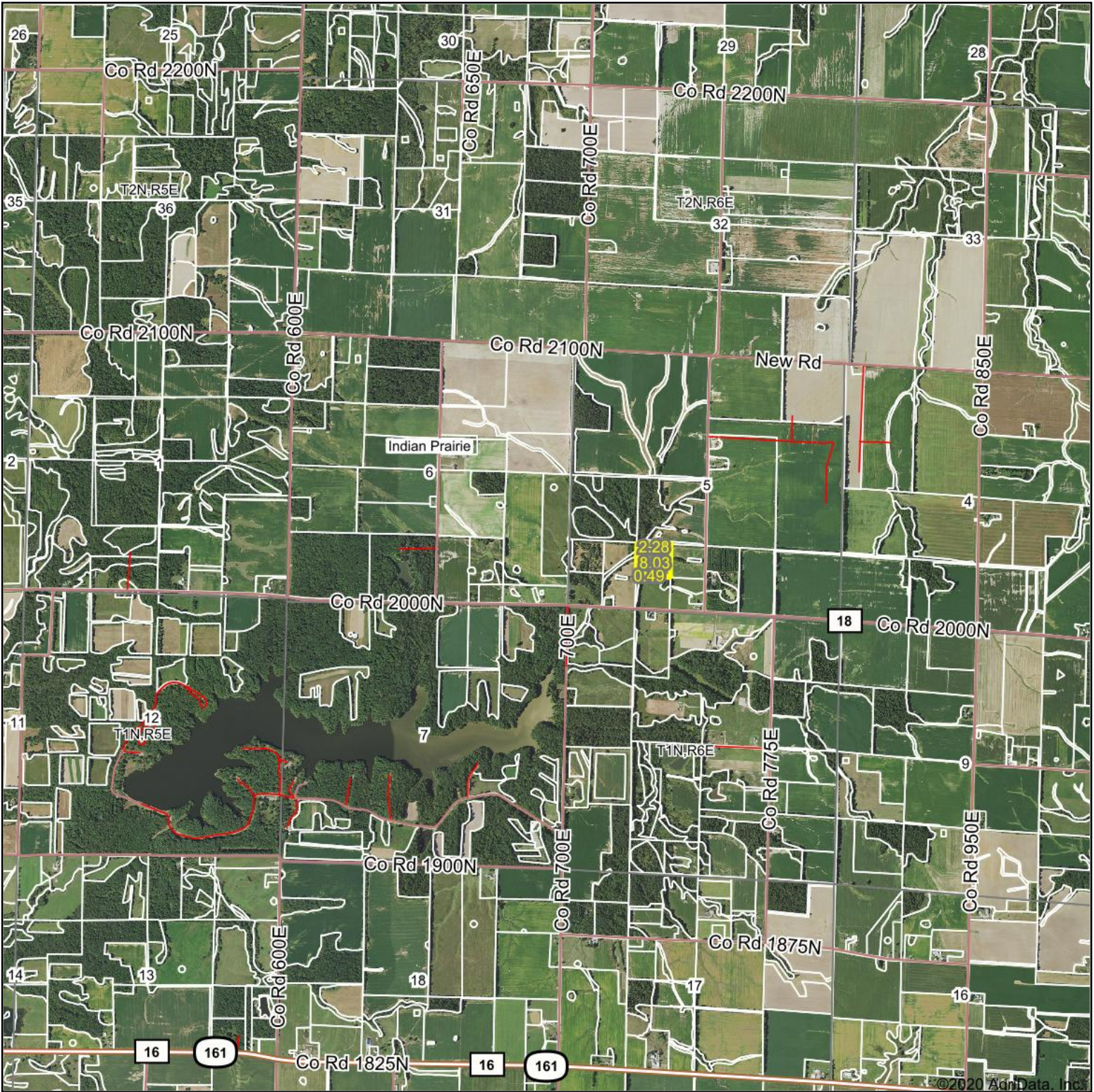


8/3/2020

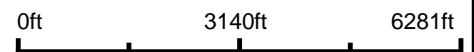
Maps Provided By:
 surety
CUSTOMIZED ONLINE MAPPING
© AgriData, Inc. 2020 www.AgriDataInc.com

Field borders provided by Farm Service Agency as of 5/21/2008.

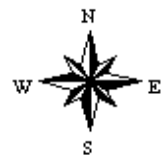
Aerial Map



Map Center: 38° 33' 7.51, -88° 34' 1.08



6-1N-6E
Wayne County
Illinois

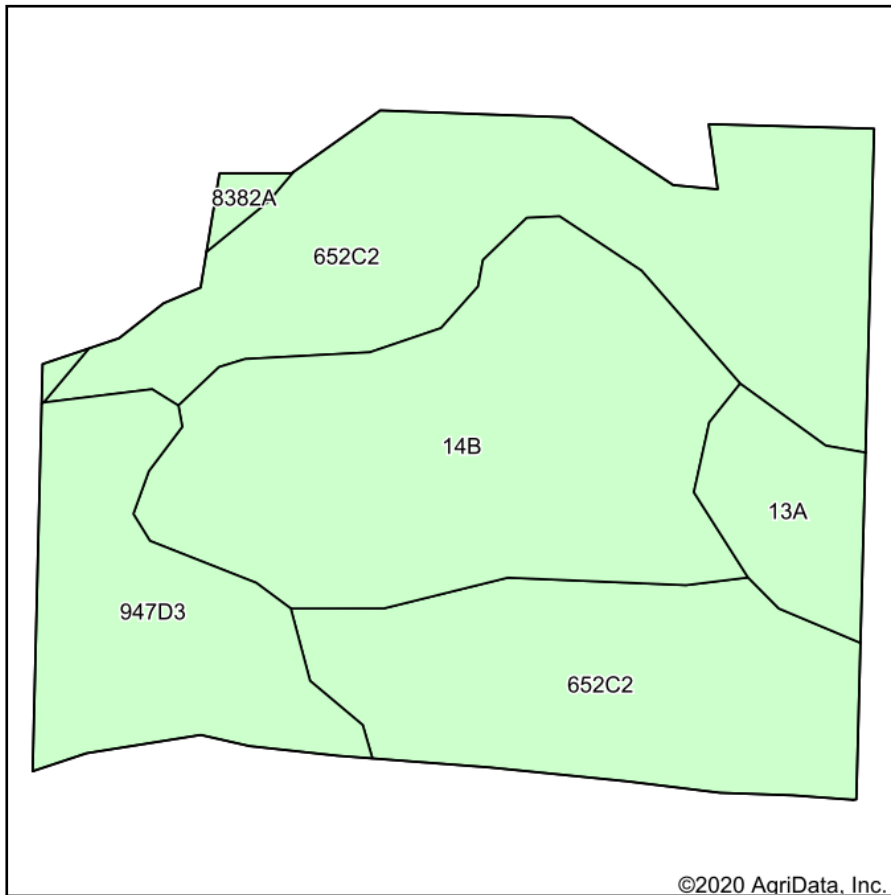


8/3/2020

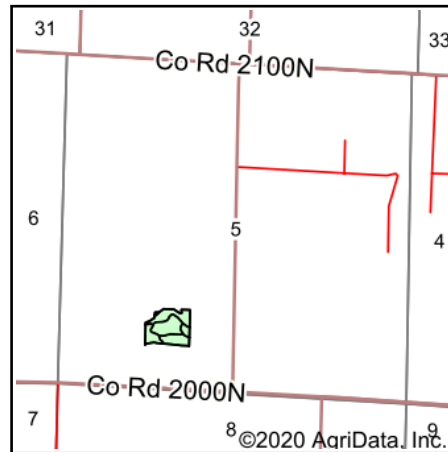
Maps Provided By:
 **surety**
CUSTOMIZED ONLINE MAPPING
© AgriData, Inc. 2020 www.AgridataInc.com

Field borders provided by Farm Service Agency as of 5/21/2008.

Soils Map



Soils data provided by USDA and NRCS.



State: **Illinois**
 County: **Wayne**
 Location: **5-1N-6E**
 Township: **Indian Prairie**
 Acres: **8.03**
 Date: **8/3/2020**



Maps Provided By:



© AgriData, Inc. 2020

www.AgriDataInc.com



Area Symbol: IL191. Soil Area Version: 18									
Code	Soil Description	Acres	Percent of field	Il. State Productivity Index Legend	Corn Bu/A	Soybeans Bu/A	Wheat Bu/A	Grass-legume e e hay, T/A	Crop productivity index for optimum management
**652C2	Passport silt loam, 5 to 10 percent slopes, eroded	3.84	47.8%		**116	**39	**51	**3.85	**88
**14B	Ava silt loam, 2 to 5 percent slopes	2.50	31.1%		**134	**44	**54	0.00	**99
**947D3	Hickory-Passport clay loams, 10 to 18 percent slopes, severely eroded	1.16	14.4%		**109	**36	**45	**2.89	**80
13A	Bluford silt loam, 0 to 2 percent slopes	0.46	5.7%		136	44	55	3.39	101
8382A	Belknap silt loam, 0 to 2 percent slopes, occasionally flooded	0.07	0.9%		156	52	63	4.89	117
Weighted Average					122.1	40.5	51.4	2.50	91.3

Table: Optimum Crop Productivity Ratings for Illinois Soil by K.R. Olson and J.M. Lang, Office of Research, ACES, University of Illinois at Champaign-Urbana. Version: 1/2/2012 Amended Table S2 B811

Crop yields and productivity indices for optimum management (B811) are maintained at the following NRES web site: <http://soilproductivity.nres.illinois.edu/>

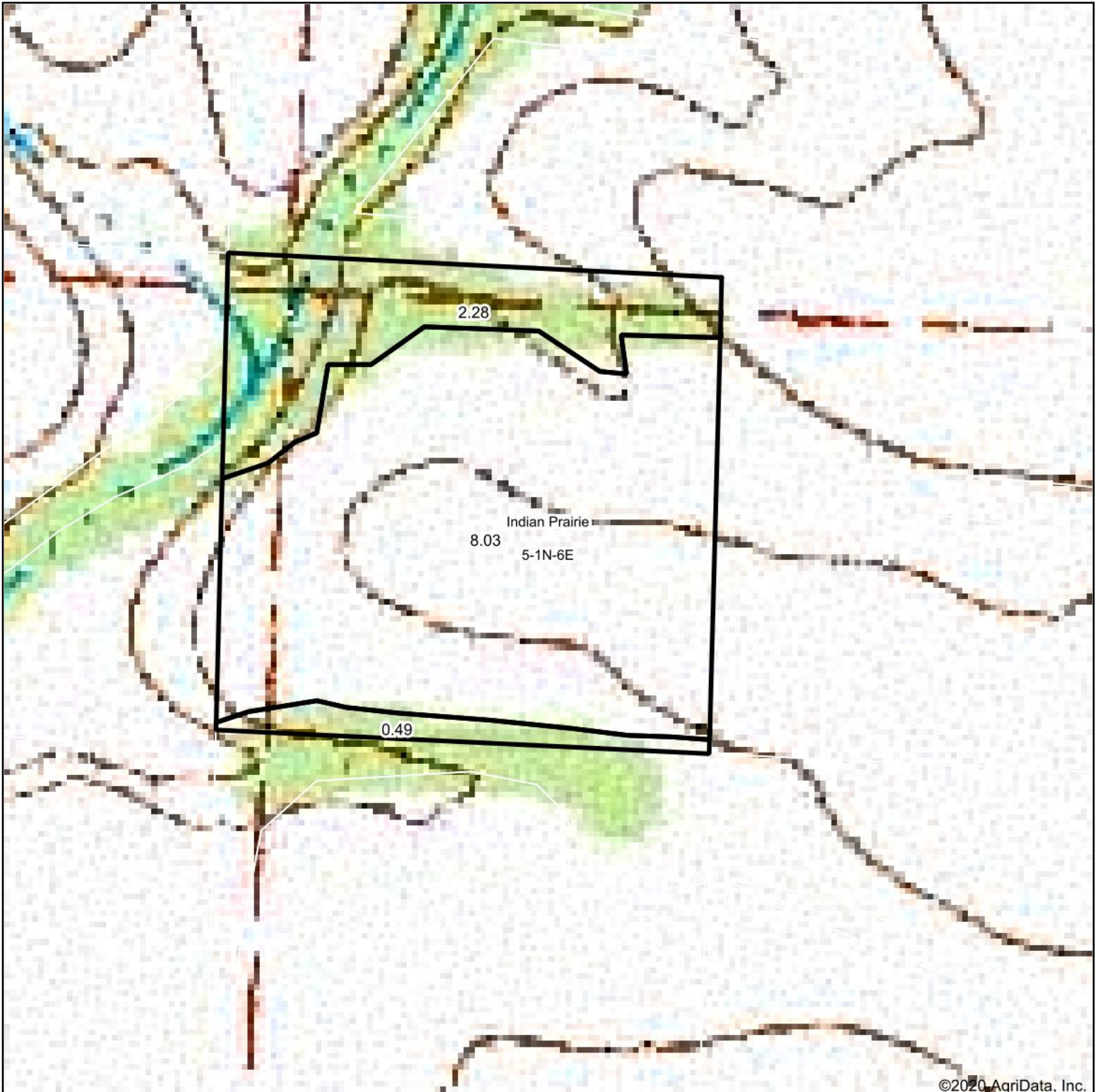
** Indexes adjusted for slope and erosion according to Bulletin 811 Table S3

e Soils in the well drained group were not rated for grass-legume and are shown with a zero "0".

*c: Using Capabilities Class Dominant Condition Aggregation Method

Soils data provided by USDA and NRCS. Soils data provided by University of Illinois at Champaign-Urbana.

Topography Map

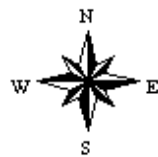


©2020 AgriData, Inc.

map center: 38° 33' 4.69, -88° 33' 32.35



5-1N-6E
Wayne County
Illinois



8/3/2020



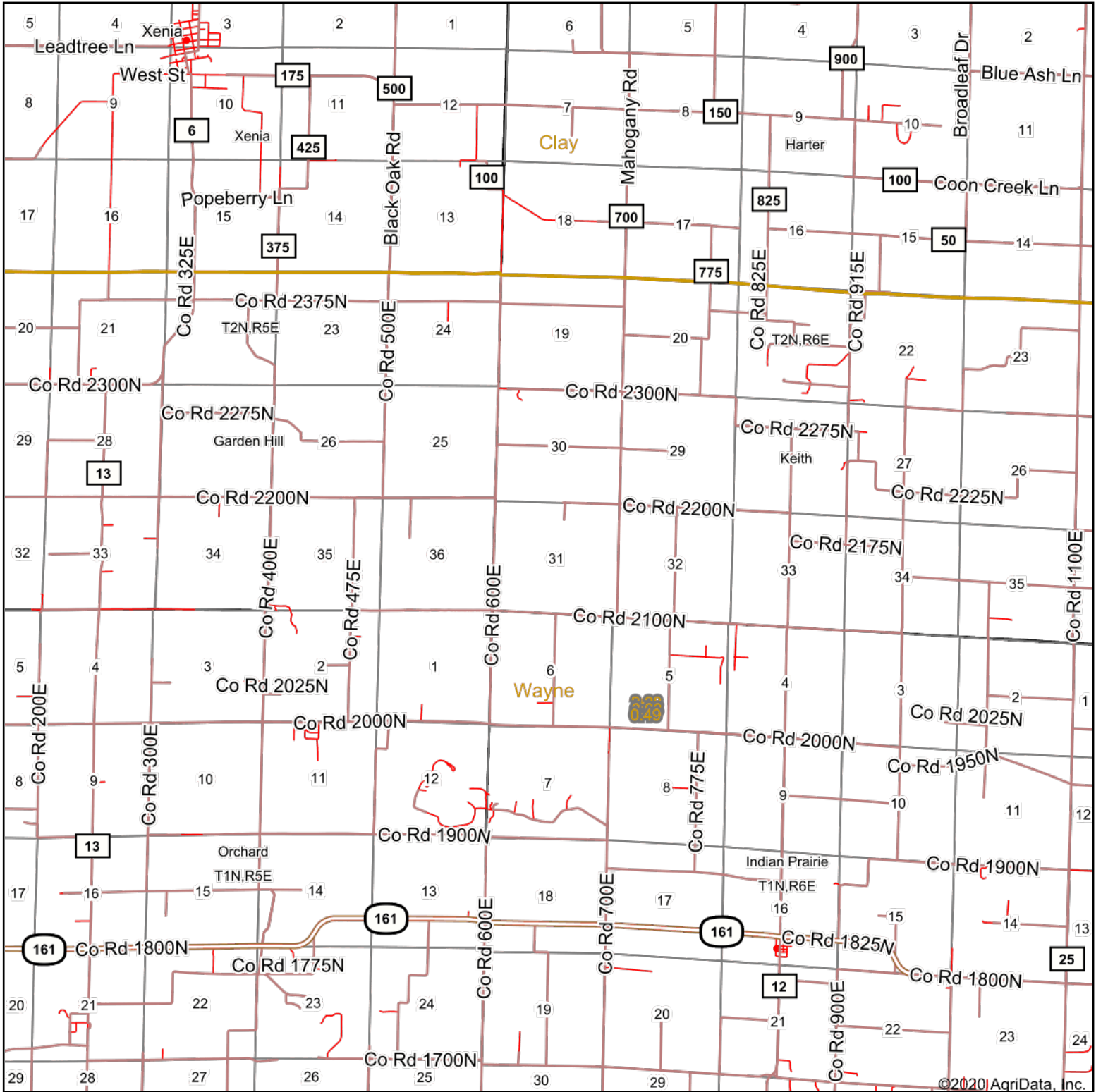
Maps Provided By:



© AgriData, Inc. 2020

www.AgridataInc.com

OverView Map



©2020 AgriData, Inc.

map center: 38° 34' 19.36, -88° 34' 33.51

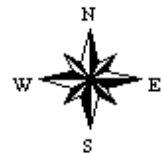
0ft 7328ft 14655ft



Maps Provided By:



© AgriData, Inc. 2020 www.AgriDataInc.com



8/3/2020