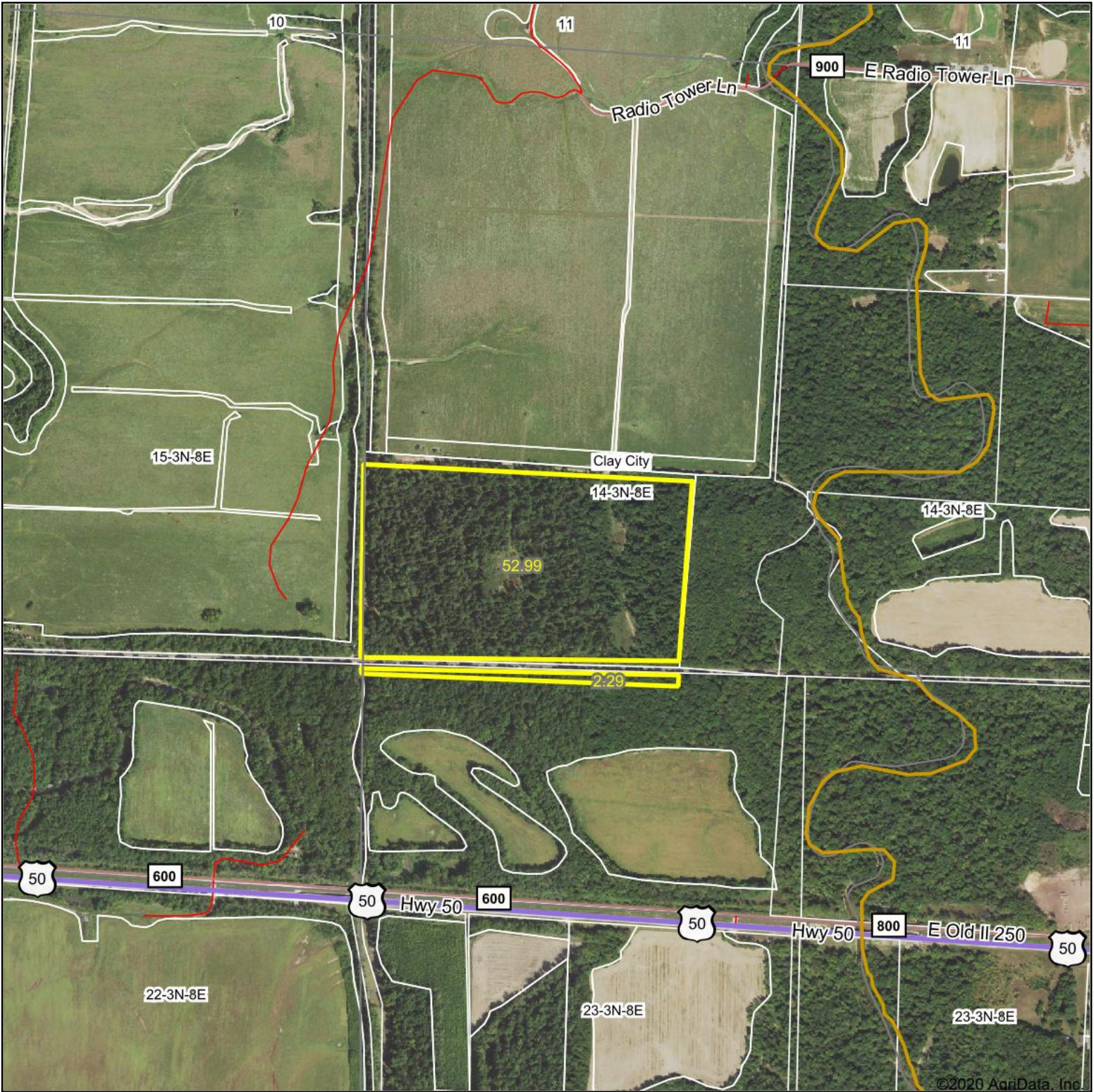
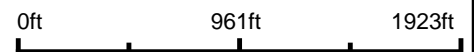


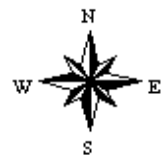
Aerial Map



Map Center: 38° 41' 36.73, -88° 17' 27.44



14-3N-8E
Clay County
Illinois



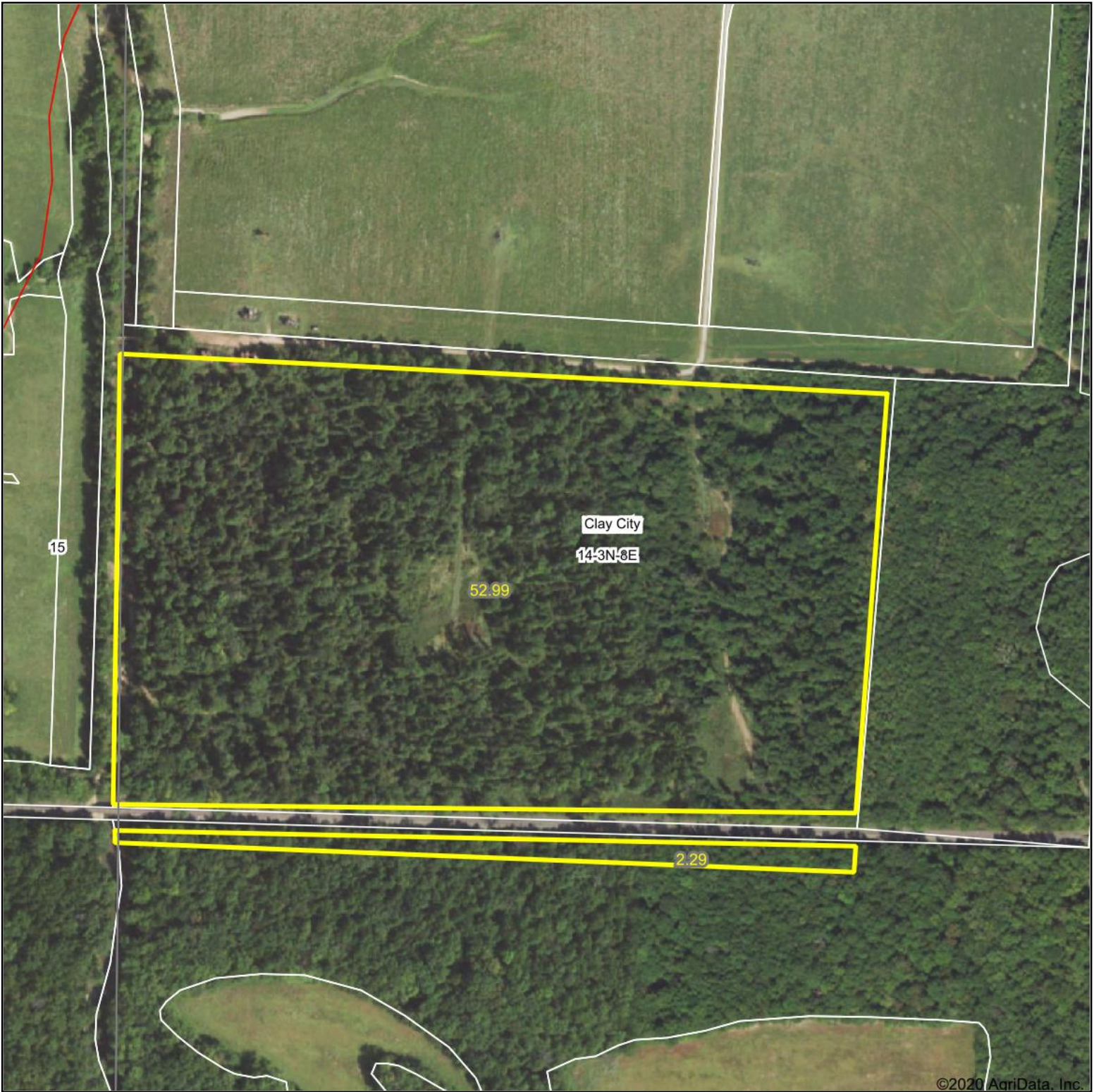
8/24/2020



Maps Provided By:
surety
CUSTOMIZED ONLINE MAPPING
© AgriData, Inc. 2020 www.AgriDataInc.com

Field borders provided by Farm Service Agency as of 5/21/2008.

Aerial Map



©2020 AgriData, Inc.

Map Center: 38° 41' 36.73, -88° 17' 27.45



14-3N-8E
Clay County
Illinois



8/24/2020



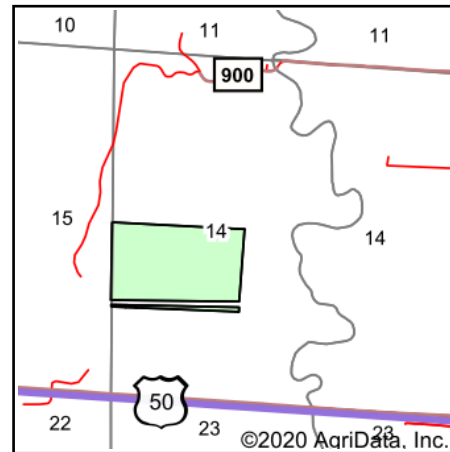
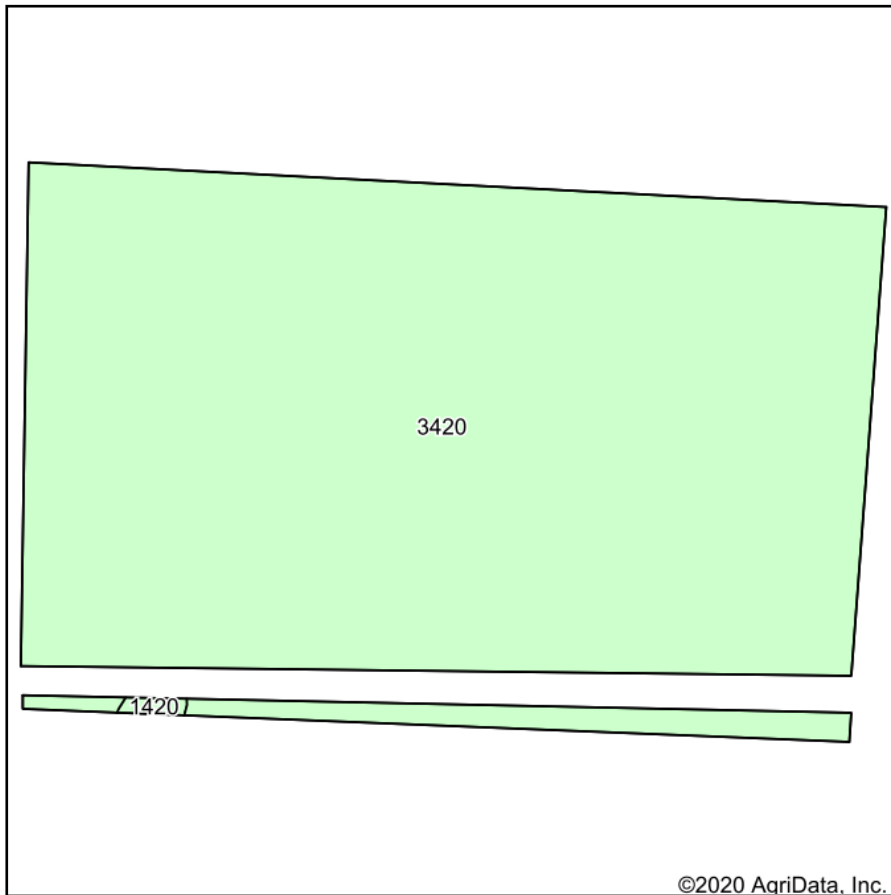
Maps Provided By:



© AgriData, Inc. 2020 www.AgriDataInc.com

Field borders provided by Farm Service Agency as of 5/21/2008.

Soils Map



State: **Illinois**
 County: **Clay**
 Location: **14-3N-8E**
 Township: **Clay City**
 Acres: **55.28**
 Date: **8/24/2020**



Maps Provided By:



Soils data provided by USDA and NRCS.

| Area Symbol: IL025. Soil Area Version: 15 | | | | | | | | | |
|-------------------------------------------|----------------------------------------------|-------|------------------|-------------------------------------|------------|---------------|------------|-------------------------|------------------------------------------------|
| Code | Soil Description | Acres | Percent of field | Il. State Productivity Index Legend | Corn Bu/A | Soybeans Bu/A | Wheat Bu/A | Grass-legume e hay, T/A | Crop productivity index for optimum management |
| 3420 | Piopolis silty clay loam, frequently flooded | 55.14 | 99.7% | | 142 | 48 | 59 | 4.39 | 108 |
| 1420 | Piopolis silty clay loam, undrained | 0.14 | 0.3% | | 142 | 48 | 59 | 4.39 | 108 |
| Weighted Average | | | | | 142 | 48 | 59 | 4.39 | 108 |

Table: Optimum Crop Productivity Ratings for Illinois Soil by K.R. Olson and J.M. Lang, Office of Research, ACES, University of Illinois at Champaign-Urbana. Version: 1/2/2012 Amended Table S2 B811

Crop yields and productivity indices for optimum management (B811) are maintained at the following NRES web site: <http://soilproductivity.nres.illinois.edu/>

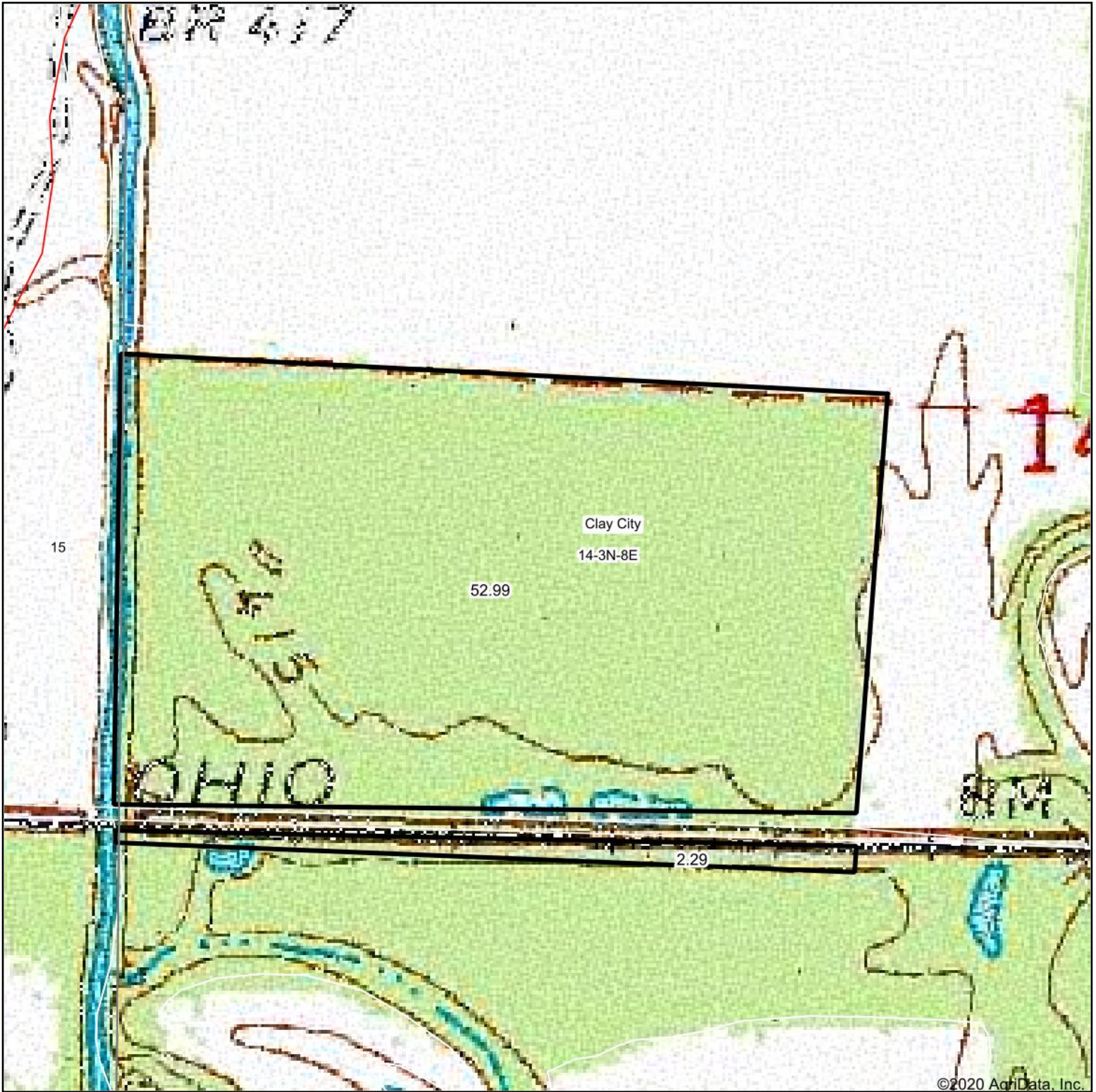
** Indexes adjusted for slope and erosion according to Bulletin 811 Table S3

e Soils in the well drained group were not rated for grass-legume and are shown with a zero "0".

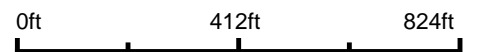
*c: Using Capabilities Class Dominant Condition Aggregation Method

Soils data provided by USDA and NRCS. Soils data provided by University of Illinois at Champaign-Urbana.

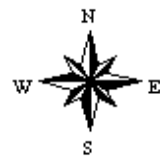
Topography Map



map center: 38° 41' 36.73, -88° 17' 27.45



14-3N-8E
Clay County
Illinois



8/24/2020



Maps Provided By:



© AgriData, Inc. 2020 www.AgriDataInc.com