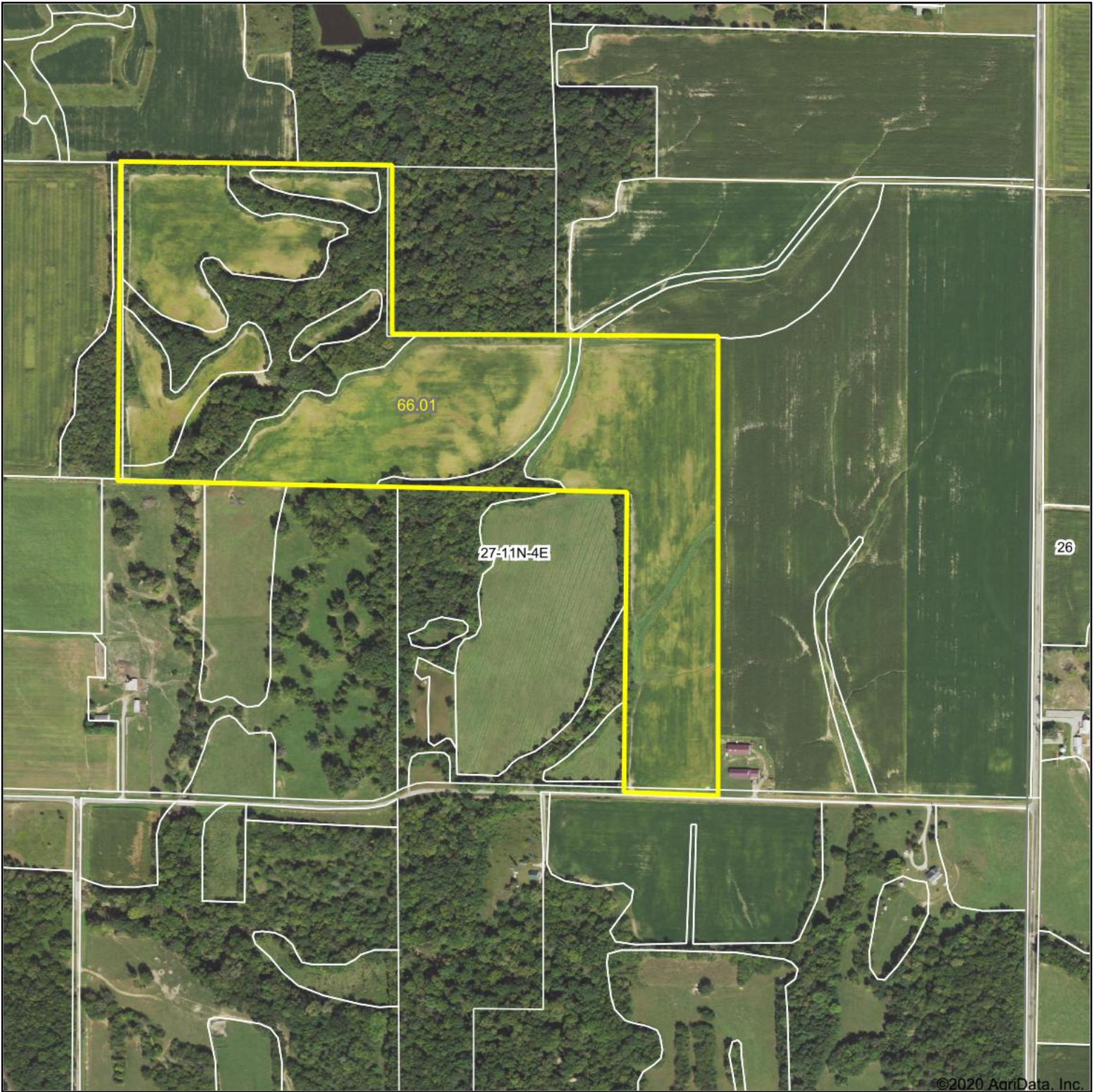
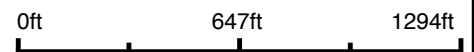


Aerial Map



©2020 AgriData, Inc.

Map Center: 39° 22' 5.03, -88° 44' 22.39



27-11N-4E
Shelby County
Illinois



8/11/2020

Maps Provided By:
 **surety**[®]
CUSTOMIZED ONLINE MAPPING
© AgriData, Inc. 2020 www.AgriDataInc.com

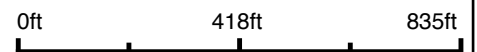
Field borders provided by Farm Service Agency as of 5/21/2008.

Aerial Map



©2020 AgriData, Inc.

Map Center: 39° 22' 7.78, -88° 44' 29.18



27-11N-4E
Shelby County
Illinois



8/11/2020



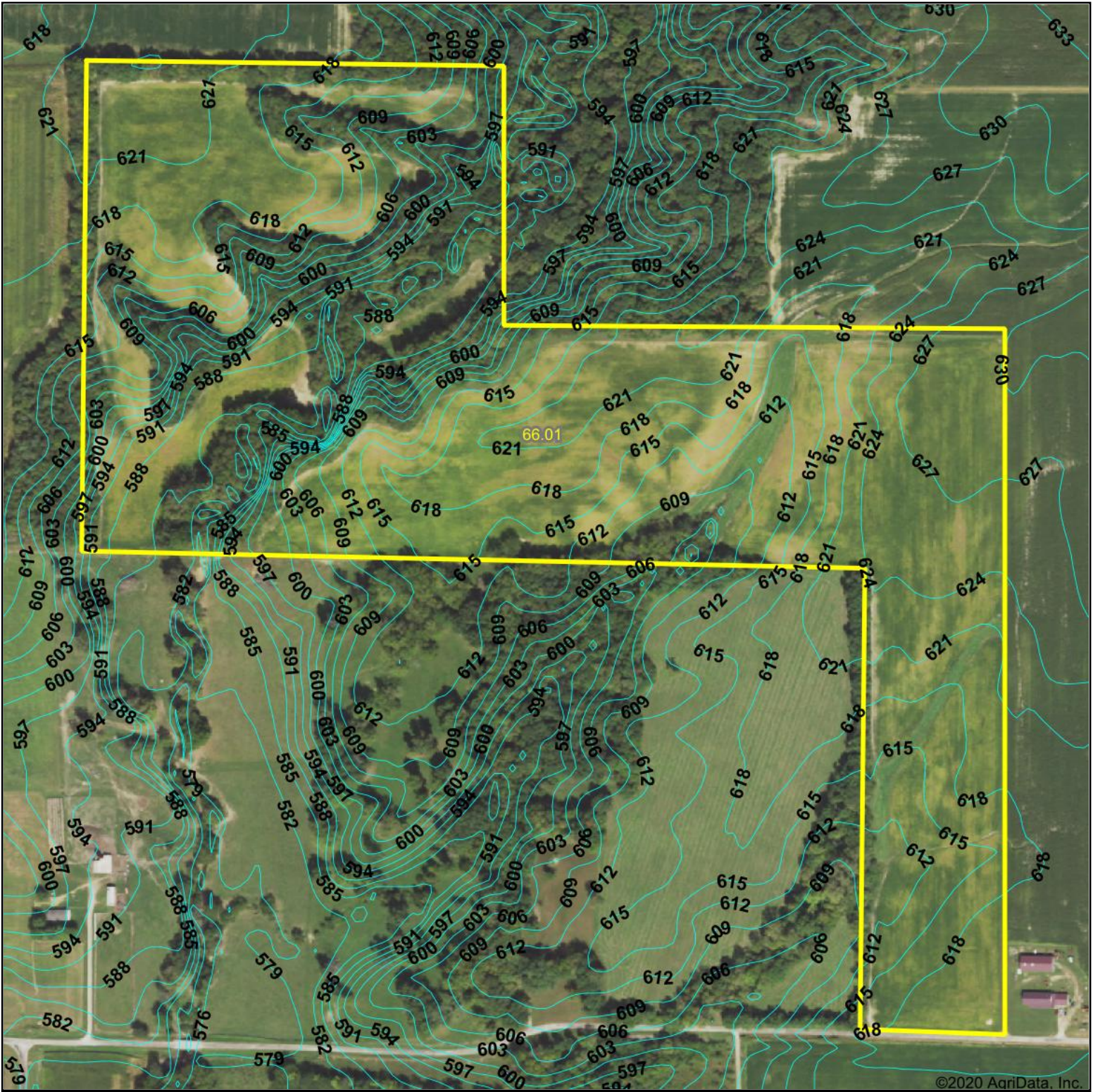
Maps Provided By:



© AgriData, Inc. 2020

www.AgriDataInc.com

Topography Contours



©2020 AgriData, Inc.



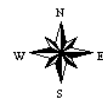
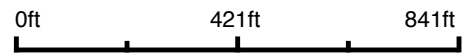
Maps Provided By:



© AgriData, Inc. 2020

www.AgriDataInc.com

Source: USGS 10 meter dem
 Interval(ft): 3.0
 Min: 581.2
 Max: 623.6
 Range: 42.4
 Average: 611.1
 Standard Deviation: 10.7 ft



8/11/2020

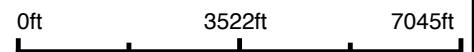
27-11N-4E
 Shelby County
 Illinois

Map Center: 39° 22' 8.55, -88° 44' 31.12

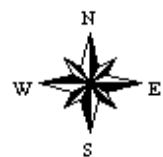
Aerial Map



Map Center: 39° 23' 3.09, -88° 45' 46.54



21-11N-4E
Shelby County
Illinois



8/11/2020



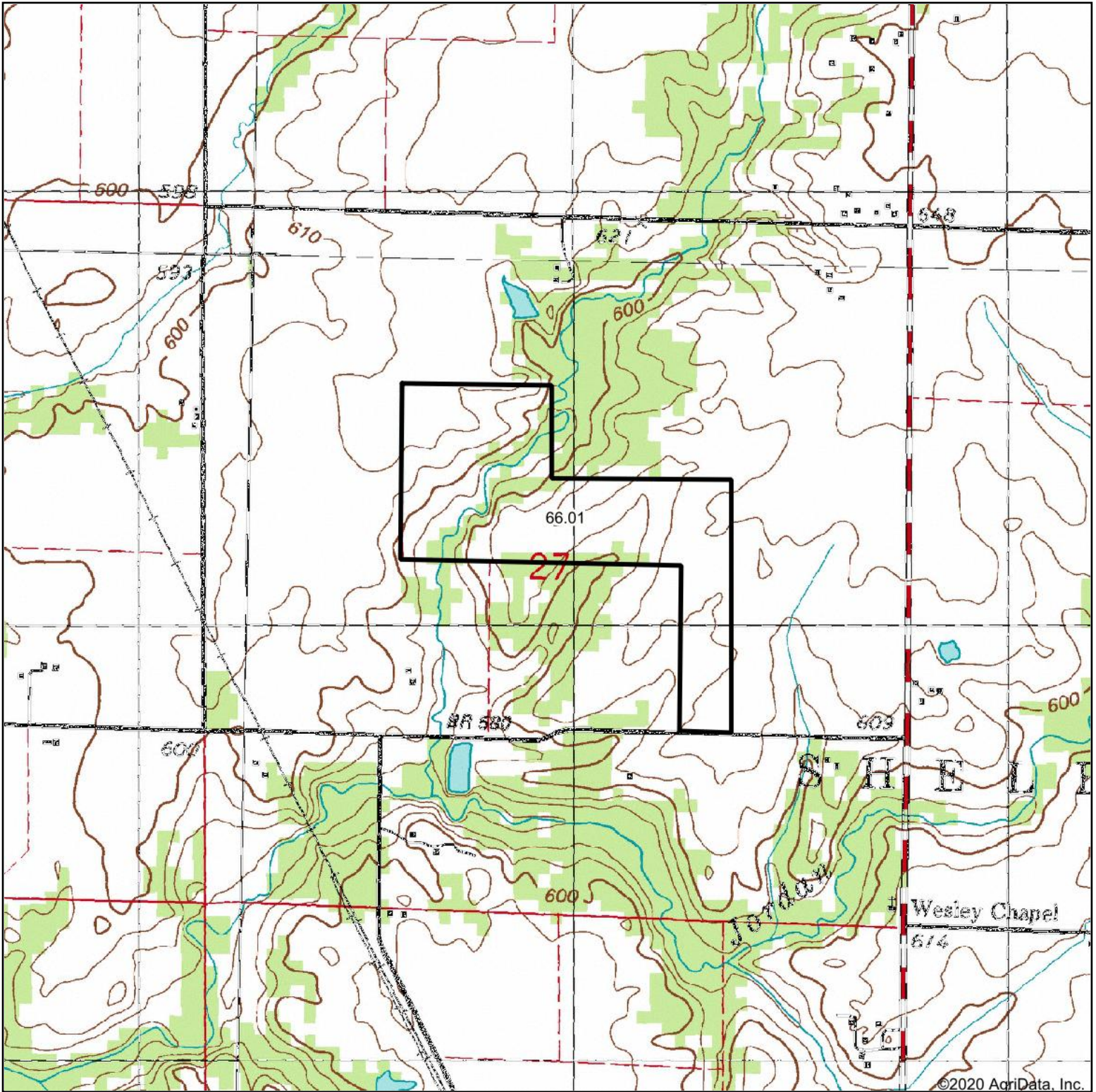
Maps Provided By:



© AgriData, Inc. 2020

www.AgriDataInc.com

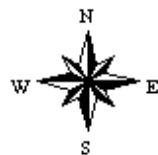
Topography Map



map center: 39° 22' 8.55, -88° 44' 31.11

0ft 1174ft 2348ft

27-11N-4E
Shelby County
Illinois



8/11/2020



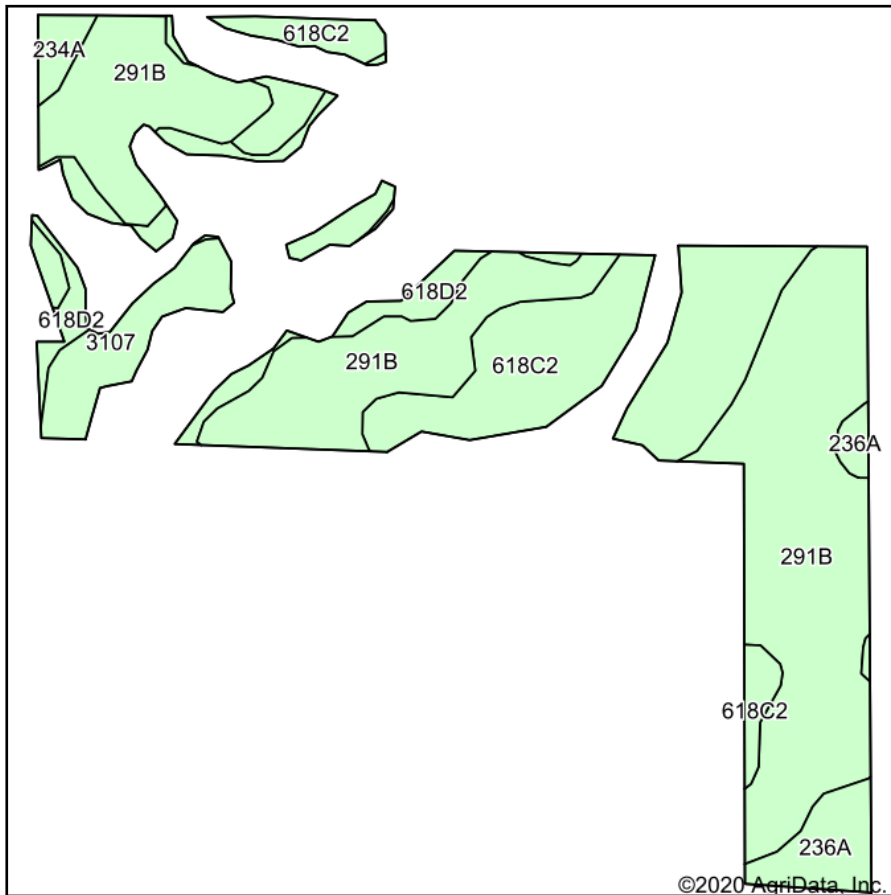
Maps Provided By:



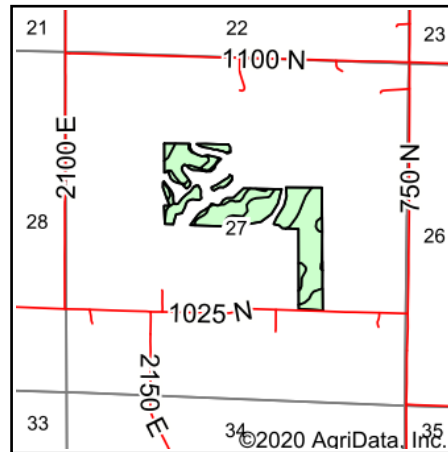
© AgriData, Inc. 2020

www.AgrIDataInc.com

Soils Map



Soils data provided by USDA and NRCS.



State: **Illinois**
 County: **Shelby**
 Location: **27-11N-4E**
 Township: **Shelbyville**
 Acres: **43.89**
 Date: **8/11/2020**



Maps Provided By:



Area Symbol: IL173. Soil Area Version: 17								
Code	Soil Description	Acres	Percent of field	Il. State Productivity Index Legend	Corn Bu/A	Soybeans Bu/A	Crop productivity index for optimum management	
**291B	Xenia silt loam, Bloomington Ridged Plain, 2 to 5 percent slopes	23.64	53.9%		**160	**50	**117	
**618C2	Senachwine silt loam, 5 to 10 percent slopes, eroded	11.33	25.8%		**136	**44	**100	
3107	Sawmill silty clay loam, 0 to 2 percent slopes, frequently flooded	3.10	7.1%		189	60	139	
**618D2	Senachwine silt loam, 10 to 18 percent slopes, eroded	3.03	6.9%		**130	**42	**95	
236A	Sabina silt loam, 0 to 2 percent slopes	2.16	4.9%		168	52	122	
234A	Sunbury silt loam, 0 to 2 percent slopes	0.63	1.4%		179	57	131	
Weighted Average					154.4	48.8	113.1	

Table: Optimum Crop Productivity Ratings for Illinois Soil by K.R. Olson and J.M. Lang, Office of Research, ACES, University of Illinois at Champaign-Urbana. Version: 1/2/2012 Amended Table S2 B811

Crop yields and productivity indices for optimum management (B811) are maintained at the following NRES web site: <http://soilproductivity.nres.illinois.edu/>

** Indexes adjusted for slope and erosion according to Bulletin 811 Table S3

*c: Using Capabilities Class Dominant Condition Aggregation Method

Soils data provided by USDA and NRCS. Soils data provided by University of Illinois at Champaign-Urbana.