

ONLINE REAL ESTATE AUCTION

Saline County IL 92+- Acres - 2 Tracts

Tracts Located South and SW of Galatia IL

SOLD!

Online Bidding Closes Tuesday, June 30, 2020 at 8 p.m. CST

To Bid or for More Information, go to www.buyafarm.com

PROPERTY INSPECTION BY APPOINTMENT ONLY

OFFERED IN 2 TRACTS

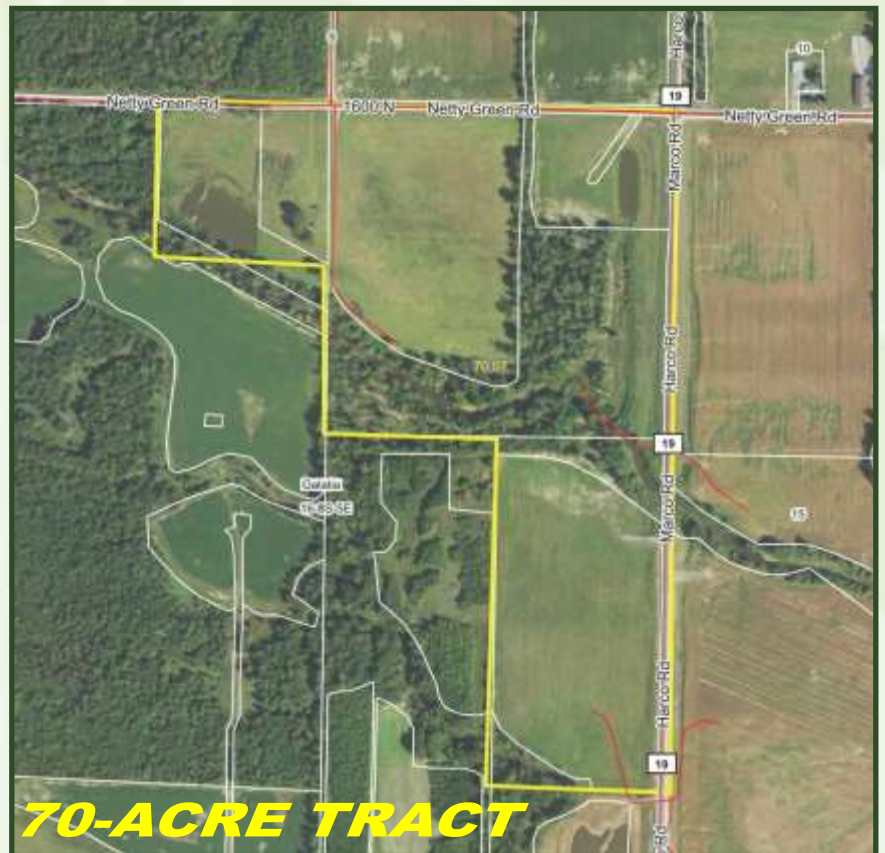
22-Acre Tract: Mostly tillable. Buyer will receive 2020 crop income. Located South of Galatia with frontage on Brown Road.

70-Acre Tract: 39 tillable acres and timber. Buyer will receive 2020 crop income. Modern fencing. Large pond and creek. Hunting and recreation. Located SW of Galatia with frontage on Harco Road and Netty Green Road.

REAL ESTATE AUCTION TERMS & CONDITIONS: 10% down, balance at closing. No buyer's premium. Auctioneer Don Bailey, IL Lic #441002325. Bidding is on a per acre basis - Final bid X acres of parcel. Complete bidding details, terms, conditions, photos, etc. on buyafarm.com.

ONLINE REAL ESTATE AUCTION

Saline County IL 92+- Acres - 2 Tracts



buyafarm.com

Specializing in Rural Real Estate Sales and Auctions



BRANCH OFFICE: 301 N Main St, Flora IL 62839 - 618-919-1031

buyafarm.com

MANAGING BROKER / AUCTIONEER

Don Bailey

618-919-1031

[dbailey@buyafarm.com](mailto:d Bailey@buyafarm.com)

