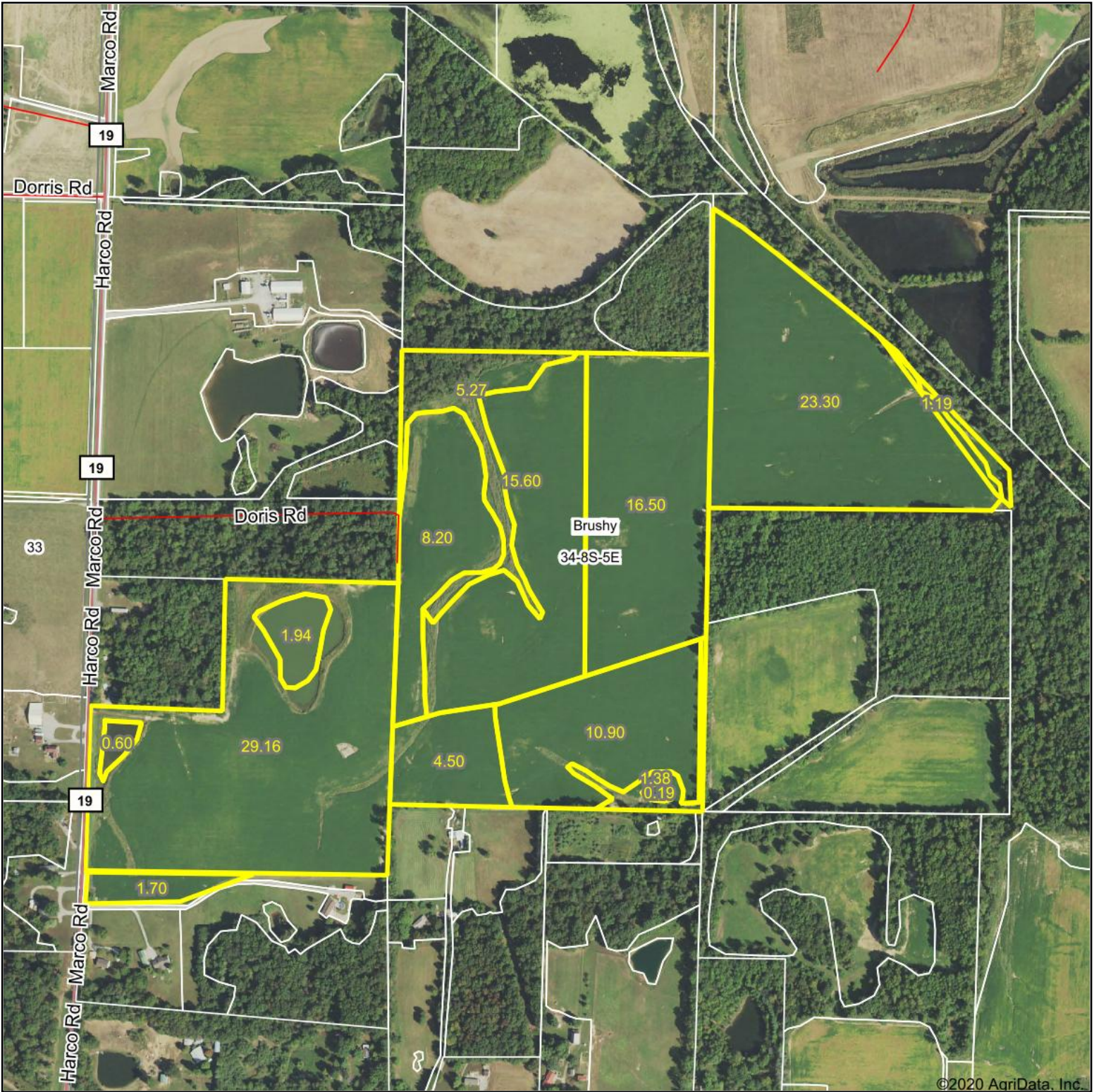
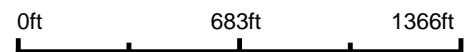


Aerial Map



©2020 AgriData, Inc.

Map Center: 37° 46' 57.58, -88° 38' 41.76



34-8S-5E
Saline County
Illinois

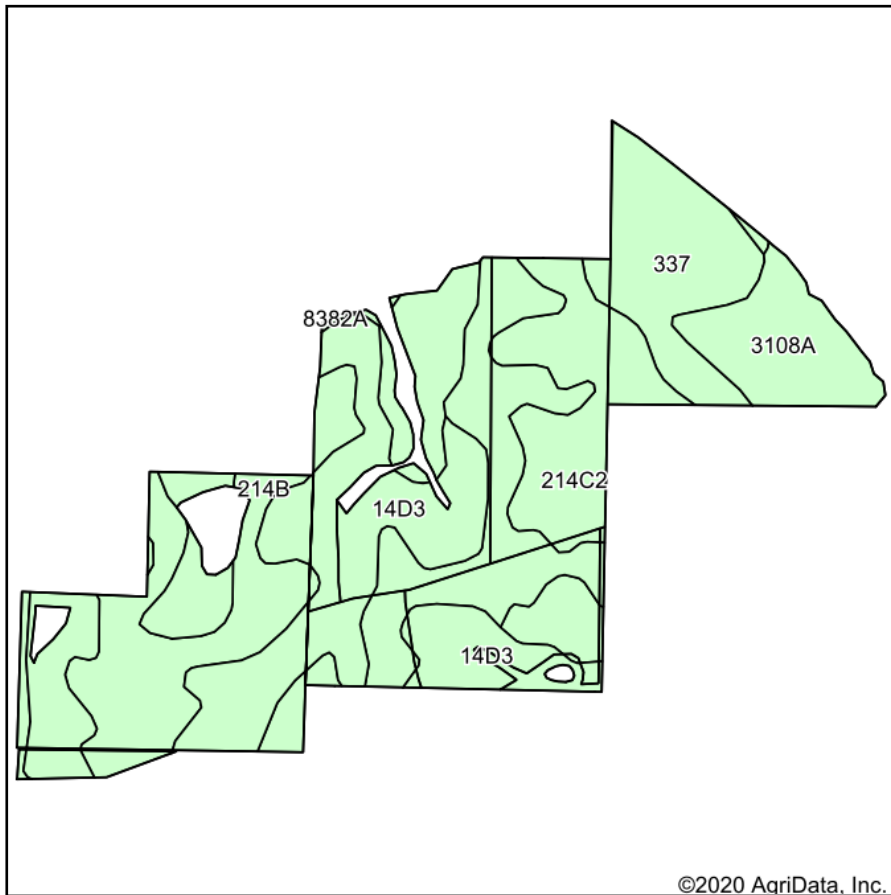


Maps Provided By:
surety
CUSTOMIZED ONLINE MAPPING
© AgriData, Inc. 2020 www.AgriDataInc.com

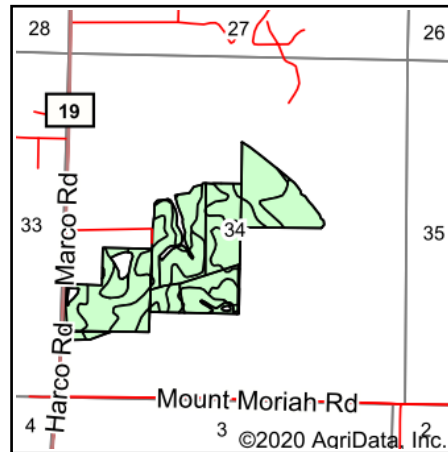
7/22/2020

Field borders provided by Farm Service Agency as of 5/21/2008.

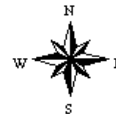
Soils Map



Soils data provided by USDA and NRCS.



State: **Illinois**
 County: **Saline**
 Location: **34-8S-5E**
 Township: **Brushy**
 Acres: **111.24**
 Date: **7/22/2020**



Area Symbol: IL165. Soil Area Version: 14									
Code	Soil Description	Acres	Percent of field	Il. State Productivity Index Legend	Corn Bu/A	Soybeans Bu/A	Wheat Bu/A	Grass-legume e hay, T/A	Crop productivity index for optimum management
**14D3	Ava silt loam, 5 to 12 percent slopes, severely eroded	34.28	30.8%		**100	**33	**41	0.00	**74
**214B	Hosmer silt loam, 2 to 5 percent slopes	33.75	30.3%		**139	**46	**57	0.00	**104
**214C2	Hosmer silt loam, 5 to 10 percent slopes, eroded	21.36	19.2%		**126	**41	**52	0.00	**95
337	Creal silt loam	12.58	11.3%		151	47	59	0.00	110
3108A	Bonnie silt loam, 0 to 2 percent slopes, frequently flooded	8.89	8.0%		149	49	59	4.64	111
8382A	Belknap silt loam, 0 to 2 percent slopes, occasionally flooded	0.38	0.3%		156	52	63	4.89	117
Weighted Average					126.7	41.4	51.5	0.39	94.3

Table: Optimum Crop Productivity Ratings for Illinois Soil by K.R. Olson and J.M. Lang, Office of Research, ACES, University of Illinois at Champaign-Urbana. Version: 1/2/2012 Amended Table S2 B811

Crop yields and productivity indices for optimum management (B811) are maintained at the following NRES web site: <http://soilproductivity.nres.illinois.edu/>

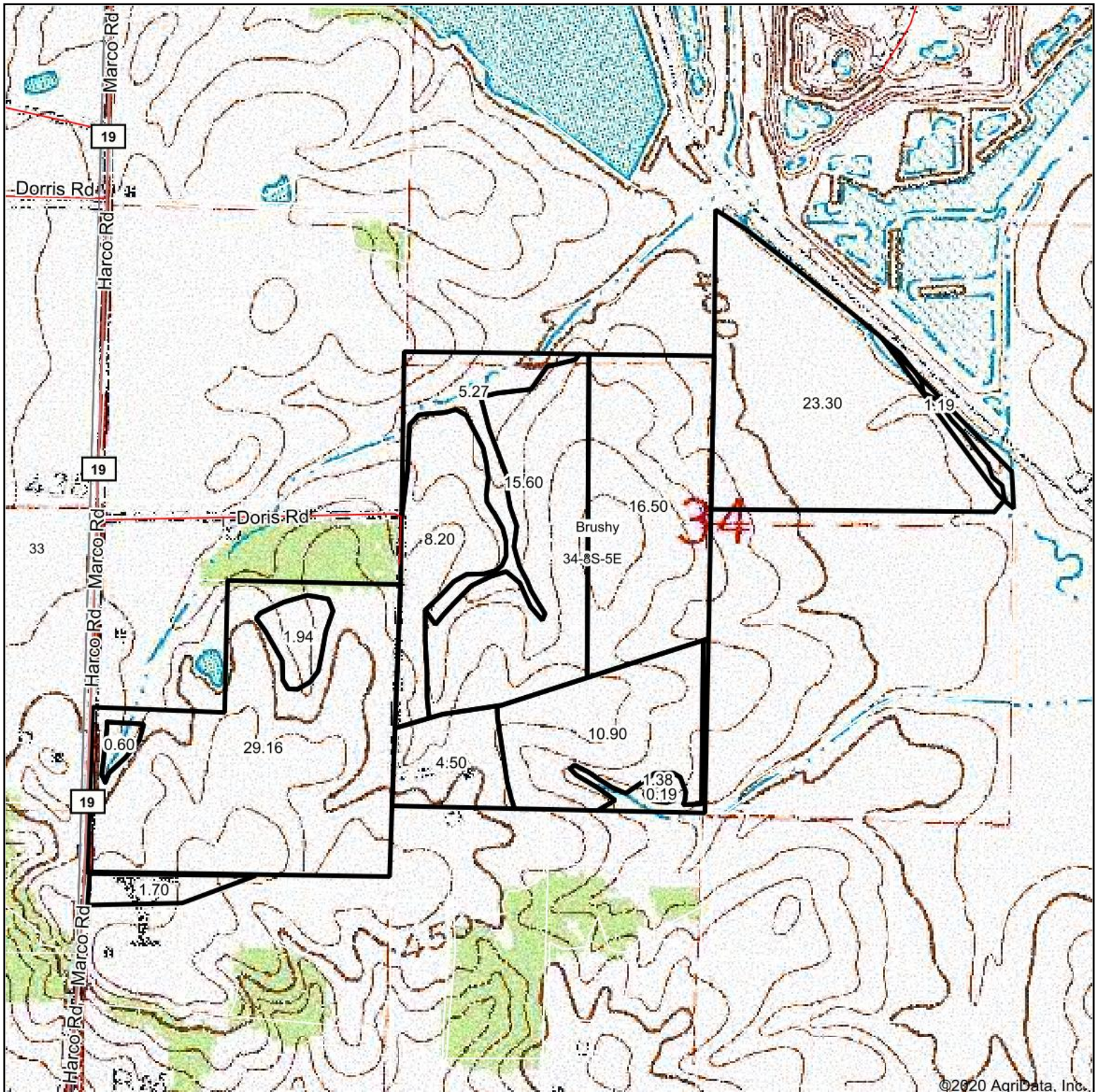
** Indexes adjusted for slope and erosion according to Bulletin 811 Table S3

e Soils in the well drained group were not rated for grass-legume and are shown with a zero "0".

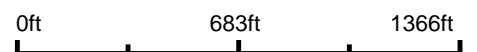
*c: Using Capabilities Class Dominant Condition Aggregation Method

Soils data provided by USDA and NRCS. Soils data provided by University of Illinois at Champaign-Urbana.

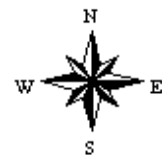
Topography Map



map center: 37° 46' 57.58, -88° 38' 41.76



34-8S-5E
Saline County
Illinois



7/22/2020



Maps Provided By:



© AgriData, Inc. 2020

www.AgridataInc.com