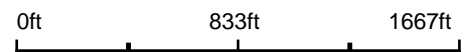


# Aerial Map



©2019 AgriData, Inc.

Map Center: 38° 11' 20.24, -90° 17' 11.49



**14-4S-11W**  
**Monroe County**  
**Illinois**



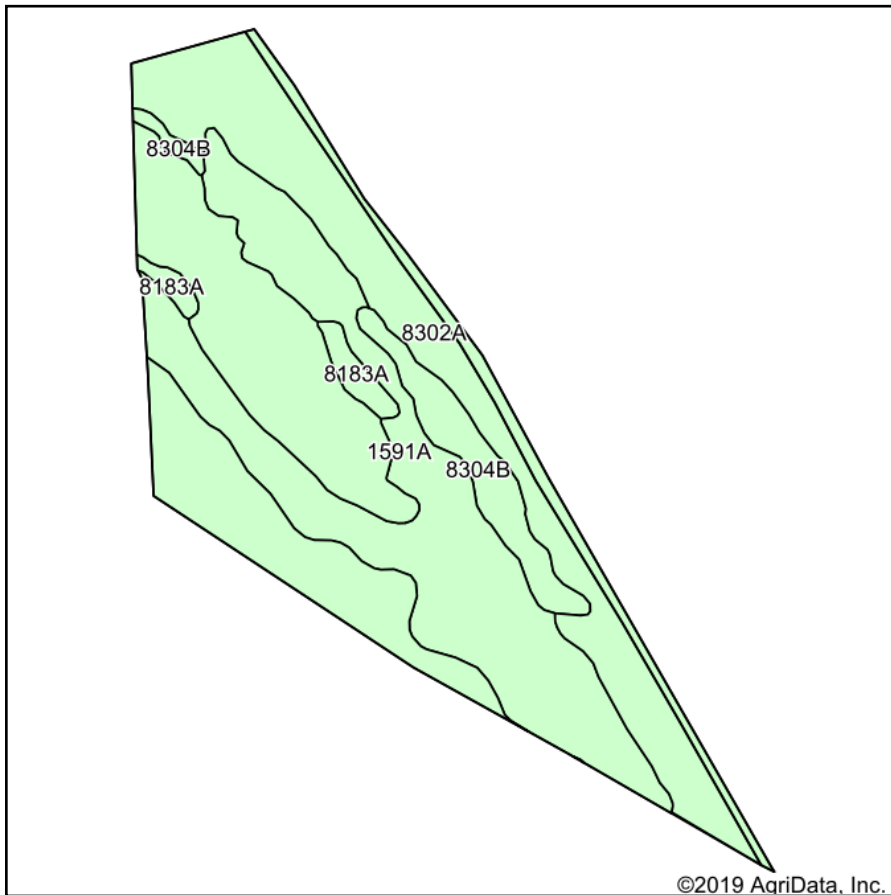
Maps Provided By:  
**surety**  
CUSTOMIZED ONLINE MAPPING  
© AgriData, Inc. 2019      www.AgriDataInc.com

11/26/2019

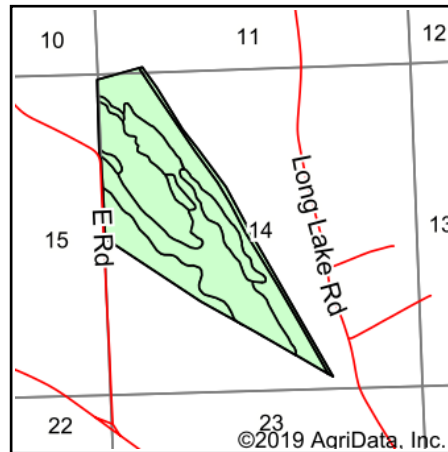


Boundary

# Soils Map



Soils data provided by USDA and NRCS.



State: **Illinois**  
 County: **Monroe**  
 Location: **14-4S-11W**  
 Township: **Precinct 15**  
 Acres: **173.07**  
 Date: **11/26/2019**

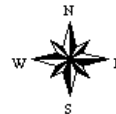


Maps Provided By:



© AgriData, Inc. 2019

www.AgriDataInc.com



Area Symbol: IL133. Soil Area Version: 12								
Code	Soil Description	Acres	Percent of field	Il. State Productivity Index Legend	Corn Bu/A	Soybeans Bu/A	Wheat Bu/A	Crop productivity index for optimum management
8302A	Ambraw silty clay loam, 0 to 2 percent slopes, occasionally flooded	101.49	58.6%		154	50	61	114
1591A	Fults silty clay, undrained, 0 to 2 percent slopes, occasionally flooded	56.55	32.7%		155	50	59	115
8304B	Landes very fine sandy loam, 2 to 5 percent slopes, occasionally flooded	11.37	6.6%		135	45	55	100
8183A	Shaffton clay loam, 0 to 2 percent slopes, occasionally flooded	3.66	2.1%		155	51	60	116
<b>Weighted Average</b>					<b>153.1</b>	<b>49.7</b>	<b>59.9</b>	<b>113.4</b>

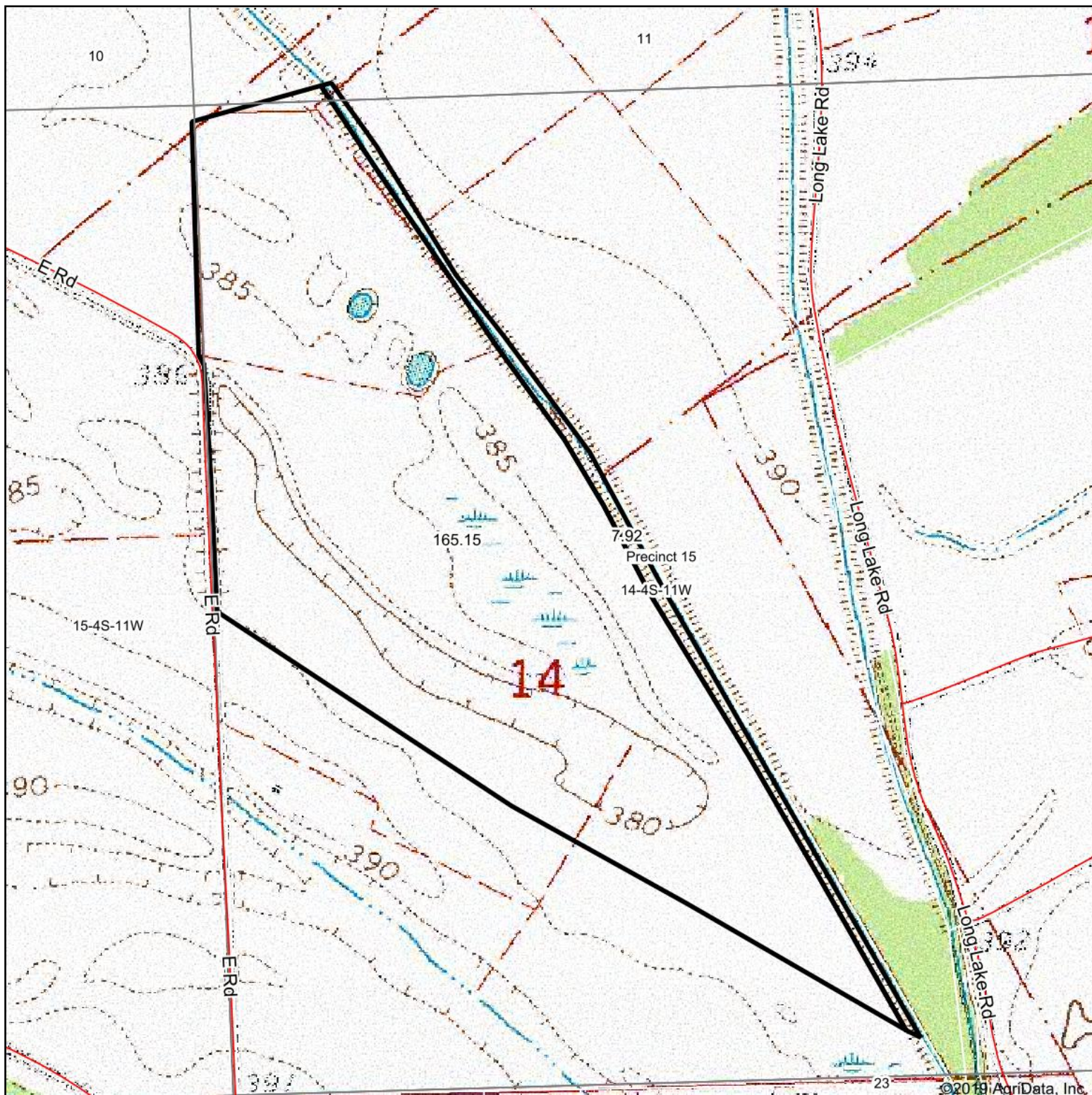
**Table: Optimum Crop Productivity Ratings for Illinois Soil by K.R. Olson and J.M. Lang, Office of Research, ACES, University of Illinois at Champaign-Urbana.** Version: 1/2/2012 Amended Table S2 B811

Crop yields and productivity indices for optimum management (B811) are maintained at the following NRES web site: <http://soilproductivity.nres.illinois.edu/>

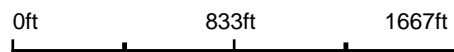
\*\* Indexes adjusted for slope and erosion according to Bulletin 811 Table S3

Soils data provided by USDA and NRCS. Soils data provided by University of Illinois at Champaign-Urbana.

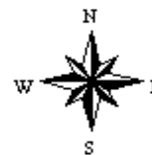
# Topography Map



map center: 38° 11' 20.24, -90° 17' 11.49



**14-4S-11W**  
**Monroe County**  
**Illinois**



11/26/2019