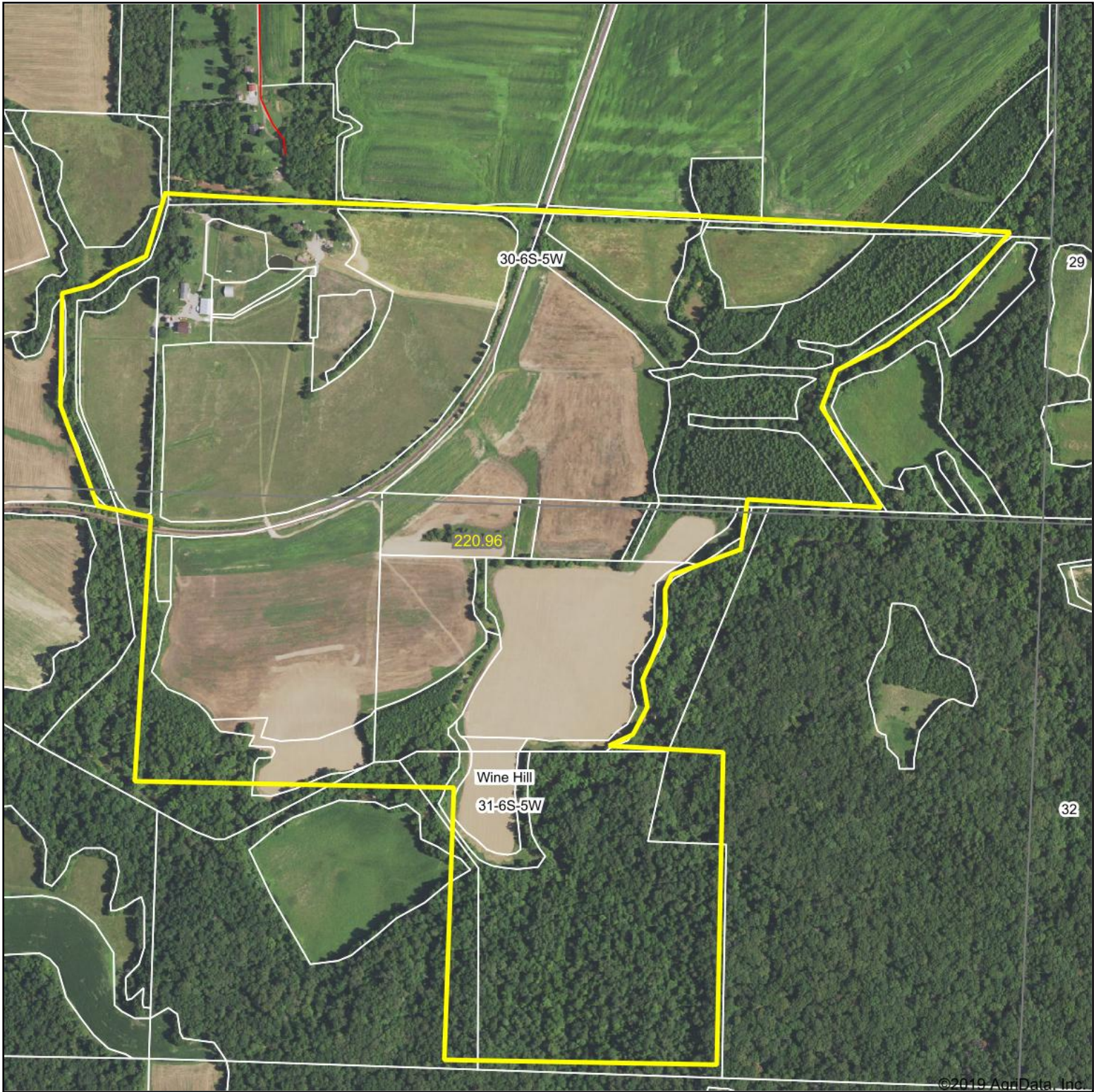
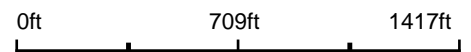


Aerial Map



©2019 AgriData, Inc.

Map Center: 37° 58' 12.38, -89° 41' 39.58



31-6S-5W
Randolph County
Illinois



5/6/2020



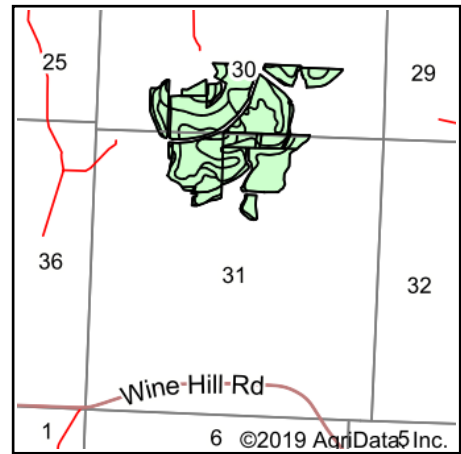
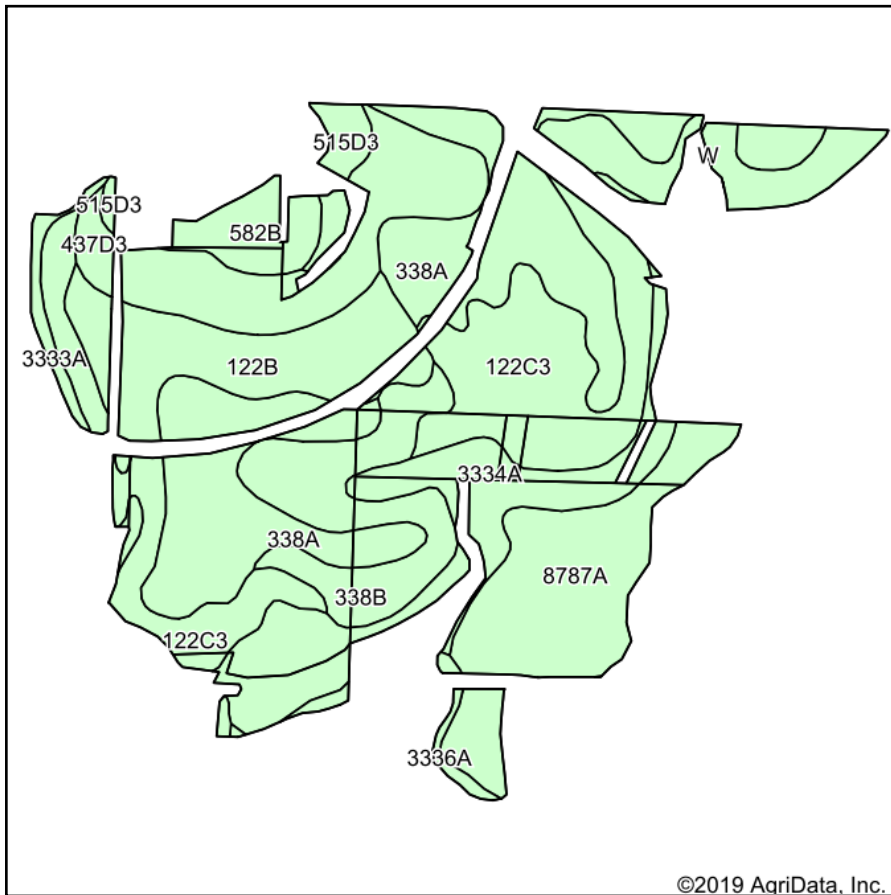
Maps Provided By:



© AgriData, Inc. 2019 www.AgriDataInc.com

Field borders provided by Farm Service Agency as of 5/21/2008.

Soils Map



State: **Illinois**
 County: **Randolph**
 Location: **31-6S-5W**
 Township: **Wine Hill**
 Acres: **121.77**
 Date: **5/6/2020**



Soils data provided by USDA and NRCS.

©2019 AgriData, Inc.

Area Symbol: IL157, Soil Area Version: 13								
Code	Soil Description	Acres	Percent of field	Il. State Productivity Index Legend	Corn Bu/A	Soybeans Bu/A	Wheat Bu/A	Crop productivity index for optimum management
**122C3	Colp silty clay loam, 5 to 10 percent slopes, severely eroded	27.34	22.5%		**99	**31	**41	**73
338A	Hurst silt loam, 0 to 2 percent slopes	25.61	21.0%		134	44	55	100
8787A	Banlic silt loam, 0 to 2 percent slopes, occasionally flooded	14.47	11.9%		142	47	56	106
3334A	Birds silt loam, 0 to 2 percent slopes, frequently flooded	12.76	10.5%		157	51	61	117
**437D3	Redbud silty clay loam, 10 to 18 percent slopes, severely eroded	11.76	9.7%		**126	**39	**51	**92
**122B	Colp silt loam, 2 to 5 percent slopes	11.04	9.1%		**133	**42	**55	**97
**338B	Hurst silt loam, 2 to 5 percent slopes	10.23	8.4%		**133	**44	**54	**99
**582B	Homen silt loam, 2 to 5 percent slopes	3.65	3.0%		**149	**47	**55	**108
**515D3	Bunkum silty clay loam, 10 to 18 percent slopes, severely eroded	2.16	1.8%		**118	**41	**45	**89
3333A	Wakeland silt loam, 0 to 2 percent slopes, frequently flooded	1.74	1.4%		174	56	68	128
3336A	Wilbur silt loam, 0 to 2 percent slopes, frequently flooded	1.01	0.8%		174	56	66	128
Weighted Average					129.6	41.8	52.2	96

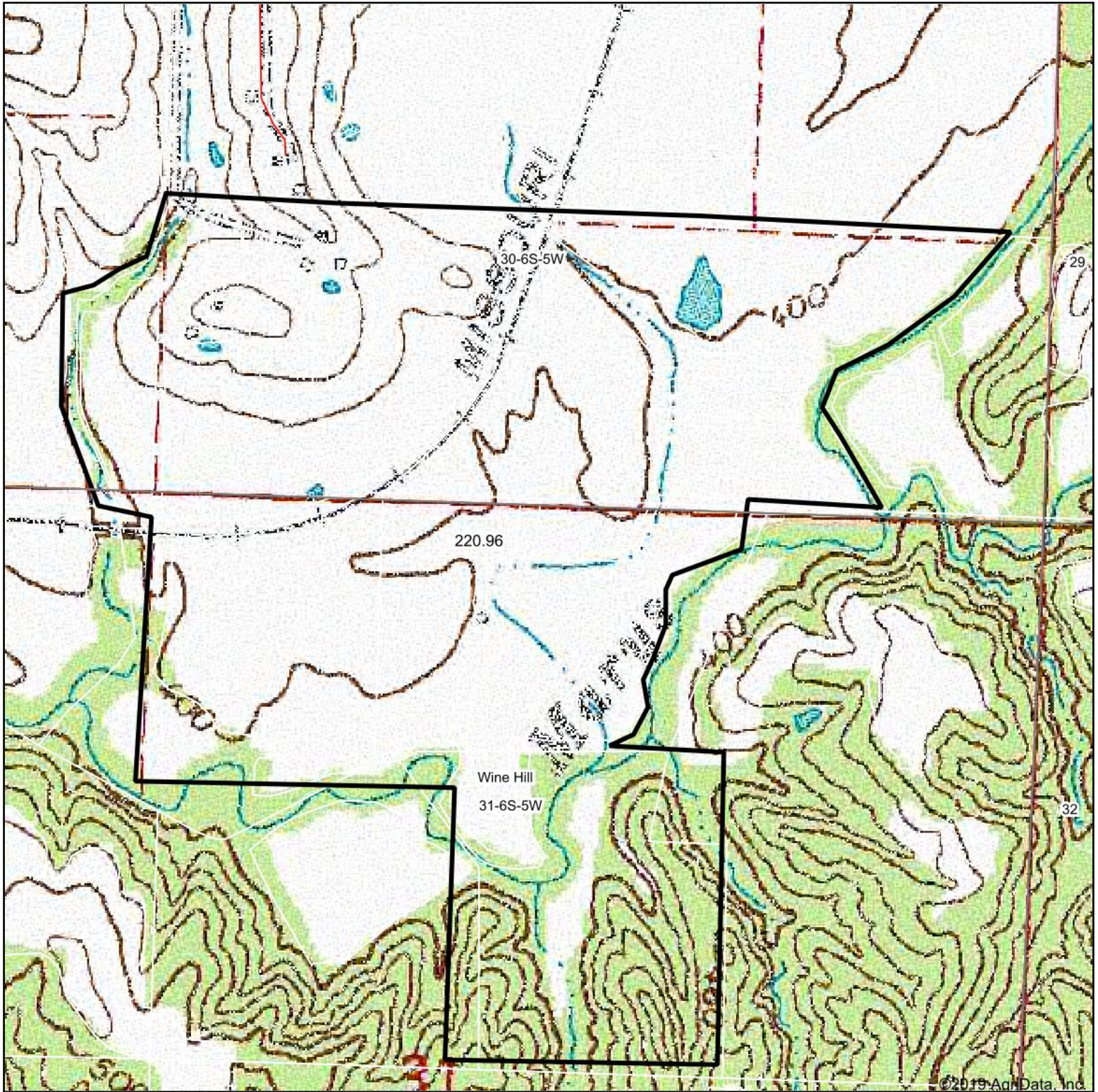
Table: Optimum Crop Productivity Ratings for Illinois Soil by K.R. Olson and J.M. Lang, Office of Research, ACES, University of Illinois at Champaign-Urbana. Version: 1/2/2012 Amended Table S2 B811

Crop yields and productivity indices for optimum management (B811) are maintained at the following NRES web site: <http://soilproductivity.nres.illinois.edu/>

** Indexes adjusted for slope and erosion according to Bulletin 811 Table S3

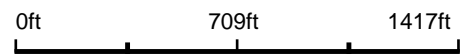
Soils data provided by USDA and NRCS. Soils data provided by University of Illinois at Champaign-Urbana.

Topography Map



©2019 AgriData, Inc.

map center: 37° 58' 12.38, -89° 41' 39.58

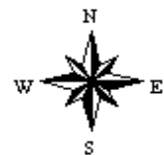


Maps Provided By:



© AgriData, Inc. 2019 www.AgridataInc.com

31-6S-5W
Randolph County
Illinois



5/6/2020