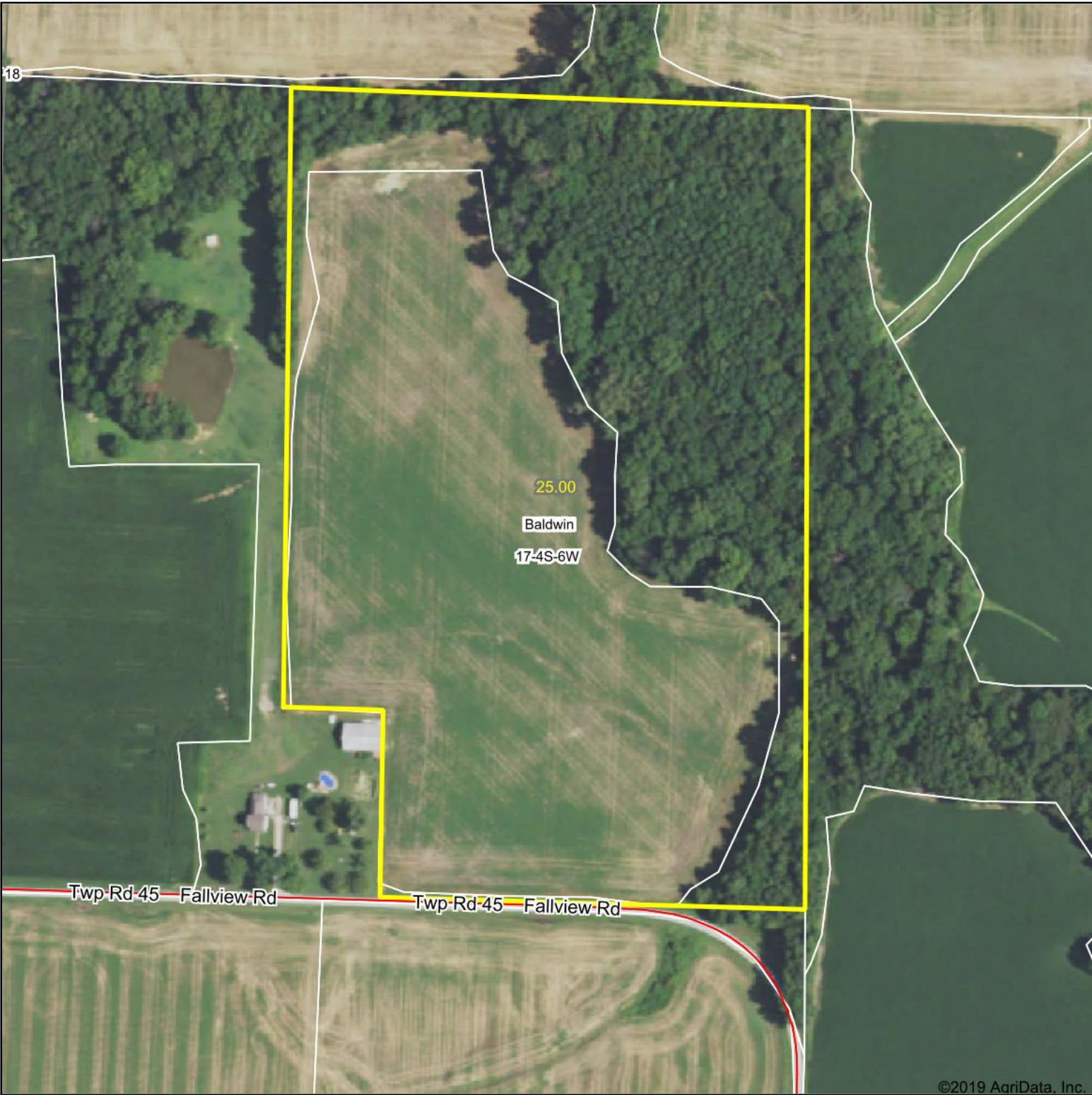
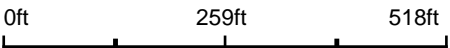


Aerial Map



©2019 AgriData, Inc.

Map Center: 38° 10' 53.55, -89° 47' 41.24



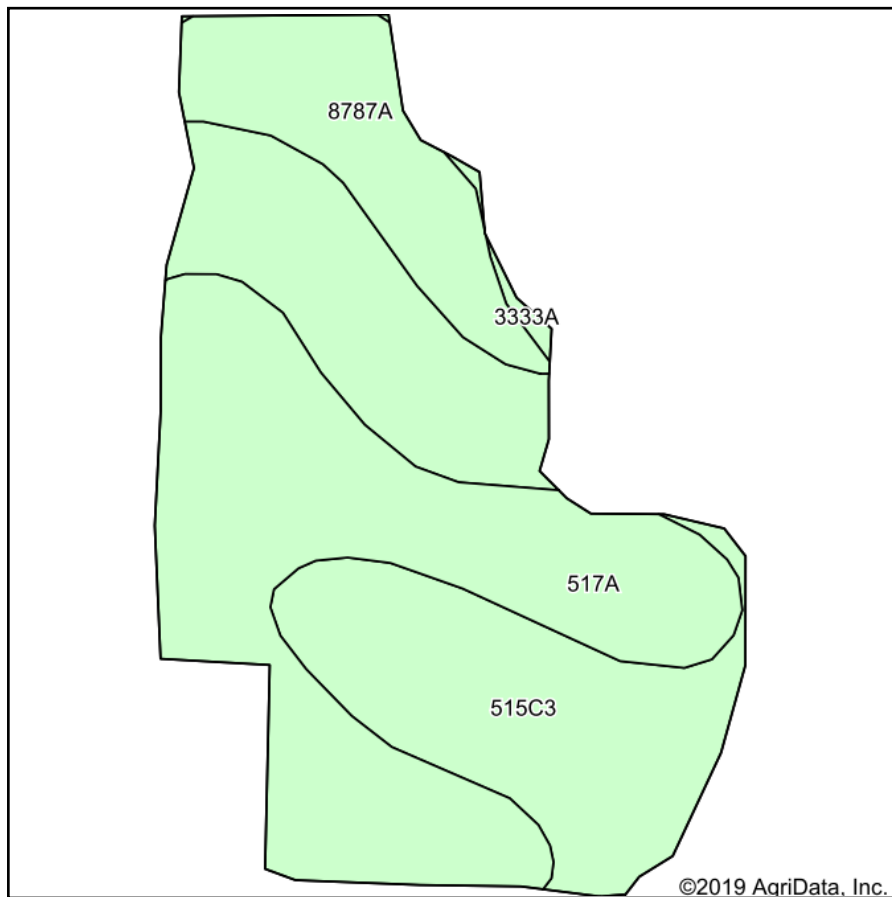
Maps Provided By:
 **surety**[®]
CUSTOMIZED ONLINE MAPPING
© AgriData, Inc. 2019 www.AgriDataInc.com

17-4S-6W
Randolph County
Illinois

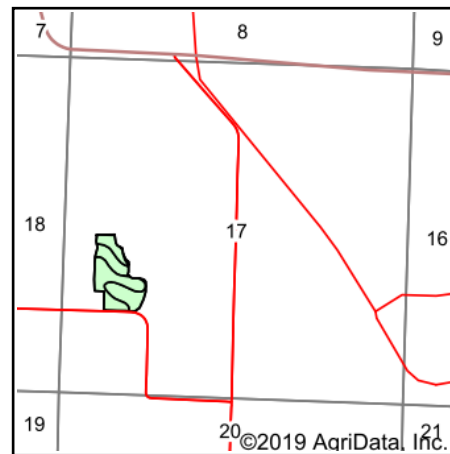


4/27/2020

Soils Map



Soils data provided by USDA and NRCS.

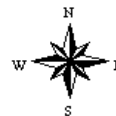


State: **Illinois**
 County: **Randolph**
 Location: **17-4S-6W**
 Township: **Baldwin**
 Acres: **14.91**
 Date: **4/27/2020**



Maps Provided By:

 © AgriData, Inc. 2019 www.AgriDataInc.com



Area Symbol: IL157, Soil Area Version: 13								
Code	Soil Description	Acres	Percent of field	Il. State Productivity Index Legend	Corn Bu/A	Soybeans Bu/A	Wheat Bu/A	Crop productivity index for optimum management
517A	Marine silt loam, 0 to 2 percent slopes	6.43	43.1%		144	45	56	104
**515C3	Bunkum silty clay loam, 5 to 10 percent slopes, severely eroded	6.30	42.3%		**126	**43	**48	**95
8787A	Banlic silt loam, 0 to 2 percent slopes, occasionally flooded	2.09	14.0%		142	47	56	106
3333A	Wakeland silt loam, 0 to 2 percent slopes, frequently flooded	0.09	0.6%		174	56	68	128
Weighted Average					136.3	44.5	52.7	100.6

Table: Optimum Crop Productivity Ratings for Illinois Soil by K.R. Olson and J.M. Lang, Office of Research, ACES, University of Illinois at Champaign-Urbana. Version: 1/2/2012 Amended Table S2 B811

Crop yields and productivity indices for optimum management (B811) are maintained at the following NRES web site: <http://soilproductivity.nres.illinois.edu/>

** Indexes adjusted for slope and erosion according to Bulletin 811 Table S3

Soils data provided by USDA and NRCS. Soils data provided by University of Illinois at Champaign-Urbana.