

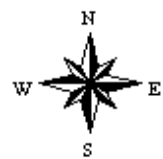
Aerial Map



Map Center: 38° 29' 37, -88° 24' 16.58

0ft 194ft 387ft

27-1N-7E
Wayne County
Illinois



4/11/2020



Maps Provided By:



© AgriData, Inc. 2019

www.AgriDataInc.com

Field borders provided by Farm Service Agency as of 5/21/2008.

Aerial Map

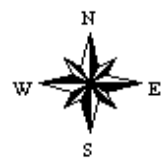


©2019 AgriData, Inc.

Map Center: 38° 29' 37, -88° 24' 16.7

0ft 410ft 820ft

27-1N-7E
Wayne County
Illinois



4/11/2020



Maps Provided By:

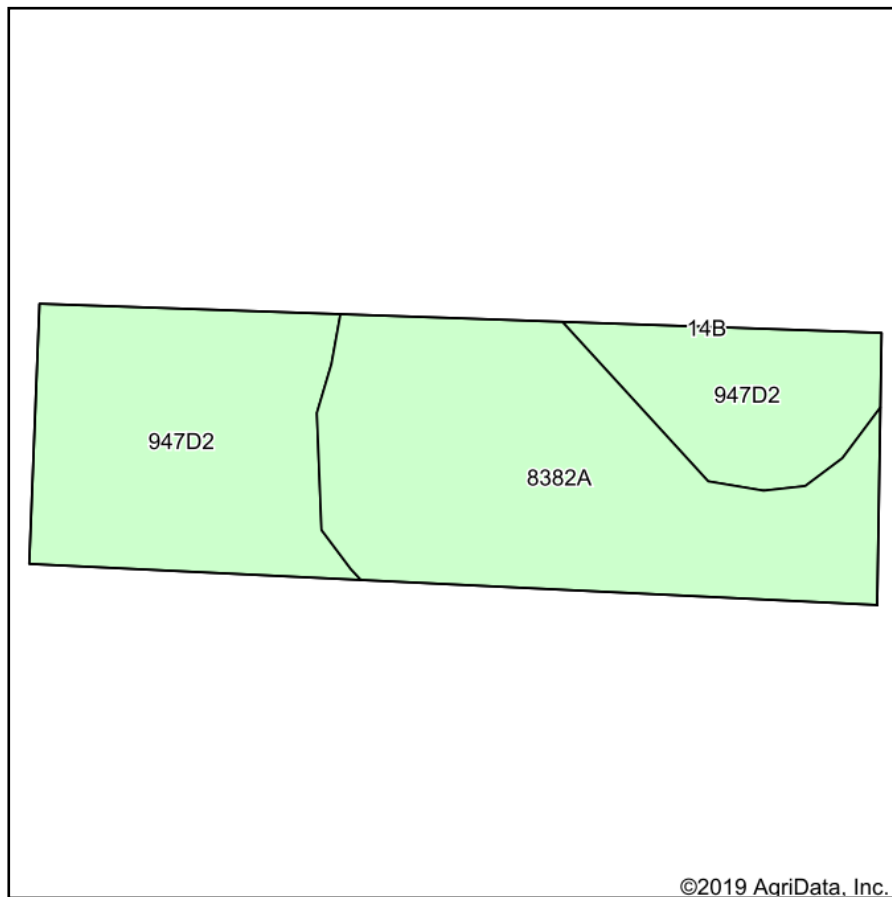


© AgriData, Inc. 2019

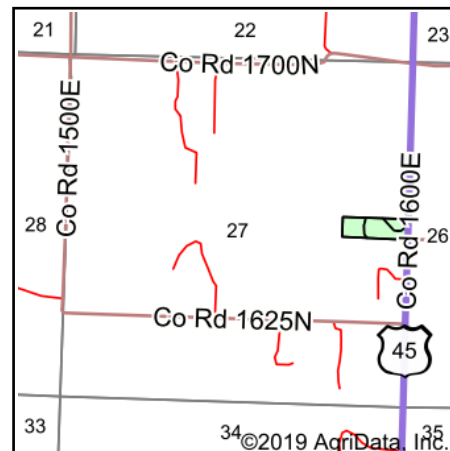
www.AgriDataInc.com

Field borders provided by Farm Service Agency as of 5/21/2008.

Soils Map



Soils data provided by USDA and NRCS.



State: **Illinois**
 County: **Wayne**
 Location: **27-1N-7E**
 Township: **Bedford**
 Acres: **7.29**
 Date: **4/11/2020**



Maps Provided By:

 © AgriData, Inc. 2019 www.AgriDataInc.com



Area Symbol: IL191, Soil Area Version: 17

Code	Soil Description	Acres	Percent of field	Il. State Productivity Index Legend	Corn Bu/A	Soybeans Bu/A	Wheat Bu/A	Grass-legume hay, T/A	Crop productivity index for optimum management
**947D2	Hickory-Passport silt loams, 10 to 18 percent slopes, eroded	3.65	50.1%		**119	**39	**50	**3.18	**88
8382A	Belknap silt loam, 0 to 2 percent slopes, occasionally flooded	3.64	49.9%		156	52	63	4.89	117
Weighted Average					137.5	45.5	56.5	4.03	102.5

Table: Optimum Crop Productivity Ratings for Illinois Soil by K.R. Olson and J.M. Lang, Office of Research, ACES, University of Illinois at Champaign-Urbana. Version: 1/2/2012 Amended Table S2 B811

Crop yields and productivity indices for optimum management (B811) are maintained at the following NRES web site: <http://soilproductivity.nres.illinois.edu/>

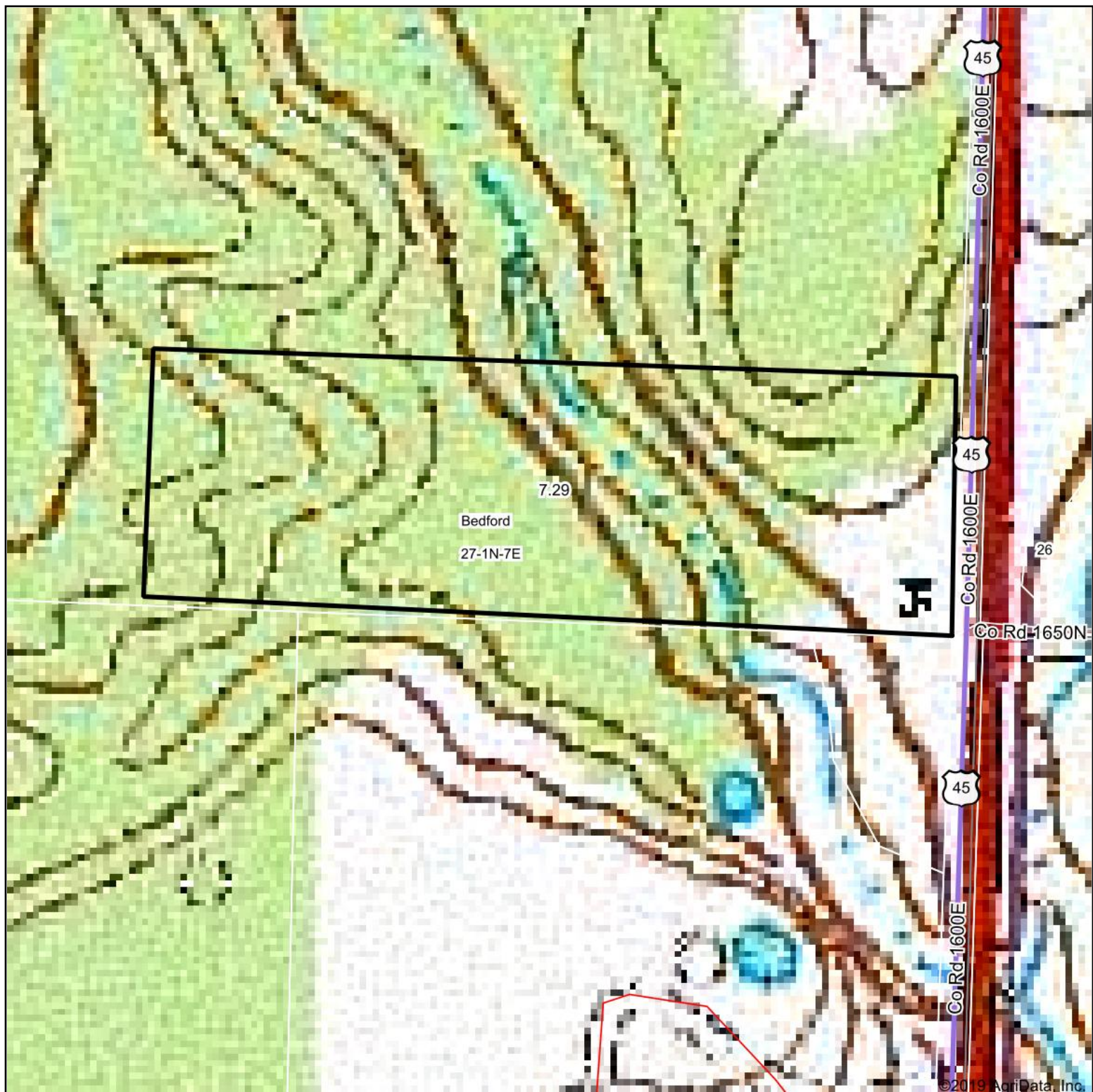
** Indexes adjusted for slope and erosion according to Bulletin 811 Table S3

e Soils in the well drained group were not rated for grass-legume and are shown with a zero "0".

*c: Using Capabilities Class Dominant Condition Aggregation Method

Soils data provided by USDA and NRCS. Soils data provided by University of Illinois at Champaign-Urbana.

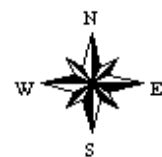
Topography Map



map center: 38° 29' 37, -88° 24' 16.58

0ft 194ft 387ft

27-1N-7E
Wayne County
Illinois



4/11/2020



Maps Provided By:



© AgriData, Inc. 2019

www.AgriDataInc.com

Field borders provided by Farm Service Agency as of 5/21/2008.