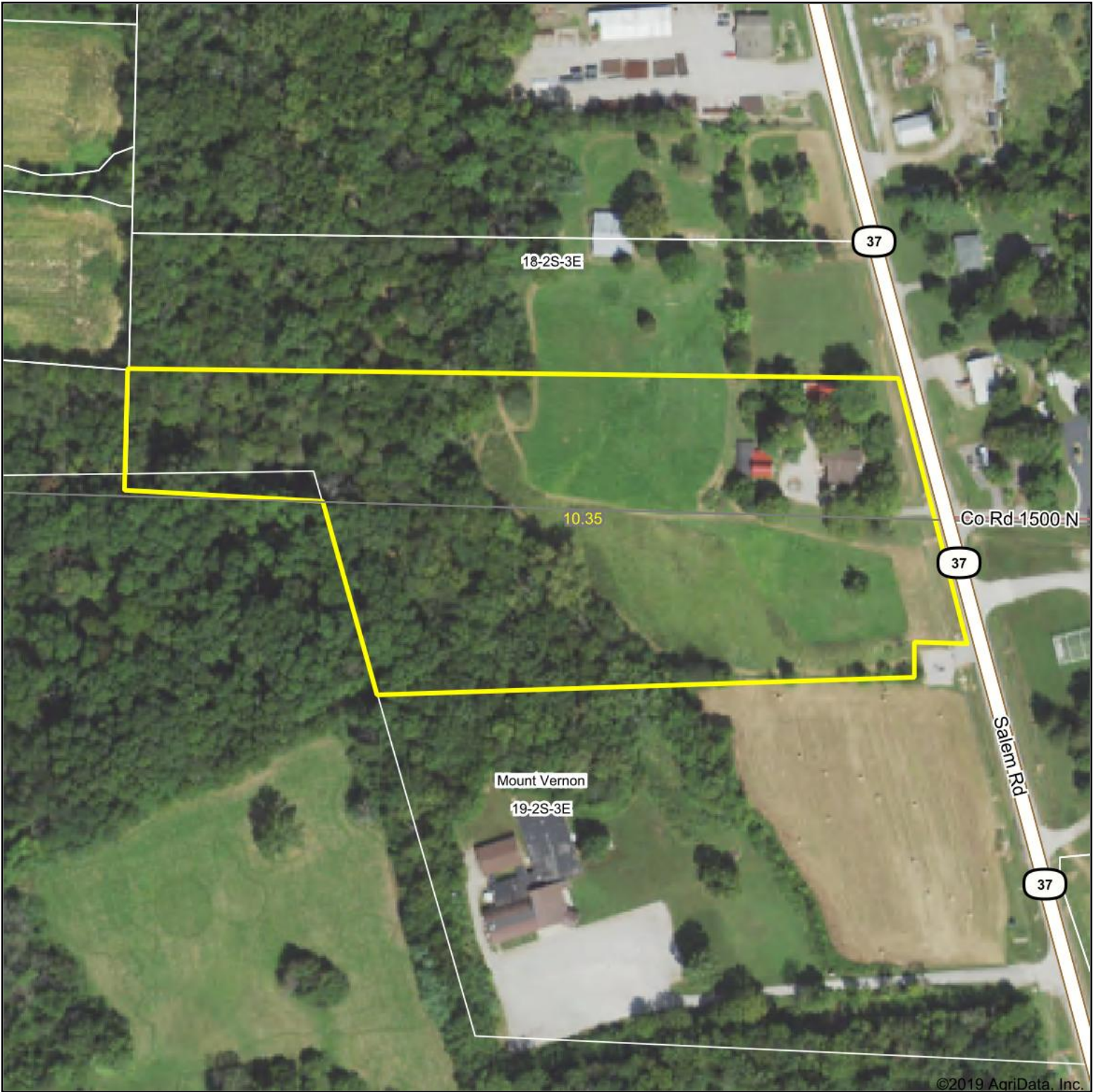


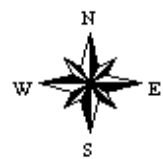
Aerial Map



Map Center: 38° 20' 39.79, -88° 55' 12.27



19-2S-3E
Jefferson County
Illinois



4/12/2020



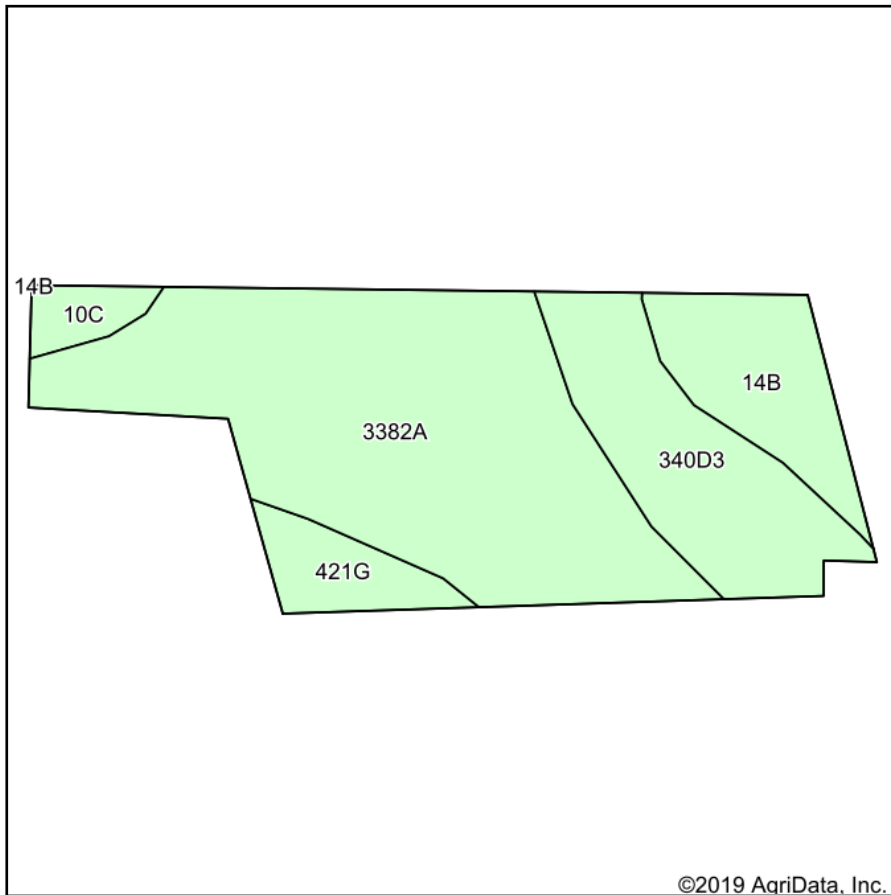
Maps Provided By:



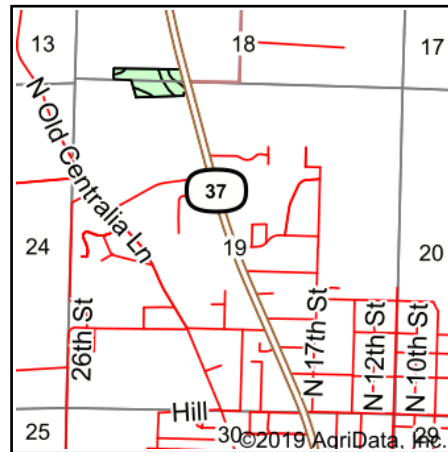
© AgriData, Inc. 2019 www.AgriDataInc.com

Field borders provided by Farm Service Agency as of 5/21/2008.

Soils Map



Soils data provided by USDA and NRCS.



State: **Illinois**
 County: **Jefferson**
 Location: **19-2S-3E**
 Township: **Mount Vernon**
 Acres: **10.35**
 Date: **4/12/2020**

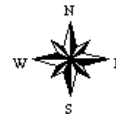


Maps Provided By:



© AgriData, Inc. 2019

www.AgriDataInc.com



Area Symbol: IL081. Soil Area Version: 12									
Code	Soil Description	Acres	Percent of field	Il. State Productivity Index Legend	Corn Bu/A	Soybeans Bu/A	Wheat Bu/A	Grass-legume hay, T/A	eCrop productivity index for optimum management
3382A	Belknap silt loam, 0 to 2 percent slopes, frequently flooded	5.95	57.5%		156	52	63	4.89	117
**340D3	Zanesville silt loam, till plain, 10 to 18 percent slopes, severely eroded	2.13	20.6%		**86	**30	**37	**2.68	**65
**14B	Ava silt loam, 2 to 5 percent slopes	1.31	12.7%		**134	**44	**54	0.00	**99
**421G	Kell silt loam, 35 to 60 percent slopes	0.64	6.2%		**60	**20	**23	**1.87	**45
**10C	Plumfield silty clay loam, 5 to 10 percent slopes	0.32	3.1%		**103	**34	**39	**3.37	**78
Weighted Average					131.2	43.9	53.3	3.58	98.4

Table: Optimum Crop Productivity Ratings for Illinois Soil by K.R. Olson and J.M. Lang, Office of Research, ACES, University of Illinois at Champaign-Urbana. Version: 1/2/2012 Amended Table S2 B811

Crop yields and productivity indices for optimum management (B811) are maintained at the following NRES web site: <http://soilproductivity.nres.illinois.edu/>

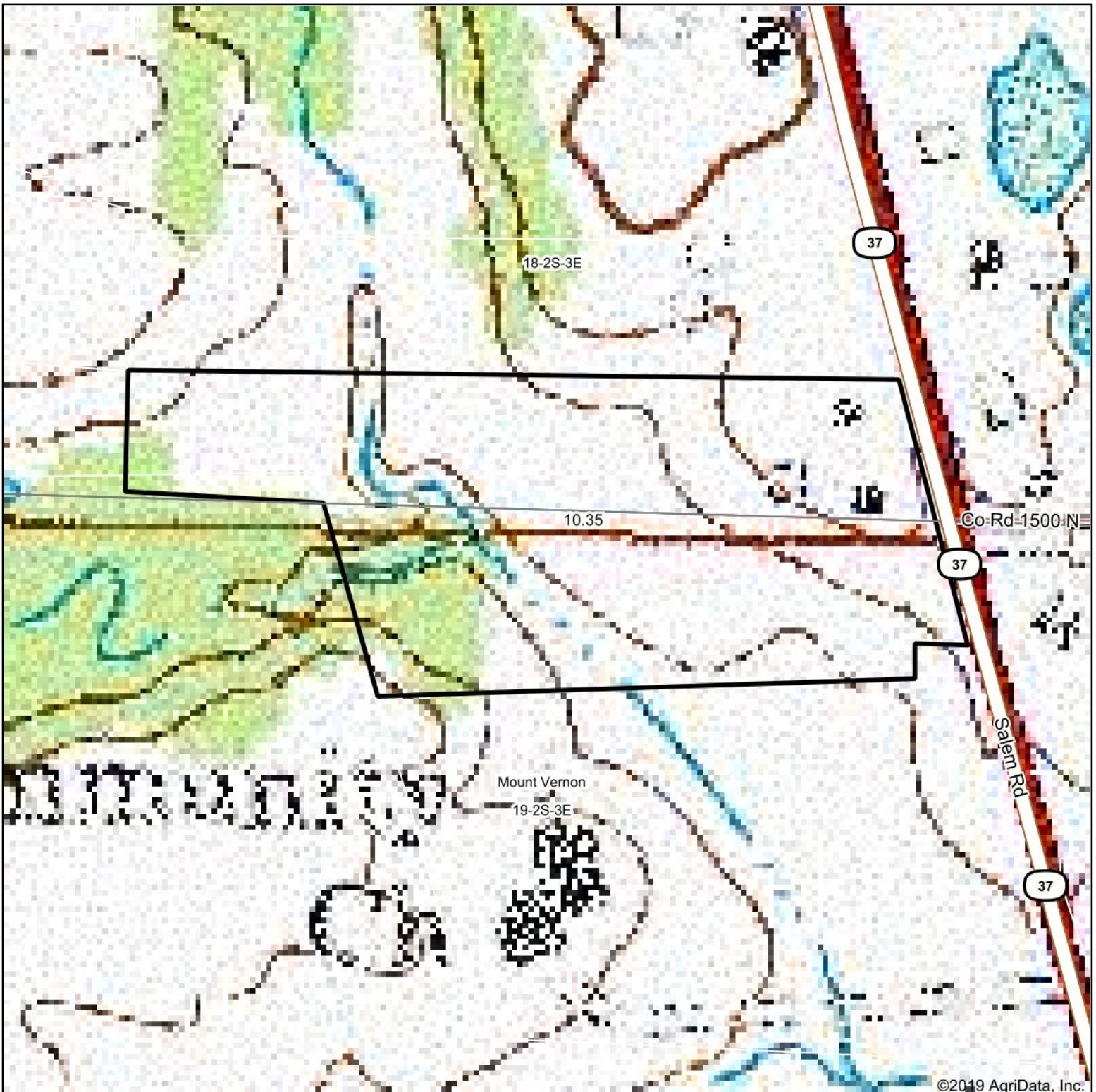
** Indexes adjusted for slope and erosion according to Bulletin 811 Table S3

e Soils in the well drained group were not rated for grass-legume and are shown with a zero "0".

*c: Using Capabilities Class Dominant Condition Aggregation Method

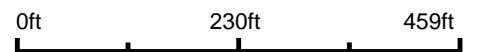
Soils data provided by USDA and NRCS. Soils data provided by University of Illinois at Champaign-Urbana.

Topography Map



©2019 AgriData, Inc.

map center: 38° 20' 39.79, -88° 55' 12.27

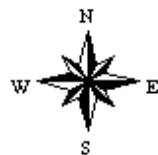


Maps Provided By:



© AgriData, Inc. 2019 www.AgridataInc.com

19-2S-3E
Jefferson County
Illinois



4/12/2020