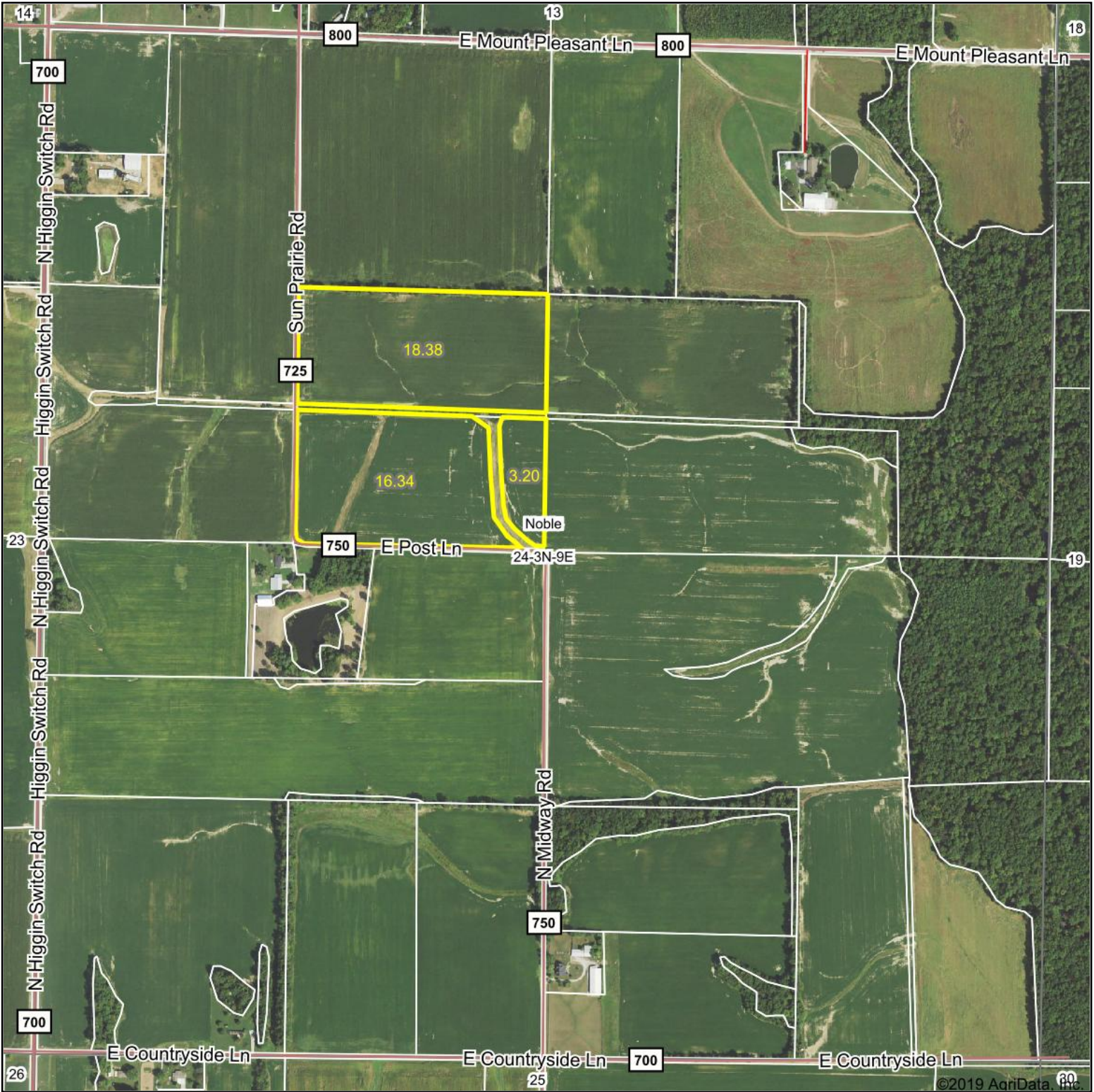


Aerial Map



©2019 AgriData, Inc.

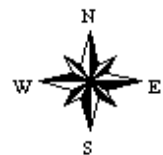


Brett Berger, ARA

Map Center: 38.678506, -88.158248



24-3N-9E
Richland County
Illinois



4/3/2020

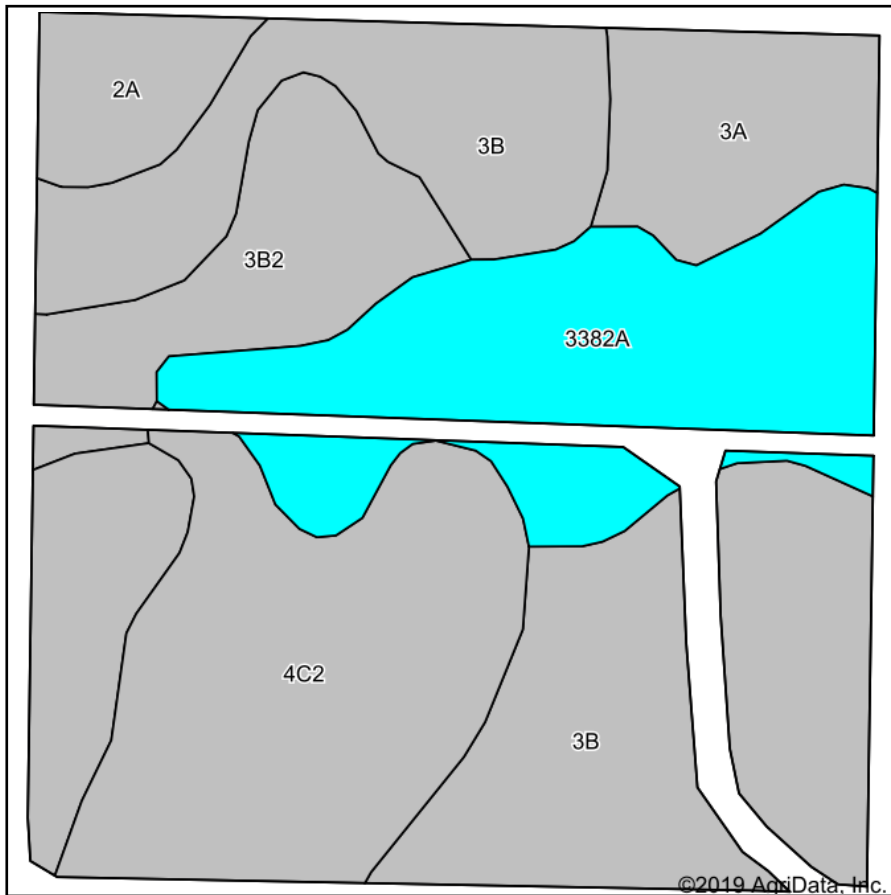
Maps Provided By:



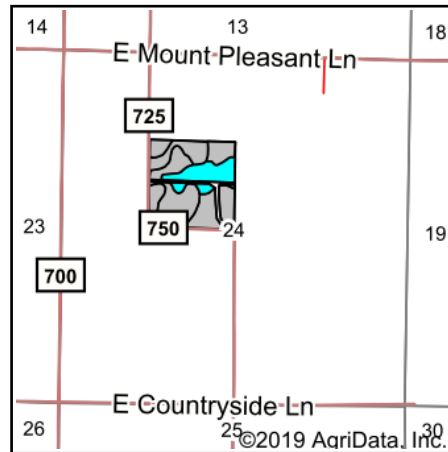
© AgriData, Inc. 2019 www.AgriDataInc.com

Field borders provided by Farm Service Agency as of 5/21/2008.

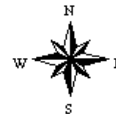
Soils Map



Soils data provided by USDA and NRCS.



State: **Illinois**
 County: **Richland**
 Location: **24-3N-9E**
 Township: **Noble**
 Acres: **37.92**
 Date: **4/3/2020**



Area Symbol: IL159, Soil Area Version: 11									
Code	Soil Description	Acres	Percent of field	Il. State Productivity Index Legend	Corn Bu/A	Soybeans Bu/A	Wheat Bu/A	Crop productivity index for optimum management	
**3B	Hoyleton silt loam, 2 to 5 percent slopes	14.48	38.2%		**145	**46	**57	**107	
**4C2	Richview silt loam, 5 to 10 percent slopes, eroded	8.01	21.1%		**141	**45	**56	**103	
3382A	Belknap silt loam, 0 to 2 percent slopes, frequently flooded	7.44	19.6%		156	52	63	117	
**3B2	Hoyleton silt loam, 2 to 5 percent slopes, eroded	3.50	9.2%		**139	**44	**55	**103	
3A	Hoyleton silt loam, 0 to 2 percent slopes	2.91	7.7%		146	46	58	108	
2A	Cisne silt loam, 0 to 2 percent slopes	1.58	4.2%		149	46	59	109	
Weighted Average					146	46.8	57.9	107.9	

Table: Optimum Crop Productivity Ratings for Illinois Soil by K.R. Olson and J.M. Lang, Office of Research, ACES, University of Illinois at Champaign-Urbana. Version: 1/2/2012 Amended Table S2 B811
 Crop yields and productivity indices for optimum management (B811) are maintained at the following NRES web site: <http://soilproductivity.nres.illinois.edu/>
 ** Indexes adjusted for slope and erosion according to Bulletin 811 Table S3
 *c: Using Capabilities Class Dominant Condition Aggregation Method
 Soils data provided by USDA and NRCS. Soils data provided by University of Illinois at Champaign-Urbana.