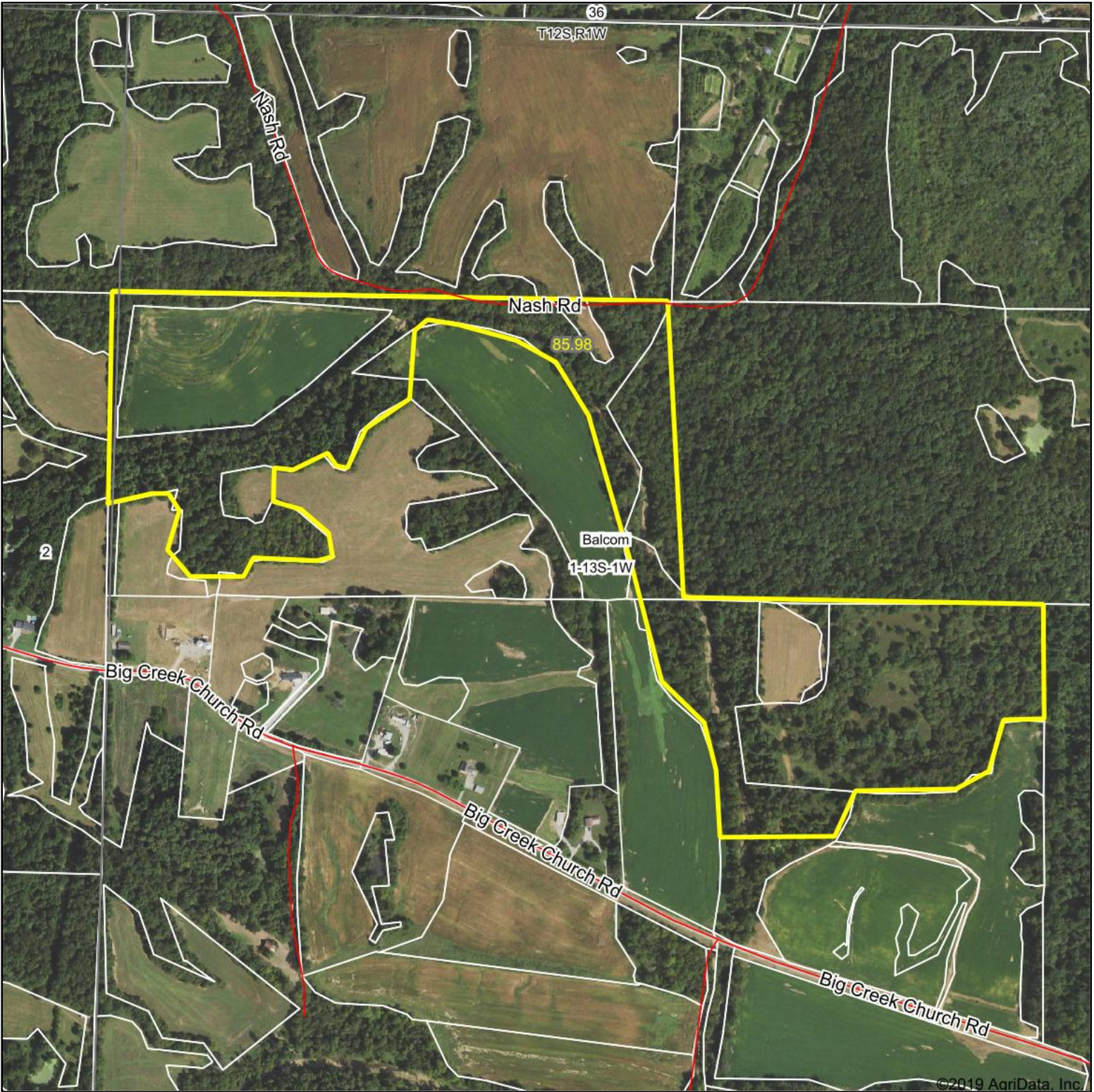
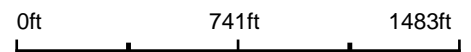


Aerial Map



Map Center: 37° 24' 58.63, -89° 10' 3.18



1-13S-1W
Union County
Illinois

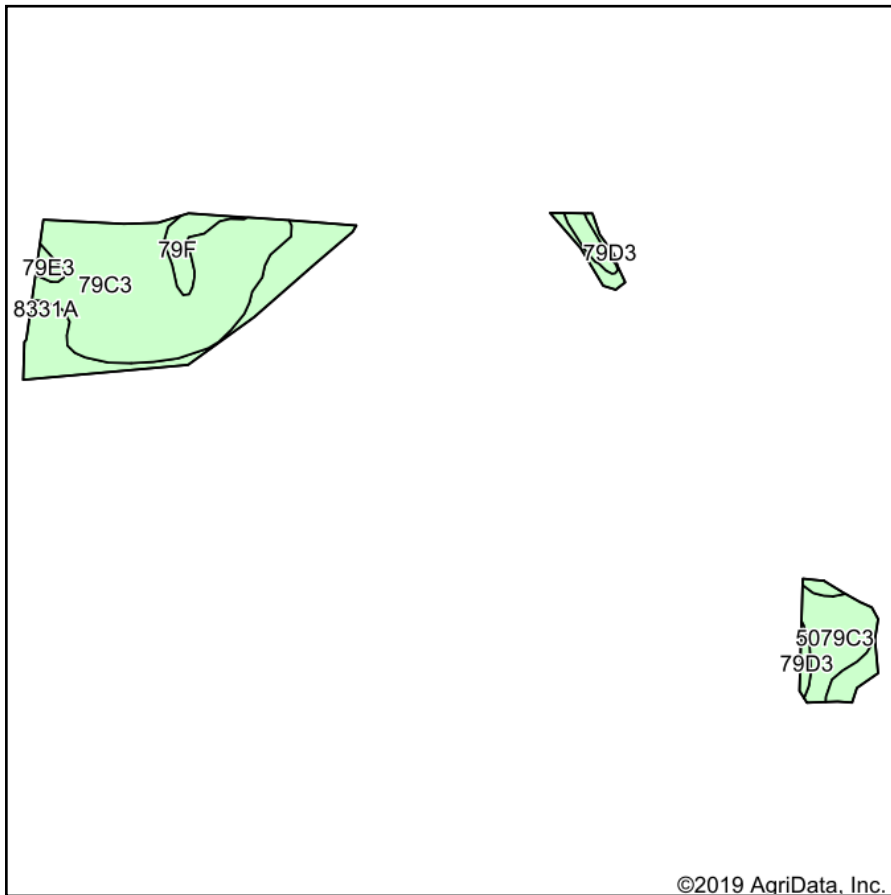


3/23/2020

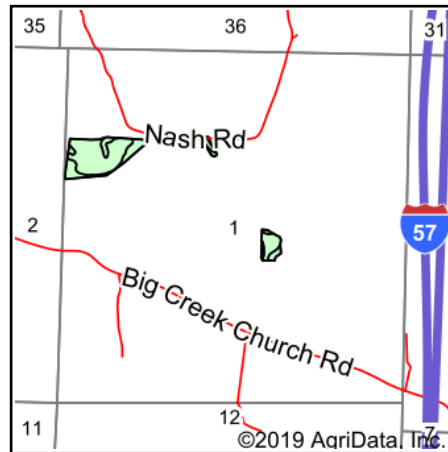
Maps Provided By:
 **surety**
CUSTOMIZED ONLINE MAPPING
© AgriData, Inc. 2019 www.AgriDataInc.com

Field borders provided by Farm Service Agency as of 5/21/2008.

Soils Map



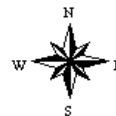
Soils data provided by USDA and NRCS.



State: **Illinois**
 County: **Union**
 Location: **1-13S-1W**
 Township: **Balcom**
 Acres: **16.71**
 Date: **3/23/2020**



Maps Provided By:



| Area Symbol: IL181, Soil Area Version: 13 | | | | | | | | |
|---|--|-------|------------------|-------------------------------------|--------------|---------------|-------------|--|
| Code | Soil Description | Acres | Percent of field | Il. State Productivity Index Legend | Corn Bu/A | Soybeans Bu/A | Wheat Bu/A | Crop productivity index for optimum management |
| **79C3 | Menfro silt loam, 5 to 10 percent slopes, severely eroded | 9.52 | 57.0% | | **142 | **44 | **54 | **103 |
| 8331A | Haymond silt loam, 0 to 3 percent slopes, occasionally flooded | 3.04 | 18.2% | | 181 | 56 | 70 | 132 |
| 5079C3 | Menfro silt loam, karst, 5 to 10 percent slopes, severely eroded | 1.93 | 11.5% | | 165 | 51 | 63 | 120 |
| **79D3 | Menfro silt loam, 10 to 18 percent slopes, severely eroded | 1.24 | 7.4% | | **134 | **41 | **51 | **97 |
| **79F | Menfro silt loam, 25 to 35 percent slopes | 0.76 | 4.5% | | **117 | **36 | **45 | **85 |
| **79E3 | Menfro silt loam, 18 to 25 percent slopes, severely eroded | 0.22 | 1.3% | | **112 | **35 | **43 | **82 |
| Weighted Average | | | | | 149.6 | 46.3 | 57.2 | 108.7 |

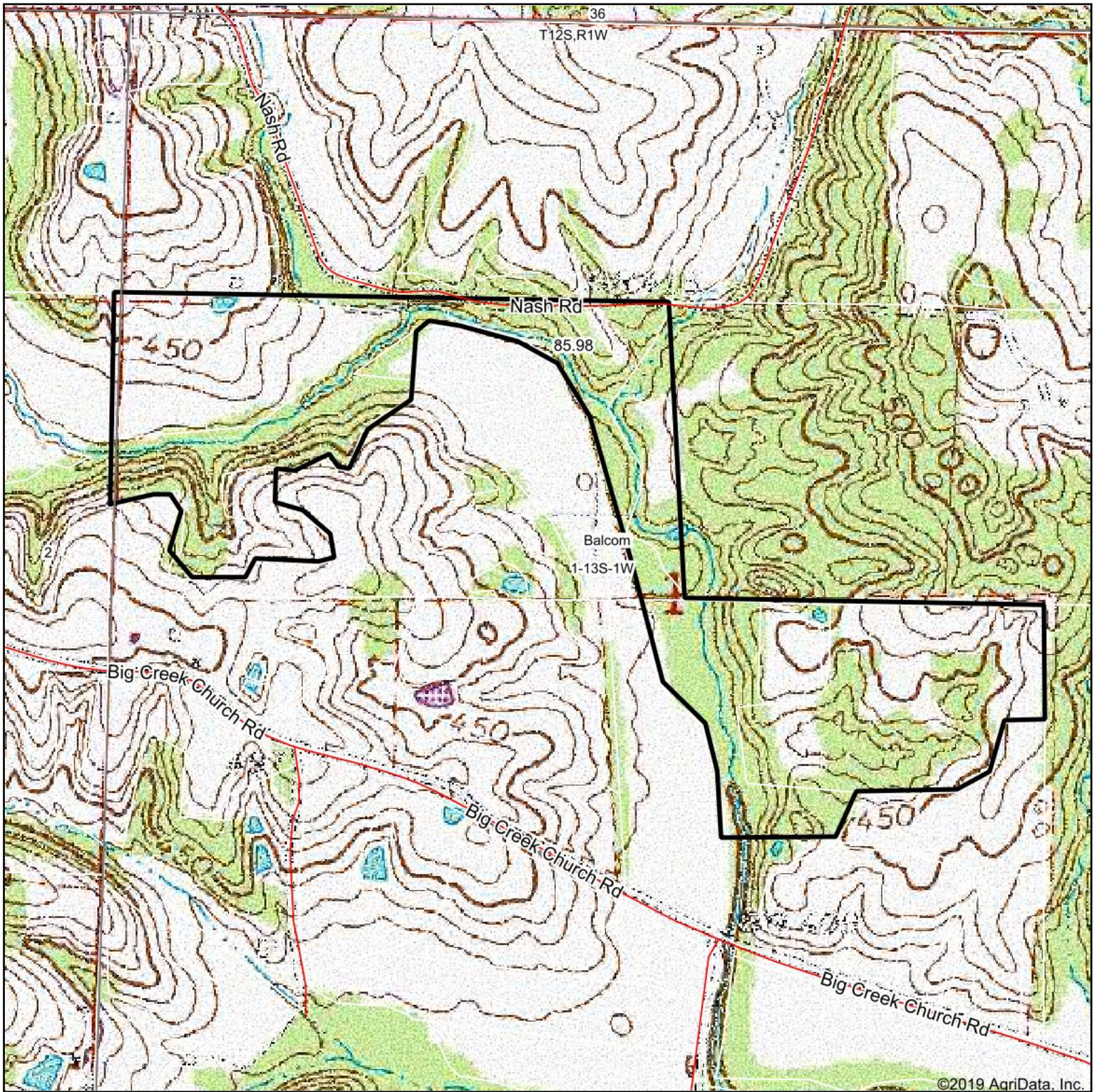
Table: Optimum Crop Productivity Ratings for Illinois Soil by K.R. Olson and J.M. Lang, Office of Research, ACES, University of Illinois at Champaign-Urbana. Version: 1/2/2012 Amended Table S2 B811

Crop yields and productivity indices for optimum management (B811) are maintained at the following NRES web site: <http://soilproductivity.nres.illinois.edu/>

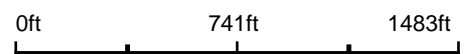
** Indexes adjusted for slope and erosion according to Bulletin 811 Table S3

Soils data provided by USDA and NRCS. Soils data provided by University of Illinois at Champaign-Urbana.

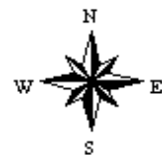
Topography Map



map center: 37° 24' 58.63, -89° 10' 3.18



1-13S-1W
Union County
Illinois



3/23/2020



Maps Provided By:



© AgriData, Inc. 2019 www.AgridataInc.com