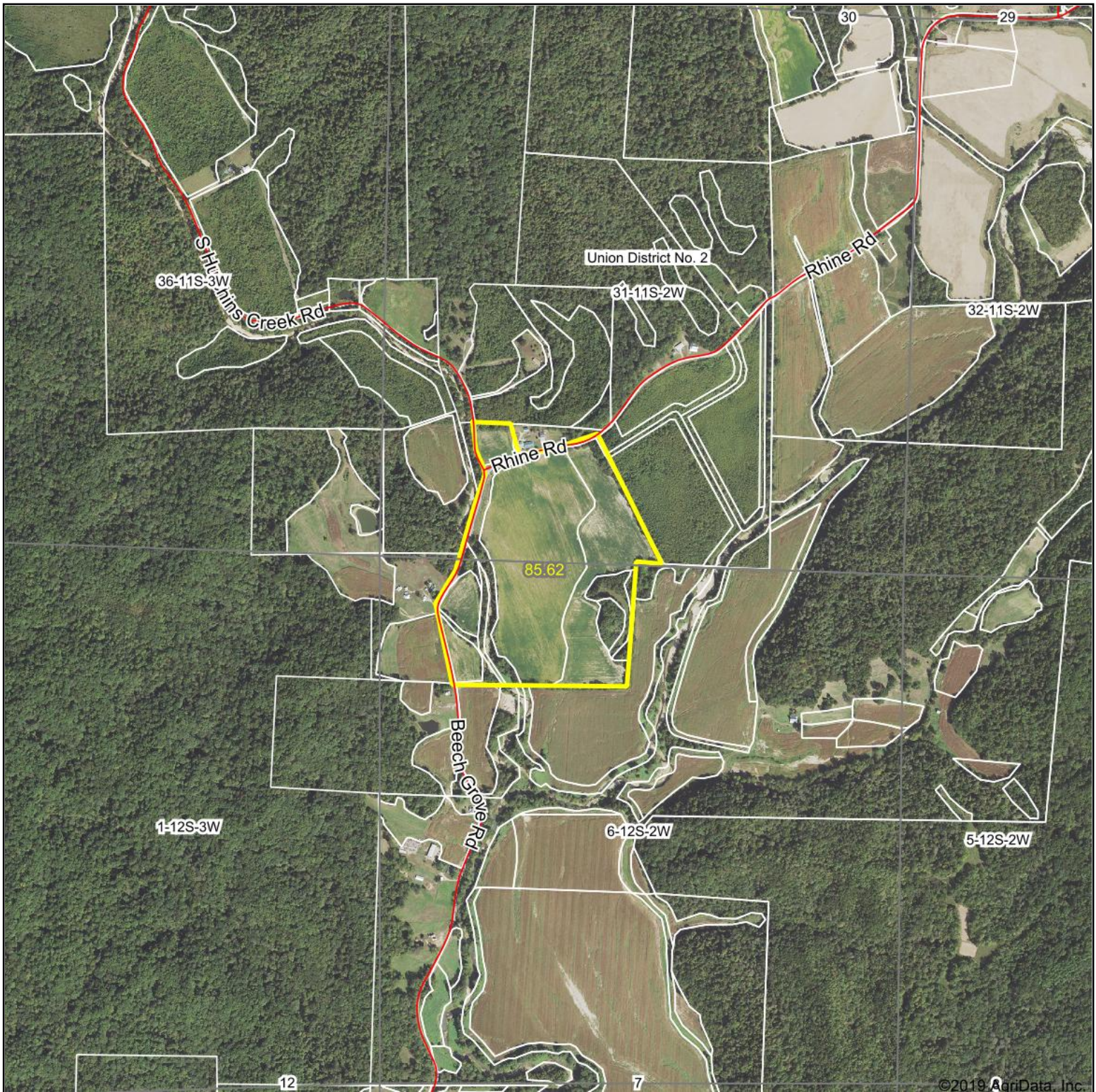


Aerial Map

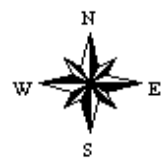


©2019 AgriData, Inc.

Map Center: 37° 30' 38.34, -89° 22' 28.65

0ft 1457ft 2913ft

31-11S-2W
Union County
Illinois



2/27/2020



Maps Provided By:

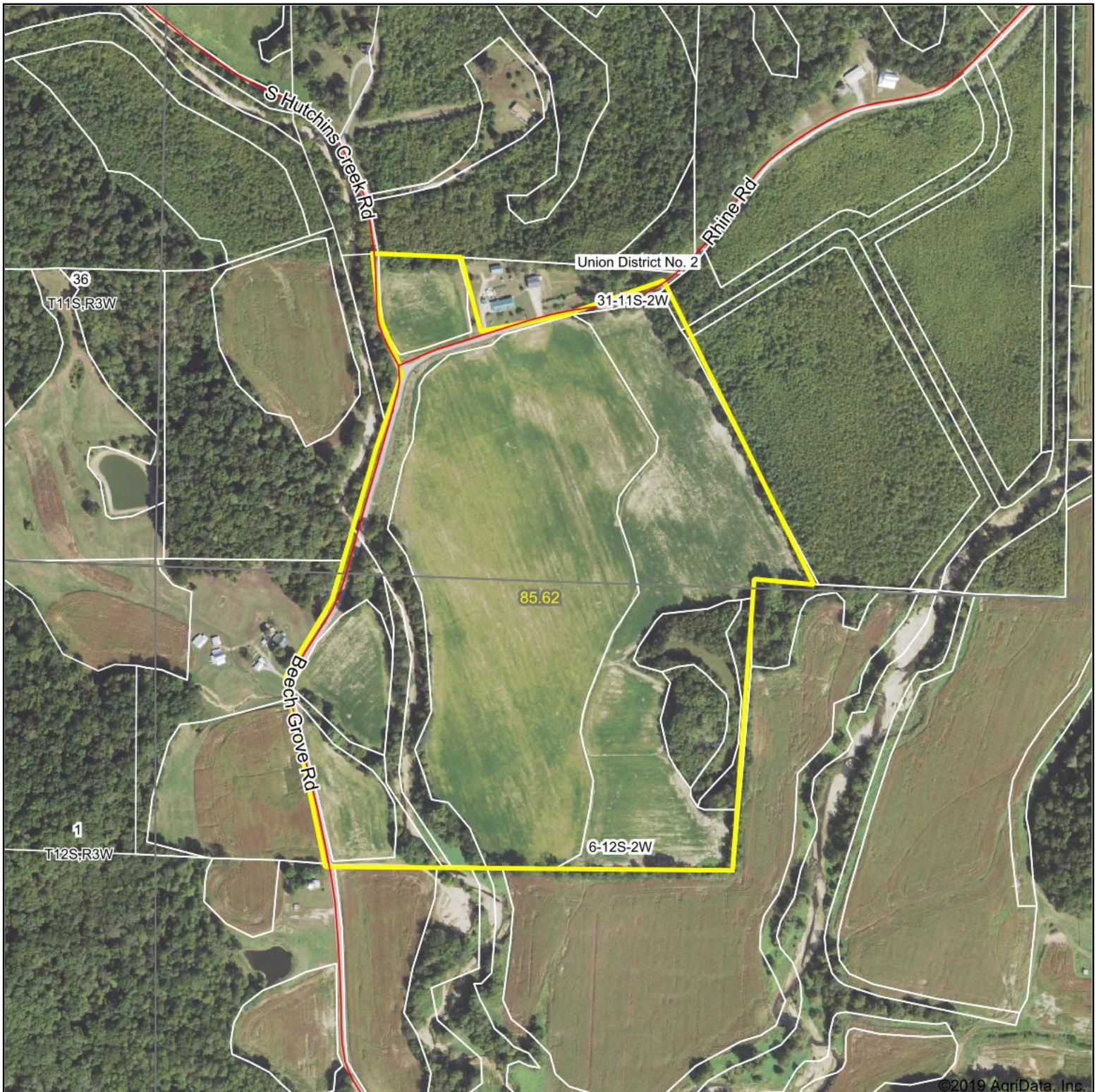


© AgriData, Inc. 2019

www.AgriDataInc.com

Field borders provided by Farm Service Agency as of 5/21/2008.

Aerial Map



©2019 AgriData, Inc.

Map Center: 37° 30' 38.34, -89° 22' 28.66

0ft 627ft 1253ft

31-11S-2W
Union County
Illinois



2/27/2020



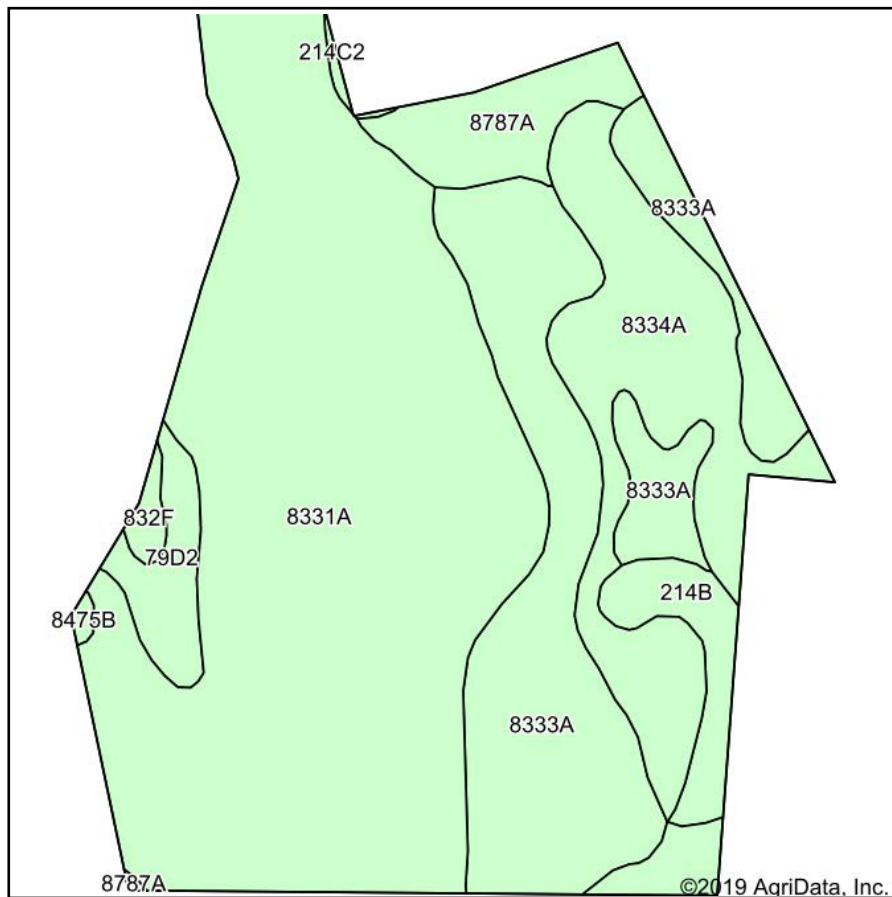
Maps Provided By:



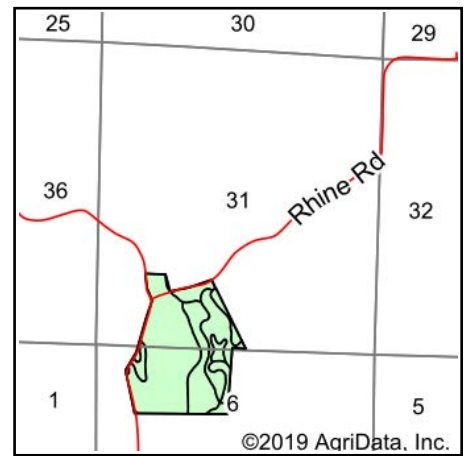
© AgriData, Inc. 2019 www.AgriDataInc.com

Field borders provided by Farm Service Agency as of 5/21/2008.

Soils Map



Soils data provided by USDA and NRCS.



State: **Illinois**
 County: **Union**
 Location: **31-11S-2W**
 Township: **Union District No. 2**
 Acres: **85.62**
 Date: **2/27/2020**



Maps Provided By:



Area Symbol: IL181. Soil Area Version: 13									
Code	Soil Description	Acres	Percent of field	Il. State Productivity Index Legend	Corn Bu/A	Soybeans Bu/A	Wheat Bu/A	Grass-legume hay, T/A	Crop productivity index for optimum management
8331A	Haymond silt loam, 0 to 3 percent slopes, occasionally flooded	46.08	53.8%		181	56	70	0.00	132
8333A	Wakeland silt loam, 0 to 2 percent slopes, occasionally flooded	18.57	21.7%		174	56	68	5.14	128
8334A	Birds silt loam, 0 to 2 percent slopes, occasionally flooded	11.81	13.8%		157	51	61	0.00	117
8787A	Banlic silt loam, 0 to 2 percent slopes, occasionally flooded	3.51	4.1%		142	47	56	4.64	106
**214B	Hosmer silt loam, 2 to 5 percent slopes	2.56	3.0%		**139	**46	**57	0.00	**104
**79D2	Menfro silt loam, 10 to 18 percent slopes, eroded	2.28	2.7%		**147	**45	**56	0.00	**107
**832F	Menfro-Clarksville complex, 18 to 35 percent slopes	0.49	0.6%		**93	**30	**36	0.00	**69
**214C2	Hosmer silt loam, 5 to 10 percent slopes, eroded	0.17	0.2%		**126	**41	**52	0.00	**95
8475B	Elsah silt loam, 1 to 4 percent slopes, occasionally flooded	0.15	0.2%		147	49	56	0.00	110
Weighted Average					171.7	54.2	66.7	1.31	126

Table: Optimum Crop Productivity Ratings for Illinois Soil by K.R. Olson and J.M. Lang, Office of Research, ACES, University of Illinois at Champaign-Urbana. Version: 1/2/2012 Amended Table S2 B811

Crop yields and productivity indices for optimum management (B811) are maintained at the following NRES web site: <http://soilproductivity.nres.illinois.edu/>

** Indexes adjusted for slope and erosion according to Bulletin 811 Table S3

e Soils in the well drained group were not rated for grass-legume and are shown with a zero "0".

*c: Using Capabilities Class Dominant Condition Aggregation Method

Soils data provided by USDA and NRCS. Soils data provided by University of Illinois at Champaign-Urbana.

Topography Map

