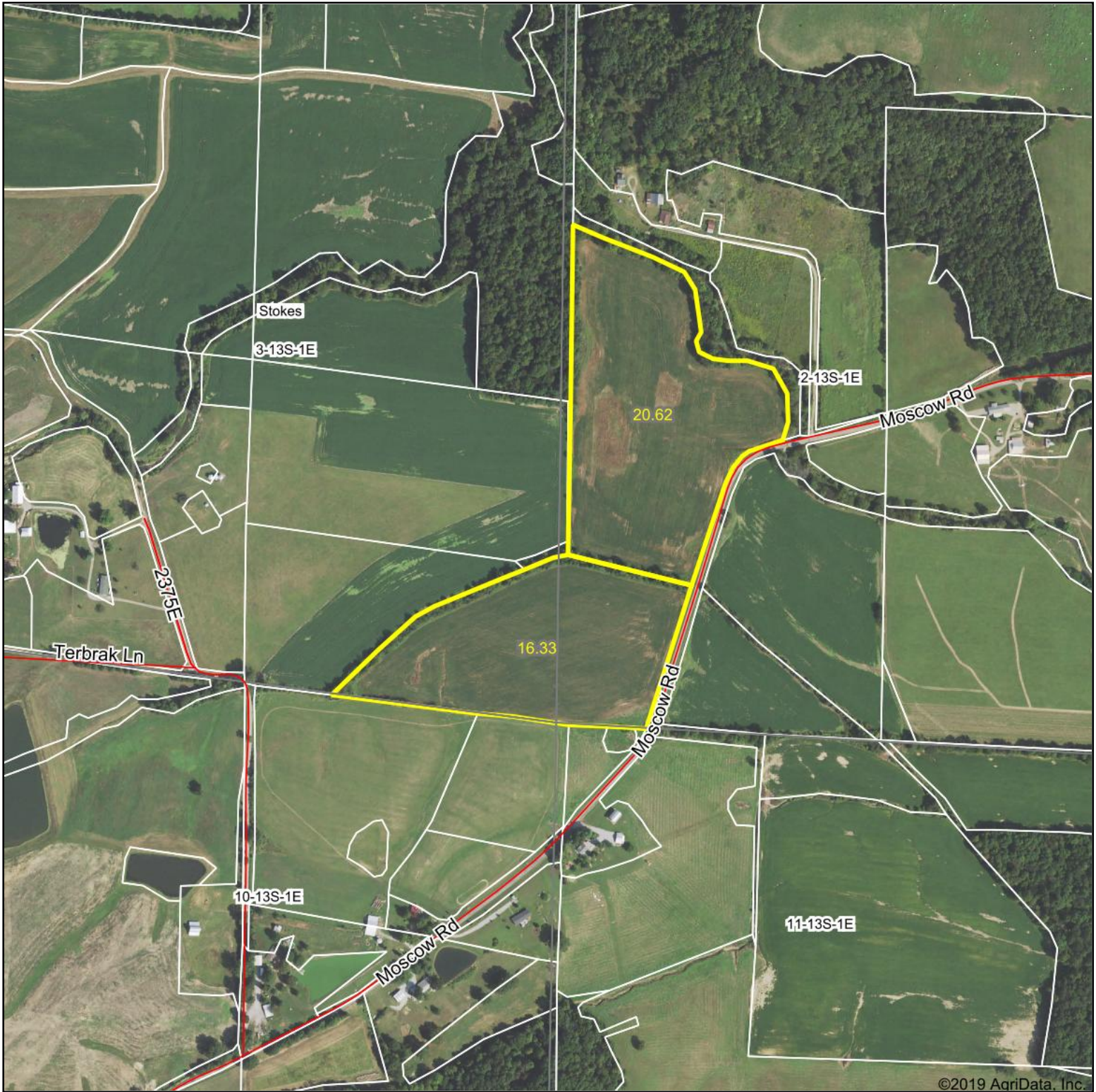
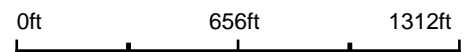


# Aerial Map



©2019 AgriData, Inc.

Map Center: 37° 24' 25.93, -89° 4' 53



**3-13S-1E**  
**Union County**  
**Illinois**

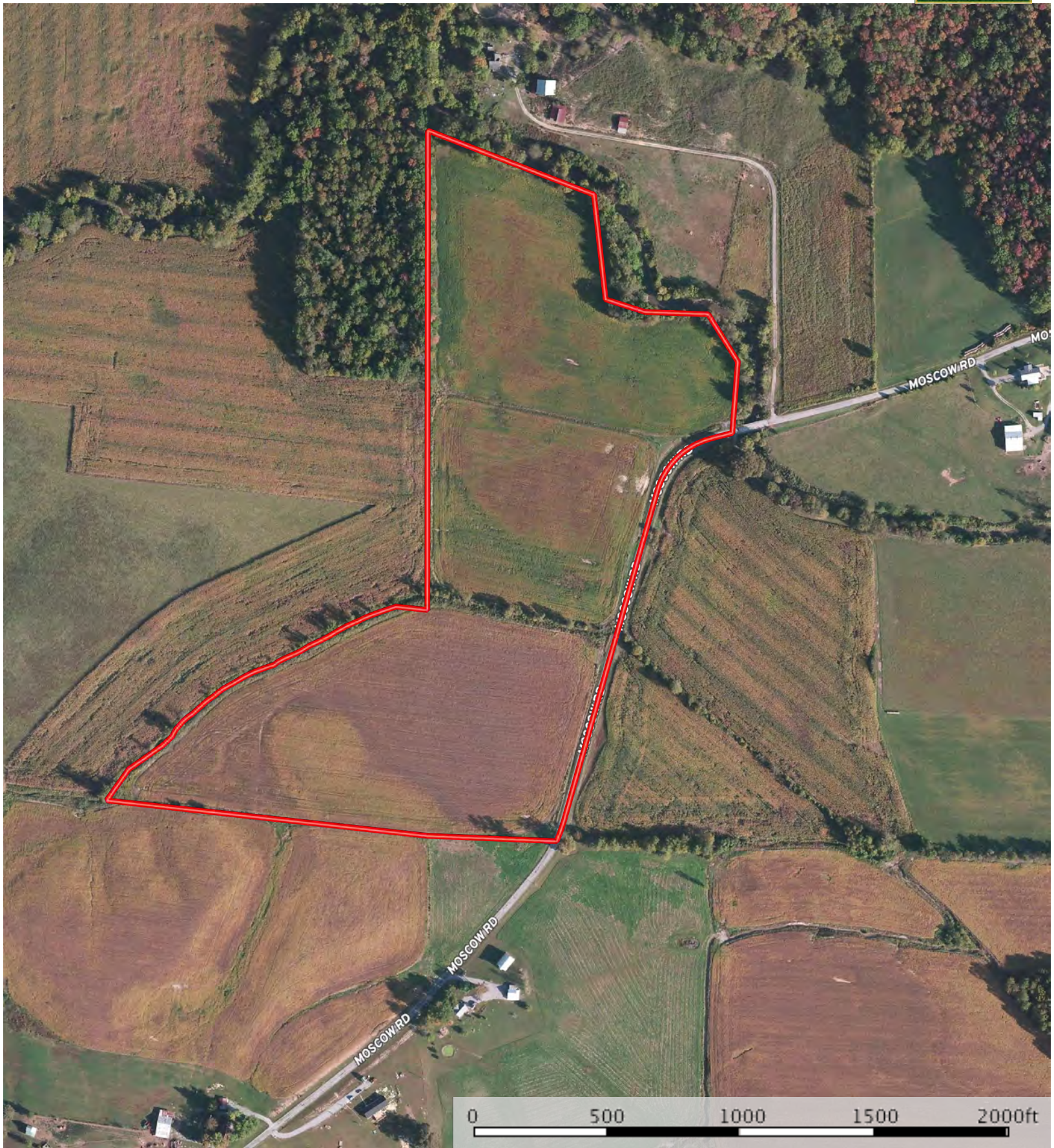


Maps Provided By:  
  
CUSTOMIZED ONLINE MAPPING  
© AgriData, Inc. 2019      www.AgriDataInc.com

3/23/2020

Field borders provided by Farm Service Agency as of 5/21/2008.

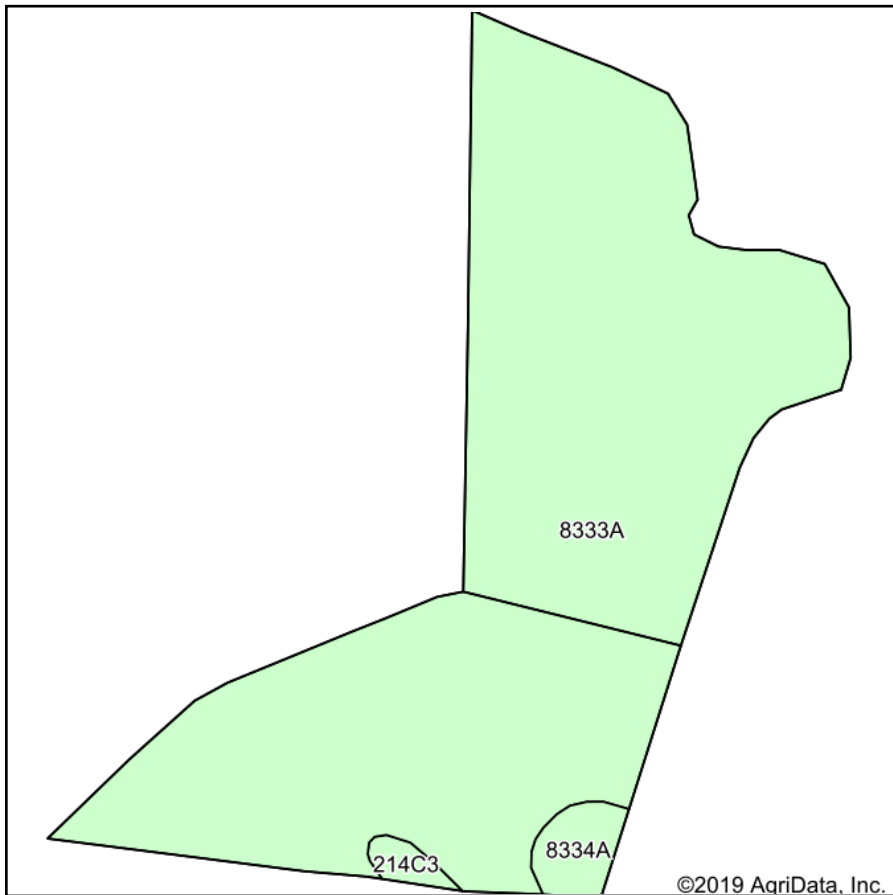




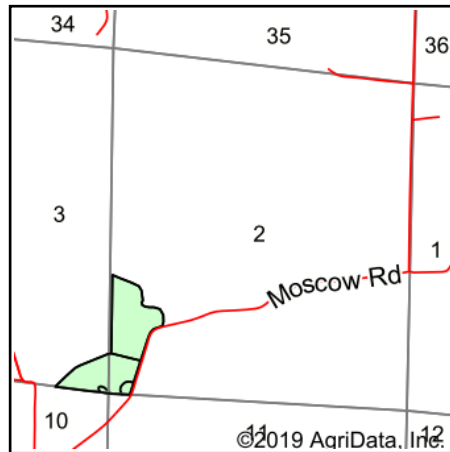
 Boundary



# Soils Map



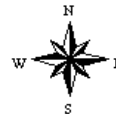
Soils data provided by USDA and NRCS.



State: **Illinois**  
 County: **Union**  
 Location: **3-13S-1E**  
 Township: **Stokes**  
 Acres: **36.95**  
 Date: **3/23/2020**



Maps Provided By:



Area Symbol: IL181, Soil Area Version: 13								
Code	Soil Description	Acres	Percent of field	Il. State Productivity Index Legend	Corn Bu/A	Soybeans Bu/A	Wheat Bu/A	Crop productivity index for optimum management
8333A	Wakeland silt loam, 0 to 2 percent slopes, occasionally flooded	35.68	96.6%		174	56	68	128
8334A	Birds silt loam, 0 to 2 percent slopes, occasionally flooded	0.91	2.5%		157	51	61	117
**214C3	Hosmer silt loam, 5 to 10 percent slopes, severely eroded	0.36	1.0%		**104	**34	**43	**78
<b>Weighted Average</b>					<b>172.9</b>	<b>55.7</b>	<b>67.6</b>	<b>127.2</b>

**Table: Optimum Crop Productivity Ratings for Illinois Soil by K.R. Olson and J.M. Lang, Office of Research, ACES, University of Illinois at Champaign-Urbana.** Version: 1/2/2012 Amended Table S2 B811

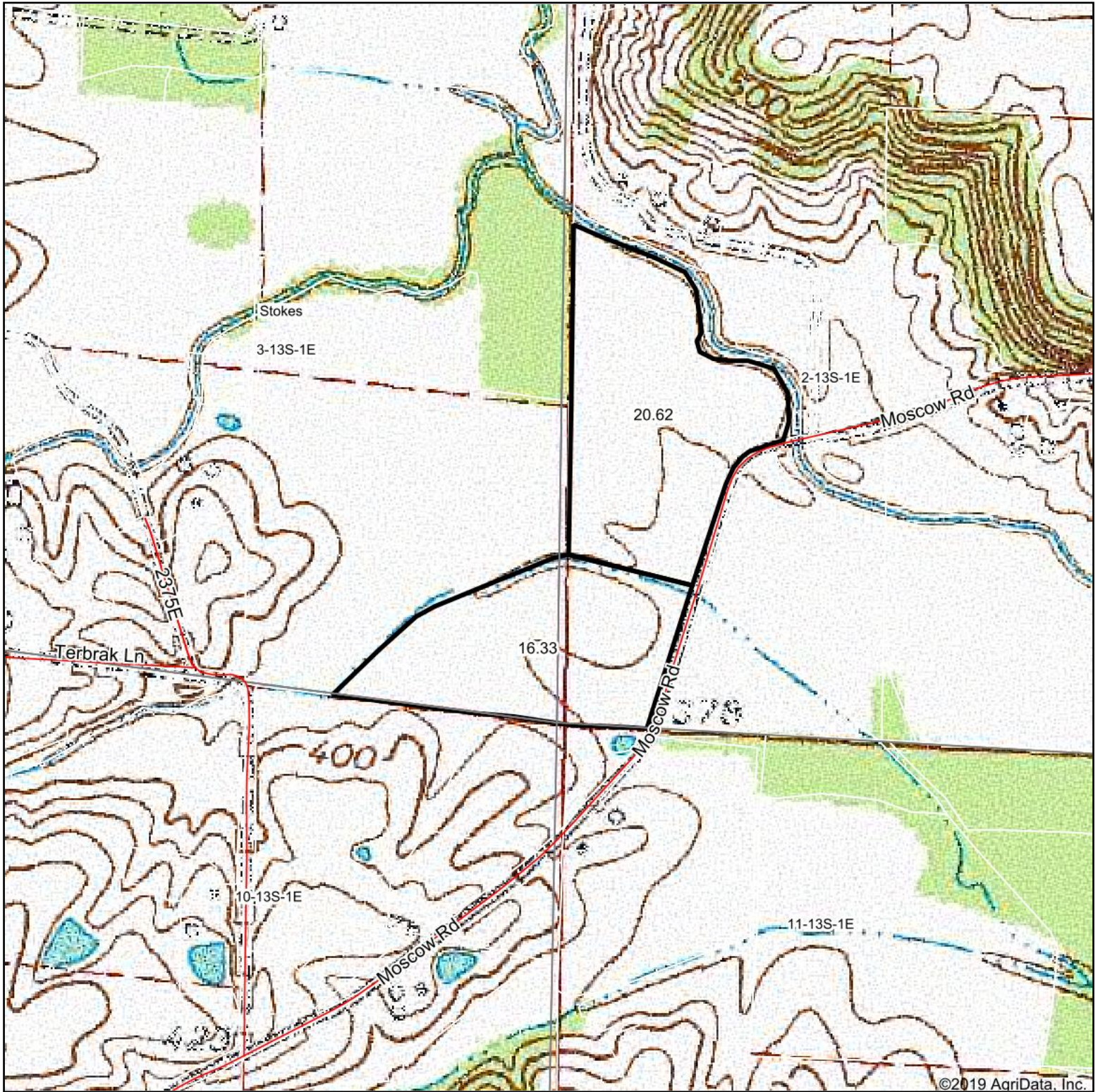
Crop yields and productivity indices for optimum management (B811) are maintained at the following NRES web site: <http://soilproductivity.nres.illinois.edu/>

\*\* Indexes adjusted for slope and erosion according to Bulletin 811 Table S3

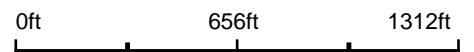
Soils data provided by USDA and NRCS. Soils data provided by University of Illinois at Champaign-Urbana.



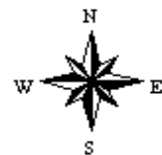
# Topography Map



map center: 37° 24' 25.93, -89° 4' 53



**3-13S-1E**  
**Union County**  
**Illinois**



3/23/2020



Maps Provided By:



© AgriData, Inc. 2019 www.AgridataInc.com