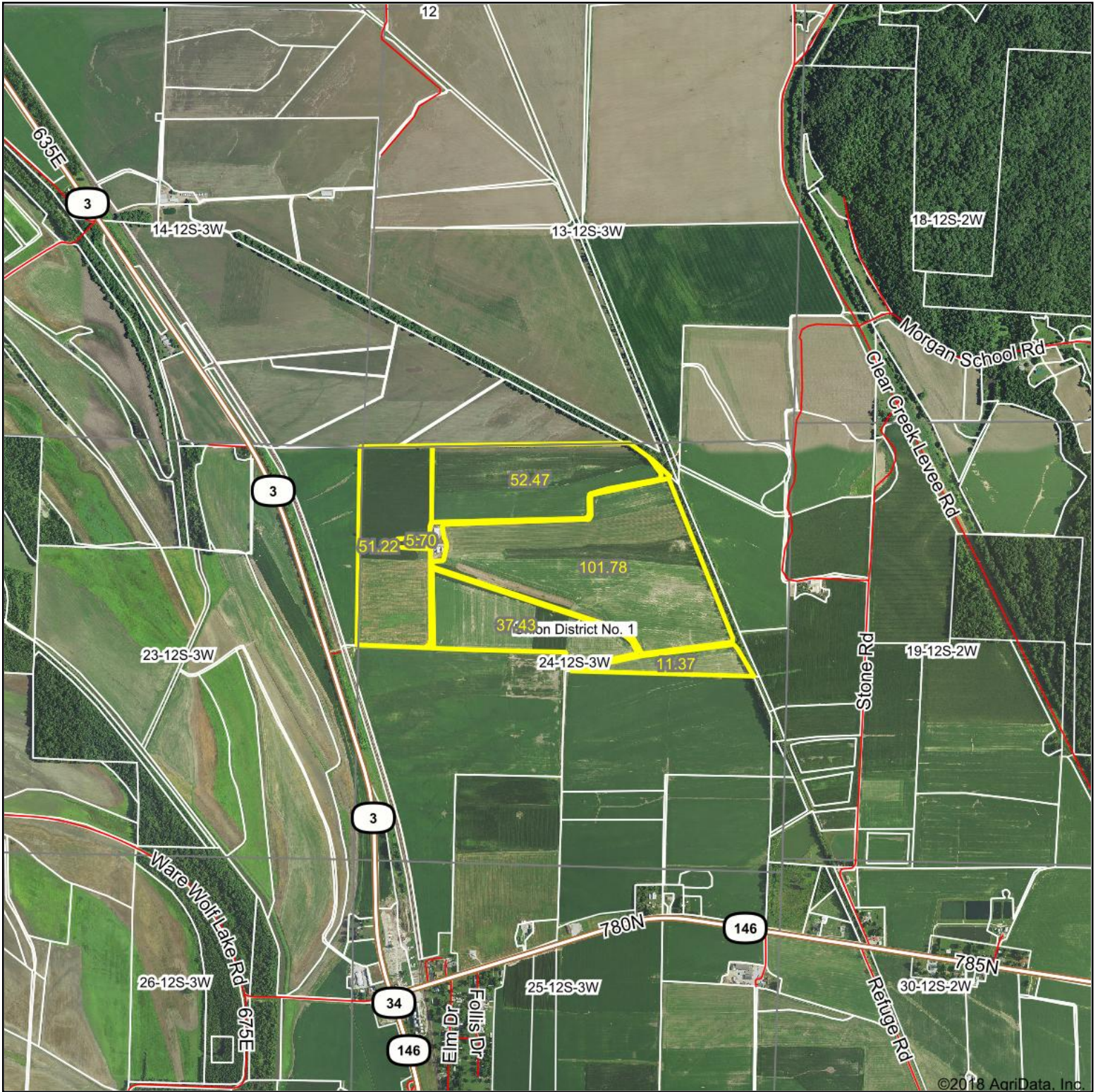
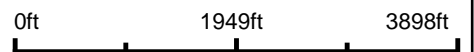


Aerial Map



map center: 37° 27' 47.16, -89° 23' 25.59



Maps Provided By:

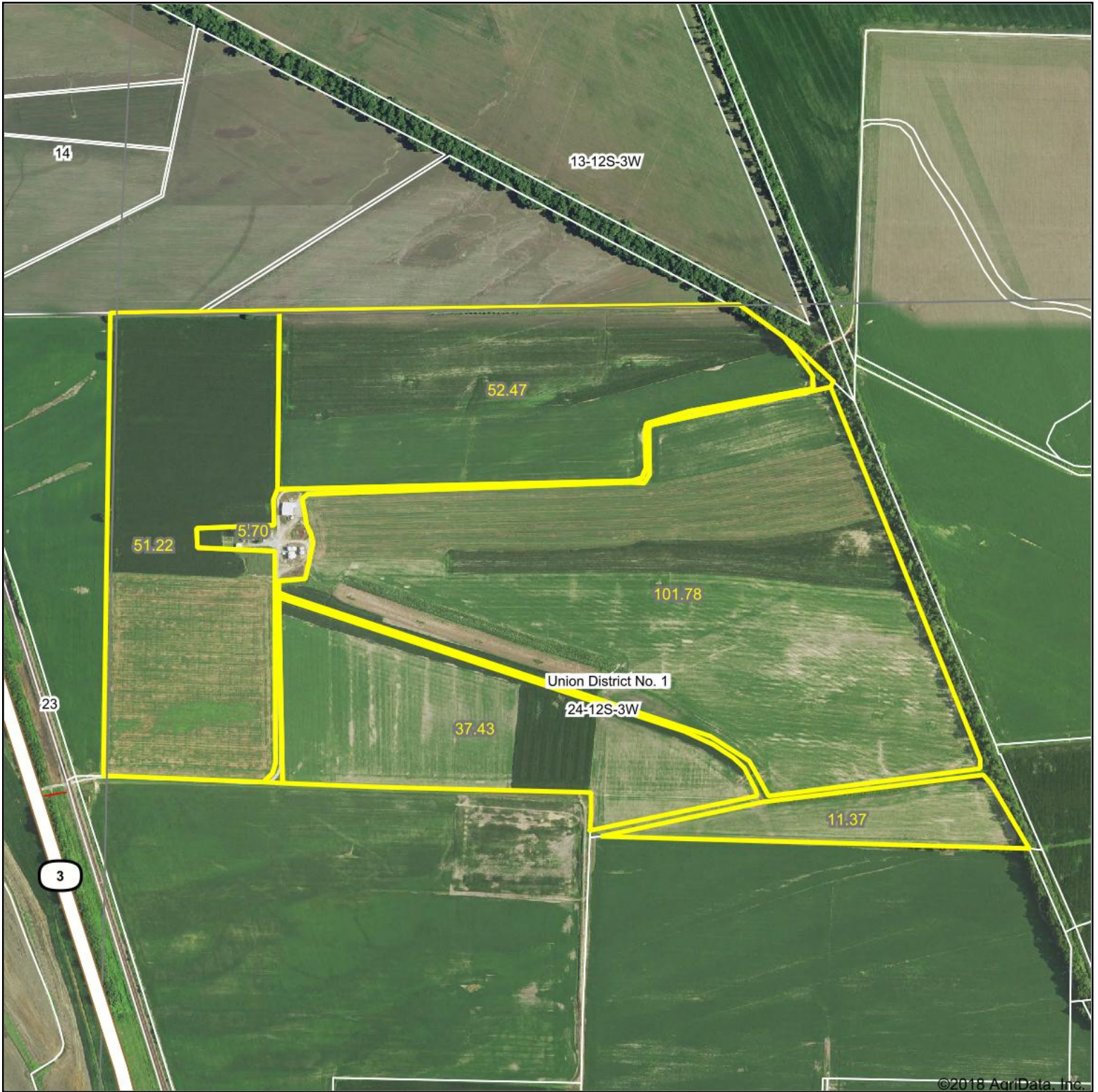
 CUSTOMIZED ONLINE MAPPING
 © Agridata, Inc. 2018 www.AgridataInc.com

24-12S-3W
Union County
Illinois



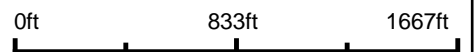
3/18/2018

Aerial Map



©2018 AgriData, Inc.

map center: 37° 27' 47.17, -89° 23' 25.61

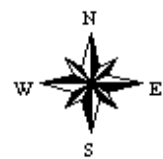


Maps Provided By:



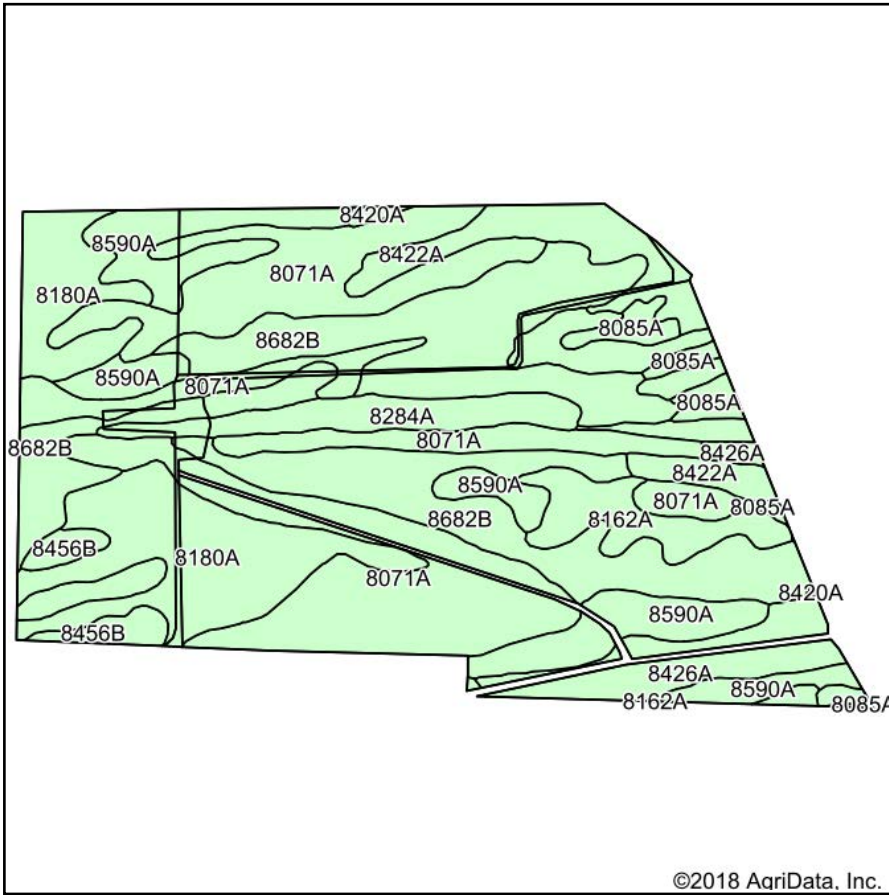
© AgriData, Inc. 2018 www.AgriDataInc.com

24-12S-3W
Union County
Illinois

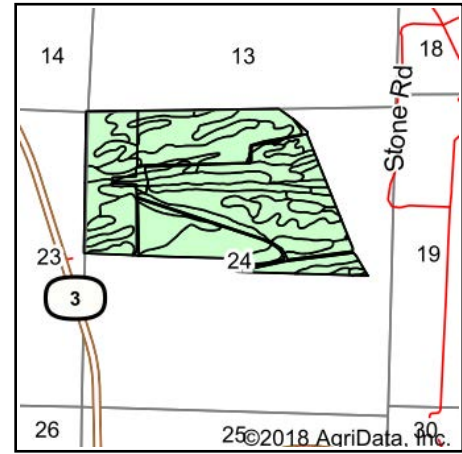


3/18/2018

Soils Map



Soils data provided by USDA and NRCS.



State: **Illinois**
 County: **Union**
 Location: **24-12S-3W**
 Township: **Union District No. 1**
 Acres: **259.97**
 Date: **3/18/2018**



Maps Provided By:



Area Symbol: IL181, Soil Area Version: 11

Code	Soil Description	Acres	Percent of field	Il. State Productivity Index Legend	Corn Bu/A	Soybeans Bu/A	Wheat Bu/A	Grass-legume e hay, T/A	Crop productivity index for optimum management
8071A	Darwin silty clay, 0 to 2 percent slopes, occasionally flooded	69.08	26.6%		149	50	60	4.39	111
8682B	Medway silty clay loam, 1 to 6 percent slopes, occasionally flooded	63.16	24.3%		176	57	69	0.00	131
8590A	Cairo silty clay, 0 to 2 percent slopes, occasionally flooded	34.92	13.4%		159	53	61	4.77	119
8180A	Dupo silt loam, 0 to 2 percent slopes, occasionally flooded	34.63	13.3%		182	56	68	5.14	131
8422A	Cape silty clay loam, 0 to 2 percent slopes, occasionally flooded	14.02	5.4%		136	46	58	4.26	103
8426A	Karnak clay, 0 to 2 percent slopes, occasionally flooded	12.49	4.8%		134	45	53	4.01	101
8284A	Tice silty clay loam, 0 to 2 percent slopes, occasionally flooded	9.86	3.8%		184	57	70	5.64	134
8162A	Gorham silty clay loam, 0 to 3 percent slopes, occasionally flooded	8.81	3.4%		175	57	68	5.14	130
8456B	Ware loam, 1 to 6 percent slopes, occasionally flooded	7.02	2.7%		159	51	63	0.00	118
8085A	Jacob silty clay, 0 to 2 percent slopes, occasionally flooded	5.36	2.1%		105	39	43	3.39	82
8420A	Piopolis silty clay loam, 0 to 2 percent slopes, occasionally flooded	0.62	0.2%		142	48	59	4.39	108
Weighted Average					161.4	52.7	63.3	3.38	119.8

Table: Optimum Crop Productivity Ratings for Illinois Soil by K.R. Olson and J.M. Lang, Office of Research, ACES, University of Illinois at Champaign-Urbana. Version: 1/2/2012 Amended Table S2 B811

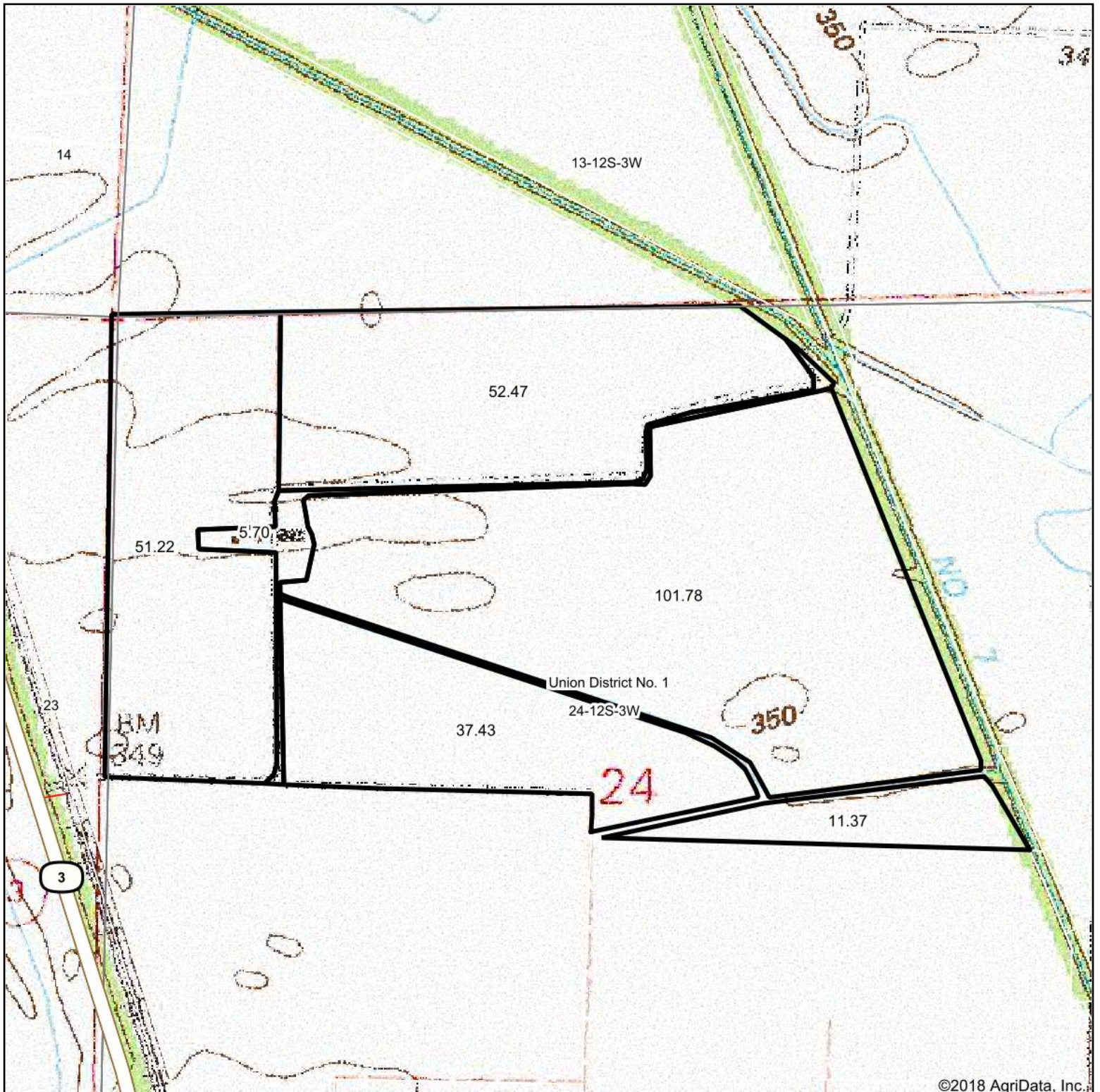
Crop yields and productivity indices for optimum management (B811) are maintained at the following NRES web site: <http://soilproductivity.nres.illinois.edu/>

** Indexes adjusted for slope and erosion according to Bulletin 811 Table S3

e Soils in the well drained group were not rated for grass-legume and are shown with a zero "0".

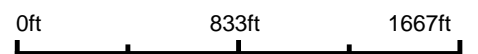
*c: Using Capabilities Class Dominant Condition Aggregation Method

Topography Map



©2018 AgriData, Inc.

map center: 37° 27' 47.17, -89° 23' 25.61



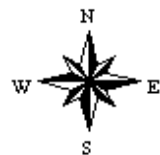
Maps Provided By:



© AgriData, Inc. 2018

www.AgriDataInc.com

24-12S-3W
Union County
Illinois



3/18/2018