

Aerial Map



©2019 AgriData, Inc.

Map Center: 38° 27' 59, -88° 32' 12.28



4-1S-6E
Wayne County
Illinois

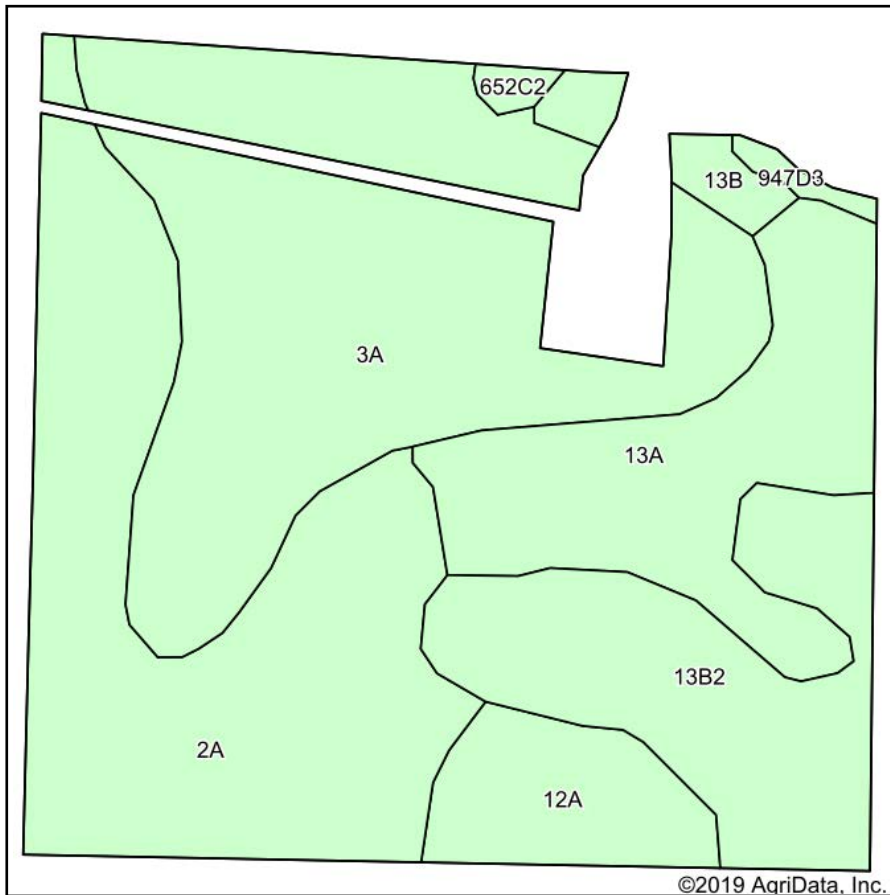


3/3/2020

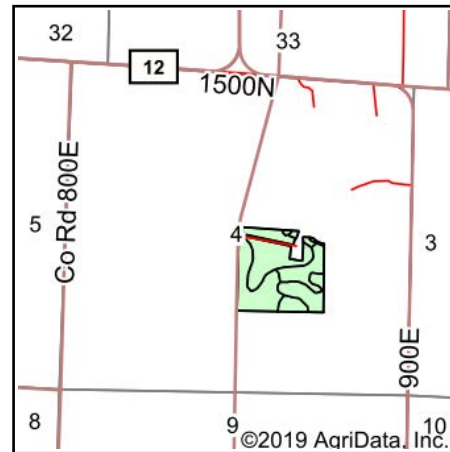
Maps Provided By:
 **surety**[®]
CUSTOMIZED ONLINE MAPPING
© AgriData, Inc. 2019 www.AgriDataInc.com

Field borders provided by Farm Service Agency as of 5/21/2008.

Soils Map



Soils data provided by USDA and NRCS.



State: **Illinois**
 County: **Wayne**
 Location: **4-1S-6E**
 Township: **Berry**
 Acres: **37.64**
 Date: **3/3/2020**



Area Symbol: IL191, Soil Area Version: 17									
Code	Soil Description	Acres	Percent of field	Il. State Productivity Index Legend	Corn Bu/A	Soybeans Bu/A	Wheat Bu/A	Grass-legume hay, T/A	Crop productivity index for optimum management
3A	Hoyleton silt loam, 0 to 2 percent slopes	12.41	33.0%		146	46	58	4.64	108
2A	Cisne silt loam, 0 to 2 percent slopes	10.86	28.9%		149	46	59	4.64	109
**13B2	Bluford silt loam, 2 to 5 percent slopes, eroded	5.53	14.7%		**129	**42	**52	**3.22	**96
13A	Bluford silt loam, 0 to 2 percent slopes	5.50	14.6%		136	44	55	3.39	101
12A	Wynoose silt loam, 0 to 2 percent slopes	2.20	5.8%		128	42	51	4.26	97
**13B	Bluford silt loam, 2 to 5 percent slopes	0.73	1.9%		**135	**44	**54	**3.36	**100
**947D3	Hickory-Passport clay loams, 10 to 18 percent slopes, severely eroded	0.22	0.6%		**109	**36	**45	**2.89	**80
**652C2	Passport silt loam, 5 to 10 percent slopes, eroded	0.19	0.5%		**116	**39	**51	**3.85	**88
Weighted Average					141.3	44.8	56.4	4.19	104.4

Table: Optimum Crop Productivity Ratings for Illinois Soil by K.R. Olson and J.M. Lang, Office of Research, ACES, University of Illinois at Champaign-Urbana. Version: 1/2/2012 Amended Table S2 B811

Crop yields and productivity indices for optimum management (B811) are maintained at the following NRES web site: <http://soilproductivity.nres.illinois.edu/>

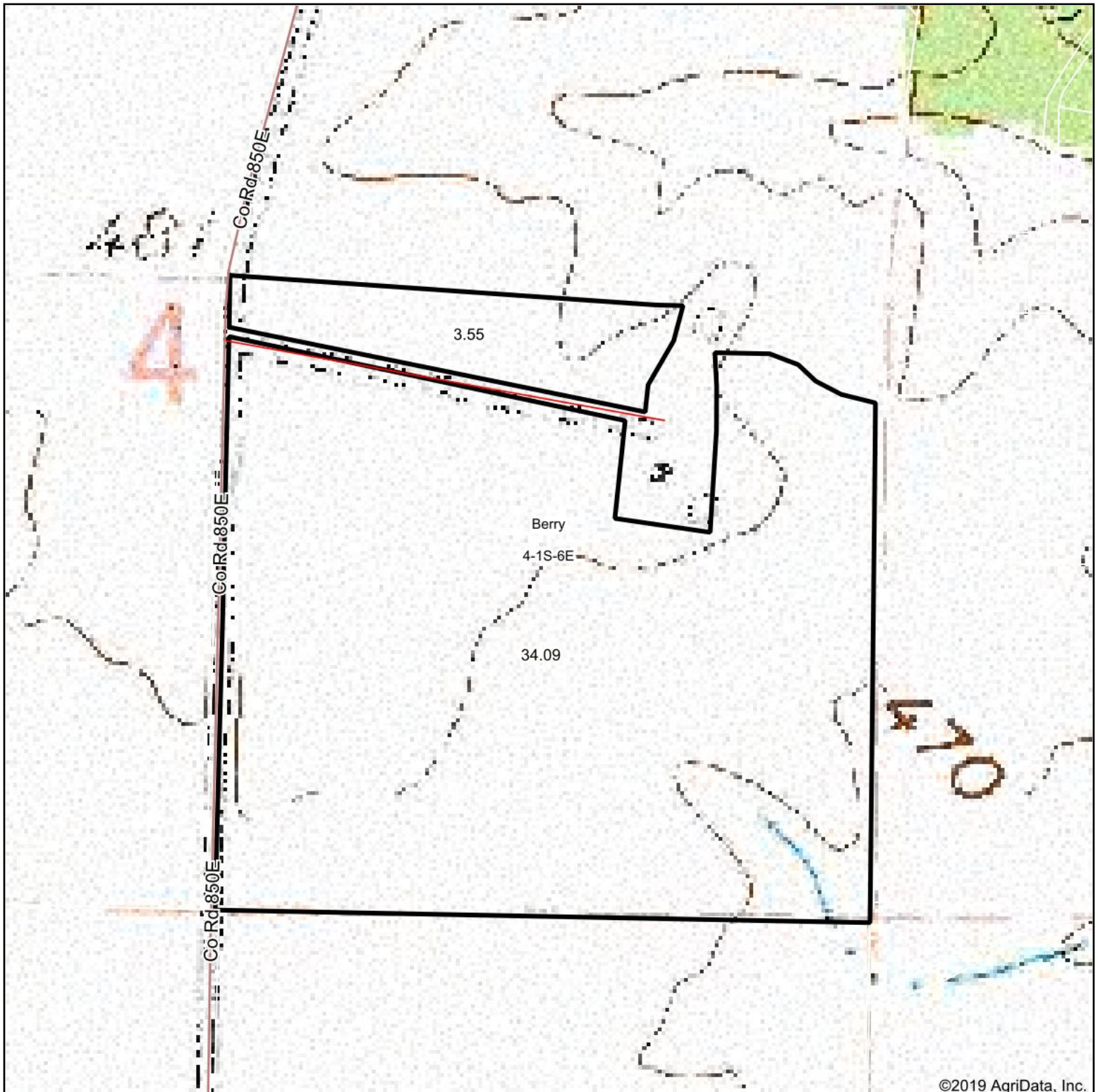
** Indexes adjusted for slope and erosion according to Bulletin 811 Table S3

e Soils in the well drained group were not rated for grass-legume and are shown with a zero "0".

*c: Using Capabilities Class Dominant Condition Aggregation Method

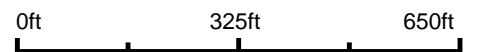
Soils data provided by USDA and NRCS. Soils data provided by University of Illinois at Champaign-Urbana.

Topography Map

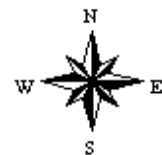


©2019 AgriData, Inc.

map center: 38° 27' 59, -88° 32' 12.28



4-1S-6E
Wayne County
Illinois



3/3/2020



Maps Provided By:



© AgriData, Inc. 2019

www.AgridataInc.com

Field borders provided by Farm Service Agency as of 5/21/2008.