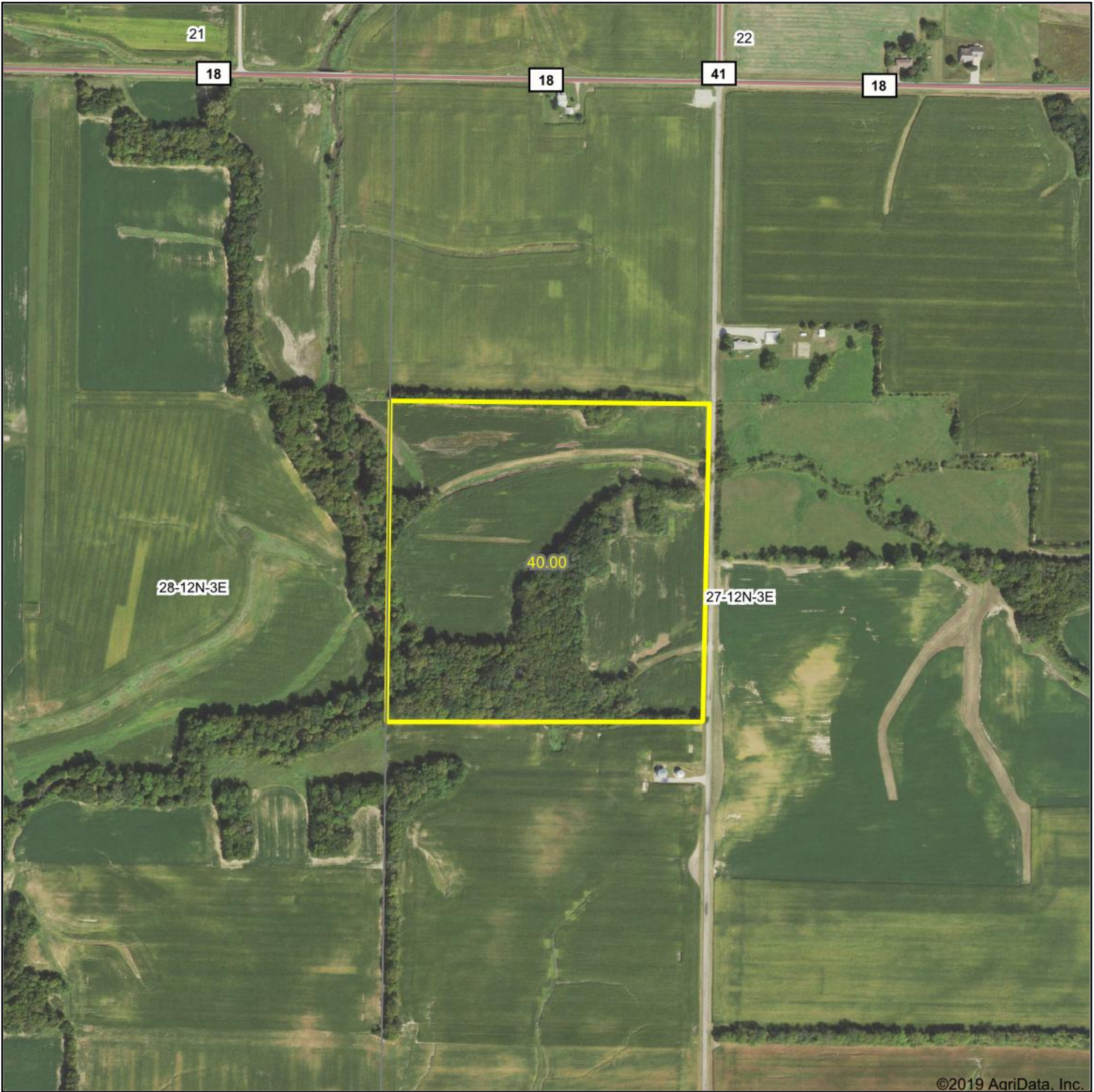


Aerial Map

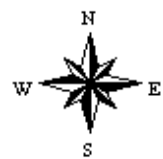


©2019 AgriData, Inc.

Map Center: 39° 27' 30.11, -88° 51' 41.43



27-12N-3E
Shelby County
Illinois



3/3/2020

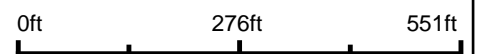
Maps Provided By:
 **surety**[®]
CUSTOMIZED ONLINE MAPPING
© AgriData, Inc. 2019 www.AgriDataInc.com

Aerial Map



©2019 AgriData, Inc.

Map Center: 39° 27' 30.11, -88° 51' 41.43



27-12N-3E
Shelby County
Illinois

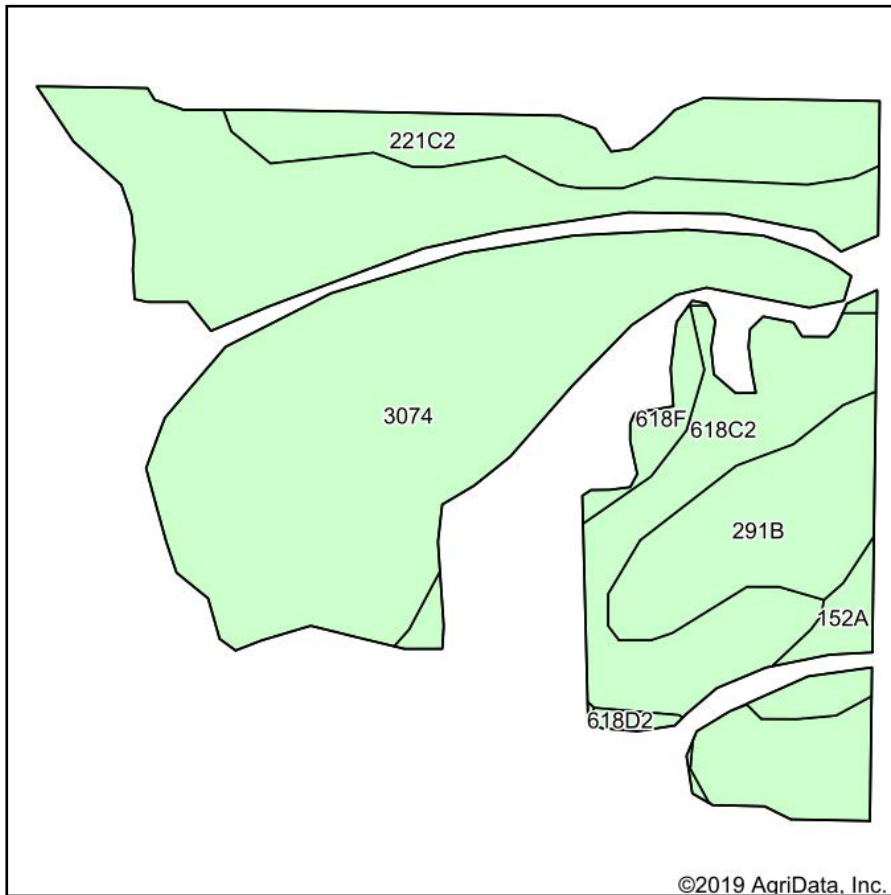


Maps Provided By:

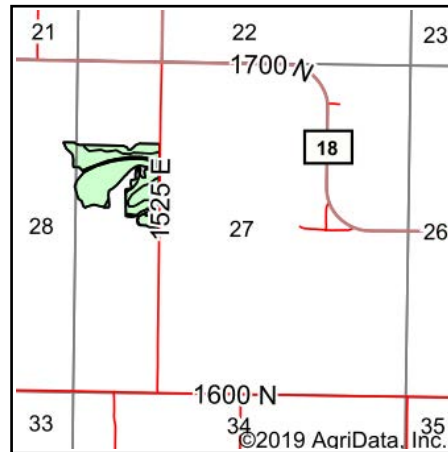
CUSTOMIZED ONLINE MAPPING
© AgriData, Inc. 2019 www.AgriDataInc.com

3/3/2020

Soils Map



Soils data provided by USDA and NRCS.



State: **Illinois**
 County: **Shelby**
 Location: **27-12N-3E**
 Township: **Ridge**
 Acres: **28.23**
 Date: **3/3/2020**

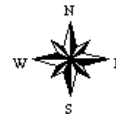


Maps Provided By:



© AgriData, Inc. 2019

www.AgriDataInc.com



Area Symbol: IL173. Soil Area Version: 16							
Code	Soil Description	Acres	Percent of field	Il. State Productivity Index Legend	Corn Bu/A	Soybeans Bu/A	Crop productivity index for optimum management
3074	Radford silt loam, frequently flooded	16.14	57.2%		186	58	136
**618C2	Senachwine silt loam, 5 to 10 percent slopes, eroded	4.89	17.3%		**136	**44	**100
**221C2	Parr silt loam, 5 to 10 percent slopes, eroded	3.00	10.6%		**148	**48	**111
**291B	Xenia silt loam, Bloomington Ridged Plain, 2 to 5 percent slopes	2.71	9.6%		**160	**50	**117
152A	Drummer silty clay loam, 0 to 2 percent slopes	0.72	2.6%		195	63	144
**618F	Senachwine silt loam, 18 to 35 percent slopes	0.63	2.2%		**104	**33	**76
**618D2	Senachwine silt loam, 10 to 18 percent slopes, eroded	0.14	0.5%		**130	**42	**95
Weighted Average					168.9	53.2	123.9

Table: Optimum Crop Productivity Ratings for Illinois Soil by K.R. Olson and J.M. Lang, Office of Research, ACES, University of Illinois at Champaign-Urbana. Version: 1/2/2012 Amended Table S2 B811

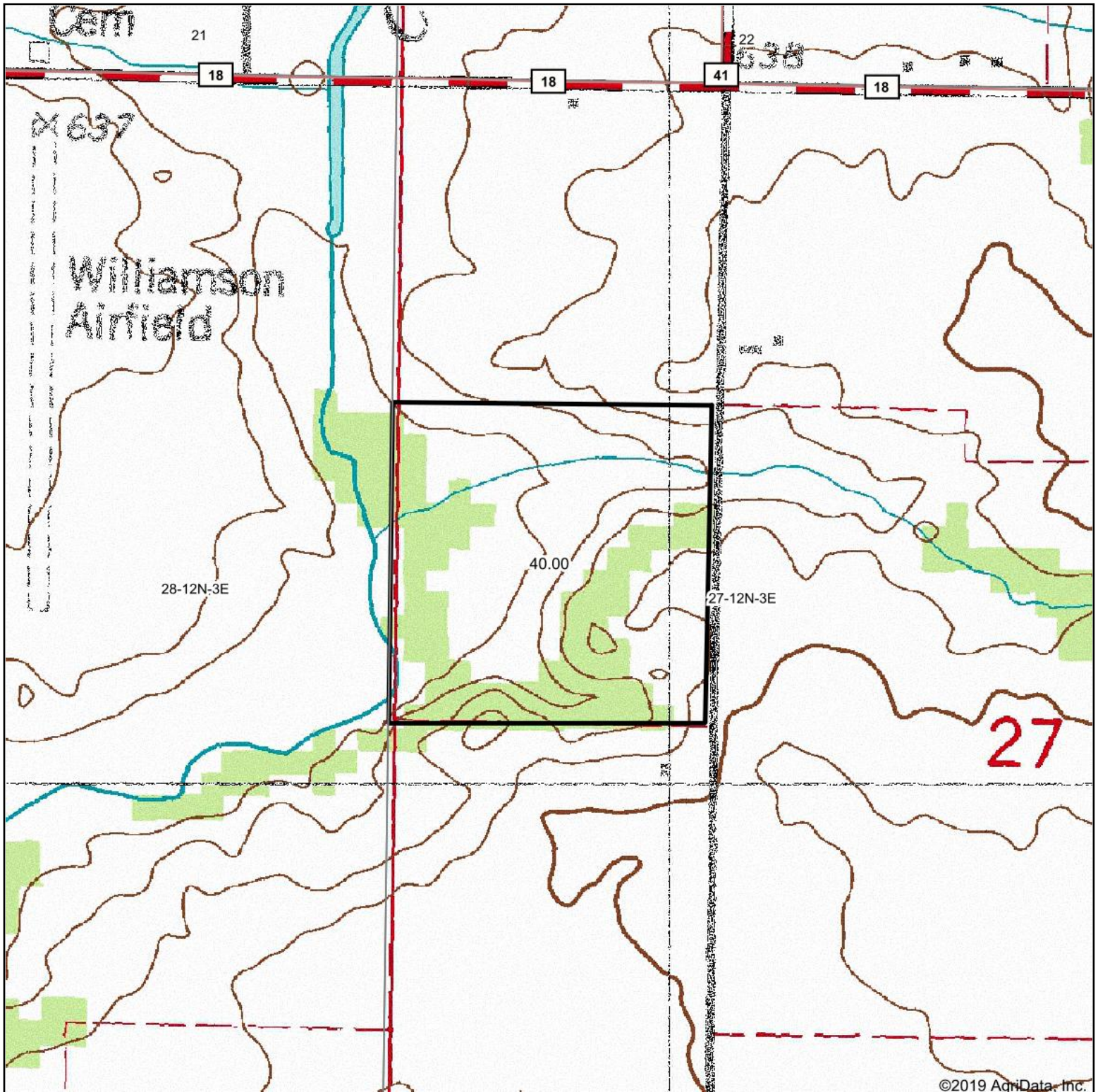
Crop yields and productivity indices for optimum management (B811) are maintained at the following NRES web site: <http://soilproductivity.nres.illinois.edu/>

** Indexes adjusted for slope and erosion according to Bulletin 811 Table S3

*c: Using Capabilities Class Dominant Condition Aggregation Method

Soils data provided by USDA and NRCS. Soils data provided by University of Illinois at Champaign-Urbana.

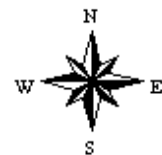
Topography Map



map center: 39° 27' 30.11, -88° 51' 41.43



27-12N-3E
Shelby County
Illinois



3/3/2020



Maps Provided By:



© AgriData, Inc. 2019

www.AgrIDataInc.com