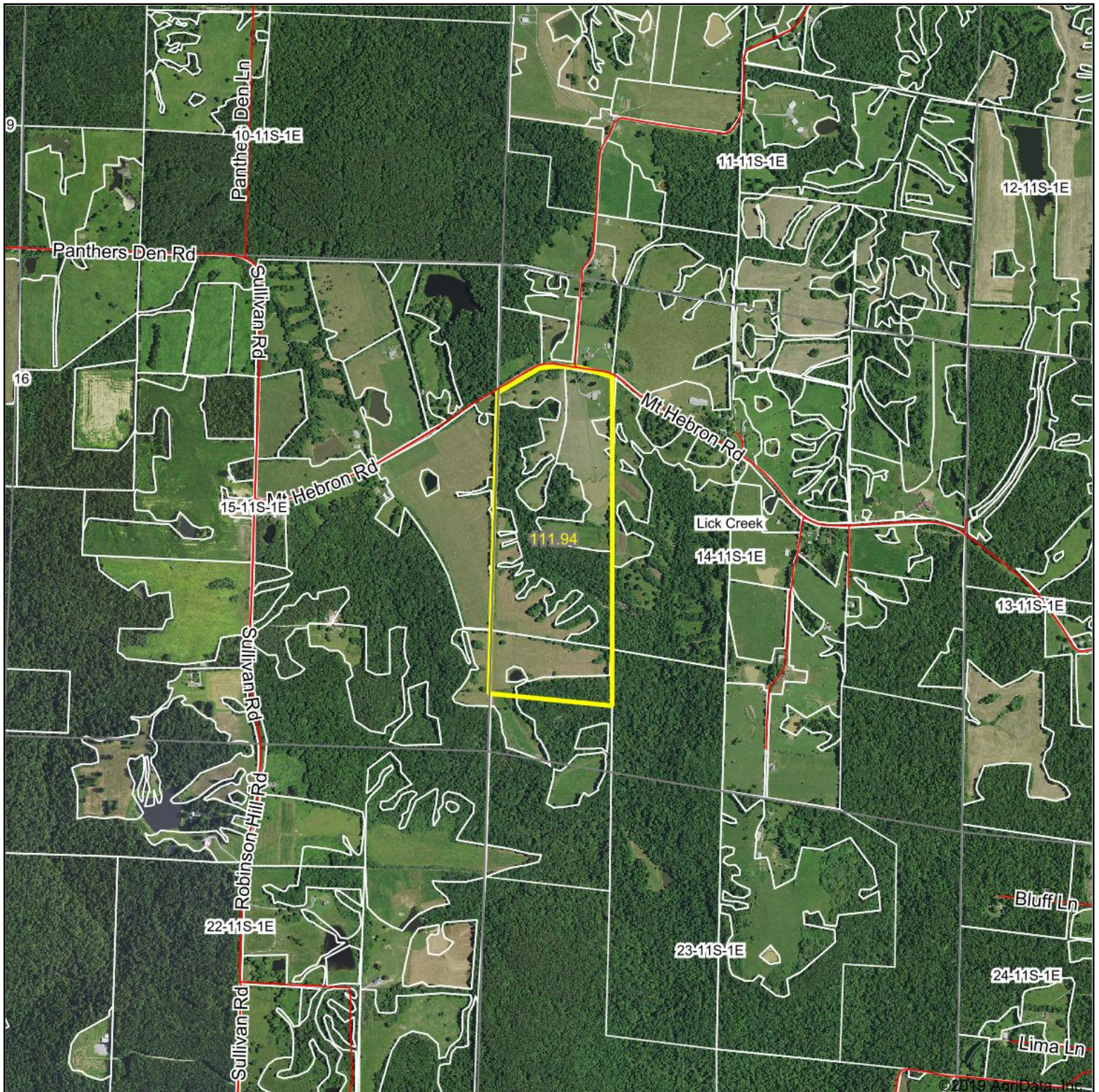


# Aerial Map



map center: 37° 33' 45.71, -89° 4' 37.62

0ft 1745ft 3491ft



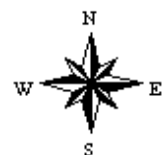
Maps Provided By:



© AgriData, Inc. 2019

www.AgriDataInc.com

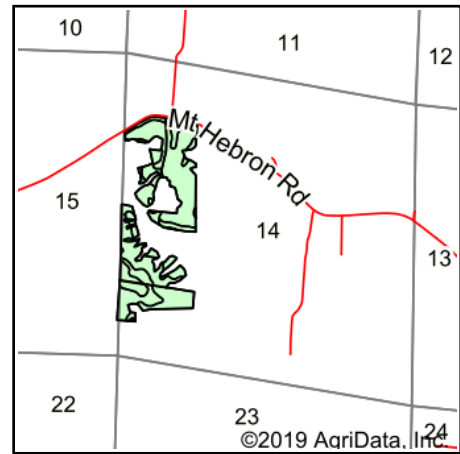
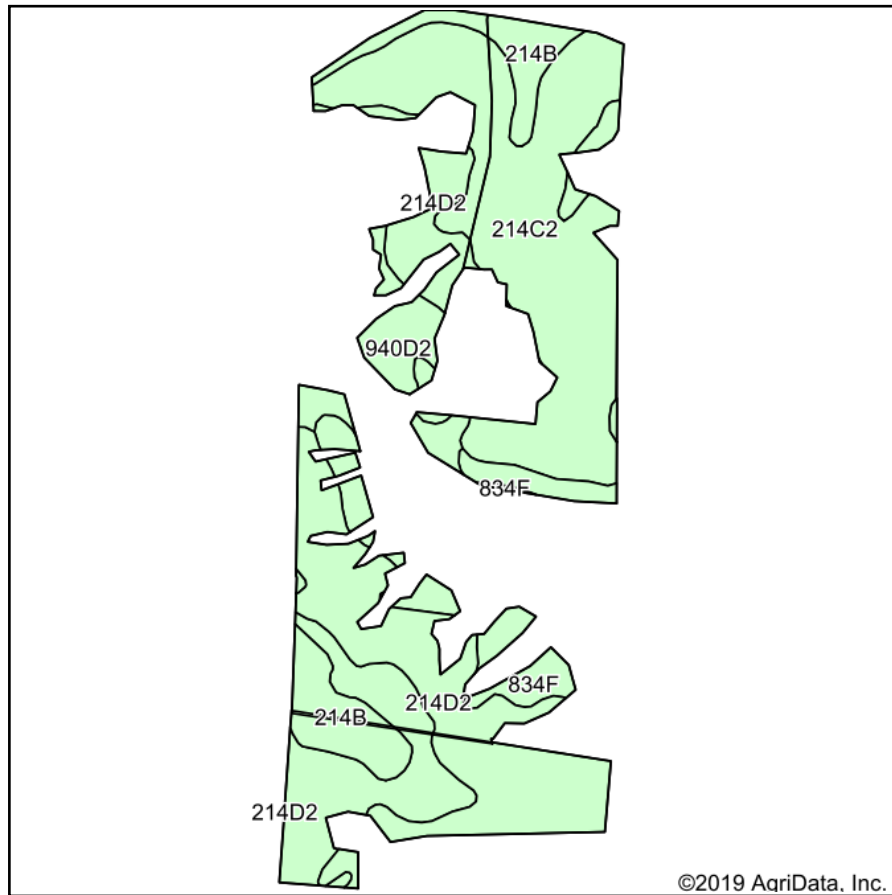
**14-11S-1E**  
**Union County**  
**Illinois**



2/27/2019



# Soils Map



State: **Illinois**  
 County: **Union**  
 Location: **14-11S-1E**  
 Township: **Lick Creek**  
 Acres: **65.83**  
 Date: **3/8/2019**



Maps Provided By:  
  
 CUSTOMIZED ONLINE MAPPING  
 © AgriData, Inc. 2019 www.AgriDataInc.com



## Area Symbol: IL181, Soil Area Version: 12

Code	Soil Description	Acres	Percent of field	Il. State Productivity Index Legend	Corn Bu/A	Soybeans Bu/A	Wheat Bu/A	Grass-legume hay, T/A	Crop productivity index for optimum management
**214C2	Hosmer silt loam, 5 to 10 percent slopes, eroded	31.69	48.1%		**126	**41	**52	0.00	**95
**214D2	Hosmer silt loam, 10 to 18 percent slopes, eroded	19.97	30.3%		**118	**39	**49	0.00	**88
**214B	Hosmer silt loam, 2 to 5 percent slopes	6.46	9.8%		**139	**46	**57	0.00	**104
**834F	Wellston-Westmore silt loams, 18 to 35 percent slopes	3.90	5.9%		**85	**28	**34	**2.31	**64
**940D2	Zanesville-Westmore silt loams, 10 to 18 percent slopes, eroded	3.81	5.8%		**108	**36	**45	**2.97	**81
Weighted Average					121.4	39.8	50.1	0.31	91.1

**Table: Optimum Crop Productivity Ratings for Illinois Soil by K.R. Olson and J.M. Lang, Office of Research, ACES, University of Illinois at Champaign-Urbana.** Version: 1/2/2012 Amended Table S2 B811

Crop yields and productivity indices for optimum management (B811) are maintained at the following NRES web site: <http://soilproductivity.nres.illinois.edu/>

\*\* Indexes adjusted for slope and erosion according to Bulletin 811 Table S3

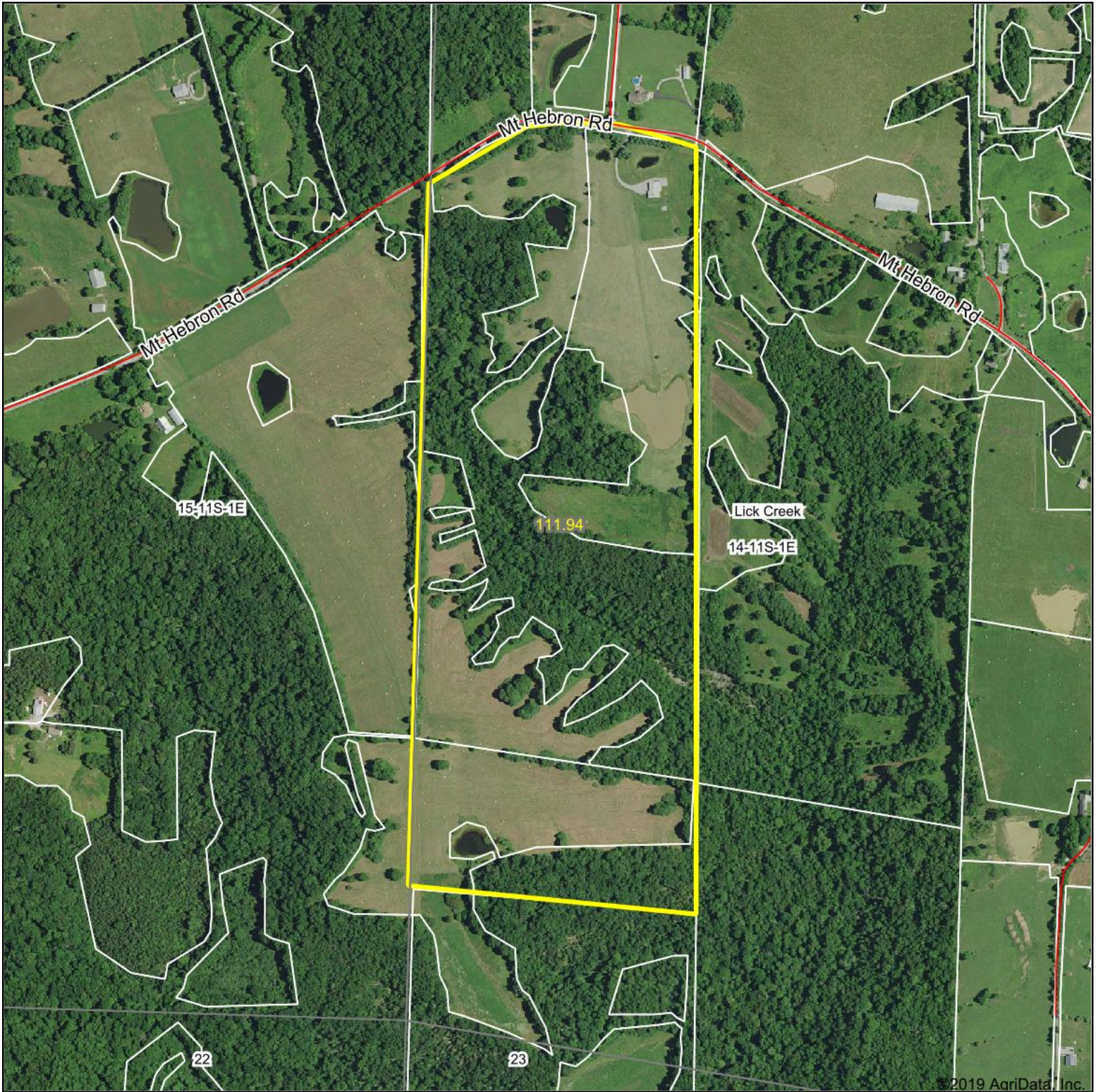
e Soils in the well drained group were not rated for grass-legume and are shown with a zero "0".

Soils data provided by USDA and NRCS. Soils data provided by University of Illinois at Champaign-Urbana.

\*c: Using Capabilities Class Dominant Condition Aggregation Method



# Aerial Map



©2019 AgriData, Inc.

map center: 37° 33' 45.72, -89° 4' 37.63

0ft 748ft 1496ft



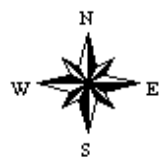
Maps Provided By:



© AgriData, Inc. 2019

www.AgriDataInc.com

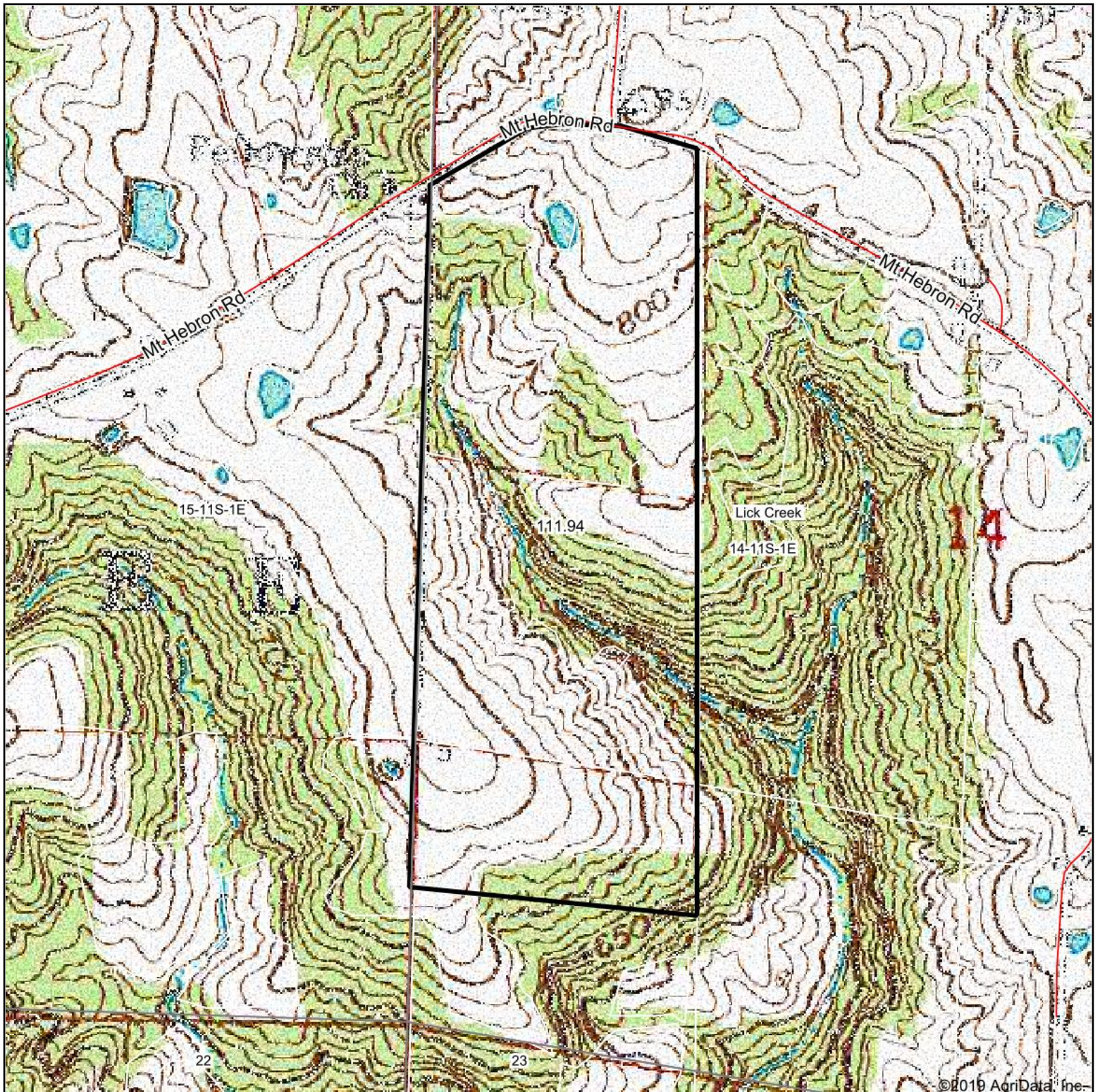
**14-11S-1E**  
**Union County**  
**Illinois**



2/27/2019



# Topography Map



map center: 37° 33' 45.72, -89° 4' 37.63

0ft 748ft 1496ft



Maps Provided By:



© AgriData, Inc. 2019

www.AgriDataInc.com

**14-11S-1E**  
**Union County**  
**Illinois**



2/27/2019